

COSTA BLANCA MOUNTAIN WALKS

VAL DE LAGUART. (2000 steps) LOWER BARANCO DE L' INFERN G54
2014 WARNING PATH BETWEEN D AND F (SEE MAP) IS BADLY ERRODED. GREAT CARE IS NECESSARY.

CIRCUIT. BENIMAURELL- FLEIX- BARRANCO DE L' INFERN- BENIMAURELL.

DESCRIPTION PREPARED BY : Michael T. Davies davies.mt@googlemail.com **VERIFIED** Nov. 2014

LEGAL NOTICE: Although we strive to make descriptions as correct as possible, use at your own risk.

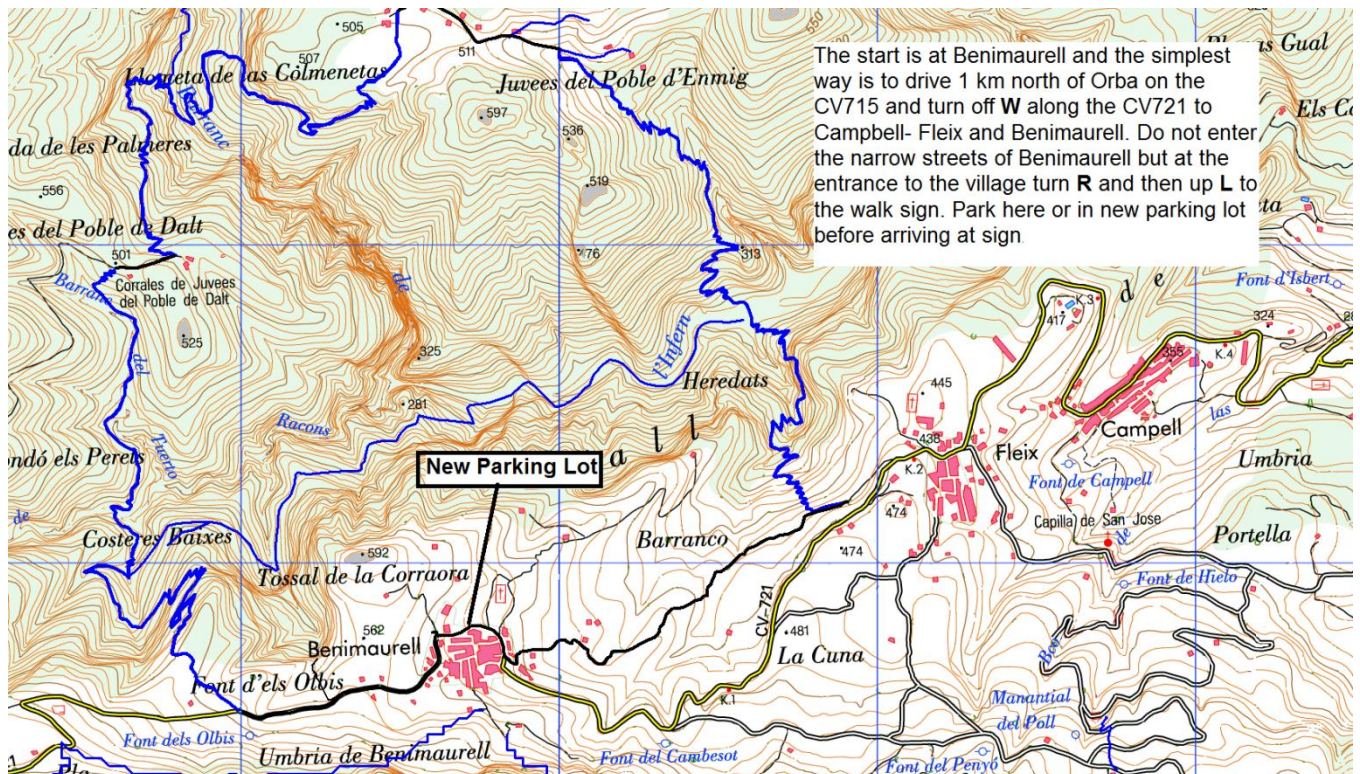
WALK STATS: DISTANCE 10.8km.- **WALKING TIME** 3 1/2 hrs - **ASCENT** 489mtrs – **GRADE** MS
(Walking time only add time for breaks and lunch)

DESCRIPTION OF WALK

Into a local “Grand” canyon, not quite as large, long or deep, but grand enough and similar in that you start off high and walk down low, meanwhile trying not to forget the extent of the climb back up. Starting from the remote mountain village of Benimaurell, along a charming, winding country lane to near Fleix and then down a beautifully engineered old “mozarabic” mule path, once one of the country’s main roads, to the usually dry bed of the Riu Ebo.

Becoming wilder and less frequented as you walk “upstream” along a path and streambed into the ever-narrowing spectacular gorge of L'Infern, finally blocked to walkers by a series of high, narrow usually dry waterfalls and pools. Then back a bit and a steep climb out of the gorge up a poor path to join another mule path, which takes you in easy zig, zags up 200 meters to the top of seemingly impassable cliffs. From now on easy walking to Font d'els Olbis and down the surfaced road to Benimaurell and the Oasis Bar or the nearby new “walkers” hotel.

TO THE START.



COSTA BLANCA MOUNTAIN WALKS

VAL DE LAGUART. (2000 steps) LOWER BARANCO DE L' INFERN G54
2014 WARNING PATH BETWEEN D AND F (SEE MAP) IS BADLY ERRODED. GREAT CARE IS NECESSARY.

CIRCUIT. BENIMAURELL- FLEIX- BARRANCO DE L' INFERN- BENIMAURELL.
DESCRIPTION PREPARED BY : Michael T. Davies davies.mt@googlemail.com **VERIFIED** Nov. 2014
LEGAL NOTICE: Although we strive to make descriptions as correct as possible, use at your own risk.

WALK STATS: DISTANCE 10.8km.- **WALKING TIME** 31/2 hrs - **ASCENT** 489mtrs – **GRADE** MS
(Walking time only add time for breaks and lunch)

THE START.

Note that times quoted are walking time only. - no breaks.

Underlined letters are map references.

**Total distance and
%of walk completed
based on total time**

From car park walk down (East) the surfaced road and take the third **L** down a steep concrete road, which bears **L** and then **R** to pass a Font & Lavadero **A** on your **RHS**. Continue along this rather charming and unfrequented winding country lane to a lavadero **B** on your **LHS** just before Fleix. **(20min 1.6km)**

1.6km 10%

Now turn round and go back a few meters to find the path on your **RHS** going down. (*PRCV 147 to Juvees D'Enmig*). This soon turns into the magnificent, beautifully engineered, ancient mozarabic mule path which zigzags down to the usually dry river bed **C**. **(32min 1.8km)**

3.4km 26%

While the streambed is usually passable it is rough and there are paths alongside, which alternate from side to side of it. Turn **L** and start off on the **LHS** path, (southern side), and switch sides, marked by cairns, about 5 times (or alternatively, stay in riverbed all the way) until at the last crossing from **RHS** to **LHS** find two cairns **D** which mark the start of the path up to Benimaurell. **WSW (23min 1.3km)**

4.7km 37%

However the most spectacular part of the walk is ahead so continue up the increasingly rough streambed bearing **R** into the narrowing jaws of the gorge until your way is blocked by pools and usually dry waterfalls **E**. (*Shady but a good place for lunch.*) **N (22min 0.8km)**

5.5km 48%

Return to the Cairns **D**. **(22min 0.8km)**

6.3km 59%

Take the steep, rather poor, path up on the **S** side of the gorge. **Beware this path is steep and has suffered from erosion and is very narrow in places. Take care.** This rather precarious path continues below great cliffs on your **LHS** and the Barranco Racons below on your **R**. Ignore any faint paths off and carry on to where path merges with an old mule path as it curves around the **V** of a barranco **E**. **(40min 1.8km)**

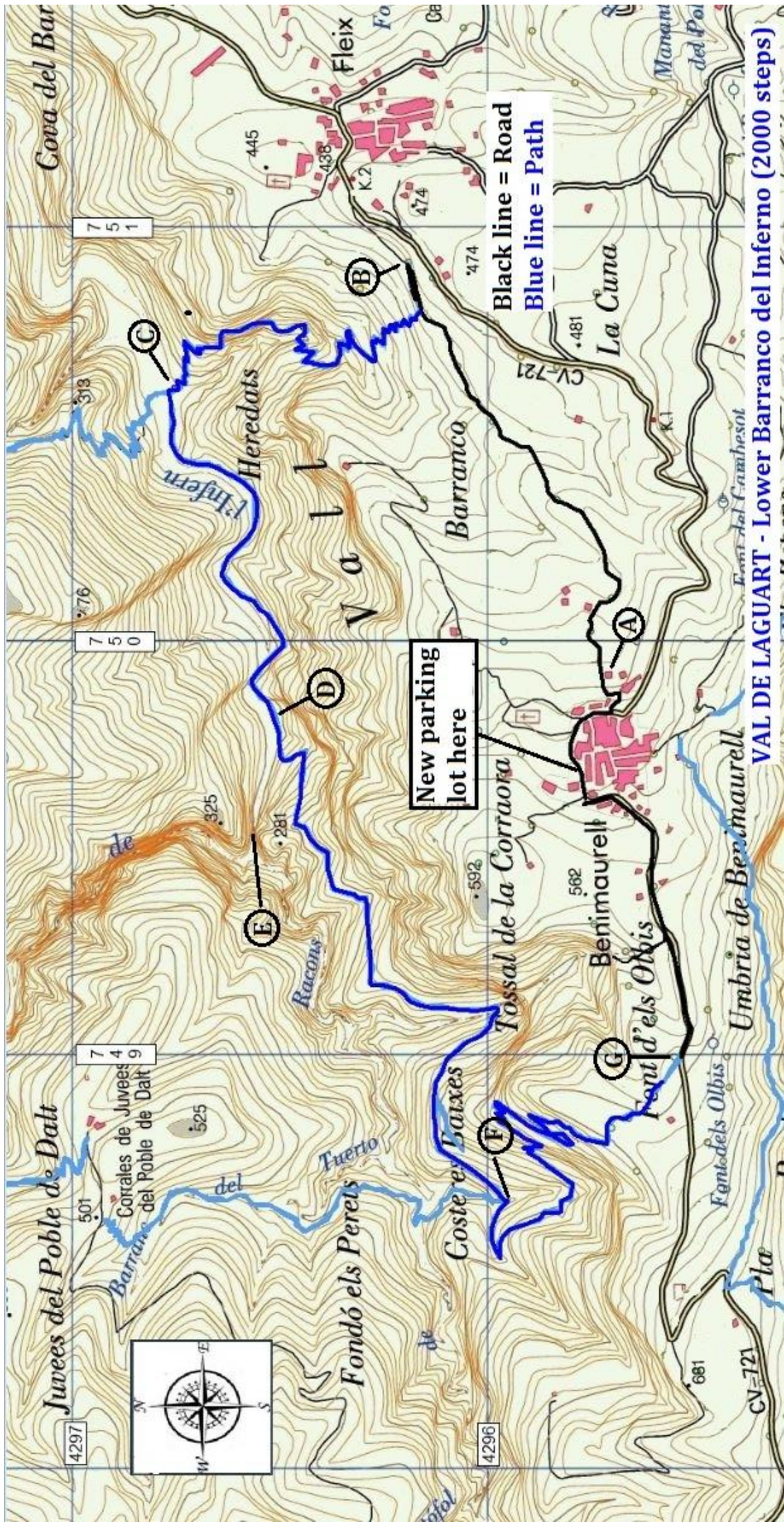
8.1km 78%

Turn **L** up the mule path (signposted Benimaurell) and follow the zigzags up fairly easily to the heights above. **(NNE)** The path now levels and reaches the surfaced road **G**. **(30min 1.8km)**

9.9km 93%

Now turn **L** down the road and as you reach Benimaurell take the **LH** fork and then **L** again and bear **R** to the car. **E (13min 0.9km)**

10.8km 100%



VAL DE LAGUART - Lower Barranco del Inferno (2000 steps)