

COSTA BLANCA MOUNTAINWALKERS - WALK DESCRIPTION

Visit www.walksinSpain.org for more walks descriptions in Spain

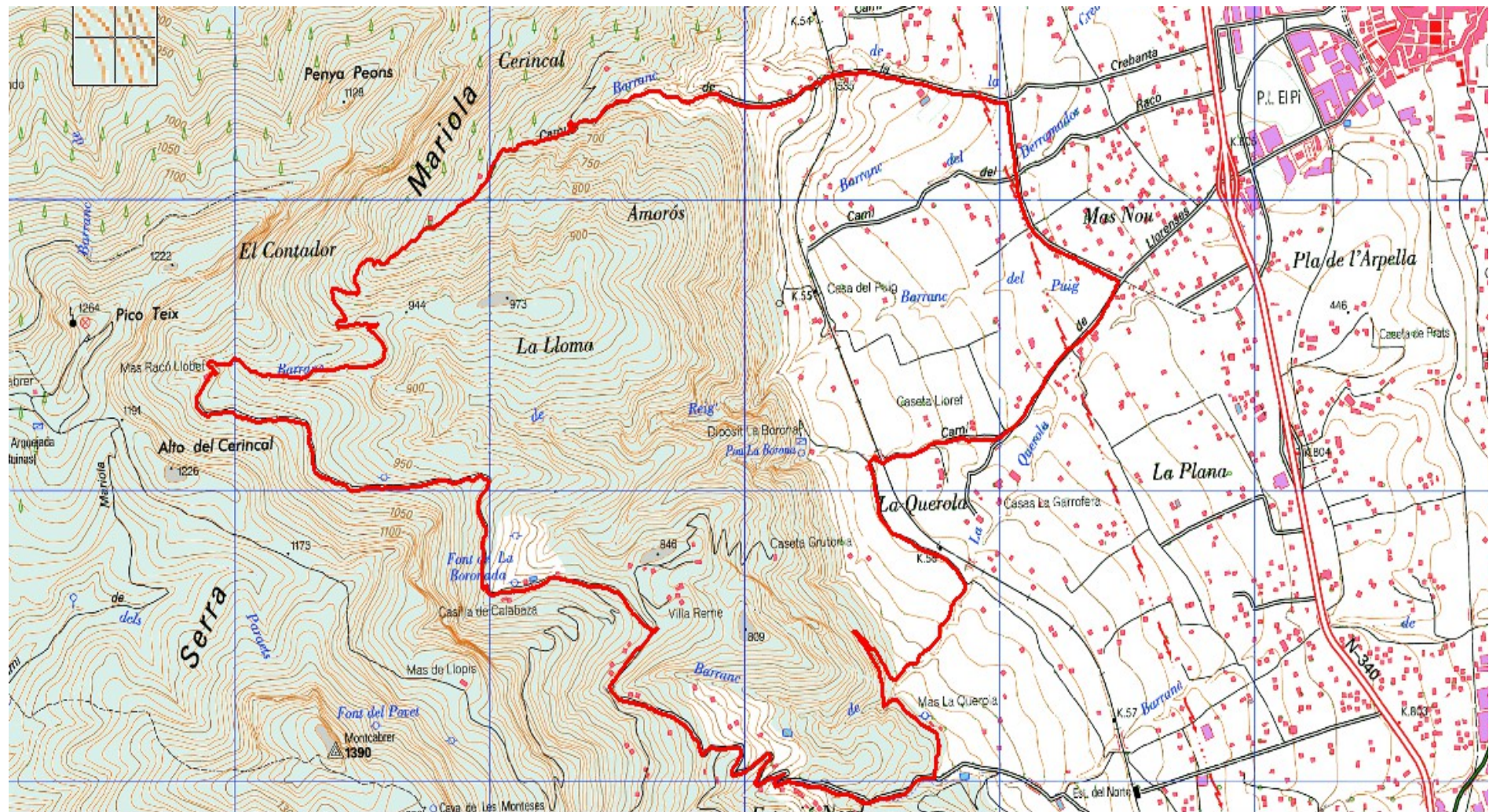
Walk description originally prepared by:-	Ralph Phipps
Last Updated	20 th March 2013
Title of Walk	Font del Raco de Llobet short circular
Location of Start (include name of nearest village/town at start of description)	Muro de Alcoy, at junction of Calle de Les Llorenses and unnamed track.
Key Statistics for walk - Distance in km	13.7
Key Statistics for walk - Ascent in m	660
Key Statistics for walk - Walking time and total completion time including any stops	3.5hrs 5hrs
Key Statistics for walk - Grade (using CBMW system)	S/B
Grid reference of start point (if known)	Lat:- 38.712907, Long:- -0.48357
Directions to Start	Travel north from Cocentaina on N340. Pass km 804 (at a set of traffic lights) and then take the next L (also at traffic lights). To do this you have to filter off to the R and go around a roundabout affair. Once around take Calle Les Llorenses (to the L of a yellow wall). Follow this up about 1km to a gravel turn on the RHS with bins. Park here. If you pass Belda Decoracion (at the turning with the traffic lights) you have gone too far on the N340!!
Short walk description	A fine high level visit to the flanks of the Sierra Mariola.
Full Walk Description	Elapsed Walking Time/Distance so far
From your parking area walk away to the NW from the cars along the rough track, go around a small bend and straight across a cross roads to eventually reach a stop sign at Carrer del Sant Salvador. Turn L up a road with white line down the middle.	830m, 10.5mins
Past the tennis club the road diminishes and crosses the railway line.	1.5km, 21mins
Continue ahead on the tarmac to pass a picnic table in the RHS.	
When the tarmac eventually gives out turn L, go around a zig-zag bend and continue.	2.7km, 40mins
At a fork with a No Entry sign high up on the LH branch take the R fork and when it reaches the entrance to a small farm on the RHS continue ahead on a footpath up the	3.4km, 53mins

COSTA BLANCA MOUNTAINWALKERS - WALK DESCRIPTION

barranco.	
After a few metres you pass the back entrance to the farm, cross to the other side of the barranco and continue ahead on the footpath.	
Just after a bend in the footpath re-join the track and turn R uphill.	
Continue ahead to reach a junction to the L	4.2km, 1hr 11 mins
which runs out level to a small plateau with cultivated terraces to a ridge line beyond. Take this track, pass a ruin on the LHS and just before reaching the terraces watch out for a footpath continuing uphill to the R. (Y/W)	
The path turns back on itself and runs up parallel to a barranco on the LHS, descends a little before rising to eventually meet the barranco bottom. In the distance you soon see the Mas de Racó de Llobet above you.	
Soon the path reaches the terraces, continues on a back to the RHS, curves around to the L before rising up to quickly meet a track at a water deposit which we ascend for a few metres to the corner of the fenced enclosure where we turn L to continue on the footpath.	5.3km, 1hr 32mins
This quickly reaches the old building – the Mass de Racó de Llobet - with seats outside. This is used by a local group of hunters, but you are welcome to borrow the seating as this represents the high point of the walk unless you take the optional extra!	5.5km, 1hr 35mins
Continue on the track ahead and pass a small building with a water pipe with running water.	
Ignore all side tracks going off which are entrances to houses/fincas.	
Walk through a closed gate with a No Entry sign behind you as you pass through it, go round a spur and continue on the main track downwards.	6.9km, 1hr 53mins
Just past the Font de la Barrona the track leads into a surfaced road, passes a gated track on the RHS and then leads on to a junction where you take the L downward sloping road.	7.7km, 2hr 4mins
After many zig-zags you reach an area with a barranco on your RHS and the ridge line on your L just beginning to reach its end with terraces in front of you on the LHS and just on a corner a concrete chamber on the LHS with a small cairn marking the beginning of a path going L.	10.3km, 2hr 39mins
At a fork after 50m take the RH line slightly descending. (large red house visible below)	
This leads round to a large and collapsing ruined building and you pass this on the LHS ignoring other paths leading to the R.	
Walk round the head of a barranco with some imposing crags on either side and on the far side cross to the right across rock slabs to find the continuation of the path which you follow ahead rising again.	10.8km, 2hr 46mins
This reaches a junction with a Y/W path and you turn R downhill here and return almost to reach the prior barranco before turning down to the L between terraces and the edge of the barranco.	
Finally this reaches a track with a fingerpost where you turn L.	11.8km, 3hr 2mins

<u>COSTA BLANCA MOUNTAINWALKERS - WALK DESCRIPTION</u>	
Go slightly uphill for a few metres and then at a fork go R and level. Just at a red and white casita turn R at a junction and pass under the railway. Continue directly down this road to reach your car.	12.4km, 3hr 10mins
Walk Recommendations or restrictions	None

Route followed is outlined in red



Track Point : 900

Waypoints Used : 0 of 10000 (GPS:1000) Events Used : 0 of 500