

## **COSTA BLANCA MOUNTAINWALKERS - WALK DESCRIPTION**

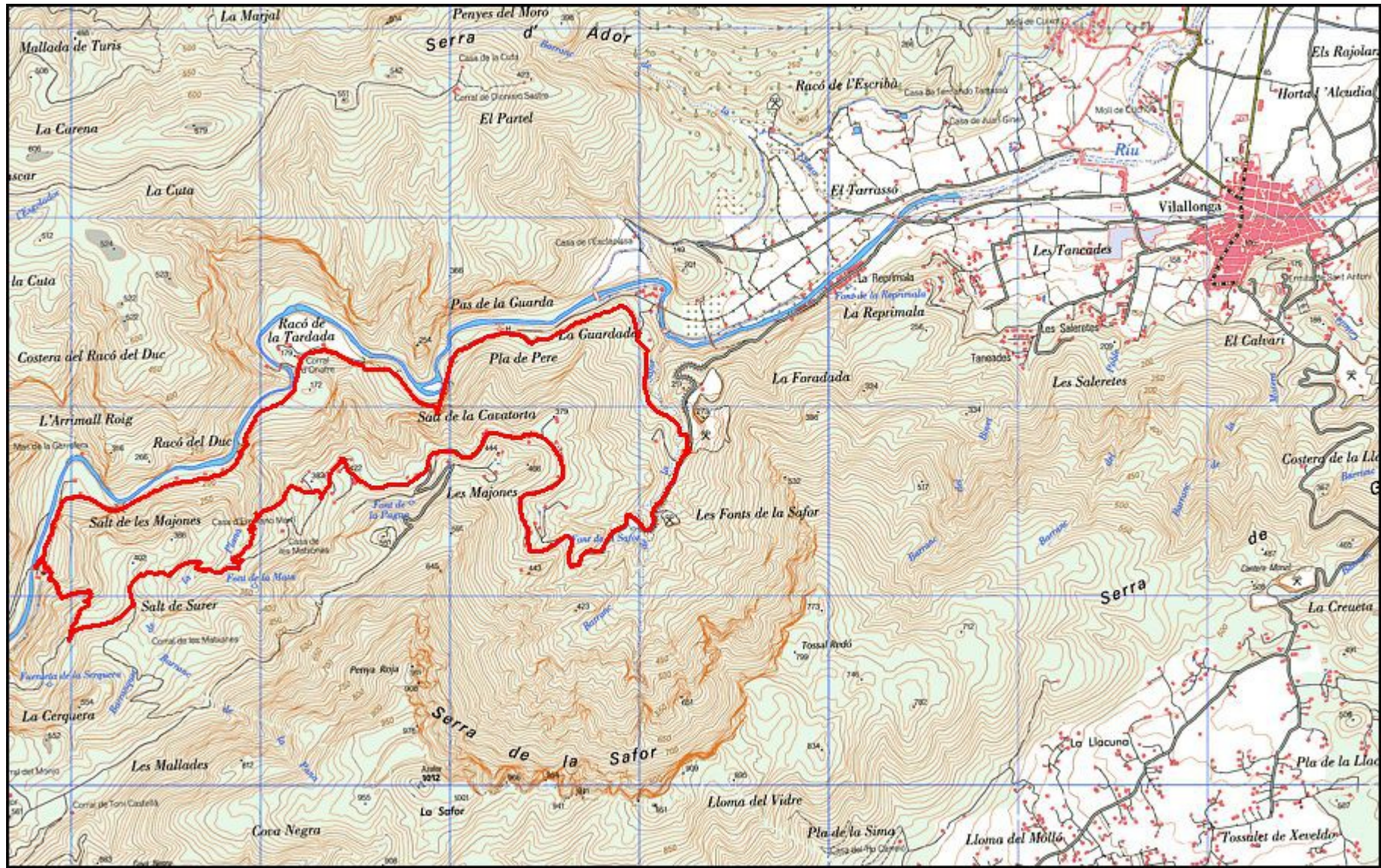
Visit [www.walksinSpain.org](http://www.walksinSpain.org) for more walks descriptions in Spain

<b>Walk description originally prepared by:-</b>	John Male and Jo Fletcher	
<b>Last Updated</b>	3 Dec 14	
<b>Title of Walk</b>	Rio Serpis Circuit from Vilallonga	
<b>Location of Start (include name of nearest village/town at start of description)</b>	Vilallonga Quarry Park at the walking map sign	
<b>Key Statistics for walk - Distance in km</b>	13km	
<b>Key Statistics for walk - Ascent in m</b>	500m	
<b>Key Statistics for walk - Walking time and total completion time including any stops</b>	3.25hrs 4.5hrs	
<b>Key Statistics for walk - Grade (using CBMW system)</b>	MS/B	
<b>Grid reference of start point (if known)</b>	Lat:- 38.875520, Long -0.208738	
<b>Directions to Start</b>	Vilallonga. 38.888528 -0.216508. Arriving in Vilallonga using CV680, turn R at roundabout after filling station following direction towards Ador. N.B. Don't turn to Ador before you get into the town or you have reached the filling station. At the second roundabout with a dog on the plinth – go straight ahead leaving the school on your left to Reprimala (along Via Pista). Pass the font & bar & continue up & round the bends to quarry. Park near information board 100 metres further on.	
<b>Short walk description</b>	Circular route with a half an hour of road climbing to warm us up before following undulating paths with spectacular views to the old Hydro power station & lunch by the river. Return via the old railway line. Bring a torch if you do not like the dark. Sticks useful for some of the descents. Flowers in profusion in spring-time.	
<b>Full Walk Description</b>		<b>Elapsed Walking Time/Distance so far</b>
Depart the parking area by the walking map board and head up the hill on the road. Continue for 2.1 Km to a sign post pointing to L'Orxa and the junction of the PRV 42. Turn R at the post onto a minor road.		3Km/45mins
Continue along the road until you reach a group of several buildings. There is a log cabin on the R and a couple of other weekend retreats.		3.5km/50mins
Follow the road which now heads down the hill to a set of green metal gates.		3.8km/57mins
Follow the road round to the R and down the hill. Continue down the hill to the large post with two rings on the top. Take the path on the left heading downhill towards the finca.		4km/1hr
Head towards the finca and the waterfall below the buildings (probably dry unless there has been recent rain) with the valley on your right. Half way along the path keep L at the path junction. Do not take the path to the R which heads down the hill to the stream.		4.2km/1hr 10mins

## **COSTA BLANCA MOUNTAINWALKERS - WALK DESCRIPTION**

<p>Continue to contour around towards the buildings and scramble up to the flat area. This is probably a good spot to take a break and admire the views.</p>	<p>4.4km/1hr 20min 10 min stop</p>
<p>Follow the concrete road up the hill from the finca. After about 300m watch out for the path on the RHS which cuts back from the concrete road up a ramp and contours away to the right. Turn R.</p>	<p>4.7km, 1hr 45min</p>
<p>Follow the path which contours and crosses a couple of barrancos before steadily climbing up to an old casita with two prominent firs. The path can be overgrown in places. On reaching the casita the path continues up the hill for a further 10-15 mins until you reach another track.</p>	<p>5.7km, 2hr 5min</p>
<p>On meeting the track turn R and head down the hill until you reach a sign post and turn R down the path signed Riu Serpis de la Llum.</p>	<p>6.1km/2hr 10min</p>
<p>The path zig zags down the hill. Take care as the path can be difficult and slippery if wet. Continue towards the river and the buildings which come into view as you get to the bottom. On reaching the bottom you meet a track by the old Hydro Electric building and the chapel. The route turns R however if you turn L and continue down to the river, the river is a good place for a lunch stop.</p>	<p>7km/2hr 50min</p>
<p>From the river, head NE down the valley following the track in the direction of Vilallonga. This track meets the old railway route at the remains of the old bridge across the river.</p>	<p>25mins</p>
<p>Continue along the old railway route for about 2km through several tunnels and cuttings. You will pass a finger post on the RHS – PRV42 La Safor – stay on the railway route. On leaving the long tunnel bear right onto the upper track.</p>	<p>7.4km/3hr 15mins</p>
<p>The track undulates up and round the spur and becomes a concrete road. The start point quarry comes into view as you get round the corner. Continue following the track towards the quarry until it meets the road and the finish.</p>	<p>10.3km/3hr 53min</p>
<p><b>Walk Recommendations or restrictions</b></p>	<p>12.2km/4hr 20min</p> <p>Bring a torch for the tunnels and be careful on the descent to the old Hydro station as it can be a little slippery after rain. Walking sticks may be a help.</p>

**Route shown in relation to town of Vilallonga – see next map for detail**



Route followed is outlined in Red

