

## **COSTA BLANCA MOUNTAIN WALKERS - WALK DESCRIPTION**

Visit [www.walksinSpain.org](http://www.walksinSpain.org) for more walks descriptions in Spain

<b>Walk description originally prepared by:-</b>	Ralph Phipps
<b>Last Updated</b>	18 <sup>th</sup> April 2015
<b>Title of Walk</b>	Teide from Sea to Summit - Playa de las Americas to Arona
<b>Location of Start (include name of nearest village/town at start of description)</b>	Magma arts centre on Avenida de los Pueblos (TF481) a little NW of Golf Las Americas.
<b>Key Statistics for walk - Distance in km</b>	13.5km
<b>Key Statistics for walk - Ascent in m</b>	1170
<b>Key Statistics for walk - Walking time and total completion time including any stops</b>	3.5hr 5.5hr
<b>Key Statistics for walk - Grade (using CBMW system)</b>	VS/A
<b>Grid reference of start point (if known)</b>	Lat:- 28.068712, Long: -16.727198
<b>Directions to Start</b>	If coming by bus arrive at Adeje bus station and walk back a little to the S to reach the roundabout on the TF481 with the large structure of the Magma arts centre.
<b>Short walk description</b>	A starter walk to get you going on your ascent of Teide or the GR131. Much tarmac but also some grand scenery and a mozarabic path.
<b>Full Walk Description</b>	<b>Elapsed Walking Time/Distance so far</b>
<p>Turn uphill at the roundabout beyond Magma and walk ahead as you swing around to the R and then L and then cross the motorway by a bridge.</p> <p>Cross a smaller roundabout with Siam Park on the LHS and continue steeply uphill. At the top of the hill reach the roundabout and swing R and then level briefly (60m) before swinging back to the L again uphill.</p> <p>Shortly reach a turning on the RHS at a 40kph sign and turn up this smaller tarmac road which leads to La Caldera – a small hamlet of houses.</p> <p>Walk through these and continue up the road passing the very fertile caldera plain on your LHS.</p> <p>Eventually the road reaches the gates of the sewage works and here you turn L before</p>	965m, 14min

## **COSTA BLANCA MOUNTAIN WALKERS - WALK DESCRIPTION**

the gates continuing on tarmac. When this runs out at the electricity sub-station continue ahead for a few metres on a gravel track to a large open area where a footpath with a small hand written stone sign points you up the hill.	3km, 42min
Continue easily to reach a solid lava section which you walk up to find the continuation of the footpath now in zig-zags uphill.	3.7km, 54min
Reach and cross a concrete water channel	4.3km, 1hr 7min
and follow the footpath up by a water pipe and then in zig-zags to reach a spur where you bend around to the L to join a broad track.	4.7km, 1hr 15min
Now aim for a large finca with a white wall on its LHS which you can see in the distance.  Before reaching the finca keep R and lower at a junction where there is a big pit behind and to your L.  Soon reach the Finca la Vallito and pass to its L to continue on the descending track.  You drop down to cross a barranco, rise up on the other side and swing L (E).  Continue ahead to once more drop into and cross a barranco exiting to the R (S).  A little way up here and just before reaching the main road turn L up a short footpath to join the remains of the old tarmac road where you turn L.	
In a few metres you have no alternative but to join the main road and turn L uphill.  160m later turn L steeply up Camino Real de Vento.  Shortly at a fork continue ahead uphill.	6.3km, 1hr 39min
Reach the outskirts of the village where a road joins you from the L as you swing R.	7.4km, 1hr 57min
Very quickly there is a finger post pointing L along a short section of tarmac indicated to Ifonche and the GR131. Take this and as it ends drop down to the RHS on a footpath to soon cross a barranco and rise up again to a footpath junction.	7.8km, 2hr 3min
Here turn R and follow this as it meanders out to the L to reach the edge of a barranco.  The path continues along the edge for a while before dropping down again to cross this large barranco.	8.3km, 2hr 10min
Rise on zig-zags to reach a cliff edge directly in front of you with panoramic views ahead and here turn R still uphill.	9.3km, 2hr 30min
Work up towards Roque Imoque – the large pointed peak ahead of you – and then turn slightly to aim up the flank to the L of the Roque, always on a clearly defined path.  When you reach a level section there are some cave houses on the RHS (worth exploring) and then directly ahead of you at a small col a steep ridge line. Continue up this slightly to the L and the rough path soon becomes clearer as you start to work out to the L of the ridge line.	10.2km, 2hr 45min
Soon you can see you objective – a col with a few trees on it to the L – and the path rises on a well graded line to eventually reach this point.	11.4km, 3hr 9min

## **COSTA BLANCA MOUNTAIN WALKERS - WALK DESCRIPTION**

At the col there is a stone threshing circle and explanatory notice board.  
Continue ahead past this rising a few metres before working R towards a house which you pass on the LHS to quickly meet a road.

Here turn L on the tarmac and continue to rise for a while before levelling out and finding your way across to a large bar/restaurant – El Dornajo. This is normally packed at the week-ends.

The route ends here and unless you have arranged transport you will have to turn R and walk several kilometres further to reach the main road and the bus services that will take you back to Playa de las Americas.

The next section of the GR131 leaves this point to continue ahead.

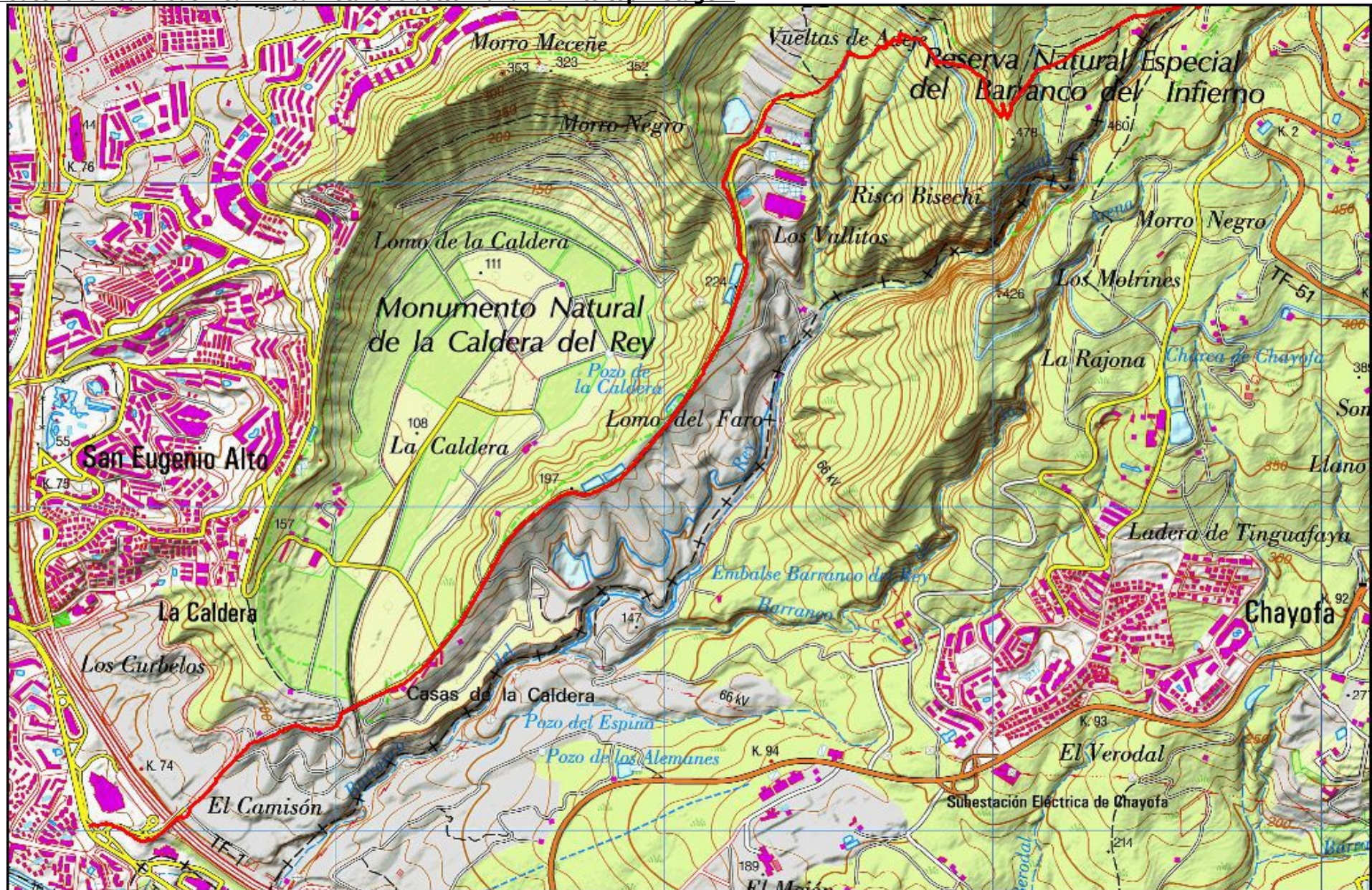
11.7km, 3hr  
13min

### **Walk Recommendations or restrictions**

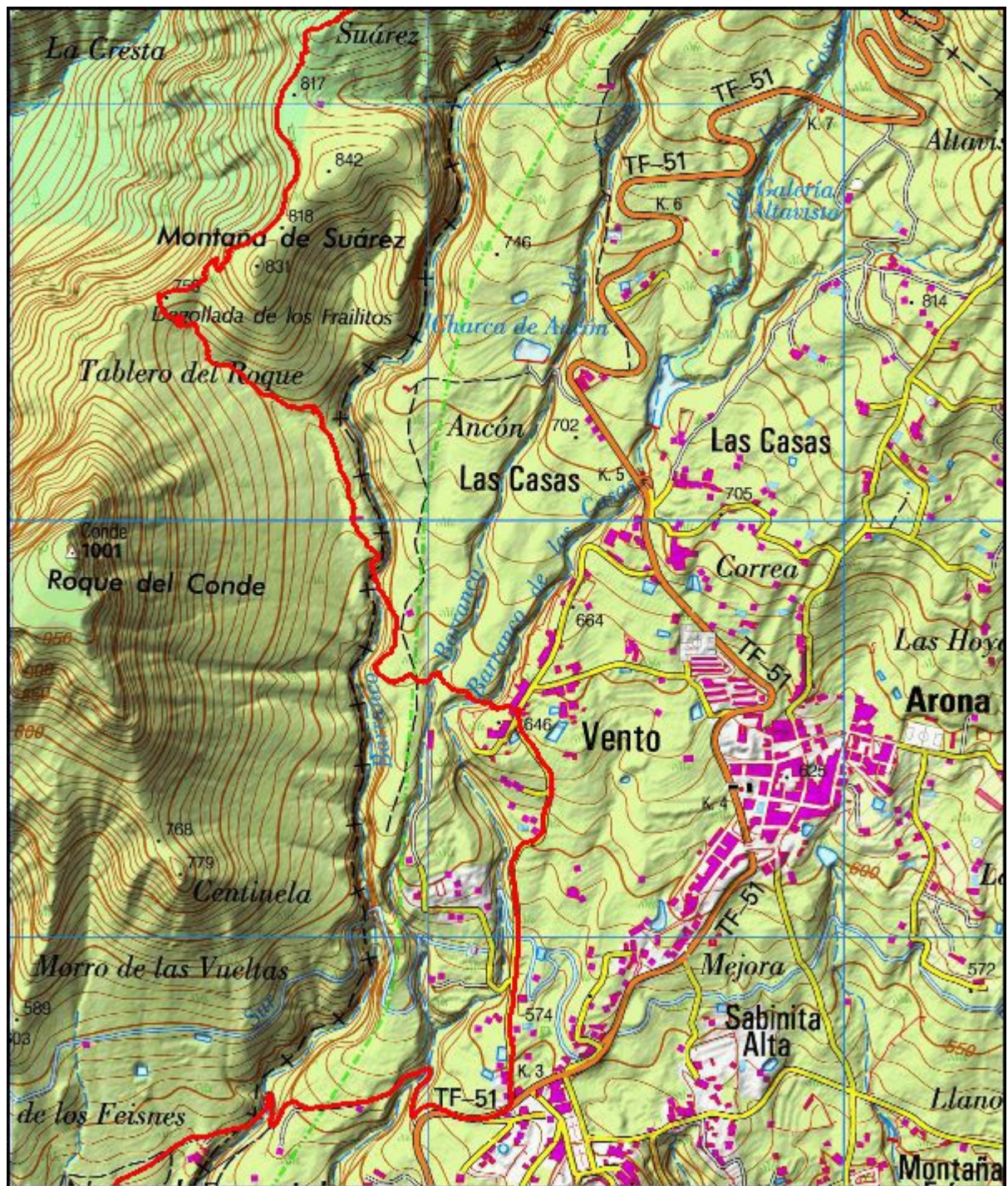
Need transport at the end of the walk.

See map below.....

Route followed is outlined in Red – start at bottom and work to top – Stage 1



**Route followed is outlined in Red – start at bottom and work to top – Stage 2**



**Route followed is outlined in Red – start at bottom and work to top – Stage 3**

