

COSTA BLANCA MOUNTAIN WALKERS - WALK DESCRIPTION

Visit www.walksinSpain.org for more walks descriptions in Spain

Walk description originally prepared by:-	Jean & Bob Hall hallbobandjean@aol.com	
Last Updated	1 st March 2019	
Title of Walk	Confrides Castle Circuit from Partagas - shorter	
Location of Start (include name of nearest village/town at start of description)	Benifato Fuente de Partagas reached from Benifato and signed from the village.	
Key Statistics for walk - Distance in km	9	
Key Statistics for walk - Ascent in m	300	
Key Statistics for walk - Walking time and total completion time including any stops	3hr 3.75hr	
Key Statistics for walk - Grade (using CBMW system)	M/A	
Grid reference of start point (if known)	Lat: 38.657914, Long: -0.241836	
Directions to Start	The CV70 meanders up to the picturesque town of Guadalest from near Benidorm and then continues towards the small village of Benifato. As you pass the Restaurant Venta de Benifato continue for 300m towards Confrides and take a sharp L road up towards Benifato village. Take the 2 nd R tarmac road (signed) to Fuente Partagas. Drive 1.75km to a Y jnc and for the car shuffle go R for 0.5km to a bridge and park. Other cars should go L at the Y jnc and continue 1.5km to its end at Partagas. Park here. Ample parking.	
Short walk description	An excellent walk on the northern slopes of Aitana with superb views on a clear day and a surprising view of the Castle. High altitude so choose weather. Occasional snow. Tracks and paths not muddy. 50% on mostly obvious paths, 50% on forestry tracks. 10 minute each way optional scramble up to Castle, (not for sufferers from vertigo).	
Full Walk Description		Elapsed Walking Time/Distance so far
Your first objective is the Col some ½ km. to the W .		

Remember that you use these walk guides at your own risk. Take precautions and if unsure – turn back!

COSTA BLANCA MOUNTAIN WALKERS - WALK DESCRIPTION

The easy way is to continue up the track, which turns **L** then **R** to **Y** junction **A**. You take the **RH** track. Follow signs to Passet De La Rabosa. **(5min .2km) 0.2km 3%**

Continue up the track to a chain and find the path going up **R B**. **(7min .5km) 0.7km 7%**

Climb up and through a jumble of rocks (possibly caused by a fall during an earthquake) to reach a col (1178meters) where path divides **C**. **(10min .5km) 1.2km 13%**

You take the **RH** path and then IMMEDIATELY take the **LH** path going down and across the valley aiming for the next col with a group of pines. Here at a cairn you join a feint track **D** and turn up **L**. **(17min .8km) 2.0km 23%**

Follow this track (ignore track off **L**) as it curves around and down across the Barranco Barbaroja, with ruin on your **R** and on past ruin of Coral de Bernal on hillside on your **R**. Continue along track through a "field" and up through a pinewood to meet a cross track at a shallow col **E**. **(15min .9km) 2.9km 32%**

Turn **R** up track and watch for cairn marking beginning of path **F**. **(3min .2km) 3.1km 34%**

Take this path which skirts a valley on your **L**. Ignore first path off **L**. Continue to reach a large cairn where the path turns sharp **L G**. **(7min .4km) 3.5km 38%**

Follow the path heading in a westerly direction to arrive at a beautiful valley with a casita and almond trees. The path descends steeply down the **S** side of the valley before crossing over to the **N** side to eventually meet a track **H**. **(16min .9km) 4.4km 47%**

Turn **R** and pass through a notch with a superb view of Benifato Castle. At a sharp **LH** bend find a cairn marking a path going down **K**. **(7min .4km) 4.8km 51%**

Take this path going steep down for a few meters and then levelling out **R** and aiming for the Col on **RH** side of Castle. Continue on this path up to the Col with a large cairn **M**. **(15min .7km) 5.5km 60%**

The col offers some shelter from wind and sun and has superb views for a rest while the energetic make the very worthwhile scramble up the Castle by the "path" on the **NW** side. **(20min .5km) 6.0km 72%**

From the foot of the Castle cliff a short path goes down bancales to meet a track. Wind down track, with occasional red arrows, ignoring minor tracks off **L** and **R** to arrive at a green fence **N**. **(30min 1.9km) 7.9km 89%**

COSTA BLANCA MOUNTAIN WALKERS - WALK DESCRIPTION

Turn **R** and along the fence. At casa gates straight ahead turn **L** and continue down to meet a surfaced road at a bridge **P** and the "ferry" car(s) which whisk the drivers back to Partagas. **(10min .5km)** **8.4km 95%**

Walkers cross the bridge and follow the track up **R** to the main road **R** to meet the cars descending from the Fuente. **(8min .6km)** **9.0km 100%**

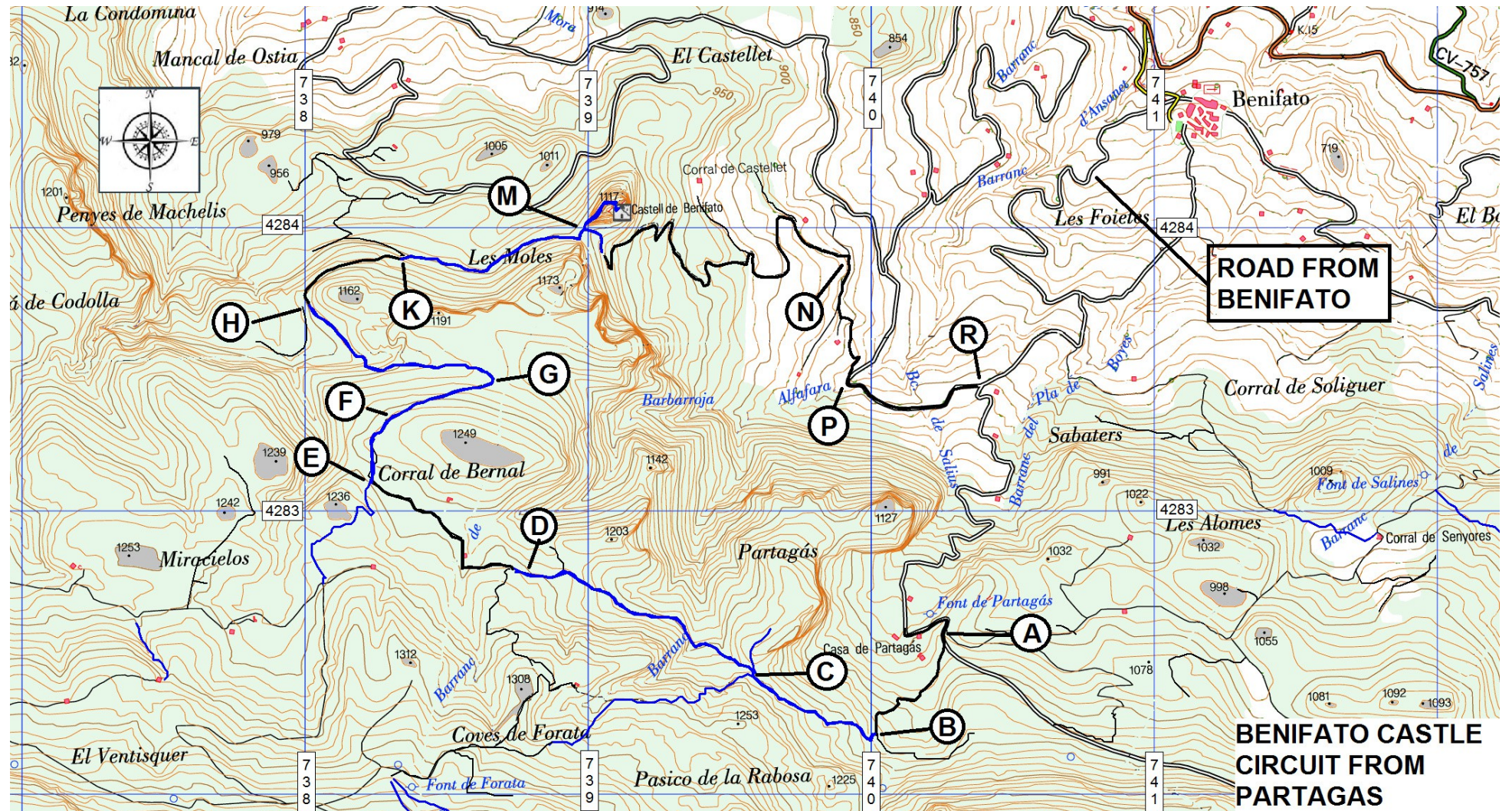
If there are no ferry cars turn **R** up the surfaced road and walk the 1.5km, climbing 220 meters to Partagas. There are a few paths (well marked) to avoid some surfaced road.

Spanish maps included within these descriptions are provided courtesy of the Spanish IGN and remain © Instituto Geográfico Nacional

Walk Recommendations or restrictions

Car shuffle needed, although you can obviously walk the whole route!

Route followed is outlined on map.....



Remember that you use these walk guides at your own risk. Take precautions and if unsure – turn back!