

COSTA BLANCA MOUNTAIN WALKS

BERNIA - SOUTH WEST.

S16

CAMINO JALON –ROCK GATES – SEVERINO- RUINS OF FORT - PICNIC AREA.

WALK STATS: DISTANCE 11.0km – WALKING TIME 3 ½ hrs.- ASCENT 650mtrs – GRADE S

(Walking time only – add time for breaks and lunch)

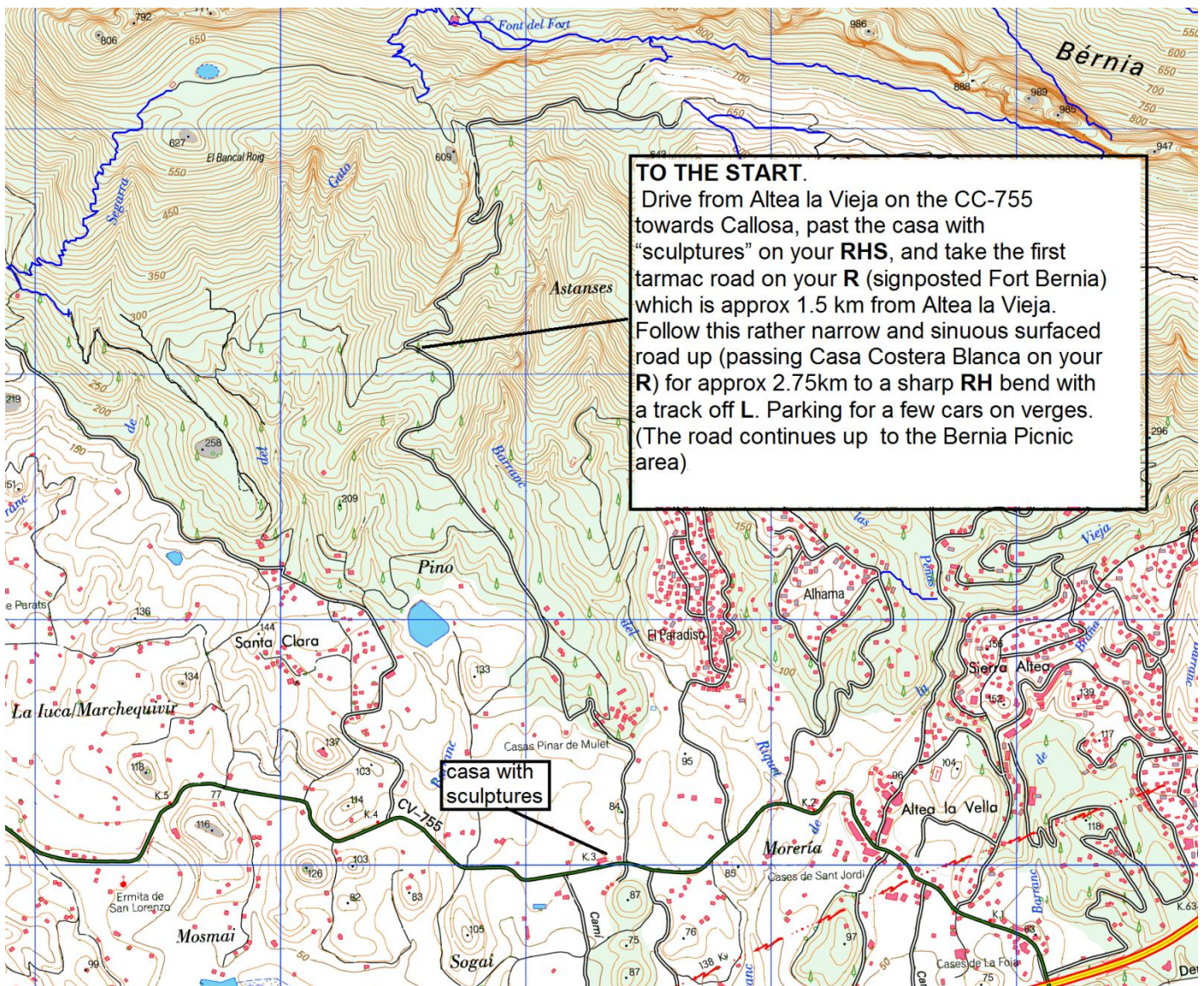
WRITE-UP BY: Michael Davies daviesmt@googlemail.com **VERIFIED** Nov 2014

LEGAL NOTICE: Although we strive to make descriptions as correct as possible, use at your own risk.

DESCRIPTION.

A fourth way to climb Sierra Bernia from the South up part of the old mule track of the Camino de Jalon with a superb view from "Rock Gate" col near the top. Possible detour to climb the spectacular peak of Severino.

Seductively easy for the first hour along forest tracks. Then steep up the Camino Jalon mule path to the ruins below Severino. Level track to a small plateau above the "Cave House", followed by another steep mule path to "Rock Gates" col, (possible ascent of Severino. Described later) and then right to the Fort. From the Fort a new (2010) path leading down to the Picnic Area. The 40mins down the surfaced road to the cars could be avoided if enough cars were prepositioned at the picnic area.



SOUTH WEST BERNIA

THE START.

Note that times quoted are walking time only. - no breaks.

Underlined letters are map references.

Total distance and
%of walk completed
based on total time

Walk down the track going **SW**. Arrive at a track off sharp **R** **A** which we ignore. **(20min 1.4km)** 1.4km 9%

Continue to wind down on the main track to a crosstrack **B**. **(3min .2km)** 1.6km 11%

Note the track going down the barranco which leads to Santa Clara. But you continue up **R** to reach small plateau, with 4 ways off **C**. **(6min .4km)** 2.0km 13%

Note the track going **L** to Santa Clara and ignore the one going up **R** but take the middle one winding down **(NW)** round a sharp curve and up **R** to a junction with a track on the **LHS** which is blocked by a boulder **D**. **(10min .7km)** 2.7km 18%

Take this track going down **L**, (*which is now downgraded to a path due to many minor landslides*) to reach a T-junction **E**. **(4min .2km)** 2.9km 20%

Turn **R** up and soon reach the sharp corner of concrete road **F**. (*from Fuentes Algar*). **(2min .1km)** 3.0km 21%

Turn **R** up road to old track sharp off **R** (about 74mtrs.) Take this rough track up to bee caution sign and find path off **L** **G**. **(4min .1km)** 3.1km 22%

Climb up this rather steep zigzag mule path to eventually pass Bardalet Cave **H** on your **LHS** and reach a T path with a signpost PRCV48 to Fort. **(32min 1.2km)** 4.3km 37%

Go up **R** to the ruins (Bancal Roig Animal Pen) on a plateau **K**. **(2min .2km)** 4.5km 38%

(The Camino Jalon continued from behind the ruins climbing steadily across the mountainside to the Rock Gate Col. and although there are some seductive way marks these, at present, peter out when the going gets really rough. Hopefully one day this old path will be restored.) So instead you continue along the new level track, passing a declivity on your **LHS**, which occasionally fills with water, to reach a graveled surface and a small circular clearing **N**. **(15min 1.1km)** 5.6km 45%

(The graveled track continues down past the "Cave House" to reach the surfaced road in about 10min. Your car is 25 mins down the road, which gives an opportunity to shorten the walk.)

From clearing find mule path zigzagging up **L** (signposted to Fort) and climb this clearly marked path until reaching the walk sign of Cami Del Fort **P**. **(20min .8km)** 6.4km 54%

*Your ultimate route is up **R** to the Fort but to reach the "Rock Gate" you veer **L**. (On your way up note a 'pathlet' going off up **L** towards a cleft. This is the way up Severino. See Below.), At the Rock Gates look **N** to Ovenga in the foreground, which is separated from the Sierra Ferrer by the deep cleft of the Paso Bandoleras, and on to col de Rates. With Segue and Tarbena round to the Castelet of Bollula on the **L**.*

To continue walk, take newly renovated (2010) path heading **SW** up to the Fort. Continue from the Font heading **SW** again. Eventually this path divides at a signpost. Up to the Forat and down to the Font Runar (signpost direction Font del Garreferel). Pass Font Runar and down to meet the track at a deposito. Continue along the track by casas to meet the tarmac road. **(60min 1.4km)** 8.8km 82%

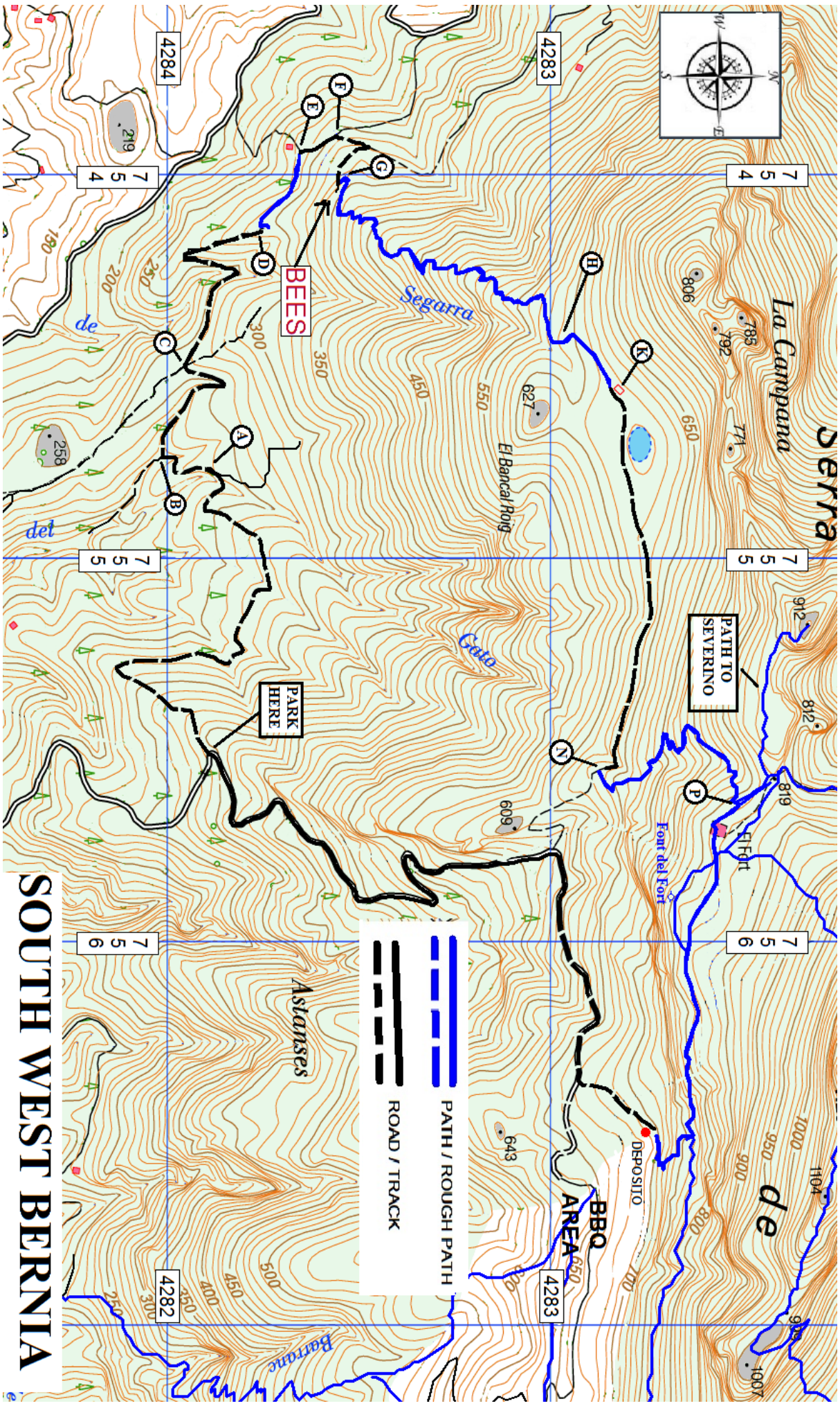
Turn **R** down to your car(s). **(40min 2.1km)** 11.0km 100%

NOTE: This rather steep walk down surfaced track can be avoided by spotting a car at the top.

ASCENT OF SEVERINO. (Altitude 912 metres)

Take pathlet west passing first peak and choose best pathlet aiming for the small Gap between two pinnacles, which you pass between to reach a flatter area called "The Shelf". Continue west passing large cairn to foot from where the peak rises, (small pine tree) and find a red spot a couple of metres up on the rock. This marks the start of the easy scramble, which is way marked with red dots up the **SE** side to the summit with its vertiginous cliff and superb views.

(On way from "Gap" to the pine tree take back sights to help find the Gap on your return.)



SOUTH WEST BERNIA

