

COSTA BLANCA MOUNTAIN WALKS

BOLULLA. CIRCUIT TO NORTH WEST.

O20

BOLULLA - "PINNACLE"- FOIA SELLES'- EL BLANQUINALS – BOLULLA.

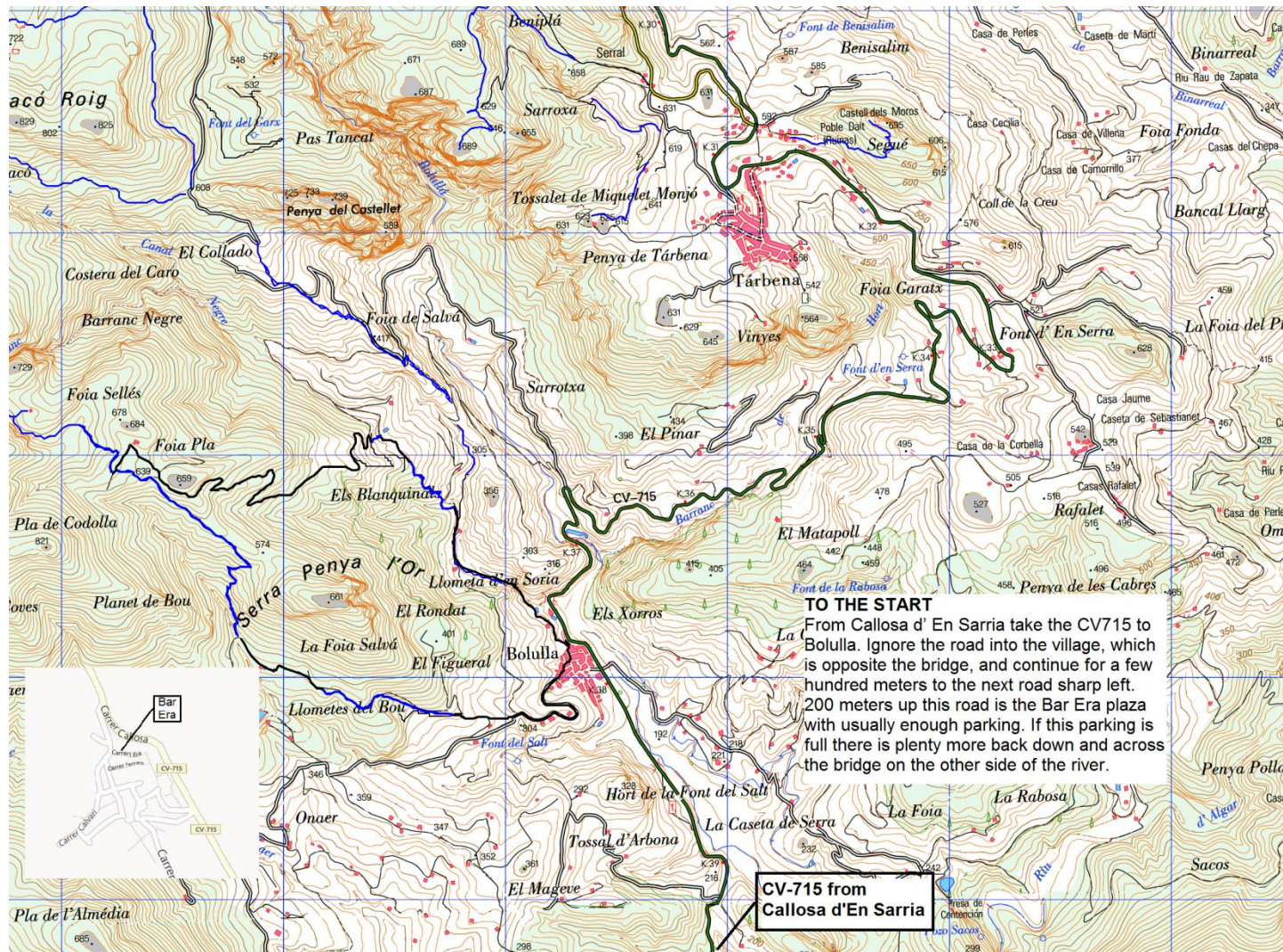
WALK DESCRIPTION BY: Michael T. Davies davies.mt@googlemail.com VERIFIED Dec 2011

LEGAL NOTICE: Although we strive to make descriptions as correct as possible, use at your own risk

WALK STATS: DISTANCE 8.9km - **WALKING TIME** 2 ¾ hours – **ASCENT** 450meters - **Grade** MS
(Walking time only – add time for breaks and lunch)

WALK DESCRIPTION

A satisfying circular walk including a little known old mule path to a lunch stop at Foia Selles with its spectacular 360 degree views and ending at the Bar Era. A mix of good paths tracks and surfaced roads.



COSTA BLANCA MOUNTAIN WALKS

BOLULLA. CIRCUIT TO NORTH WEST.

BOLULLA - "PINNACLE"- FOIA SELLES'- EL BLANQUINALS – BOLULLA.

WALK DESCRIPTION BY: Michael T. Davies davies.mt@googlemail.com **VERIFIED** Dec 2011

LEGAL NOTICE: Although we strive to make descriptions as correct as possible, use at your own risk

WALK STATS: DISTANCE 8.9km - **WALKING TIME** 2 ¾ hours – **ASCENT** 450meters - **Grade** M/A
(Walking time only – add time for breaks and lunch)

THE WALK.

**Total distance and
% of walk completed
based on total time**

UNDERLINED LETTERS ARE MAP REFERENCES.

The walk starts at the Bar Era in Bolulla, (generally enough parking in the morning). Walk a short way down the road leading S . Take the first R to the T -junction of C. Calvari. Turn L (W) up C. Calvari and follow the tarmac road past casa Crisha & casa Capelettes. Continue up passing mesh fences on your LHS to reach a Y junction and a metal post marked with red and blue arrows A . (16mins 1.1km)	1.1km 10%
Follow the direction of the arrows and walk up LH concrete road for a few paces to find cairn on RHS marking start of the old mule path to the "Pinnacle". This old path used to be very overgrown but has now been cleared and waymarked with red dots. It skirts the N side of a small valley to arrive at a track with cairn B . (Shady stop) (15min. .8km)	1.9km 20%
Turn L (W) along track for some 400metres through old plastics (shredded fruit tree covers). Track bears L and then in a few meters bears R to pass ruined casita on LHS . Carry on passing a roofless concrete hut on RHS and soon reach a wide area at the foot of a barranco with prominent pinnacle of rock C . (10min. 0.5km) <i>(The track goes on to Callosa and you can drive to within a kilometer of the Pinnacle, see map, so a good in & out walk up to Foia Selles can be made from here).</i>	2.4km 26%
Leave the track and on the R (NNW) find a good path winding up on the east side of the barranco to eventually reach a cross track D . <i>(This path is marked by various colored way markers)</i> (28min 1.5km)	3.9km 44%
Turn L and in a few meters find a path going up R . Follow this path up to the top of Foia Selles for a lunch stop with magnificent views E . (10min 0.4km) <i>(The old path Continues up the rough Barranco Negre to Morro Blau and on to Font de Teja).</i>	4.3km 51%
Retrace your steps back to the track D . (10min 0.4km)	4.7km 57%
Turn L follow the track which soon passes a stone coral on your LHS . Continue down the track eventually passing a stone shelter on your LHS . Ignore next track off R . Arrive at a cross track F . (34min 2.4km)	7.1km 79%
Turn sharp R , <i>(This track leads to a small farmhouse)</i> . After a couple of minutes look carefully for a path going down L at the beginning of an olive bancale. <i>(This path is marked by a blue dot and is about 50 meters before arriving at farmhouse)</i> . On the first bancale turn L and follow path down to a track. (6min 0.4km)	7.5km 83%
Turn R and continue to arrive at a 4-way junction G . Continue straight on to a corner with a cairn. Drop down the bank to a large pine tree and two cairns marking the start of a mule path down . (2min .1km)	7.6km 84%
Wind down the mule path to the bottom near a concrete road. The path goes around the flat area before going up slightly R to reach the road at twin cairns H . (10min .4km)	8km 90%
Turn R and follow road back to the Bar Era. (15min).9km)	8.9km 100%

