

COSTA BLANCA MOUNTAIN WALKERS - WALK DESCRIPTION

Visit www.walksinspain.org for more walks descriptions in Spain

Walk description originally prepared by:-	Jean and Bob Hall, Ralph Phipps
Last Updated	12 th April 2023
Title of Walk	Castells to Famorca circuit
Location of Start (include name of nearest village/town at start of description)	Castell de Castells Car park in village centre opposite Hotel Serrella
Key Statistics for walk - Distance in km	19
Key Statistics for walk - Ascent in m	764
Key Statistics for walk - Walking time and total completion time including any stops	5.5hr 6.5hr
Key Statistics for walk - Grade (using CBMW system)	S/A
Grid reference of start point (if known)	Lat: 38.723848 Long: -0.194751
Directions to Start	Castell de Castells.. Take the CV720 from Parcent and Benichembla to Castell de Castells. In the village, immediately opposite Hotel Serrella (on the RHS) turn L. After 20 m. turn L again into Calle Jose Antontio and them almost immediately L again down a ramp into the signed parking area
Short walk description	Starting in the picturesque village of Castell de Castells, up to ridge overlooking Malla de Llop canal, down to the village of Famorca and back to Castells via very good paths and remote tracks, another great Sierra de Serrella walk.
Full Walk Description	Elapsed Walking Time/Distance so far
Starting from the car park in the village, leave the carpark up the ramp and turn R. Proceed straight ahead down the narrow street. Continue along the road and bear L down the small hill and past the font. Proceed over the bridge and up to the road. Turn L and after 50m turn R up the concrete road <u>Time and distance start from the concrete road</u>	
.....signed to the castle and the campground. A	0.6km
Follow Y/W waymarked unpaved track to its end B .	1.3km
Continue up on good path to meet a cross track C .	2.1km

Remember that you use these walk guides at your own risk. Take precautions and if unsure – turn back!

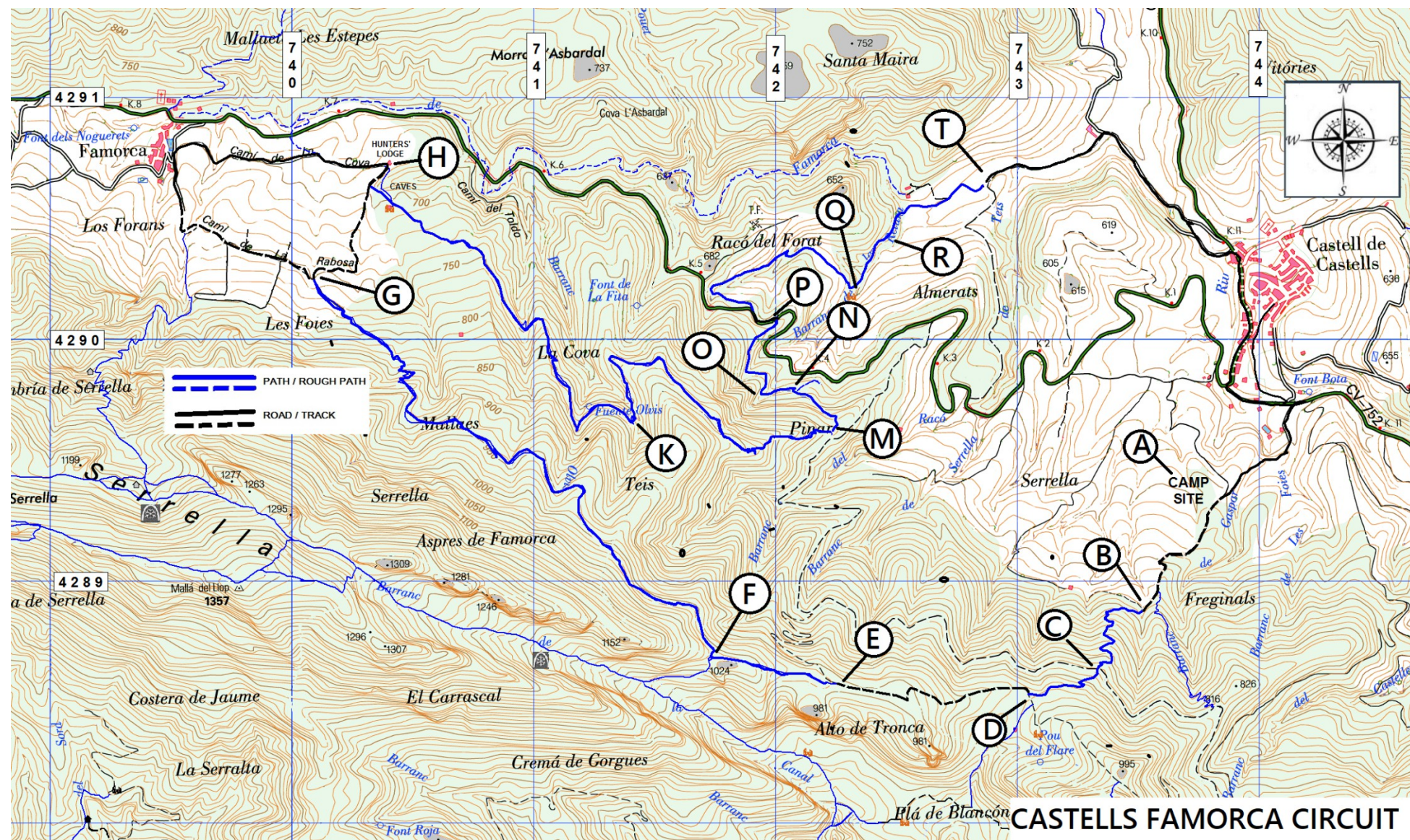
COSTA BLANCA MOUNTAIN WALKERS - WALK DESCRIPTION

Cross track and find continuation of path. follow to crosstrack D .	2.5km
Turn L on track and continue to flat area with animal enclosure E .	3.5km
Follow, vague at first, path just to the R of animal enclosure heading west, skirting RHS of crest to arrive at cross path and metal hunter's sign F . <i>Before continuing walk a little to the L for a nice view of the Malla de Llop canal.</i>	4km
Find continuation of path down R . Follow path to track G . <i>NOTE: From here a nice shortcut which avoids Famorca, for those who have already seen it, takes track R to arrive at hunters' lodge at H below – 1.3km shorter)</i>	7km
Take track L . Ignore tracks L and continue into Famorca.	7.9km
At lavadora find cement track going up R . Follow track to Hunters' lodge H . (<i>NOTE: The gully just in front of hunters' lodge has interesting caves that are accessible from LHS of fence surrounding gully</i>)	8.9km
Turn R along fence to path and just past large ruin find path heading SE . Follow path to Font Olvis K .	10.9km
Continue to Y junction. Take lower path marked with Y/W to arrive at cairn and a path off R M .	12.5km
Go straight on (path L) to arrive at cross path N	12.9km
Turn sharp L to Font de la Retura O . Continue, passing another font, to main road P .	13.5km
Go L up road around first bend and find track off R (by black and white road bend arrows).	13.7km
Take track ignoring track off R . Track soon becomes a path. Pass interesting ruin that appears to be some kind of ancient mill Q . Arrive at a wide, stony riverbed R .	15.1km
Cross riverbed and bear R on old track along riverbed edge. Cross riverbed again and continue following riverbed to paved track T . Turn L to arrive at recycle bins.	16.1km
Turn R up paved road. Pass depuradora. Cross river on narrow cement foot bridge, pass deposito and lavadora. Re-cross river, up to street, R back to car(s).	18km
<small>Spanish maps included within these descriptions are provided courtesy of the Spanish IGN and remain © Instituto Geográfico Nacional</small>	
Walk Recommendations or restrictions	None

see map below.....

Remember that you use these walk guides at your own risk. Take precautions and if unsure – turn back!

Route followed is outlined in Blue



CASTELLS FAMORCA CIRCUIT

Remember that you use these walk guides at your own risk. Take precautions and if unsure – turn back!