

COSTA BLANCA MOUNTAIN WALKERS - WALK DESCRIPTION

Visit www.walksinspain.org for more walks descriptions in Spain

Walk description originally prepared by:-	Jean and Bob Hall, Dec 2013
Last Updated	19 th May 2021
Title of Walk	Castell Granadella Circuit from Cumbre del Sol
Location of Start (include name of nearest village/town at start of description)	Benitatxell Roadside parking above ridge to castle
Key Statistics for walk - Distance in km	8.5
Key Statistics for walk - Ascent in m	378
Key Statistics for walk - Walking time and total completion time including any stops	2.5hr 3.5hr
Key Statistics for walk - Grade (using CBMW system)	M/C
Grid reference of start point (if known)	Lat:- 38.724392 Long:- 0.16973
Directions to Start	From the N332 (between kilometre 181 and 182) take the CV740 to Teulada. Go straight ahead at the 1st roundabout. At the 2nd roundabout exit L towards the roundabout with the metal fish. At this roundabout go straight ahead and take the dual carriageway through Teulada. At the end of the shopping area at another roundabout look carefully for the turn off L which is the continuation of the CV740 to Benitatxell. Go through Benitatxell following signs to Javia (Xabia). Just before leaving the town turn R direction Cumbre Del Sol. Go up on this road and then follow signs to HIPCA BAR. At Y junction, just after the large "information" sign bear L. Park where the road turns sharp R and an unpaved track goes straight ahead. The walk begins here.
Short walk description	This is an easy walk although there are some very steep uphill sections. The coastal path is a little exposed in places but a couple of chains have been placed to aid the walker. It starts at Cumbre Del Sol at an elevation of 190 meters with a pleasant flat track walk before descending on a path to reach the beach of Cala Granadella. A very stiff uphill walk is rewarded by a beautiful coastal path to the ruins of Castell Granadella. The ruins of this horseshoe shaped building, which was once part of the Valencia Coastal defence, date back to 1739. It was ruined by the English during the Napoleonic war. From the Castell there is another steep climb (with lovely wild flowers in spring) to the Mirador de Llevant. A stop to admire the

Remember that you use these walk guides at your own risk. Take precautions and if unsure – turn back!

COSTA BLANCA MOUNTAIN WALKERS - WALK DESCRIPTION

views is followed by an easy track walk back to the start.

Full Walk Description

Elapsed Walking Time/Distance so far

Follow the unpaved track keeping **L** at all junctions to reach chained off track with little stone pillars

7min, 500m

Cross over chain. Continue along this track dropping down along a spur with some concrete sections always keeping **L** at all junctions to arrive on the level part of the ridge at a well marked path going off **R** with Y/W markers **A**.

24min, 1.7km

Take this path which descends to the river bed and then heads towards the sea. Ignore a path going off up **R** partway along. Continue to follow PRCV 354 to Cala Granadella. Arrive at paved road and signpost **B**.

1hr 2min, 3.4km

To visit the beach of Cala Granadella (a nice place to stop for a rest) continue straight ahead. There and back.

1hr 8min, 3.8km

Take the Camino Particular with a no entry sign – Solo Residentes - (on your **L** as you return from the beach) which goes up steeply (PRCV 354 direction Castell Granadella). Be warned this road up is very steep. Follow **Y/W** waymarkers to a track which doubles back to the **L** just before the last house and heads towards the sea and becomes a coastal path **C**.

1hr 18min, 4.4km

The coastal section of this walk is beautiful but adventurous. Before reaching the Castell there is a viewpoint and then are 2 sections of the path where chains have been installed to make the going easier. Arrive at signpost **D**.

1hr 33min, 5.1km

Take the short side trip down to the ruin of the Castell. There and back.

1hr 39min, 5.3km

From the signpost head up and follow the path steeply uphill and with many paint waymarks to drop down to a col and then finally up to the Mirador Levante **E**.
(*The Mirador is a stone structure with no roof.*)

2hr 1min, 6.2km

Take the track beyond the mirador to a junction with a paved road going down **R**.

2hr 9min, 6.7km

Turn **L** and continue along unpaved track. At next junction bear **L** and just past a water deposito **G** look for a path off **L**. This path offers a pleasant alternative to the track for a short stretch. Continue to arrive at the outward track. Bear **L** and head towards the development of Cumbre Del Sol. Follow track back to car keeping **R** at all junctions.

2hr 33min, 8.5km

Spanish maps included within these descriptions are provided courtesy of the Spanish IGN and remain © Instituto Geográfico Nacional

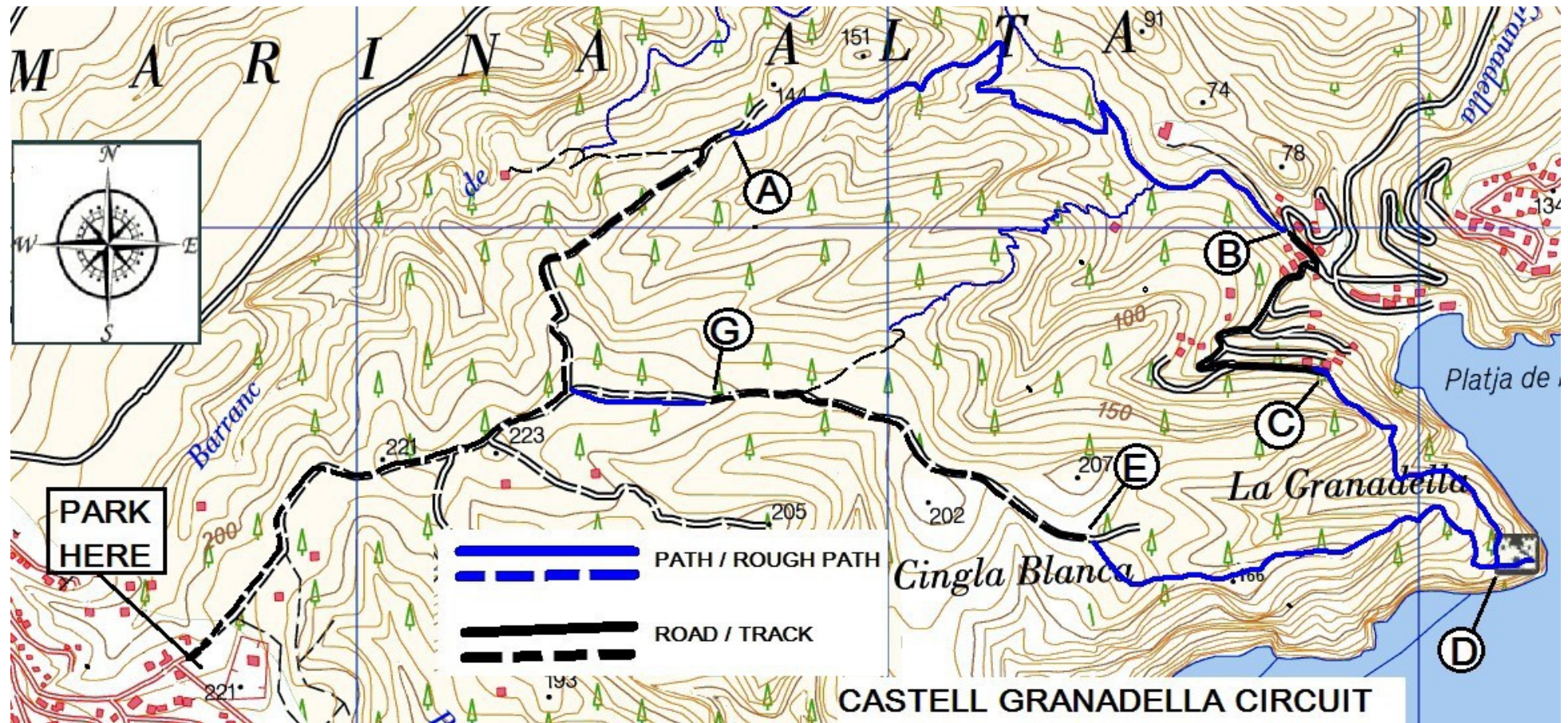
Walk Recommendations or restrictions

Very rocky going in places. Could possibly start the walk from the Cala Granadella although parking there is very limited.

See map below.....

Remember that you use these walk guides at your own risk. Take precautions and if unsure – turn back!

Route followed is outlined in Blue and Black



Remember that you use these walk guides at your own risk. Take precautions and if unsure – turn back!