

## **COSTA BLANCA MOUNTAIN WALKERS - WALK DESCRIPTION**

Visit [www.walksinspain.org](http://www.walksinspain.org) for more walks descriptions in Spain

<b>Walk description originally prepared by:-</b>	Jean & Bob Hall hallbobandjean@aol.com	
<b>Last Updated</b>	01/02/12	
<b>Title of Walk</b>	Facheca - Famorca circuit	
<b>Location of Start (include name of nearest village/town at start of description)</b>	Facheca Beside tennis and sports club.	
<b>Key Statistics for walk - Distance in km</b>	14.4km	
<b>Key Statistics for walk - Ascent in m</b>	808m	
<b>Key Statistics for walk - Walking time and total completion time including any stops</b>	4.5hr 6hr	
<b>Key Statistics for walk - Grade (using CBMW system)</b>	VS/A	
<b>Grid reference of start point (if known)</b>	Lat: 38.733821, Long: -0.272808	
<b>Directions to Start</b>	Take the CV720 from Castells de Castells to Facheca/Fageca. Pass through village, turning off <b>L</b> at the sign for Quatretondeta. Drive approx. 300 meters down the road and park on the <b>L</b> by tennis/sports club. The walk starts here.	
<b>Short walk description</b>	N side of the Sierra de Serrella, steep climb to Font Roja, at head of Barranco Hondo. Below summit of Pla de la Casa to head of Barranco del Moro. Passing below Pico de Serrella then final climb to Malla del Llop ridge. Ridge to summit of Pico de Serrella then descend to snow well. Mule path zig zags steeply down to village of Famorca. Finally good leg stretcher along track back to Facheca.	
<b>Full Walk Description</b>	<div> <div> <b>Elapsed Walking Time/Distance so far</b> </div> <div> From the parking spot walk back up the road towards the village of Fageca (Facheca) and turn <b>R</b> on minor road signposted as 'Cami del Comte Meieral'. <b>(3min 0.2Km.)</b>  <b>3min 0.2km</b> </div> <div> Walk up the road to the end. A narrow path starts where the road ends <b>A</b>.  <b>(11min.0.8km.)</b> </div> <div> Head straight uphill following the shape of the ravine to soon reach a path, marked by </div> </div>	
	<b>14min 1km</b>	

**Remember that you use these walk guides at your own risk. Take precautions and if unsure – turn back!**

## **COSTA BLANCA MOUNTAIN WALKERS - WALK DESCRIPTION**

a cairn, going up off **R**. Take this path which after bearing to the **L** heads directly up the mountain before drifting to the **R** and flattening out. The path passes over two ravines (Barranco del Ginebrar and Barranco del Bou) then under a grey rock face before arriving at an attractive grey-stone well and a drinking trough for livestock **B**. **(43min.2km.)**

**57min 3km**

Now the path is clearly way marked **Y/W**. It turns uphill and climbs steeply before bearing **R** across the slope to reach the 'Barranco Hondo'. The path goes up the side of it and offers spectacular views down the ravine. Half way round is the Font Roja natural spring **C**. Here water canteens can be filled and there are a couple of picnic tables for a sit down. **(28min. - .9Km.)**

**1h 25min 3.9km**

From the 'font' follow the sign for Pla de la Casa (*summit 1,379*). At the next signpost take path **L** to arrive at cull where the steep final ascent to Pla de la Casa begins. Do not follow the sign to Pla de la Casa but look for a path going straight ahead **D**. **(9min. - .4Km.)**

**1h 34min 4.3km**

Follow this path which circles the mountain. It passes across some rough screes heading for the saddle at the **E** end of Pla de la Casa. After crossing the screes, when the path becomes good and distinct, look for a junction of minor paths **E**. **(20mins. – 1Km.)**

**1h 54min 5.3km**

Look for a minor path going off **R** and up to the top of a low ridge. This ridge passes above the Barranco del Moro which leads down to the town of Facheca. Traverse this ridge staying on top for as long as possible when the way along the top becomes difficult drop down a little to the **LHS**. At the end of the ridge the path will slowly descend to the bottom of a cull **E**. **(20min.- 1.2Km.)**

**2h 14min 6.7km**

Continue straight on (east) and up the other side of the cull. The path goes across a small strata of rocks then zig zags up a little before bearing **R**. and crossing several screes. Keep the ridge of Malla de Llop close on your **L**. Your next objective is to reach the lowest point of this ridge which can be seen ahead. Look for a large dead pine tree with two trunks just below the ridge. About 10 meters **L** of this tree there is a way up to the top of the ridge **G**. There is no distinct path and it is steep but not difficult. **(15min.-.8Km.)** .

**2h 29min 7.5km**

At the top of the ridge turn **L (W)** keeping near the edge of the ridge to arrive at a large cairn marking the summit of Pico de Serrella **H**. **(12min.-.4Km.)**.

**2h 41min 7.9km**

Pass the cairn and bear **R (NNW)** to a small rock outcrop. Bear **R** and descend to a lookout area at the head of a valley. Take a few paces **L** to admire the great view towards Pla de la Casa **K**. **(2min.-.2Km.)**

**2h 43min 8.1km**

Head down the valley (*away from Pla de la Casa*) **(E)**. The next objective is a clear path which can be seen off to the **RHS**. Reach this path and follow it to arrive at a wonderful old nevera **M**. **(20min.-.9Km.)**

**3h 3min 9km**

At the nevera make your way down **(N)** to a small concrete water hut at a fuente.

**Remember that you use these walk guides at your own risk. Take precautions and if unsure – turn back!**

## **COSTA BLANCA MOUNTAIN WALKERS - WALK DESCRIPTION**

Continue past the fuente across a flattish muddy area to find an old mule path which zig zags down to the village of Famorca. The path is a little rough at first but soon improves and passes several water huts on the way down. Ignore a track and continue on the path to arrive at a surfaced road **N** . **(44min.-2Km.)**

**3h 47min 11km**

Turn **L**. At the village take the road that passes between the lavadora and a children's play ground. Follow this road towards the church. Before arriving at church turn **L** and continue up through the village. At the end turn **R (NW)**. Keep to the main surfaced track ignoring three concrete tracks off **L** and a track off **R**

Spanish maps included within these descriptions are provided courtesy of the Spanish IGN and remain © Instituto Geográfico Nacional

**Walk Recommendations or restrictions**

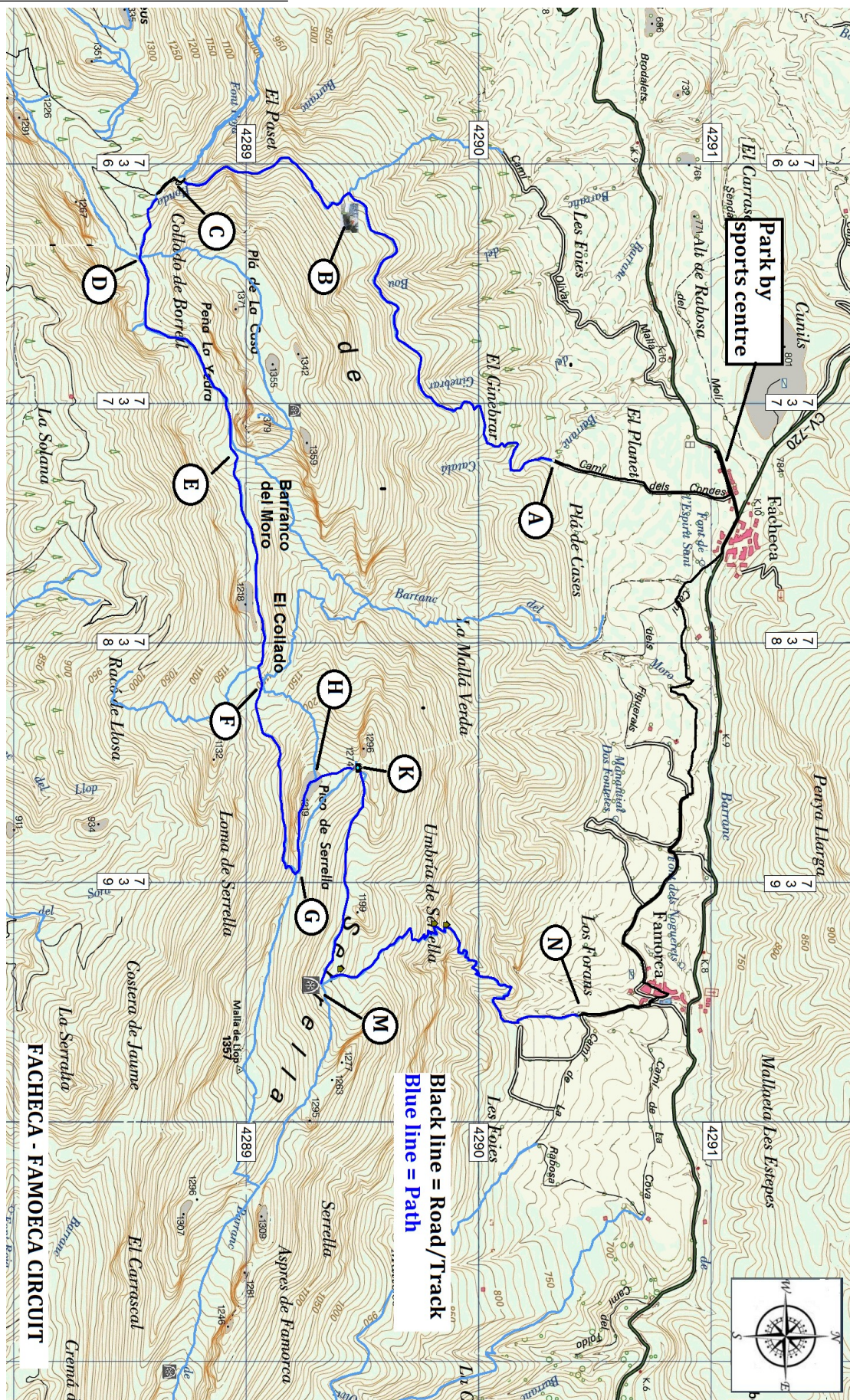
None

see map below.....

**Remember that you use these walk guides at your own risk. Take precautions and if unsure – turn back!**



**Route followed is outlined in Blue**



**Remember that you use these walk guides at your own risk. Take precautions and if unsure – turn back!**