

## **COSTA BLANCA MOUNTAIN WALKERS - WALK DESCRIPTION**

Visit [www.walksinSpain.org](http://www.walksinSpain.org) for more walks descriptions in Spain

|   |  |
|---|--|
| <b>Walk description originally prepared by:-</b>  | Jo Fletcher  |
| <b>Last Updated</b>   | 2 July 2017  |
| <b>Title of Walk</b>  | Ojedo to Tudes   |
| <b>Location of Start (include name of nearest village/town at start of description)</b>     | Start in Ojedo rather than Potes as you avoid the crowds and should find parking easier. There is a roundabout by the Hotel Pena Sagra. You can park close to here on any of the roads that join the roundabout however if you take the road towards Potes on the N621 there is parking L and R at the Dia supermarket.  |
| <b>Key Statistics for walk - Distance in km</b>   | 16km   |
| <b>Key Statistics for walk - Ascent in m</b>  | 700m   |
| <b>Key Statistics for walk - Walking time and total completion time including any stops</b> | 4hr<br>5.25hr  |
| <b>Key Statistics for walk - Grade (using CBMW system)</b>                                  | S/B  |
| <b>Grid reference of start point (if known)</b>   | Lat:- 43.16071, Long: -4.61214   |
| <b>Directions to Start</b>  | Ojedo is the village before Potes on the N 621 approaching from the N or the CA 184 if approaching from the S.   |
| <b>Short walk description</b>   | A circular walk that takes in the villages of Frama, Lubayo and Tudes. There are extensive views of the local area and the unusual sight of cork oaks that have been 'farmed' as you return to Potes and Ojedo.  |
| <b>Full Walk Description</b>  | <div> <div><b>Elapsed Walking Time/Distance so far</b></div> <div> <p>Depart from the roundabout and pass the Dia supermarket on your L. Ahead and slightly left you will see a road climbing away from the main road. This is the start of your walk. Climb up the road until you reach a road junction with a road joining from the R and the road straight ahead.</p> <p>Go straight ahead and follow the single track road with the Rio Bullon below and L. The track undulates down to the village of Frama. When you reach Frama stay on the main narrow road and pass a derelict trout farm on your L before entering a large open area.</p> </div> <div> <p>350m/5min</p> <p>1.8km/24min</p> </div> </div> |

**Remember that you use these walk guides at your own risk. Take precautions and if unsure – turn back!**

## **COSTA BLANCA MOUNTAIN WALKERS - WALK DESCRIPTION**

|   |                |
|---|----------------|
| Leave the open area up the track ahead and R. This track climbs steeply before joining a road.  | 2.3km/33min    |
| You now continue up the road until you reach the deserted village of Lubayo. This is still a working village but the housing appears to have been abandoned and is only occupied during the day.  | 3.5km/56min    |
| Pass through the village and as you reach the top of the village bear L at the water trough. You are now on a farm track which continues to lead you up the hill in more open terrain heading towards the pine forest on top of the hill ahead of you. As you arrive at the tall pines the track meets a T junction.  | 4.8km/1hr26min |
| Turn L and continue gently up until after 150m you reach a track junction where you bear R and continue up the hill to the col.   | 5.3km/1hr34min |
| At the top of the rise you arrive at a fire break. Your route is straight ahead but take the opportunity to climb up the fire break on your R. You will reach the lookout point of Collado de Porcieda and be rewarded with spectacular views around and across the valley. Return down the fire break and turn R and down the track. The track now descends and you shortly get a view of your next village of Tudes. Continue down and enter the village. | 7.4km/2hr6min  |
| Continue into the village centre and across the central square. Ahead you will see the village bar which is worth exploring. Food is normally served.   |                |
| Return to the centre of the village and take the road to your L and down. The road has walking signs with binoculars and points to Porcieda. As you near the lower reaches of Tudes there is a track that turns R off the road with signs. Turn R. The track now descends gently with meadows either side. Keep on the main track and follow the signs. You will shortly reach the old derelict village of Porcieda.  | 8.9km/2hr30min |
| You leave the village on the path into a meadow before entering the trees and steadily starting to climb. After 700m the path takes a sharp R turn however there is a small path straight ahead. This is a small short path 20-30m to El Convento. This is the ruins of an old religious building.  | 9.6km/2hr42min |
| On re-joining the main path it now starts to gently descend through a wooded area that is interspersed with large cork oak trees that show the obvious signs that the cork has been removed. As the path drops lower down the hill the path becomes a track and is joined from the R by a further track.  | 11.4k/3hr11min |
| Continue straight ahead and down on the obvious main track and shortly you will see the town of Potes appearing in front of you. As you get closer to the town the track turns into a road and you soon reach the buildings of the town. Make your way to the main road.  | 13.7k/3hr45min |
| Turn R on the main road and follow the road past a car parking area on your L and then to the next obvious corner where the road turns L and joins the main road through Potes. On the corner prior to the road T junction, take the minor road down the side of the Hostal and the 4 Wheel Drive tour offices on Camino Viejo.   | 14k/3hr50min   |

**Remember that you use these walk guides at your own risk. Take precautions and if unsure – turn back!**



## **COSTA BLANCA MOUNTAIN WALKERS - WALK DESCRIPTION**

You now follow this minor road for about 800m until you reach a road junction and the road takes a R turn. You can see Ojedo down to your L. You Turn L at this junction and head back down the hill to the start where you parked your car.

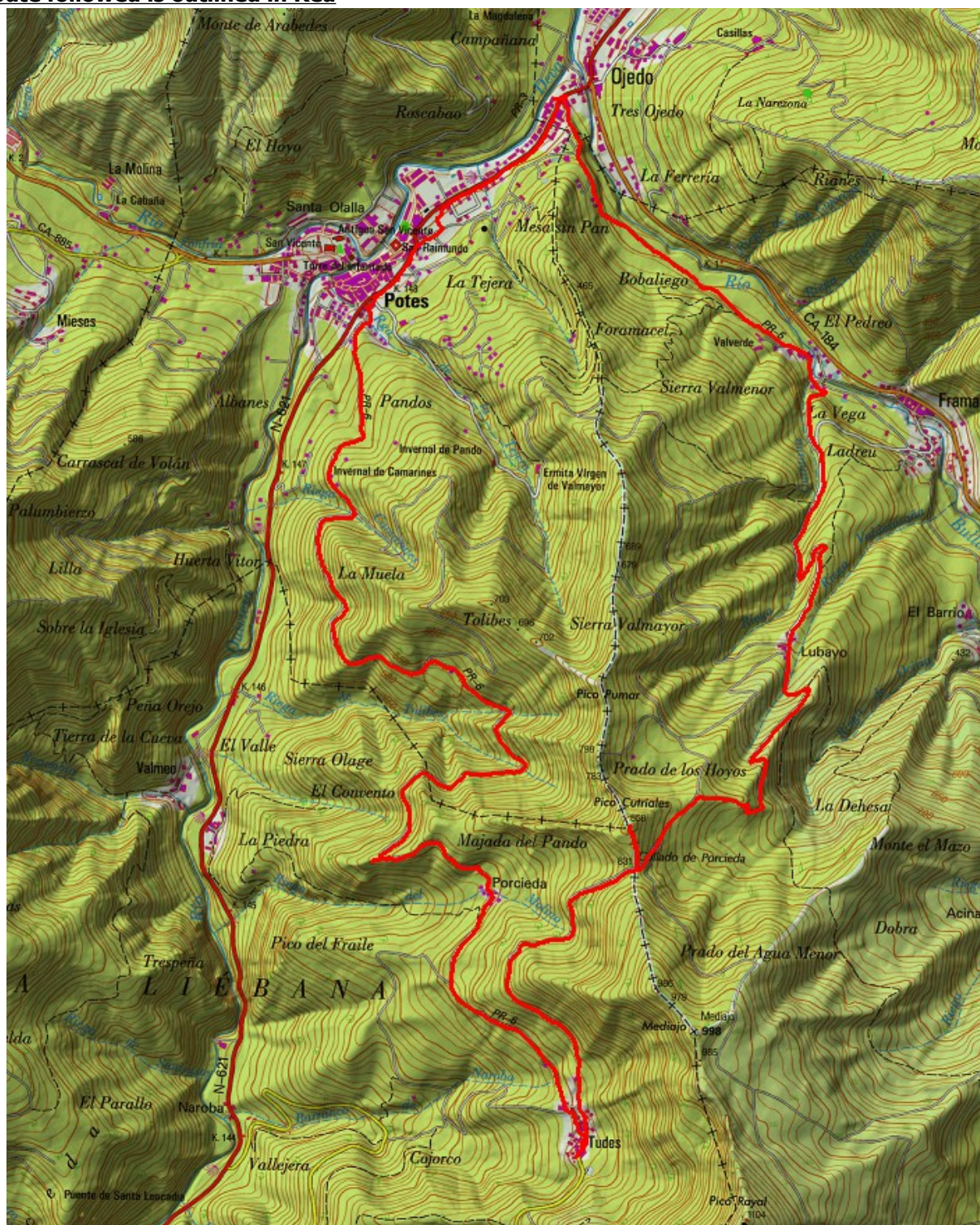
15km/4hrs

Spanish maps included within these descriptions are provided courtesy of the Spanish IGN and remain © Instituto Geográfico Nacional

### Walk Recommendations or restrictions

None

**Route followed is outlined in Red**



**Remember that you use these walk guides at your own risk. Take precautions and if unsure – turn back!**