

COSTA BLANCA MOUNTAIN WALKERS - WALK DESCRIPTION

Visit www.walksinSpain.org for more walks descriptions in Spain

Walk description originally prepared by:-	Marc Jenner
Last Updated	26 th October 2017
Title of Walk	Bodoix via Castell D'Ambra - Extended
Location of Start (include name of nearest village/town at start of description)	Pego Plaza del Metge Almela, above Plade la Font, Paseo Cervantes Plaza.
Key Statistics for walk - Distance in km	14
Key Statistics for walk - Ascent in m	680
Key Statistics for walk - Walking time and total completion time including any stops	- ?? 5.5hr
Key Statistics for walk - Grade (using CBMW system)	S/B
Grid reference of start point (if known)	Lat: 38.838379, Long: -0.121313
Directions to Start	From Orba on CV715 turn L after PEGO town sign (large steel pylon on corner) into wide road. Continue to Stop sign and you're there. From El Vergel/N332 on CV700 turn R at 2nd island signed Adsubia. Straight on over two islands, L at 'T' junction, pass Mercadona on LHS, straight on at next island, straight on at Stop sign, R immediately after college and you're there.
Short walk description	Small amount on roads but mainly on good marked tracks and paths albeit a short stretch of path is a little rocky underfoot. Lovely views, particularly from the castle.
Full Walk Description	Elapsed Walking Time/Distance so far
<p>Leave the plaza at the mailboxes and go L(ef).</p> <p>Immediately R(ight) c/Sant Joaquim, later Avinguda II-Lustrat Joan Sala.</p> <p>Reaching walking signposts go R direction Tormos (photo 1) and always follow the W(hite)Y(ellow) signs</p> <p>By Y cross-roads straight on, take the forest path (photo 2).</p>	

Remember that you use these walk guides at your own risk. Take precautions and if unsure – turn back!

COSTA BLANCA MOUNTAIN WALKERS - WALK DESCRIPTION

At T cross-roads go R.

T cross-roads with walking signpole L(ef) uphill (photo 3).

Next T with sign go L.

By sign "Ambra" (photo 4) again L and at a Y R and take the stairs up tot the castle. On top hold R untill a small building on the left hand. Here you have a beautiful view all over the valley and Pego (photo 5) (45 min.- 2.6 km).

Go back the same way (photo 6): on T L downstairs and at signpost R.

Next signposts R en go down untill 3 signpostst. Go L on the paved road (photo 7)

At a hiking pole (WY) (photo 8) take L the forest path uphill untill two houses. Go R between the houses, leave the WY signs and follow W(hite)G(reen). Keep the electricity pylons (photo 9) on the left hand.

Reaching signs (photo 10) take L and follow "Figuereta". At next signs R "Ebo-Figuereta" and follow this path untill a paved road (photo 11). Go right up and follow this road untill you reach the refugio "Figuereta" (3u30 incl. small stops and fruitstop).

Keep the refugio on the left hand and go down by following now again the WY signs.

After about a 30 minutes walk from the refugio there's a ruin on the left hand. Keep attention for that. Go L (photo 12!!!) to the ruin (not marked path!!!) and follow a path to the R until a T. Go R downhill.

At a Y with a paved road take R in the direction Pego.

When down at a double concrete course with a river between go R, pass the cemetery and go straight on until you reach the parkside at the plaza again

Spanish maps included within these descriptions are provided courtesy of the Spanish IGN and remain © Instituto Geográfico Nacional

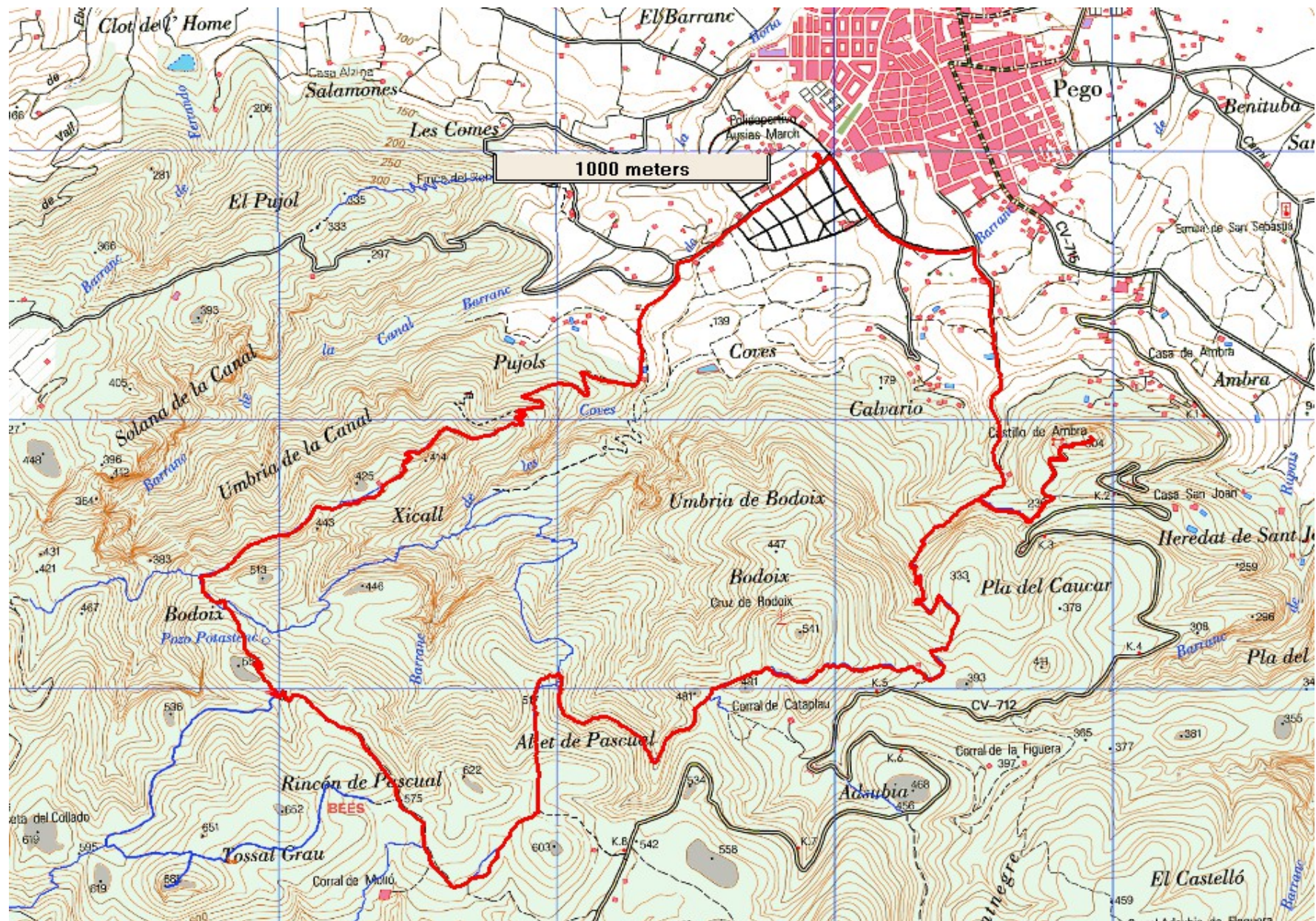
Walk Recommendations or restrictions

Some small stretches up are very rocky underfoot

See map below.....

Remember that you use these walk guides at your own risk. Take precautions and if unsure – turn back!

Route followed is outlined in Red



Remember that you use these walk guides at your own risk. Take precautions and if unsure – turn back!



Photo 1



Photo 2



Photo 3



Photo 4



Photo 5



Photo 6



Photo 7



Photo 8



Photo 8



Photo 9



Photo 10



Photo 11

Remember that you use these walk guides at your own risk. Take precautions and if unsure – turn back!