

<u>COSTA BLANCA MOUNTAIN WALKERS - WALK DESCRIPTION</u>		
Visit www.walksinspain.org for more walks descriptions in Spain		
Walk description originally prepared by:-	Tony and Annette Shaw, Ralph Phipps	
Last Updated	19 th October 2017	
Title of Walk	Dry Waterfall Walk	
Location of Start (include name of nearest village/town at start of description)		
Key Statistics for walk - Distance in km	13	
Key Statistics for walk - Ascent in m	480	
Key Statistics for walk - Walking time and total completion time including any stops	3.66hr 4.75hr	
Key Statistics for walk - Grade (using CBMW system)	MS/C/Scr	
Grid reference of start point (if known)	Lat:- 38.679402, Long: 0.013518	
Directions to Start	Lleus Plaza. 38.679402, 0.013518. From roundabout on N332 just north of Calpe near Km 170 Take Exit towards Lleus. As soon as you leave roundabout turn right along narrow lane towards Lleus. Ignore junctions to left and right. Pass under railway bridge. Follow signs to Lleus and park next to chapel (3.3km from N332 - 8 minutes)	
Short walk description	Lleus to Tossel de Pinos via Barranc with waterfall scramble.	
Full Walk Description		Elapsed Walking Time/Distance so far
<p>From the parking at the Ermita walk away from the motorway downhill on the road and fork R twice uphill, the second time at a sign that reads "Cami de Casamia".</p> <p>As the road levels out on a small plateau there is a third fork where you keep R now gently rising.</p> <p>At the next fork with a makeshift No Entry sign in an oil drum, keep R again and over a small crest.</p> <p>A few metres after the tarmac ends take a rising footpath off to the L.</p> <p>At a fork a little way ahead take the L turn rising on the more "minor" footpath to reach a more major track where you turn R uphill.</p> <p>Pass a couple of minor tracks joining you from the R and keep ahead to reach a major</p>		

Remember that you use these walk guides at your own risk. Take precautions and if unsure – turn back!

COSTA BLANCA MOUNTAIN WALKERS - WALK DESCRIPTION

fork where you fork half R downhill.

Pass a house on your LHS and descend to reach a tarmac road with barriers and now follow this down through zig-zags, under the motorway tunnel and up the other side keeping to the tarmac.

At a junction by a house keep ahead now descending on tarmac.

When you reach a bend to the L where there is a view ahead to a house in the middle distance and a small hillock off to the RHS, the tarmac ends and we turn down at a small cairn onto a footpath which is indistinct for a few metres but then becomes a clearer partially eroded zig-zag path descending to the valley.

Reach the barranco bottom at a cairn, just before which off to your RHS is a ruined well and at the cairn continue ahead now walking up the barranco.

Reach a small plateau area where a track climbs off to the R which we ignore.

When you reach a small crag face about 4m in height you must work up the crack to the R of it for 2m or so and then walk L across the face rising slightly to find an easy exit on either side of a small bush near the top in the middle of the face.

Now you work up a series of small scrambly walls and finally the barranco levels out to reveal an overgrown track leaving up to the RHS. Take this and follow it as it bends R and reaches a junction with another track.

Here seek out a footpath going up to the L by a large boulder just before you reach the track T-jnc and follow this uphill.

This settles into a series of well graded zig-zags climbing up the face of the Tossal de Pinos and finally you crest the ridge.....

and start to descend on the other side – almost immediately losing the noise from the motorway.

Run into a track and continue for a few metres to find a cairn on the LHS at the start of a descending footpath which we take, just in front of a chained driveway.

When this reaches tarmac, turn R and walk uphill ignoring side turnings until you reach a large walled and fenced house garden and here turn R in front of this to quickly start descending.

As you pass the last house the track diminishes to footpath status and you descend down this slightly steeply and awkwardly at times to eventually reach a track where you turn L down towards the motorway.

At its lowest point this turns R to run along beside the motorway and then you reach tarmac and descend to turn L under the motorway and at the far side at a junction turn R to arrive at the parking.

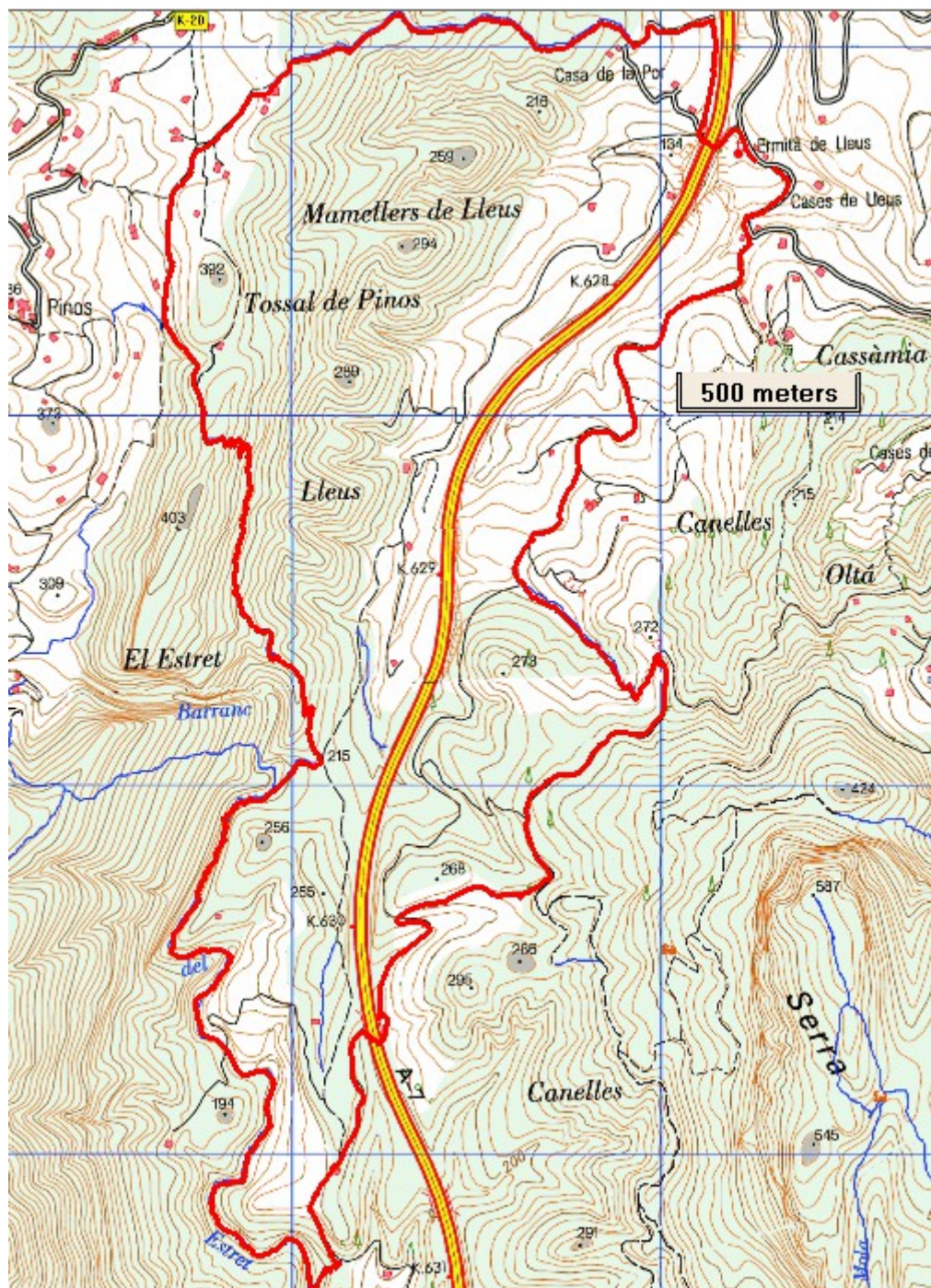
See map below.....

COSTA BLANCA MOUNTAIN WALKERS - WALK DESCRIPTION

Walk Recommendations or restrictions

Need to be comfortable with easy scrambling.

Route followed is outlined in Red



Remember that you use these walk guides at your own risk. Take precautions and if unsure – turn back!