

COSTA BLANCA MOUNTAIN WALKERS - WALK DESCRIPTION

Visit www.walksinSpain.org for more walks descriptions in Spain

Walk description originally prepared by:-	Colin and Brenda Read	
Last Updated	14th October 2017	
Title of Walk	Serrellars Circuit	
Location of Start (include name of nearest village/town at start of description)	Gata de Gorgos. Large gravel car park on Carrer Alcolaes. Opposite a school.	
Key Statistics for walk - Distance in km	9.3	
Key Statistics for walk - Ascent in m	470	
Key Statistics for walk - Walking time and total completion time including any stops	3hr 4.5hr	
Key Statistics for walk - Grade (using CBMW system)	MS/B	
Grid reference of start point (if known)	Lat: 38.77080, Long: 0.082222	
Directions to Start	N332. At km 188.5 at edge of Gata de Gorgos (Benissa end). Turn into C' Lepanto in front of "Muebles Monfort" keep L to cross bridge onto C' Lepanto, follow it to 'T' junction. Turn L onto C' Alcolaes. Park on gravel car park on R, opposite a school.	
Short walk description	A clockwise circuit through delightful countryside, up the Azagador de Seldetes ridge onto the upper plateau & then to the summit. Descend via a spur to Corral de Burrell and return via farm tracks & paths. Virtually all the route is on paths & tracks, with wide ranging views.	
Full Walk Description		Elapsed Walking Time/Distance so far
Turn R and cross the road, go immediately L past bins onto a track. Follow it round a bend, past a building on the R, in about 15m before the next building turn R onto a path. Passing close to a pylon, head into trees to emerge beside villas, at the end of an access track.		5min, 270m
Turn L onto a path, follow it to a surfaced road, go R for a few metres to a 'T' junction. Turn L, at the first bend go straight on to a short track (faded Y/W marks) which loops R back to the road, ignore this and go straight on to a path. At a junction at the end of a bancal turn R, ascend bancals, turn L above a ruin, continue to reach a junction, where		

Remember that you use these walk guides at your own risk. Take precautions and if unsure – turn back!

COSTA BLANCA MOUNTAIN WALKERS - WALK DESCRIPTION

<p>a short track goes R to the road, ignore it (this is where you will junction on your return journey).</p>	14min, 700m
<p>Turn L onto a path, follow it as it traverses terraces, ignore a path which ascends to the R at the end of bancals. The path weaves then rises through bancals to a fork, turn sharp R and go up a few bancals to a level area.</p>	22min, 1.19km
<p>Ignore paths on the R & L, go straight ahead and descend leftwards into the bed of a barranco. Bear L to an open rocky area, now bear R onto a rising traverse, then up to cross the crest of the ridge above, descend a little to junction with a well worn path. This is the Azagador de Seldetes ridge path, of the PR-CV 412.</p>	36min, 1.75km
<p>Turn R and follow the path all the way up the ridge (Y/W markers) going over several rocky shoulders until it levels out at an area of rock slabs, where there is an enclosed well. A good place to admire the views.</p>	1hr 07min, 3.14km
<p>A short distance further along, the path bears to the R and contours along until it enters woodland and eventually reaches a junction, with signboards. (To the L there is a renovated well).</p>	1hr 27 min, 4.47km
<p>Follow directions towards "Cim Serrellars & Gata. PR-CV 388/412" (NW) passing almost immediately beside ruins. Ascend gently uphill to a large cairn on a rocky shoulder, the path turns L dips a little then heads up to reach the summit trig point.</p>	1hr 48min, 5.55km
<p>Turn R (NE) towards "Cabo de San Antoni, beyond Montgo". Follow a path along a shoulder (no more paint markers), keep more or less along the crest, until it turns L downhill. Some sections become steep and rough. Eventually it turns R on an obvious terrace path and then emerges at a clearing beside a well, with a ruin just beyond.</p>	2hrs 13min 6.65km
<p>Ignore the track on the L and path on R. Go straight ahead to a path on the right side of the ruin, it turns R immediately and descends towards a barranco, before turning L to traverse along bancals, descending gradually. Eventually, it arrives on a terrace with a Carob tree above cultivated land. Turn R down the terraces to arrive at a turning circle beside a pylon and sub station.</p>	2hrs 27min 7.36km
<p>Ignore the surfaced road on the L. Turn R (E) onto a track, which bends R rises then bends L, (ignore side tracks), to reach another right-hand bend.</p>	2hrs 33min 7.64km
<p>Go L straight onto a path beside olive groves. It becomes a rough track and climbs up to pass the L side of more olive groves where it reverts to a rough path which soon leads to a gravel track and then to gates on the R. Descend the track towards Gata to reach a surfaced road.</p>	2hrs 40min 8.05km
<p>Turn L down the road, passing a pylon, until just before a left hand bend. Turn R onto a gravel track and in about 15m, where the way ahead reduces to a path, turn L onto a path (junction with your outward route). Descend to a ruin, turn R descend bancals, turn L ignoring a path on the R. Continue to the road. Turn R and in a few metres at a junction turn R, then immediately L onto a path (red arrow on road).</p>	2hrs 46min 8.40km
<p>Follow the path to reach villas. At the first garden wall turn sharp R onto a part hidden path, follow it passing a pylon on its right to junction with a track. Turn L and follow it back to the car park.</p>	2hrs 54min 9.30km

Remember that you use these walk guides at your own risk. Take precautions and if unsure – turn back!

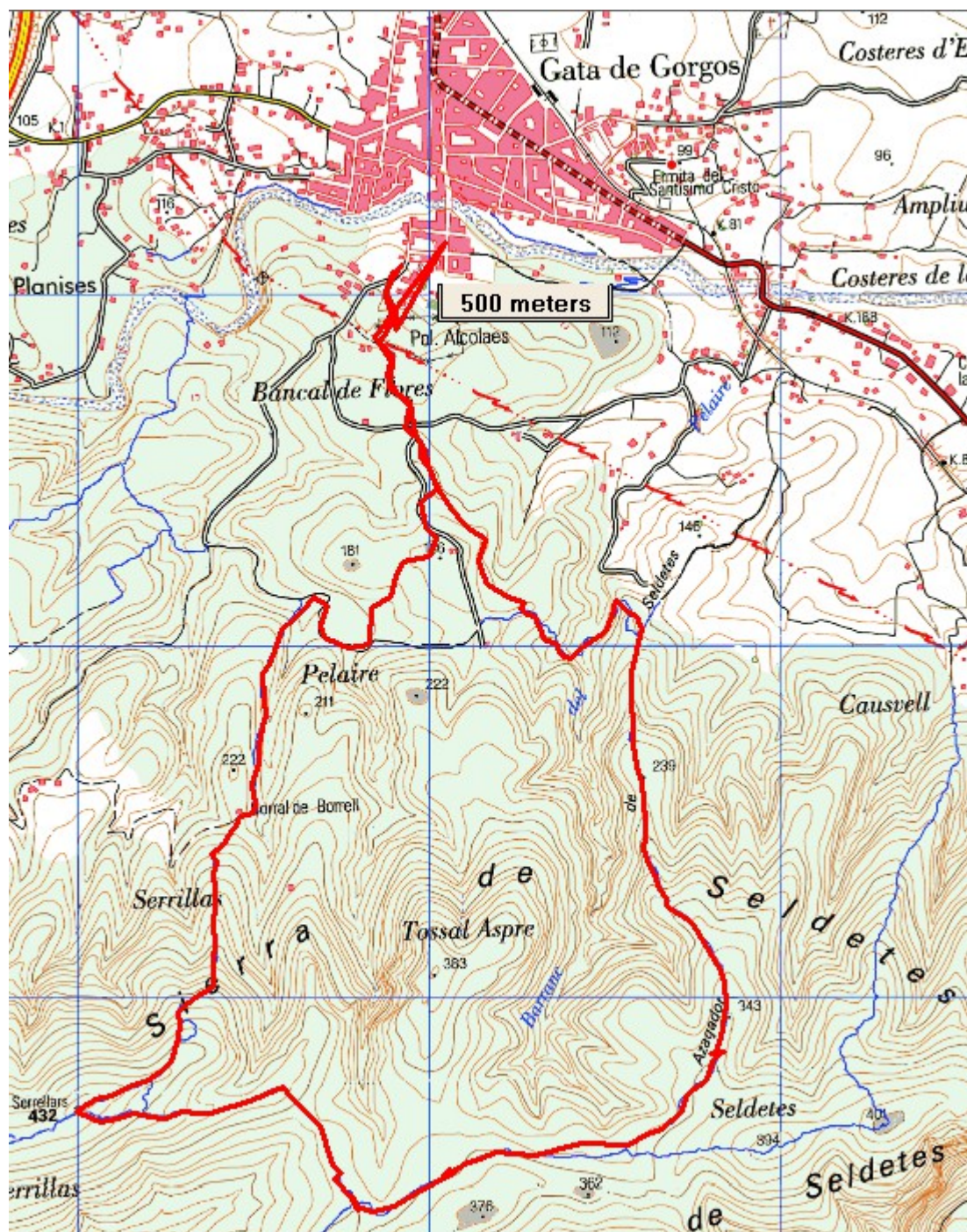
COSTA BLANCA MOUNTAIN WALKERS - WALK DESCRIPTION

Spanish maps included within these descriptions are provided courtesy of the Spanish IGN and remain © Instituto Geográfico Nacional

Walk Recommendations or restrictions

The car park might be busy on school days.

Route followed is outlined in Red



Remember that you use these walk guides at your own risk. Take precautions and if unsure – turn back!