

COSTA BLANCA MOUNTAIN WALKERS - WALK DESCRIPTION

Visit www.walksinspain.org for more walks descriptions in Spain

Walk description originally prepared by:-	Mary Gough and Ralph Phipps
Last Updated	10 th March 2016
Title of Walk	Benissa Gata circular
Location of Start (include name of nearest village/town at start of description)	Benissa, At the sub-station beyond the Cemetery near the motorway junction.
Key Statistics for walk - Distance in km	17
Key Statistics for walk - Ascent in m	820
Key Statistics for walk - Walking time and total completion time including any stops	4.75hr 6hr
Key Statistics for walk - Grade (using CBMW system)	VS/B
Grid reference of start point (if known)	Lat: 38.741170, Long 0.054474
Directions to Start	From the N332 at its junction with the AP7, take the slip road towards the motorway and before reaching the toll gates take a R turn onto a minor road that runs along side the access road - signed to the Cementeri. 650m later turn R - still signed Cementeri. 350m after this ignore the R turn to the Cementeri and continue directly ahead to arrive after a further 1.3km at a sharp LH bend by the electricity sub-station. Park here.
Short walk description	A wander around the hills between Benissa and Gata. Some lovely paths and sweeping views into the bigger mountains.
Full Walk Description	Elapsed Walking Time/Distance so far
Continue along the road descending onto concrete and then a rough track and follow this under the motorway in a tunnel.	560m, 6.5min
At the far side, turn immediately L along a terrace and at the far side climb up a few terraces to turn R along a clear footpath.	
Where this is lost under vegetation clamber up across rocks on the clear line to join a junction with the original track where you turn R.	750m, 10min

Remember that you use these walk guides at your own risk. Take precautions and if unsure – turn back!

COSTA BLANCA MOUNTAIN WALKERS - WALK DESCRIPTION

Walk into a barranco and at the far side of this turn steeply up to the L across rough ground.	1.1km, 16min
Keep L on this to find a continuation of a mozarabic path continuing up and steadily becoming clearer as you get great views across a barranco on your LHS and across to an array of terraces.	
Reach a broad track and turn R.....	1.7km, 29min
soon leaving it by continuing ahead on a secondary track aiming for a ruin.	
Pass the ruin on its RHS and continue on a footpath and after only a few metres swing sharply L still on a clear path.	
Walk around a terrace aiming L and continue now on a very clear footpath.	
Continue over the ridge and soon steeply down aiming towards the motorway and soon going lower than the carriageway to arrive at a tunnel under it.	3.9km, 1hr 6min
Here turn L along a barranco littered with various waste to reach an indistinct path crossing you where you turn L following cairns up bancales.	4.3km, 1hr 12min
Take care to turn R along a terrace at one stage to find the best line.	
As you go over the shoulder of the hill there are several R and L turns before you descend beside cleared terraces finally turning R along a clear terrace and walking almost level for a while.	
Turn L just before a couple of blockwork buildings.....	5.1km, 1hr 26min
and onto a track which you descend until a bend where you continue ahead down a couple of terraces before turning L along a clear line.	
Follow this down through bancales to arrive in front of a small casita – Les Negres – where you turn R down a concrete track.	5.3km, 1hr 30min
Continue ahead at a junction and then as the track bends to the R turn back L around a stone well structure and across a level terrace and past a concrete dew pond where you ascend one terrace and turn R.	
Walk onto a mozarabic path which is now descending towards the foot of some crags.	
Pass these and walk through the barranco ahead for a few metres before exiting onto a path on the LHS to find yourself soon walking between 2 walls.	6.5km 1hr 47min
As the motorway viaduct comes into view we swing briefly to the R and then double back L to join tarmac and continue directly ahead on this (L).	7.6km, 2hr
Stay on the RHS of the road and some 50m ahead, just past the 3km sign look out for a descending broad path on the RHS doubling back.	
Take this and soon turn L and keep on the higher terrace as this descends to find yourself walking above the level of the barranco on your RHS.	

Remember that you use these walk guides at your own risk. Take precautions and if unsure – turn back!

COSTA BLANCA MOUNTAIN WALKERS - WALK DESCRIPTION

When the terrace ahead is blocked drop down one terrace and continue in the same direction soon passing under the viaduct briefly joining a concrete track and at a bend leaving this on a rising footpath.	8.1km, 2hr 7min
At the top of the rise there is a vague intersection with another path and you keep half L and soon snake around to the L on a clearer line.	
Drop down to cross a barranco in front of some impressive coloured crags and at the far side of the barranco turn L to follow the line of the barranco.	8.5km, 2hr 12min
Continue up this as best you can watching for a cairn marking a point where you can leave the barranco bed on the LHS for easier going.	
Intersect a track crossing your line with Y/W markers and turn R to follow it.	9.2km, 2hr 24min
Follow this uphill in zig-zags until you reach a Y junction where you turn L.	9.7km, 2hr 32min
Work out L on the flank of the hill to a T-jnc where you turn R still ascending.	
Reach a half roofed casita and turn R on a track.	10.4km, 2hr 42min
About 250m later look out for a footpath descending on the LHS through trees.	
Follow this down until you crop down with difficulty onto a clear terrace where you turn R along the terrace.	
Walk around the head of a barranco to ascend a track to a junction where you turn L in front of an orange coloured house.	
Cross a tarmac road	11.1km, 2hr 53min
to continue ahead soon drifting L up bancales to intersect a better path which you follow uphill.	
Stagger up the hill eventually passing a junction with a path descending to the L	12.1km, 3hr 13min
and soon a further junction where we turn L up towards the summit.	
At a cairn on the first summit turn L along the ridge line towards a second slightly higher summit.	12.3km, 3hr 18min
Reach the trig point and turn R with Y/W markers and down hill.	
Follow this across a shallow barranco and thread through 2 ruins following the clear path to arrive at a finger post – PR CV 388 – turn R towards Benissa.	13.7km, 3hr 40min
The path broadens into a gravel track and then concrete and at a cross roads turn R.....	14.7km, 3hr 53min
soon leaving this before a gate along a descending footpath which quickly turns back to the L.	

Remember that you use these walk guides at your own risk. Take precautions and if unsure – turn back!

COSTA BLANCA MOUNTAIN WALKERS - WALK DESCRIPTION

Reach a track and turn up for a few metres and then R at a large tree and away from some gates.

Before you reach the tarmac turn R along a footpath and this becomes a track further on and at a junction turn L and immediately R on a rough footpath.

Pass a well on your RHS and soon turn R now ignoring side turnings descending steadily in zig-zags.

After dropping down for some time through woodland you reach a junction where you turn L

Now at a fork keep R and then swing gently L to reach the tarmac where you turn R to your parked cars.

15.7km, 4hr 6min

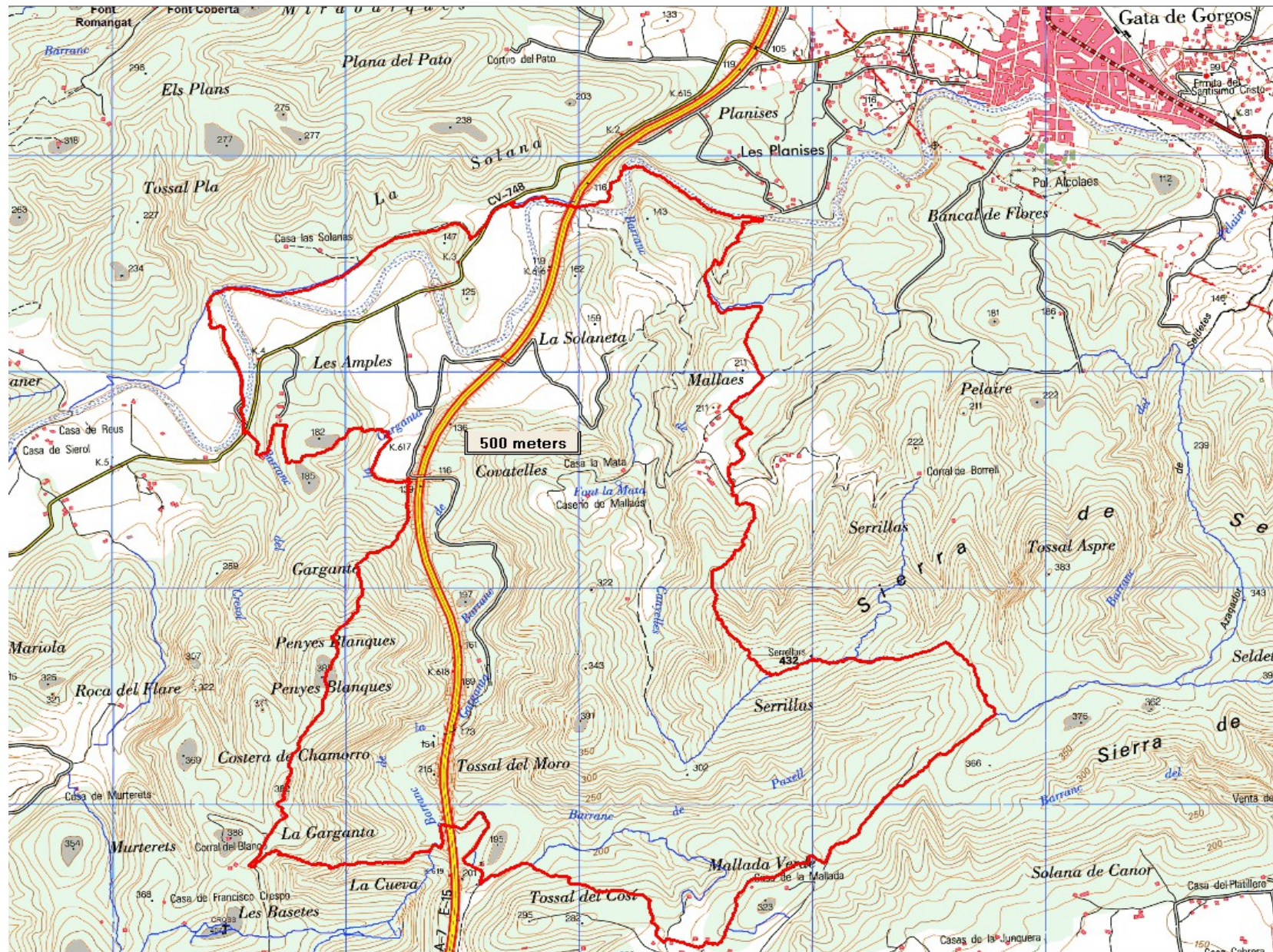
16.5km, 4hr 20min

Walk Recommendations or restrictions

Tricky navigation. Best to follow the gps track.

Remember that you use these walk guides at your own risk. Take precautions and if unsure – turn back!

Route followed is outlined in Red



Remember that you use these walk guides at your own risk. Take precautions and if unsure – turn back!