

COSTA BLANCA MOUNTAIN WALKERS - WALK DESCRIPTION

Visit www.walksinspain.org for more walks descriptions in Spain

Walk description originally prepared by:-	Brian Sear
Last Updated	25 November 2017
Title of Walk	Montgo to Denia Cross circuit from Los Lagos
Location of Start (include name of nearest village/town at start of description)	Jesus Pobre..Los Lagos. km 6 on CV735 between La Xara (near Denia) and Javea. Turn into Los Lagos, then immediately left and park.
Key Statistics for walk - Distance in km	9.9km
Key Statistics for walk - Ascent in m	630m
Key Statistics for walk - Walking time and total completion time including any stops	3hr18min 5hr
Key Statistics for walk - Grade (using CBMW system)	S/B
Grid reference of start point (if known)	Lat: 38.801992,Long: 0.094628
Directions to Start	At Km 6 on CV735 between La Xara (near Denia) and Javea. Turn into Los Lagos, then immediately left and park.
Short walk description	A gentle ascent for 20 minutes through the wooded area behind Los Largos before reaching the gully. The gully is a steep climb of about 1 hour with sections of loose stones and a couple of short rock scrambles with no exposure. Once at the top the walk continues with a gentle climb on good but rocky tracks. The final ascent becomes a little steeper on a very rocky path of the "pointy type" often experienced in this area. So sticks are a help. Spectacular views from the cross towards both Javea and Denia. Cameras a must. Note this walk is very weather dependent as Montgó often has a "hat" even when the weather is good elsewhere. The walk may need to be modified if this is the case to miss the final ascent to the top.
Full Walk Description	Elapsed Walking Time/Distance so far
From the parking go up the road and follow the road round to the R past the electric station tower and then past the houses on your R. At the end of the road turn R and after 20m turn L along an unpaved road.	3min/235m

Remember that you use these walk guides at your own risk. Take precautions and if unsure – turn back!

COSTA BLANCA MOUNTAIN WALKERS - WALK DESCRIPTION

Go to the T junction at the end and turn L up a track.	5min/400m
The track shortly ends after 50m and turns into a path. Go around the Green and Yellow barrier and follow the path into the trees. The path follows the line of a fence on your L. After 700m you reach a track junction where you need to turn R. If you miss the junction, you will reach a paved path which means you have gone 20m too far. Turn around and find the path.	14min/1.1km
You now follow this path for 1.4km, initially in open ground but slowly the vegetation increases and you enter the gulley and the path starts to get steeper. As you reach what appears to be the end, you dip under a tree and you need to spot a small cairn on your R. The path now heads backwards and up.	43min/2.5km
Follow the obvious steep path up marked with yellow spots on the rocks. You may have to scramble up a couple of the rocks if your legs are a little short! The path eventually start to flatten as you reach more open ground with low vegetation. Continue up the path until you reach a path junction and a small cairn.	1hr/3.1km
Take note of this junction as you will be returning to this point from the Denia Cross. The route home is L but you now need to turn R up to the Denia Cross which you can see up ahead. The cross will shortly go out of view and will not be seen again until you almost reach the top. Turn R and proceed along the path for 700m. You are now looking out for a bush on your R with a red arrow pointing straight ahead. At this point you need to look L and spot the two obvious cairns and also the ↑ symbols in red on a rock.	1hr15min/3.8km
Turn L and go steeply up the hill being careful to follow the obvious path. If you miss it it doesn't really matter for as long as you head up you will spot the cross ahead of you and eventually you will reach it.	1hr28min/4.2km
Take some time to pick out the various sights around and whilst this is not the highest point, the views are still amazing.	
Retrace your steps down to the main Montgo path below and turn R	1hr35min/4.5km
Head back to the path junction where you came up from the gulley. At this point pick out the lone tree on the hillside ahead and take the path to the R which takes you to the tree and beyond.	1hr54min/5.2km
You now have a steady descent along the edge of the Montgo for a couple of Kms before the path enters a 'rock cutting' and descends through a couple of zig zags. Look to your L as you go down to spot the obvious cave 'Cova Ampla'.	2hr40min/7.7km
The path is now a lot wider and eventually turns into a paved path/track. Shortly after becoming paved you spot a water deposito on your L for Fire Fighting.	3hr/8.7km

Remember that you use these walk guides at your own risk. Take precautions and if unsure – turn back!

COSTA BLANCA MOUNTAIN WALKERS - WALK DESCRIPTION

200m past the water deposito look out for a sign on your L, signing Jesus Pobre (down) and Cim de Montgo (up). Turn L

3hr2min/8.9km

After a few meters you meet the path junction which took you to the gully. Keep R and follow the path through the wood to the houses and now retrace your route back to the cars.

3hr18min/9.9km

Spanish maps included within these descriptions are provided courtesy of the Spanish IGN and remain © Instituto Geográfico Nacional

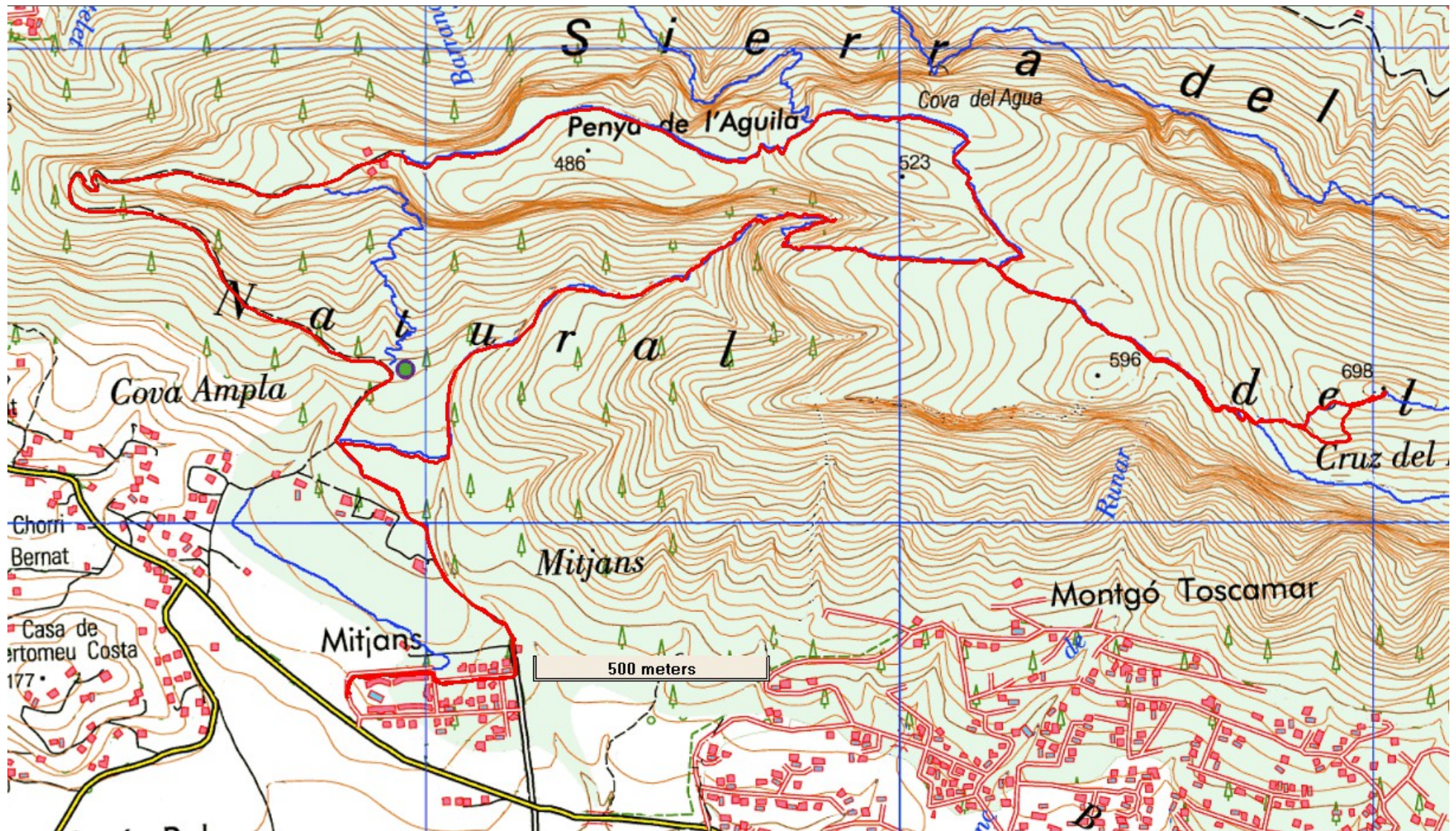
Walk Recommendations or restrictions

The walk is steep in the gully and is mainly on rough sharp and uneven stones. Don't be fooled by the 10km distance!

See map below.....

Remember that you use these walk guides at your own risk. Take precautions and if unsure – turn back!

Route followed is outlined in Red



Remember that you use these walk guides at your own risk. Take precautions and if unsure – turn back!