

COSTA BLANCA MOUNTAIN WALKERS - WALK DESCRIPTION

Visit www.walksinspain.org for more walks descriptions in Spain

Walk description originally prepared by:-	Mary Gough
Last Updated	18 th .Nov. 2017
Title of Walk	Tarbena Algar valley circuit
Location of Start (include name of nearest village/town at start of description)	Tarbena Village car park.
Key Statistics for walk - Distance in km	19.5kms
Key Statistics for walk - Ascent in m	1030 mtrs.
Key Statistics for walk - Walking time and total completion time including any stops	5hr 15min 6 hr. 40 mins
Key Statistics for walk - Grade (using CBMW system)	VS/C/X
Grid reference of start point (if known)	Lat: 38.695027, Long. - 0.103789
Directions to Start	From CV715 Tarbena / Parcent road turn into car park near childrens play area in Tarbena
Short walk description	A beautiful and scenic walk through some of the Algar valley, ascend up to the Carrascal Parcent ridge and enjoy the impressive views and mozz/arabic path on the return.
Full Walk Description	Elapsed Walking Time/Distance so far
From car park walk L and out to join CV715 and turn down R, pass a bar and turn L up a surfaced cami – continue upwards and as levelling off turn R (signed restaurant Ca's Pelat) follow this and after the last house trend R on to a well walked path	515mtr. 14 mins
After 2/3m drop R onto a feint path and turn L along some old terraces, almost immediately see large cairn to climb L up a wall onto next terrace and turn R and onto a clearer path which crosses the next terrace and rises slightly at far L corner, this loops over then spirals down old terraces then aims L across to reach a ruin.	800mtr.25 mins.
Walk to edge of terrace directly in front of ruin and descend down wall (cat) steps, turn L across this terrace and pass behind an abandoned house, emerge at far side and turn L onto a concrete track.	988 mtrs.
Soon after join a concrete road	1.23km.30 mins

Remember that you use these walk guides at your own risk. Take precautions and if unsure – turn back!

COSTA BLANCA MOUNTAIN WALKERS - WALK DESCRIPTION

Turn L and continue up and follow onto a mozarabic path – which winds up L (orange paint marks) then R on passing a house with large wooden entry gates to reach a stone tower.	1.65km.40mins
Take the R fork (cairn) and go directly forward onto a narrow path leading down terraces, soon after ignore a path to L and continue down, nearing the bottom aim across (cairn) and pass to LHS of an ivy clad wall.	1.82km. 50Mins.
Walk through a nispero/cherry terrace to far end and start to wind R (cairn) and downwards on an old feint path, reach the bottom near a well renovated finca with pool.	2km. 58 mins
Turn R along the concrete drive to reach a junction	2.7km. 1 hr.
Take L fork and start to wind downhill, follow this semi surfaced track ignoring any L turns to meet a rough track dropping down R.	3.1km.1hr 16min
Turn down R and nearing the bottom wind L towards horse corrals, at far end of corral turn R to continue on track down and take R fork downwards to reach a house with a conical roof.	4km. 1 hr 27min
Turn L behind house and follow a track through the valley bottom crossing a riverbed, soon after on a RH bend	4.3km.1hr 31min
Turn L (cairn) onto a feint path which winds through an abandoned terrace and onto a clearer path which broadens below terraces; as terraces end turn up R (cairn on wall)	4.76km 1hr39min
Wind up and pass a ruin and emerge to a track which lead up to join tarmac.	5.02km 1hr44min
Turn L and cross road and almost immediately turn R up a track, continue along with terraces to LHS and forest at RHS, a few metres through forest then reach more terraces, follow across (ignore L fork through metal gate) to far end and turn up L, wind up RHS of terraces onto a feint path which rises up more terraces then reaches a track turning R on RHS of a pine forest – follow this to meet tarmac.	5.8km. 2Hrs
Turn L and cross road to GR post, turn R and upwards to pass ruins -ignore a L fork and follow (red/white +cairn) this track to reach concrete block burner (green/blue arrows) and join an old concrete track.	6.41km 2hr19m
Continue along to join tarmac	7km 2hr27min
Turn R and then 50m along the tarmac road turn L up a concrete road and continue to pass a stone picnic area.	7.65km2hr37min
Soon after concrete turns into unsurfaced track, ignore a L fork, slowly wind upwards then level off and pass a ruin with a well, the path narrows and soon after (large cairn) turn R through a wall and start to work upwards on animal/hunters paths, spiral up aiming up to L of largest crag on ridge.	9.56km 3hr15min
Turn L along ridge to reach a large hollyoak near a well trodden animal plateau, turn L off this plateau through a scrubby /grassy area and start to wind down a rocky path aiming to grassy terraces below.	10.2km 3hr50min
Follow path along LHS of terraces then drop towards riverbed and cross round to RHS, now wind along RHS of barranco, forwards over a small rise (optional visit to cave just on LHS)	10.6km 4hr20m

Remember that you use these walk guides at your own risk. Take precautions and if unsure – turn back!

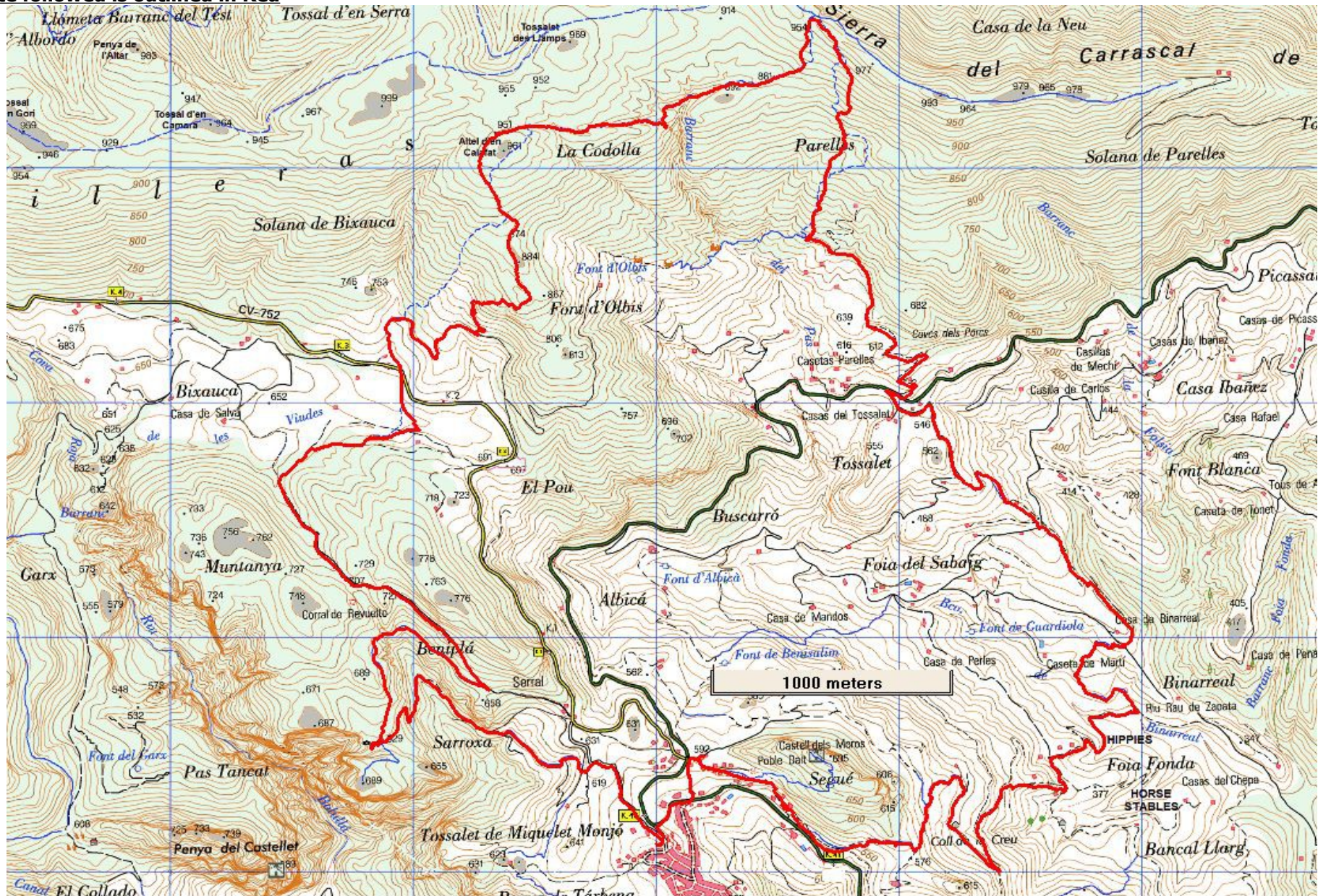
COSTA BLANCA MOUNTAIN WALKERS - WALK DESCRIPTION

Turn R to follow path through terraces up a gully, ignore R forks leading to ridge top, path trends L and continues forwards to level off at the head of a barranco on a grassy area.	11.4km4hr40m
Turn L (cairn) through a rocky area, follow this faint path across rocks on LHS of gully, the path trends further L (cairns) and over the ridge to drop down and reach a ruin	12km 4hr 50m
Turn R below ruin alongside a mesh fence, soon after work L (cairn) and across a small ridge, the path (cairns) slopes down and along LHS of an old wall to reach a R turn (cairn) follow this freshly (2017) cut winding path down to a casita.	12.7km 5hr
Turn down below casita on drive to join a concrete track, soon after join tarmac and follow to a R fork.....	13.1km5hr10
Turn R down unsurfaced track to reach a very large boulder.	
Now spiral down terraces and wind L on path to meet a track, turn R and continue down to a goat farm then join tarmac.	13.7km5hr20min
Turn L and cross road and drop onto track at RHS, follow down and cross a dry riverbed, wind up alongside terraces to turn R on feint path along 4 th terrace, walk across to far end near a hollyoak and turn L up through trees to join a broad track	14.3km 5hr31min
Turn R, ignore next R fork and follow main track which turns into tarmac and undulates to reach a R turn onto a mozarabic path	16.1km 5hr50min
Turn down this path and and continue (take advantage of viewpoint into Pas de Tancat) retrace steps and continue on engineered path (yellow paint) to meet a concrete road,	17.3km 18.1km 6hr12min
Ignore R fork and soon after reach a small junction (cairn)	18.2km
Take R fork aiming across to a ruin, then take L fork (cairn) soon after take R fork (old red dot and turquoise/yellow paint) pass the ruin and stay on marked path, rise up some 'rustic' steps to join tarmac	18.8km6hr38min
Turn L then ignore a L fork and follow tarmac back to car park	19.5km6hr45min
<small>Spanish maps included within these descriptions are provided courtesy of the Spanish IGN and remain © Instituto Geográfico Nacional</small>	
Walk Recommendations or restrictions	Demanding day partly across open mountain side.

See map below.....

Remember that you use these walk guides at your own risk. Take precautions and if unsure – turn back!

Route followed is outlined in Red



Remember that you use these walk guides at your own risk. Take precautions and if unsure – turn back!