

COSTA BLANCA MOUNTAIN WALKERS - WALK DESCRIPTION

Visit www.walksinspain.org for more walks descriptions in Spain

Walk description originally prepared by:-	Mary Gough
Last Updated	4 th . Dec. 2017
Title of Walk	Penya Roc circuit and summit
Location of Start (include name of nearest village/town at start of description)	Guadalest Remote location near Hotel Trestellador.
Key Statistics for walk - Distance in km	14 Kms
Key Statistics for walk - Ascent in m	760 mtrs
Key Statistics for walk - Walking time and total completion time including any stops	4 hrs 25 mins 5 hrs. 20 mins
Key Statistics for walk - Grade (using CBMW system)	S/C/Scr/X
Grid reference of start point (if known)	Lat: 38.65651 Long: -0.19681
Directions to Start	Follow the CV70 from Benidorm towards Guadalest. At km 33.5 look out for a L turn with generous signposting to Hostal Trestellador. Take this road and after a few hundred metres take a L turn doubling back. Follow round to a RH bend and with fence on LHS look for parking on a track on RHS.
Short walk description	Enjoy some good forestry paths before reaching ' the scramble ' up a magnificent peak – 360 deg.views rewards the exertion and a downhill return
Full Walk Description	Elapsed Walking Time/Distance so far
Walk up the track where you have parked curving around to the L and continue onto a path leading forwards , after 200 mtrs. Turn L up a path which soon joins a track to turn L and start to ascend , level off then drop down to a crossroads.	1.33km 18mins
Go directly across and undulate along this track ,ignore a track going R below terraces.	1.7km.27min
Soon after ignore a L fork and continue on main track to reach a rocky 'gateway'.	2.6kms 44mins
Within minutes, 100mtrs ,turn L (cairn on an old track which narrows (cairns and leads round and drops down to a cultivated terrace.	3 km. 50Mins
Skirt round the RHS of this terrace/field and onto a track , follow up track to reach a	

Remember that you use these walk guides at your own risk. Take precautions and if unsure – turn back!

COSTA BLANCA MOUNTAIN WALKERS - WALK DESCRIPTION

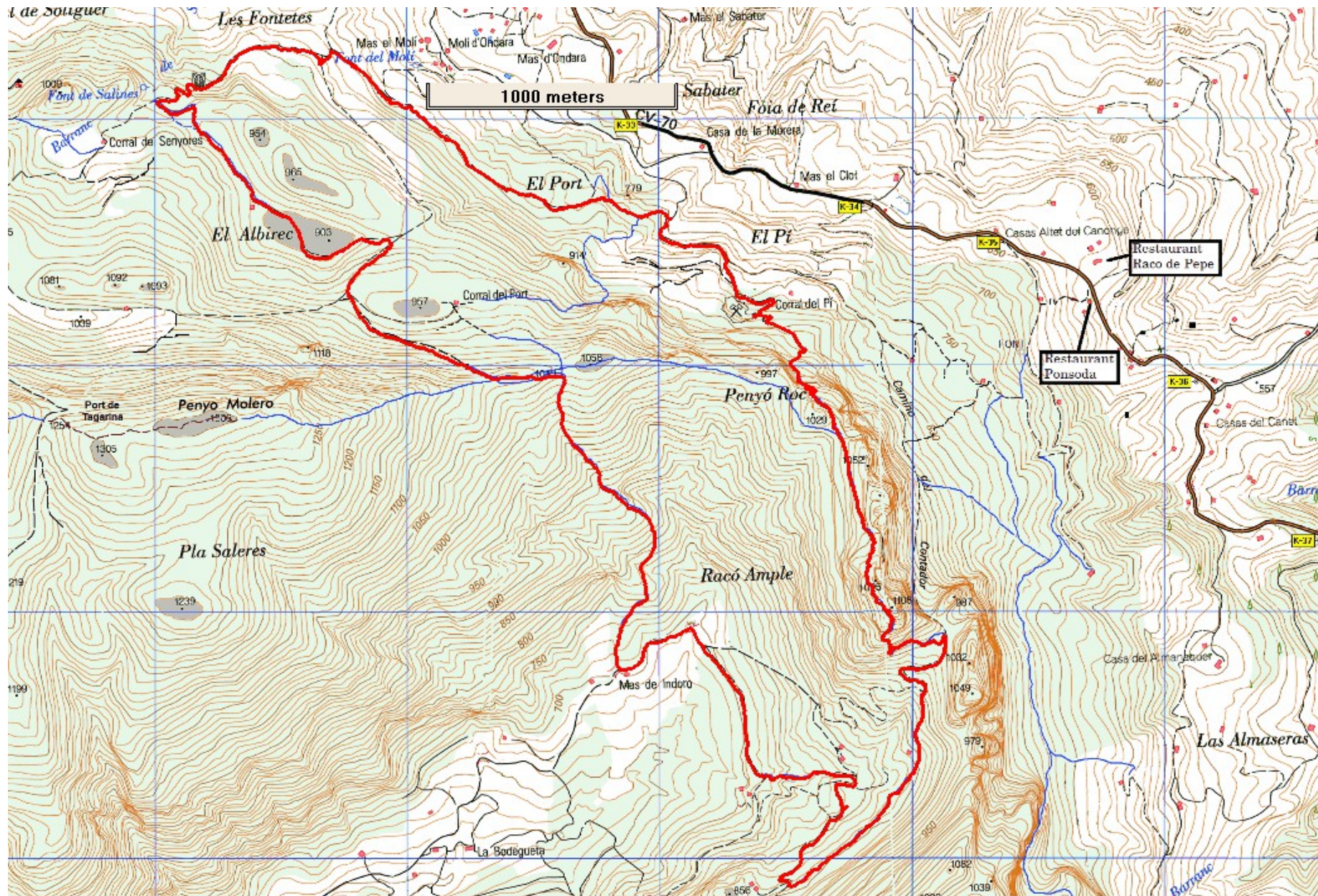
small level grassy area.	4.07km1hr4min
Turn R across the corner and join a track to turn R ,continue to reach a T junction.	4.36km1hr11min
Take L fork (cairn) then almost immediately take R fork leading along RHS of a fenced terrace ,follow up RHS of terraces to end of top one.	4.91km1hr19min
Turn R (cairn) up a feint path which leads L and upwards to cross a small scree section and reaches the ridge.	5.09k1hr23min
Turn L and follow a path along the RHS of ridge to reach a junction (prominent cairn).	5.35km
Turn R down a rocky path ,continue down (ignoring a R fork levelling off near some trees take any of several paths which lead out to a broad track.	6.81km2hr8min
Turn L and reach a junction.	7.25km2hr14min
Take R fork (blue paint on rock), follow this track until just before track dips.	7.85km2hr22min
Turn L up a narrow path(cairn), as the path widens wind upwards ,pass to RHS of a casita and allotment ,continue R but soon after take L fork and wind along to other side of small valley to reach a junction in front of a farmhouse.	9.01km2hr40min
Take L fork and then immediately turn L up a path (cairn) on RHS bank continue until reaching a track.	10.1km2hr55min
Turn R and continue up to the col with signpost.	10.6km3hr5min
On level of col turn L on a feint path leading along RHS base of 'Penya Roc ' wind along this intermittent (few cairns) cross a scree section,pass above a hollyoak ,through a scrub area, pass to RHS of small gully then look for red dots on RHS rockface.	10.7km
Start to scramble R up through a 'red paint spot ' marked route to reach the summit.	11.1km3hr43min
Retrace steps down from summit for 2 mtrs then continue forwards on an intermittent, winding path (few cairns just below LHS of ridge ,the path becomes more obvious and reaches a dip just before an upright concave crag.	12km4hr36min
Drop R (cairn) off ridge ,start to work forwards,keep a level line at at first then cross a small scree area ,drop below some bushes and back onto scree ,just before a rocky outcrop start to drop again ,work forwards and downwards(cairns) on scree and across to far side ,turn back on ourselves and downwards to reach a fruit terrace at RHS.	12.5km 5hrs
Turn L and across to far RHS corner and onto a track ,follow this to reach another terrace.	12.8km5hr10min
Turn R and follow round to join a track which trends L and within 2 mins.reach a junction, turn L ,stay on main track ,ignore a L fork (red/blue mark).	13.1km
Reach tarmac. Turn L and return to cars.	13.3km
<small>Spanish maps included within these descriptions are provided courtesy of the Spanish IGN and remain © Instituto Geográfico Nacional</small>	

Walk Recommendations or restrictions

An ability for hand scrambling

Remember that you use these walk guides at your own risk. Take precautions and if unsure – turn back!

Route followed is outlined in Red



Remember that you use these walk guides at your own risk. Take precautions and if unsure – turn back!