

## **COSTA BLANCA MOUNTAIN WALKERS - WALK DESCRIPTION**

Visit [www.walksinSpain.org](http://www.walksinSpain.org) for more walks descriptions in Spain

<b>Walk description originally prepared by:-</b>	David Harbach, CBMW Nov. 2017	
<b>Last Updated</b>		
<b>Title of Walk</b>	Segaria western end from Monte Pego - extended	
<b>Location of Start (include name of nearest village/town at start of description)</b>	Monte Pego urbanisation. Nearest town El Verger. (also spelt Vergel)	
<b>Key Statistics for walk - Distance in km</b>	11.4	
<b>Key Statistics for walk - Ascent in m</b>	525m	
<b>Key Statistics for walk - Walking time and total completion time including any stops</b>	3hr17mins 4hr45mins	
<b>Key Statistics for walk - Grade (using CBMW system)</b>	MS/B	
<b>Grid reference of start point (if known)</b>	Lat: 38.851133, Long -0.040764	
<b>Directions to Start</b>	From the N332 take the CV700 in the direction of Pego. After approx 4 km turn L signed Monte Pego, then L again. (this turning is approx. 80m past the exit from Monte Pego which some find confusing!). Park in the first car park on the L just after the entrance to the urbanisation (restaurant on the R) The walk begins at the top of Monte Pego so we car share and drive up	
<b>Short walk description</b>	From the top of Monte Pego we walk to the ridge of Segaria where there is evidence of an Iberian settlement. We then drop down and around the western end of the mountain into Benimeli. We then return back to the ridge and retrace our steps back to the cars. All on well defined paths, tracks and quiet country roads. The shorter legged of our species may need a helping hand on occasion.	
<b>Full Walk Description</b>		<b>Elapsed Walking Time/Distance so far</b>
<p>From the car park go L and up you go on Avenido Rafol. Continue up this road, ignoring all roads joining on either side until you reach a col towards the top of the urbanisation. Here several roads converge. Take the second L into Calle Benimeli and continue up, ignoring any other roads that join, past a water deposito on your RHS, to the top where you turn R, which is still Calle Benimeli, and park.</p> <p>Those that wish to walk from the car park also follow the above. There and back will add 4.45km, 55mins and 225m ascent to the walk.</p>		

**Remember that you use these walk guides at your own risk. Take precautions and if unsure – turn back!**

## **COSTA BLANCA MOUNTAIN WALKERS - WALK DESCRIPTION**

Walk down the road towards the mountain to where the road bears to the L. Go R onto a track that joins here and past a house on your LHS. The track becomes a path a short distance past the house which you follow to a T junction. (4mins, 320m)	4mins, 0.32km
Turn L here. From here to a country road your route is part track and part path. When you arrive at the road go L. (10mins, 0.67km)	14mins, 0.99km
Continue on this road to it's end at "Fuente Catala" ignoring a road the joins on your RHS (km1.3) and two others on your LHS. Here there is a picnic area. (14mins, 1.08km)	28mins, 2.07km
Turn R here up a concrete surfaced track then, after approx 20m, go R up a non – surfaced track/path to a T junction (km2.13) and go R up a Y/W marked path. Continue past a signpost (at the time of writing) signed "Poblat Iberic 1.17km" and up to a T junction. (7mins, 0.33km)	35mins, 2.4km
Go R here to another T junction under a cliff and again go R. (8mins, 0.29km)	43mins, 2.69km
At yet another T junction go R again (getting boring this!) and on up to the col. (10mins, 0.36km)	53mins, 3.05km
Continue on Y/W and G/W marked path along the ridge heading for the masts, bear R around the masts then down the access road to the col/mirador and picnic area. (10mins, 0.53km)	1hr3mins, 3.58k
Bear R and down the road you go. Approx 70m after passing a house on your RHS the road bears to the R and a path joins on your LHS signed (at the time of writing) "Benimeli 2.18km" (13mins, 1.03km)	1hr16min,4.61km
Take this G/W path and continue to where it joins a track. (8mins, 0.48km)	1hr24min,5.09km
Turn L onto this track and continue to its end. (10mins, 0.73km)	1hr34min,5.82km
Take the G/W path that goes straight on at the end of the track. After a short distance go over a concrete pipe turn R then, after 5m, go L and continue to the edge of Benimeli. (18mins, 0.77km)	1hr52min,6.59km
Turn L onto a concrete surfaced road and continue to the church square (4mins, 0.25km)	1hr56min,6.84km
Cross the square with the Bar on your L and the Church on your right and leave from the LH corner. Cross the road and proceed down the road opposite. Continue to where the road bears R (enclosed well on the LHS). Go round the bend and after approx 10m turn L up some steps. Continue going up, marked G/W, following the stations of the cross. Turn L just after station VII up more steps to a path. (3mins, 0.24km)	1hr59min,7.08km
Go L onto this G/W path and up you go to the col. Continue across the col to the other side to a signpost (at time of writing) (21mins, 0.95km)	
We go L here signed "Mirador de Segaria 0.50km" and up we go on the Y/W and G/W marked path to the top. (18mins, 0.61km)	2hr20min,8.03km
Go L and down the road to a T junction. (19mins, 1.46km)	2hr38min,8.64km
Go L and back the way you came earlier. Pass the bins on your LHS, round a RH bend	2hr57min,10.1km

**Remember that you use these walk guides at your own risk. Take precautions and if unsure – turn back!**

## **COSTA BLANCA MOUNTAIN WALKERS - WALK DESCRIPTION**

and down to where a track joins on your RHS with a small building on the corner.  
(4mins, 0.30km)

Turn R onto this track that soon becomes part path and part track, R at the T junction,  
past the house now on your RHS, L onto the road and back to the cars. (16mins, 1.0km)

3hr1min,10.4km

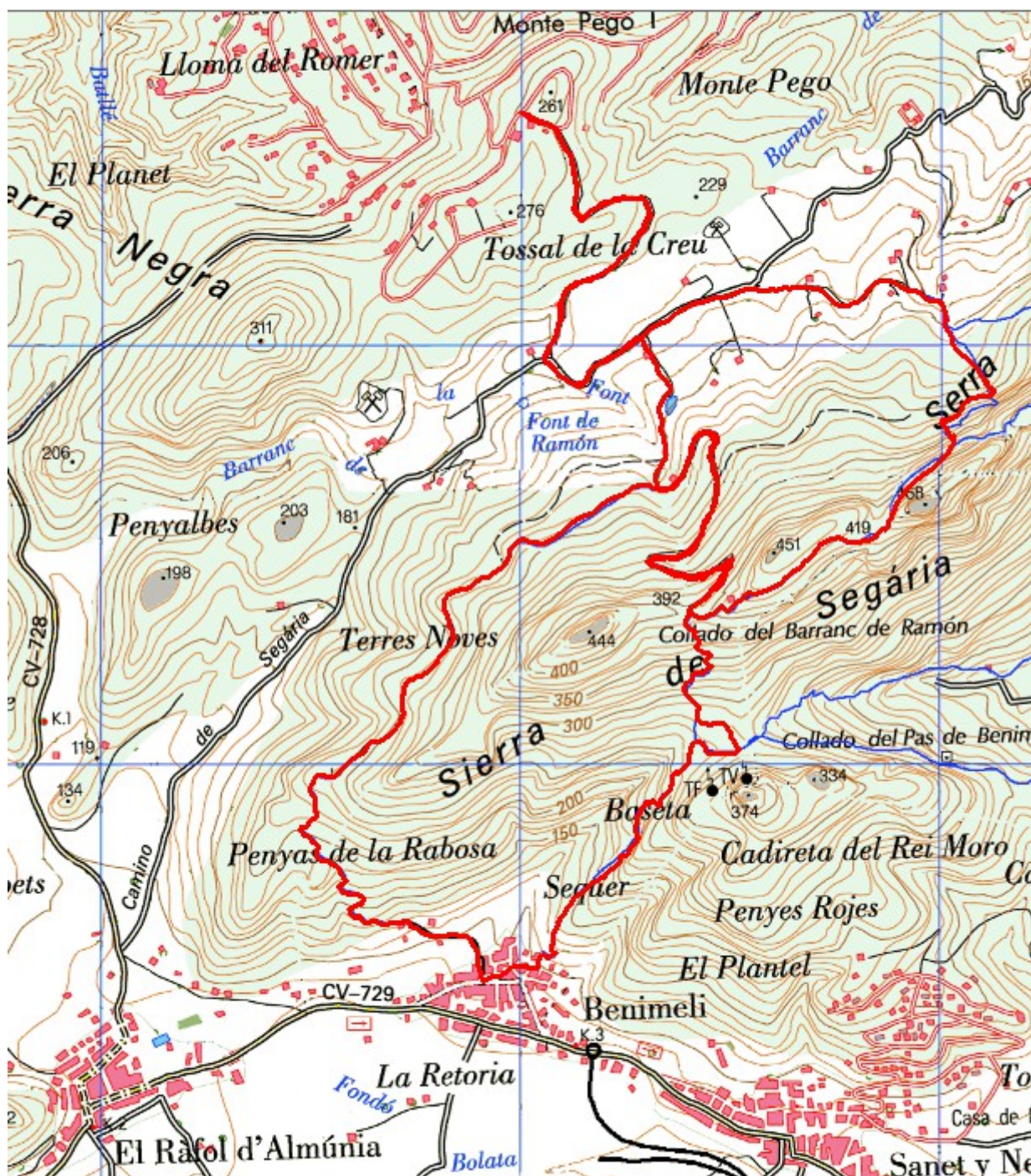
3hr17min,11.4km

Spanish maps included within these descriptions are provided courtesy of the Spanish IGN and remain © Instituto Geográfico Nacional

**Walk Recommendations or restrictions**

None

**Route followed is outlined in Red**



**Remember that you use these walk guides at your own risk. Take precautions and if unsure – turn back!**