

## **COSTA BLANCA MOUNTAIN WALKERS - WALK DESCRIPTION**

Visit [www.walksinspain.org](http://www.walksinspain.org) for more walks descriptions in Spain

<b>Walk description originally prepared by:-</b>	Ralph Phipps
<b>Last Updated</b>	10 <sup>th</sup> October 2007
<b>Title of Walk</b>	Circuit of Rio Canaleta <b>(needs verification)</b>
<b>Location of Start (include name of nearest village/town at start of description)</b>	Horta de San Juan Ruins of Mas de les Eres
<b>Key Statistics for walk - Distance in km</b>	13.5
<b>Key Statistics for walk - Ascent in m</b>	635
<b>Key Statistics for walk - Walking time and total completion time including any stops</b>	3.25hr 5hr
<b>Key Statistics for walk - Grade (using CBMW system)</b>	S/B/X
<b>Grid reference of start point (if known)</b>	Lat: 40.900917, Long: 0.315724 (lower parking)
<b>Directions to Start</b>	The T333 road runs along the northern edge of the Ports and from the junction with the minor road into the village of Horta de San Juan we turn away from this on initially on tarmac and aiming S for some 4.7km to a junction where with a suitable vehicle we can turn L and drive up to another junction where you can park. If this is not feasible then park at the first junction and walk up to this point.
<b>Short walk description</b>	A longish track walk in imposing scenery leading to a barranco crossing with some water likely particularly in the Spring or after heavy rain. The scenery is fantastic but you must be prepared to get wet. Assess at the marked point and if in doubt turn back!
<b>Full Walk Description</b>	<b>Elapsed Walking Time/Distance so far</b>
Assuming that you are starting from the "top" junction turn R and follow this track as it threads below the summit of Roques de Benet on your RHS untio you reach the summit of the Col de Membrado.	1.34 2.6km, 35min
Cross a second flatter col some 1.2km further on and continue on the main track as it weaves above the valley on your R and ignore any side tracks either dropping or climbing more steeply. Eventually arrive at the ruined Mas de les Eres, also on a col.	7.1km, 1hr 26min

**Remember that you use these walk guides at your own risk. Take precautions and if unsure – turn back!**

## **COSTA BLANCA MOUNTAIN WALKERS - WALK DESCRIPTION**

We leave the ruins to the right and follow the track that descends towards the valley of the Canaleta, presided over by the walls of the Moleta of del Camp and the Mola de las Canals, which are the two tops that we see on the right, whereas to the left and nearer is the Punta de Ganxos, pointed and covered in trees.

Ignore a secondary track to the left and follow the main track, that continues to descend in zig-sags.

After these bends we arrive in the bottom of the valley. To the right are the rest of the Mas de Espolsa needles, surrounded by abandoned bancales. Follow the track ahead parallel to the river, which lower down becomes the Rio Canaleta and shares the name of Barranco de los Estrets (not to be confused with the rio de los Estrets)

Pass the Fuente de la Carrasca, with a small picnic zone and shade and continue to follow the track.

1hr 38min

After a bend we cross the river and to the right we see a drinking trough, next to the Fuente Canaleta fitted out by Icona in 1981.

1hr 44min

Recross the river and continue descending on the track as it becomes thinner and more vegetated.

As the track rises to the left, leaving the bottom of the valley we follow it for a few meters and quickly take a barely visible footpath on the right, initially slightly obscure but further ahead easy to follow which descends back to the river down on the R.

Cross and re-cross the river several time and arrive at The Estrets of the Canaleta, - a pretty gorge through which we will be able to pass easily if there is little water. **Assess your level of contentment with the possibility of getting wet feet and even wet legs at this point before continuing ahead!**

There are a number of sumps along this stretch sometimes with water in them but of no particular technical difficulty.

Exit the gorge to more open land where there are old stone cultivated fields and walls. We cross the river to the other side. Further ahead we cross a field of almonds tree and arrive at the ruins of the Masos de Capella and Fandos and from here on our route is marked with R/W and Y/W and blue stars!!

10km, 2hr

Cross a small water course normally with little water (Estret del Boter) and continue along the pretty valley bottom. The footpath follows the left bank then recrosses to the right, rising a little. The vegetation here is abundant. Soon we find ourselves on the old dirt road that joins the towns of Alfara and Horta de Sant Joan.

Soon we can see the Collado de la Barca, which you can't get to. On the left is a pretty isolated rocky prow (the Boat), located at the confluence between the barranco Estrets and the barranco de Pique on the right. We leave the main route and we turn to left, following red paint marks that descend towards the river.

Turn to the right and cross a jumble of blocks. Follow the red marks, that lead us to the interior of a narrow gorge where the light of the sun penetrates with great difficulty. This narrow hidden stretch has the name of Pas de la Barca. (boat)

2hr 20min

Go up a little to the left to avoid the first sump.

**Remember that you use these walk guides at your own risk. Take precautions and if unsure – turn back!**

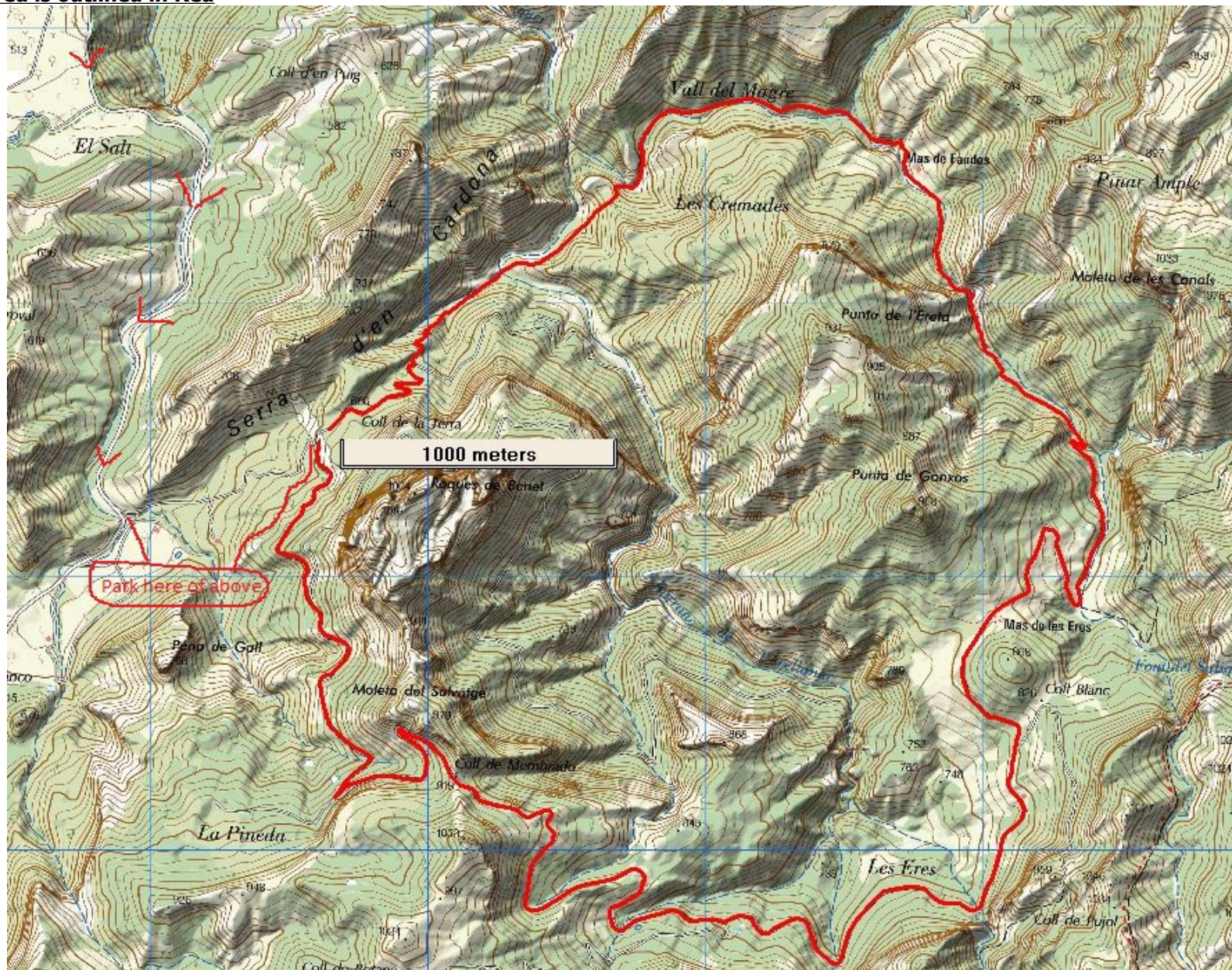
## **COSTA BLANCA MOUNTAIN WALKERS - WALK DESCRIPTION**

<p>Arrive at a second sump where we will be unavoidably soaked, although the level of the water is not above the waist!</p> <p>Once past this obstacle, we must leave the bottom of the barranco and climb left, more or less up a staircase, taking care not to lose the markers.</p> <p>Pay attention as the paint signs turns to the right. Leave the rocky terrain and walk into the woods.</p> <p>After a considerable ascent we arrive at a col, where we find a wide track, also marked well with red paint. We follow it to the right descending.</p>	2hr 26min
<p>Cross a river to the opposite flank with a slight ascent. A little way ahead we will get magnificent views of the barranco del Pique on our right. Continue descending.</p> <p>Pass some ruins on the right where ahead are the majestic Roques de Benet. To the right we see a small lateral valley, which is where we ascend. Keep following the paint signs to cross old cultivated terraces of almonds and then descend slightly.</p>	2hr 34min
<p>Cross the river Pique.</p> <p>When there are ruins to the right follow the barranco up. A few meters ahead there is barbed wire across our line.</p>	12km, 2hr 40min
<p>Cross the barranco by a bridge constructed of stone walls and rise straight upwards on a stony path. This is a tough ascent doing zig-zags with the precipice on our right.</p>	2hr 46min
<p>Reach a small rocky col with a fantastic view of the Roques de Benet above us. To the right of all the rocks we can see el Puro- a needle separated from the main wall by one narrow crack. Now the path turns right and we contour a little and cross a stream.</p> <p>Arrive at a wide track, that we follow towards the right. About 20 meters ahead we leave it and take a short cut on the right still ascending.</p> <p>Finally we return to go to the same track turn right soon passing through the Col de Terra and descend slightly to reach our parked cars.</p> <p><small>Spanish maps included within these descriptions are provided courtesy of the Spanish IGN and remain © Instituto Geográfico Nacional</small></p>	2hr 52min
<b>Walk Recommendations or restrictions</b>	Barranco could require wading when wet

**Remember that you use these walk guides at your own risk. Take precautions and if unsure – turn back!**



**Route followed is outlined in Red**



**Remember that you use these walk guides at your own risk. Take precautions and if unsure – turn back!**