

COSTA BLANCA MOUNTAIN WALKERS - WALK DESCRIPTION

Visit www.walksinSpain.org for more walks descriptions in Spain

Walk description originally prepared by:-	Pat Moss and David Harbach Feb 2018, CBMW	
Last Updated	16 th April 2018	
Title of Walk	Iberian settlement via flank of Montgo	
Location of Start (include name of nearest village/town at start of description)	Jesus Pobre	
Key Statistics for walk - Distance in km	9	
Key Statistics for walk - Ascent in m	360	
Key Statistics for walk - Walking time and total completion time including any stops	3hrs 4hrs 30mins	
Key Statistics for walk - Grade (using CBMW system)	M/B	
Grid reference of start point (if known)	Lat: 38.801992,Long: 0.094628	
Directions to Start	Turn off the CV735, Javea to Denia road, at Km 6, signed Los Lagos, into Carrer Pedra, turn immediately left and park	
Short walk description	A walk through the woods followed by a steady ascent up a broad track. We then descend westerly to reach the Iberian settlement and return on the lower flank back to the cars	
Full Walk Description		Elapsed Walking Time/Distance so far
Walk away from the main road, ignore the track that joins after a short distance on your LHS and continue past the urbanisation on your RHS to the end of the road (3mins, 225m)		3mins, 225m
Go straight onto a path, after a few metre turn L onto a track in front of a house then after another 25m turn L onto a path. Continue through the woods, ignore a path that joins on your LHS (km 0.8km) that goes down to a road and after approx another 200m go L at a fork and 20m further you join a stone surfaced wide pathway. (13mins, 825m)		16mins, 1.05km
Turn R up this pathway, past a deposito on your RHS (km1.24) and press on upwards. The paving ends approx 140m further on and you continue up to a signpost indicating up "Cim del Montgo 4.7" and down, the way you've just walked, "Jesus Pobre". (21mins, 1.04km)		37mins, 2.09km

Remember that you use these walk guides at your own risk. Take precautions and if unsure – turn back!

COSTA BLANCA MOUNTAIN WALKERS - WALK DESCRIPTION

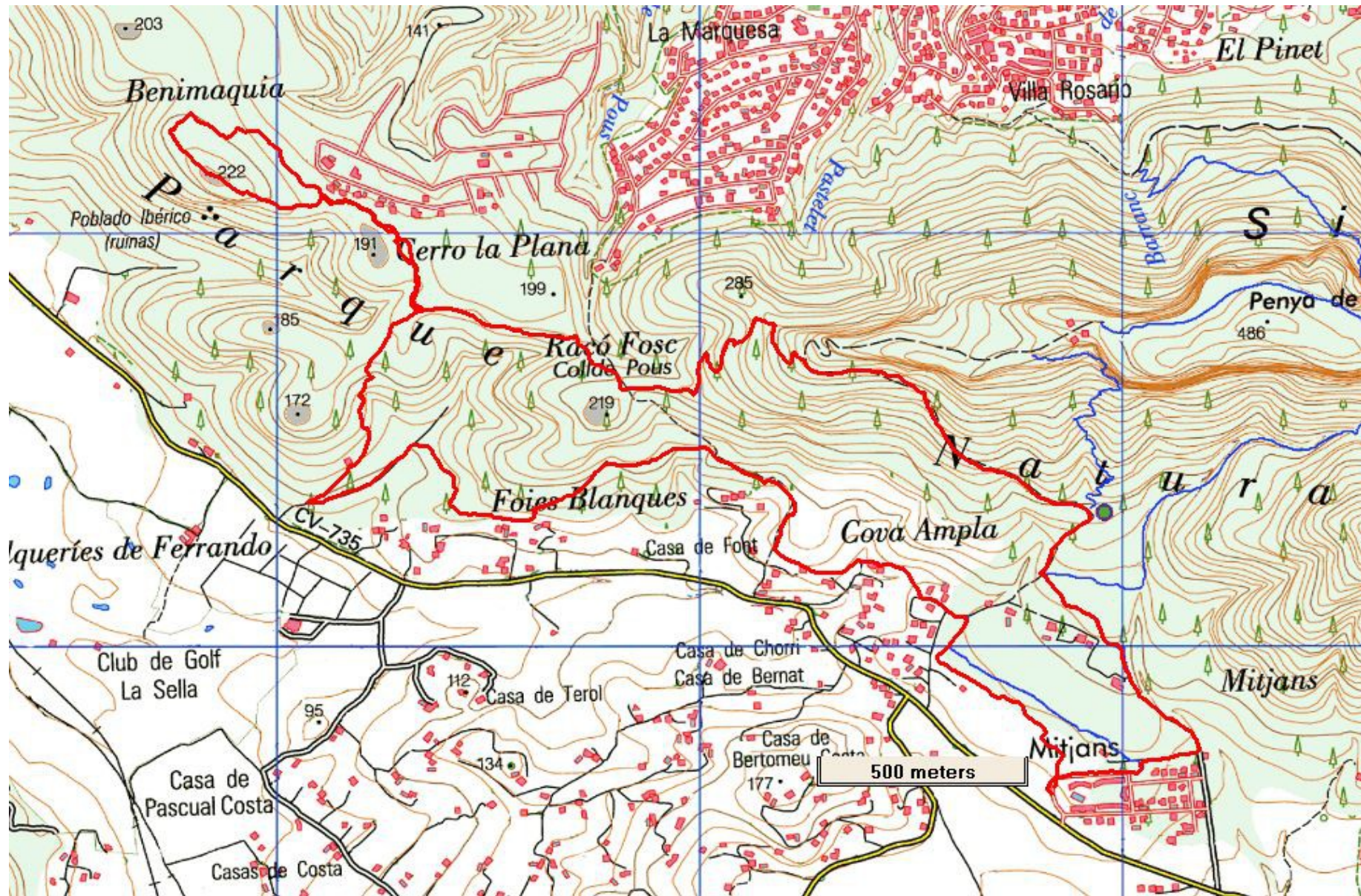
<p>A path also joins at this point on your LHS going down. Take this path down to a signpost signed "Coll de Pons". Continue down to another path and turn R.(23mins, 0.74km)</p>	<p>60mins, 2.83km</p>
<p>After a further 30m go R at a fork then bear R and down after another 30m and continue until you arrive at a large notice board giving information about birds (6mins, 0.27km)</p>	<p>1hr6min, 3.10km</p>
<p>Turn L here and continue through the trees to a sign and cross paths (6mins, 0.37km)</p>	<p>1hr12min,3.47km</p>
<p>Go straight on here and straight on again at two more signposts up to a building (km3.7) Turn R and continue past an urbanisation on your RHS. Go straight on at a X paths (km 3.97) and press on past a large cairn on your RHS. A short distance further the path turns L and up to the ridge and the Iberian settlement. (25mins, 1.17km)</p>	<p>1hr37min,4.64km</p>
<p>Continue along the ridge with a settlement wall on your LHS and then down the other side until you reach a X paths. (11mins, 0.36km)</p>	<p>1hr48min, 5km</p>
<p>Turn R here back the way you came earlier (the urbanisation is now on your LHS) back through the trees to the building referred to earlier (good spot for lunch). This time you go straight on with the front of the building on your RHS, ignoring the path on your LHS you used earlier, and continue on a path to a T junction. (7mins, 0.34km)</p>	<p>1hr55min,5.34km</p>
<p>Turn R here, straight on past a sign your RHS, and go R at a T junction going down to another T junction. (3mins, 0.22km)</p>	<p>1hr58min,5.56km</p>
<p>Turn L here. Ignore the path that joins after 10m on your RHS and another on your LHS a little further on and continue down with an hotel in view. Ignore another path on your LHS (km6), go past a covered well a few metres further on on down to a track. (14mins, 0.62km)</p>	<p>2hr12min,6.18km</p>
<p>Turn L onto this track then after approx. 300m turn R onto a path. After a further 200m go L at a T junction and ignore the path that joins after about 80m on your RHS. Continue to where the path turns sharp L near a house and up you go. Ignore a path that join on your LHS (km7.44) and another on your RHS (km7.81) and proceed down to a track. (35mins, 1.81km)</p>	<p>2hr47min,7.99km</p>
<p>Go straight on, past a house on your RHS, to a road. Continue up this road to a T junction and go L (km8.33). After approx. 50m turn R onto a path where the road turns to the L. (6mins, 0.39km)</p>	<p>2hr53min,8.38km</p>
<p>After approx. 90m go R at a T junction then after a further 30m turn L just before a road onto a path. After approx. 240m go R at a fork, past a ruin on your LHS, to a track where you go L and R back to the cars. (7mins, 0.62km)</p>	<p>3hrs, 9km</p>
<p>Spanish maps included within these descriptions are provided courtesy of the Spanish IGN and remain © Instituto Geográfico Nacional</p>	

Walk Recommendations or restrictions

None

Remember that you use these walk guides at your own risk. Take precautions and if unsure – turn back!

Route followed is outlined in red



Remember that you use these walk guides at your own risk. Take precautions and if unsure – turn back!