

COSTA BLANCA MOUNTAIN WALKERS - WALK DESCRIPTION

Visit www.walksinspain.org for more walks descriptions in Spain

Walk description originally prepared by:-	Colin Read
Last Updated	30th April 2018
Title of Walk	Sella, Castell & Ruta del Agua Extended
Location of Start (include name of nearest village/town at start of description)	Sella. Public car park at the south-east corner of the village.
Key Statistics for walk - Distance in km	11
Key Statistics for walk - Ascent in m	500
Key Statistics for walk - Walking time and total completion time including any stops	2.75hr 4.25hr
Key Statistics for walk - Grade (using CBMW system)	MS/B
Grid reference of start point (if known)	Lat: 38.60922, Long: -0.26919
Directions to Start	Approaching Sella by the CV-770 from the south, cross the bridge and go up to the final hairpin at the edge of the village. Turn right onto a side road to car parks (signed) on the right in about 200m. From the north, drive through the village and just as you leave it turn left onto the side road as described above, to car parks on the right.
Short walk description	Up through the village to the Castell & Ermita. Down to various fonts & water features. Via crossings of the Rio's Voltes, l'Arc & Sella. Through delightful countryside, up over a ridge via old mule trails. Mostly straightforward paths & tracks (some sort stretches a little overgrown but not scratchy) a few short sections of quiet lanes. Lots of fine & varied views. Easy for the grade!
Full Walk Description	Elapsed Walking Time/Distance so far
<p>From the lower car park turn R uphill to the 'T' junction. Turn L up "C' Secanet" and at the top of the rise take the first street on the R, up a short section of steep concrete to a 'T' junction. Turn L into "C' Sant Antoni" then first R up steps passing a font. Winding L then back R go up steps and a concrete ramp to the L then R up steps to junction with a lane. Go straight across up a steep concrete lane which ramps up leftwards to junction with the paved track of the "Calvari". Turn R uphill and after a sharp left hand bend take a track on the right which starts as concrete but soon becomes gravel. It winds through trees around behind the Castle mound, then swings</p>	

Remember that you use these walk guides at your own risk. Take precautions and if unsure – turn back!

COSTA BLANCA MOUNTAIN WALKERS - WALK DESCRIPTION

<p>L to rejoin the "Calvari" near its top. Follow it up past the "Ermita Santa Barbara" onto the upper level, within the remnants of Castle walls (488m) from where there are fine views of the surrounding countryside.</p>	770m, 16min
<p>Walk down the "Calvari" track, until you reach the steep concrete lane of your upward route. Go L down it to the cross lane of "C' Cirinco". Turn R and follow it as it turns L then R down steps, then at a 'T' junction turn L. Go straight ahead down steps ignoring all side turns until you reach "Placa Major" turn L into it. Observe the circular font, the church of "Esglesia de Santa Anna" and attached on its R the "Palau and Torre de la Baronia" which has served as a jail and courthouse and is now a cafe. Descend steps near the font into "C' Major". Ignore a street on R, go down more steps to the first cross street (with more steps ahead). Turn R and then where the road splits, bear L passing another small font then R down a ramp and steps into "C' La Font". Turn R then L to reach the CV-770 main road. Turn R and in a short distance reach the "Llavador" on the R.</p>	1.61km, 28min
<p>Cross the road with care onto the pavement. Turn R uphill and in several meters, find a gap in the metal fence. Step through (blue dot on rock) and turn R along a footpath. Shortly, just after a left hand bend, leave it to find a vague path on the R, which curves down L over two metal plank bridges. Almost immediately, just past the first couple of trees, turn R to climb a ramp which slants up L and continues up onto concrete. This leads to a tall bancal where the path turns R ignore it. Turn L along a low wall top along the back edge of a terrace to reach a concrete cross track. Turn R uphill to a broad cross track.</p>	1.94km, 34min
<p>Turn L behind a villa and follow the track. Ignoring side turns, descend a little. When it veers L and becomes concrete keep R at a pylon where it reduces to become a path then curves R. It winds up to meet a surfaced lane. Turn L, ignore a bridge on the L and go straight ahead past a vehicle barrier to reach the "Font Major and its camping site.</p>	2.62km, 45min
<p>Ignore steps on the R, follow the main track which curves L to the bed of the "Rio de Voltes". (usually dry). Cross it at stepping stones. Go up steps, turn R then L up wooden steps. Continue up more sections of steps through the camping terraces, following the line of light posts to reach the final level beside a pylon with terraces on either side of you. Go straight ahead on the L side of a boulder, up between trees and rocks to reach an open area above with a pylon. Just beyond this you junction with an overgrown track leading up to a dilapidated finca.</p>	2.94km, 51min
<p>Turn L down the track and follow it passing a chain across it, then over several sections with landslip debris, to junction with a cross track at another finca.</p>	3.19km, 56min
<p>Turn L downhill to reach a junction, turn sharp R onto a concrete track and follow it past "Casa Fondet" to where the concrete ends. Follow a vague path down L across a curving terrace, around the back of a wire fence. The path becomes more obvious, but is a little overgrown in places (avoid descending towards the barranco). The path traverses around until eventually it skirts terraces, then emerges on a cross track (Y/W markers) beside a water storage tank. Turn L down a steep concrete track to reach a surfaced lane and mini Llavador with information board for the "Bassa de Batle" irrigation reservoir.</p>	4.34km, 1hr, 9min

Remember that you use these walk guides at your own risk. Take precautions and if unsure – turn back!

COSTA BLANCA MOUNTAIN WALKERS - WALK DESCRIPTION

<p>The next section follows the "SL-CV112" (marked G/W). Turn L down the lane for about 7m and turn sharp R onto a path, which descends between two old finca's to reach the Cv-770 main road. Cross it with care onto a concrete track. Descend it, ignoring all side tracks, to reach the "Assut" (an islamic weir and mill ruin) close to where the streams of the "Voltes and Arc" converge to become the "Riu Sella" (information board).</p>	4.92km, 1hr 16min
<p>The track crosses a bridge and swings R. After about 40m turn L onto a narrow path, which slants up above a mill-house. Ignore a path cutting back L (G/W cross) and another on the R. Continue passing behind the casita. Follow a terrace around its orchard to reach a part concrete track. Turn L and ascend to reach a crossroads, with a surfaced lane on the L (signpost). Here we leave the SL-CV112.</p>	5.69km, 1hr 26min
<p>From the signpost take a rough track straight ahead. Shortly, it bears L (heading to a ruined casita) ignore it and continue straight ahead on a path, sometimes crossing the foot of landslip debris. Follow a terrace which curves rightwards, then go up a ramp (a little overgrown in places) and follow this old mule trail as it weaves up through terraces, to emerge onto a flat col.</p>	5.79km, 1hr 34min
<p>Take a track on the L for about 10m, to a junction. Turn L up a track with rises around a bend, then passes beneath a casita. Go on, ignoring two tracks on the R, to eventually pass above a finely located finca. Just beyond it (and before reaching a chain) a track cuts back up L. From here a fine view ahead towards "Puig Campana" has unfolded. Turn L and follow the track to a clearing on a col (499m) and a great view north of "Penya deal Sella".</p>	6.84km, 1hr 48min
<p>Go straight ahead and in about 25m, just before the track starts to rise up towards a small knoll, look for a vague path on the R. Go down onto the end of a terrace, step down, then go leftwards between terraces on another mule path to pass to the R of a ruined casita. Here the path widens and swings R. It descends to a terrace, where it cuts back L towards another small casita. Ignore this and continue to the R, along a rather overgrown terrace. Press ahead and very soon it opens out, descending gently (with wonderful views to your L) to pass above a finca and beside almond trees, to reach a surfaced lane.</p>	7.28km, 1hr 57min
<p>Turn L down round a righthand bend (good views up the valley of the "Arc") Ignore paths and tracks on the R. Continue down the road and ignore a lane joining on the L (signboard for CV-SL112, which you now rejoin) and continue to reach the picnic place and down to its L the "Font de L'Alcantera".</p>	7.87km, 2hr 6min
<p>Return to the road from the font, turn L follow the lane across a bridge ("El Pon de l'Alcantera), over the "Rio de l'Arc" to reach a junction. Turn R past an information board. Turn L (signpost) up a concrete ramp and go R onto a path between two casita's (G/W) to reach a surfaced road above (signpost).</p>	8.23km, 2hr 11min
<p>Turn L and in about 35m turn R across the road up a track which slants back R (signpost). At a junction go L, (G/W) in a few metres turn R. Ignore other tracks and follow the crest heading into trees (at the information board for "La Solana", don't miss the fine views up the Arc valley, with the climbers crags on the R). Eventually, the track junctions with a surfaced road (signpost).</p>	8.87km, 2hr 22min
<p>Turn L along the lane. Pass below a gated casita & above a shack from Bonnie Scotland!. At a lefthand bend just before a large villa on the L and opposite a steel power cable pole leave the SL-CV112. Descend R to a terrace of almonds. Pass around the back of it to reach a path at its far end. Follow it along a disused terrace when it</p>	

Remember that you use these walk guides at your own risk. Take precautions and if unsure – turn back!

COSTA BLANCA MOUNTAIN WALKERS - WALK DESCRIPTION

ends at a corner. Step down one level and turn R heading along the rather overgrown terrace towards a small casita. Pass behind it onto a track, which emerges onto a surfaced road at a right hand bend.

10km, 2hr 39min

Turn L and follow it down, passing to the R of the cemetery and continue downhill to the car park.

10.6km, 2hr 46min

Spanish maps included within these descriptions are provided courtesy of the Spanish IGN and remain © Instituto Geográfico Nacional

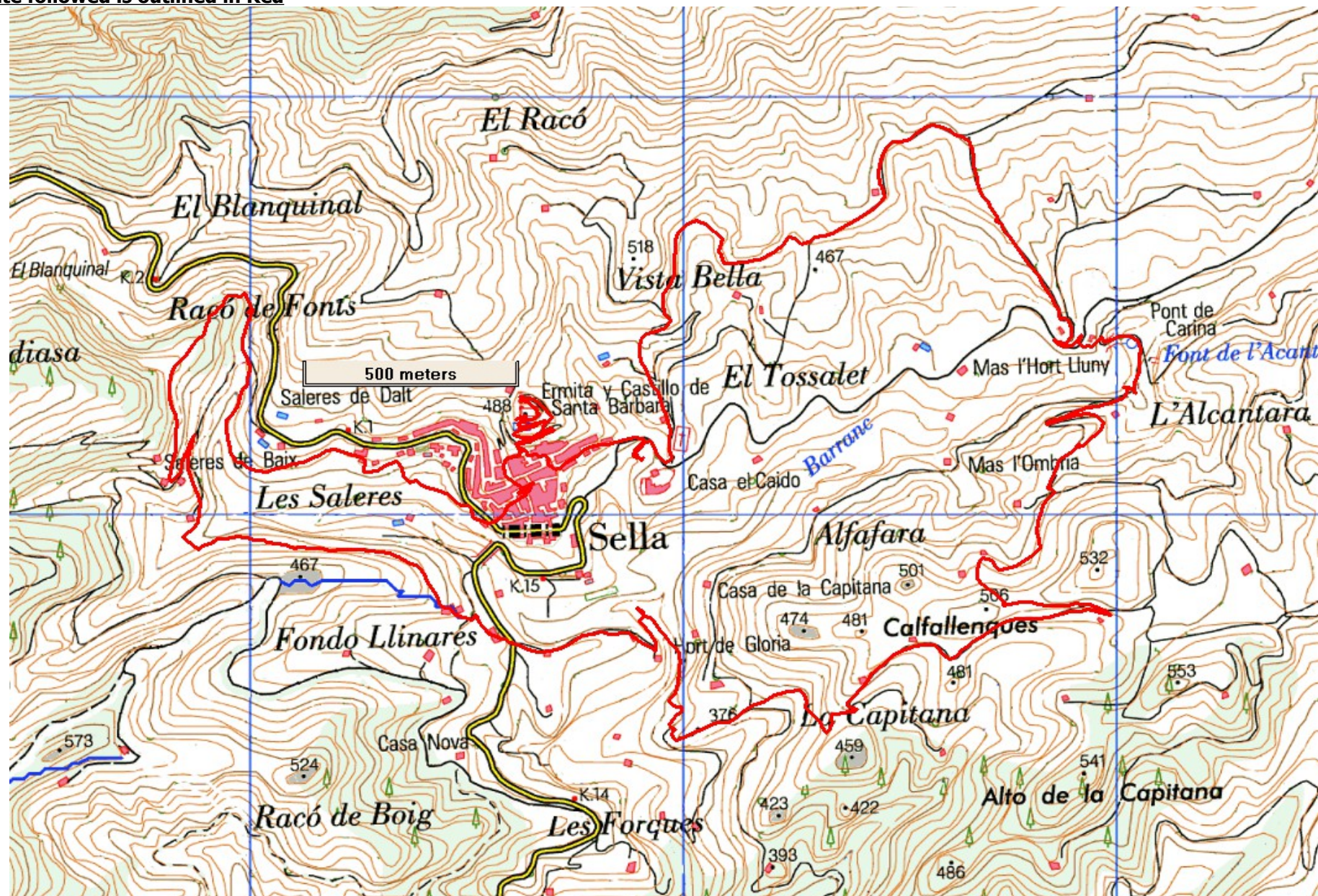
Walk Recommendations or restrictions

Easy for the grade only the accumulated height gain qualifies it, otherwise it would be M/B

see map below.....

Remember that you use these walk guides at your own risk. Take precautions and if unsure – turn back!

Route followed is outlined in Red



Remember that you use these walk guides at your own risk. Take precautions and if unsure – turn back!