

COSTA BLANCA MOUNTAIN WALKERS - WALK DESCRIPTION

Visit www.walksinSpain.org for more walks descriptions in Spain

Walk description originally prepared by:-	Ralph Phipps	
Last Updated	30 th June 2018	
Title of Walk	To the Refugio dels Estanys de la Pera	
Location of Start (include name of nearest village/town at start of description)	Aransa Refugi de Prat Miro	
Key Statistics for walk - Distance in km	13	
Key Statistics for walk - Ascent in m	420	
Key Statistics for walk - Walking time and total completion time including any stops	3.5hr 4.5hr	
Key Statistics for walk - Grade (using CBMW system)	MS/A	
Grid reference of start point (if known)	Lat: 42.423596, Long: 1.619710	
Directions to Start	<p>From the main N260 sub Pyrenean road turn up the LV4036 road which starts just to the W of Martinet. Follow this for some time until you reach a fork L signed to Aransa (sometimes Aranser). Take this and continue to the village of Aransa and then then pick up the signs for the ski road. Turn R in the village to follow this and continue through the ski resort soon on a forest track. Follow this ahead to reach a building with railings at a fork in the track. This is Refugio Prat Miro – normally unoccupied. Park anywhere here. Off track parking for at least 6 cars.</p>	
Short walk description	<p>This is a linear walk to and from the Refugi Prat Miro. Although it might be possible to drive further to the Caseta Forestal de Pollineres (Many do!) it really require a 4 x 4 to do so.</p> <p>The walk along the broad forest track has an easy angle and affords great views all around. The part from the Caseta is wonderful and the Estany is a lovely destination.</p>	
Full Walk Description		Elapsed Walking Time/Distance so far
Park anywhere around the Refugi Prat Miro and take the RH fork in the track leading uphill.		

Remember that you use these walk guides at your own risk. Take precautions and if unsure – turn back!

COSTA BLANCA MOUNTAIN WALKERS - WALK DESCRIPTION

Follow this for 3.7 km to reach the Caseta Forestal, small pond and picnic tables and BBQ points and from here follow the finger post signing the R/W footpath towards the Estanys. This also has a yellow number 1 marker. This sticks close to the stream (and does not climb back up to the track for some time).

3.7km, 1hr

Eventually you pass a large waterfall on your RHS and soon return to the track to walk the last few metres to the Estany.

5.3km, 1hr 43min

By continuing along the track and taking small short cuts on footpaths you will arrive at the Refugi.

5.8km, 1hr 55min

Once sated with the views of Perafita and the surrounding peaks return by the same route. The attached gps track shows a couple of points where it is possible to cut the long sweeping corners of the descending track.

Spanish maps included within these descriptions are provided courtesy of the Spanish IGN and remain © Instituto Geográfico Nacional

Walk Recommendations or restrictions

None. This walk could be used to access other higher peaks.

see maps below.....

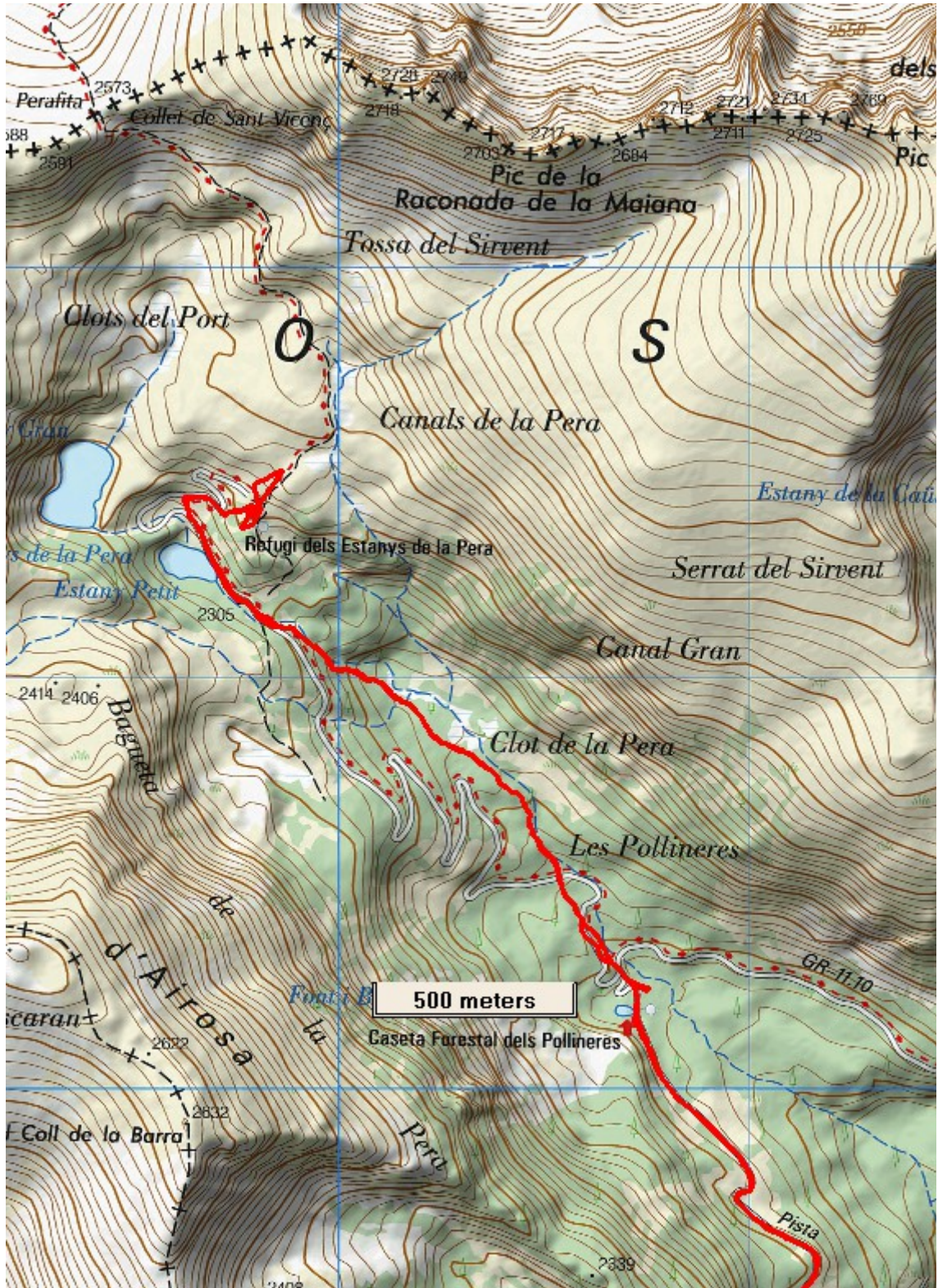
Remember that you use these walk guides at your own risk. Take precautions and if unsure – turn back!

Route followed is outlined in Red (destination at top)



Remember that you use these walk guides at your own risk. Take precautions and if unsure – turn back!

Route followed is outlined in Red – 2 (destination at top)



Remember that you use these walk guides at your own risk. Take precautions and if unsure – turn back!