

COSTA BLANCA MOUNTAIN WALKERS - WALK DESCRIPTION

Visit www.walksinSpain.org for more walks descriptions in Spain

Walk description originally prepared by:-	Ralph Phipps	
Last Updated	29 th September 2018	
Title of Walk	Alba waterfalls	
Location of Start (include name of nearest village/town at start of description)	Benasque El Turpi, at the point where the road to Banos de Benasque crosses the Esera river.	
Key Statistics for walk - Distance in km	2.5	
Key Statistics for walk - Ascent in m	140	
Key Statistics for walk - Walking time and total completion time including any stops	1hr 1.5hr	
Key Statistics for walk - Grade (using CBMW system)	E/C	
Grid reference of start point (if known)	Lat: 42.667655, Long: 0.582050	
Directions to Start	Drive up the A139 to the N of Benasque and after passing the reservoir and the last of the road tunnels take a R turn signed to Banos de Benasque. Drop down the hill to park either just before or after the small hotel on the LHS.	
Short walk description	A short but demanding walk to the waterfalls of the Alba – one of which is 50m high. Can be connected to the Banos de Benasque walk.	
Full Walk Description		Elapsed Walking Time/Distance so far
From your parking walk a little way back along the road you drove in on and find a track on the RHS signed to Cascada de Alba.		50m, 1min
Take this for a few metres and at a track fork look out for a footpath leaving on the L with green paint flashes and a finger post. Take this.		
Follow this as it first climbs up steeply to pass a rocky knoll on your RHS and then drops equally steeply to reach a bridge at the first smallish waterfall.		745m, 16min
Cross the bridge and climb over a small rib to descend to a finger post. Follow the path to the L up some steel steps to enjoy the viewpoints for the waterfalls and then return to the finger post and cross the bridge (now on your L). This is only signed to a Sender Botanico but is the continuation of your circular path.		1.1km, 25min
Climb steeply up and eventually reach a further finger post where you turn R (the L turn		

Remember that you use these walk guides at your own risk. Take precautions and if unsure – turn back!

COSTA BLANCA MOUNTAIN WALKERS - WALK DESCRIPTION

features a short circular route returning you to this spot)
This soon starts to descend steeply, passes a viewpoint (mirador) and eventually returns you to the road.

1.2km, 30min

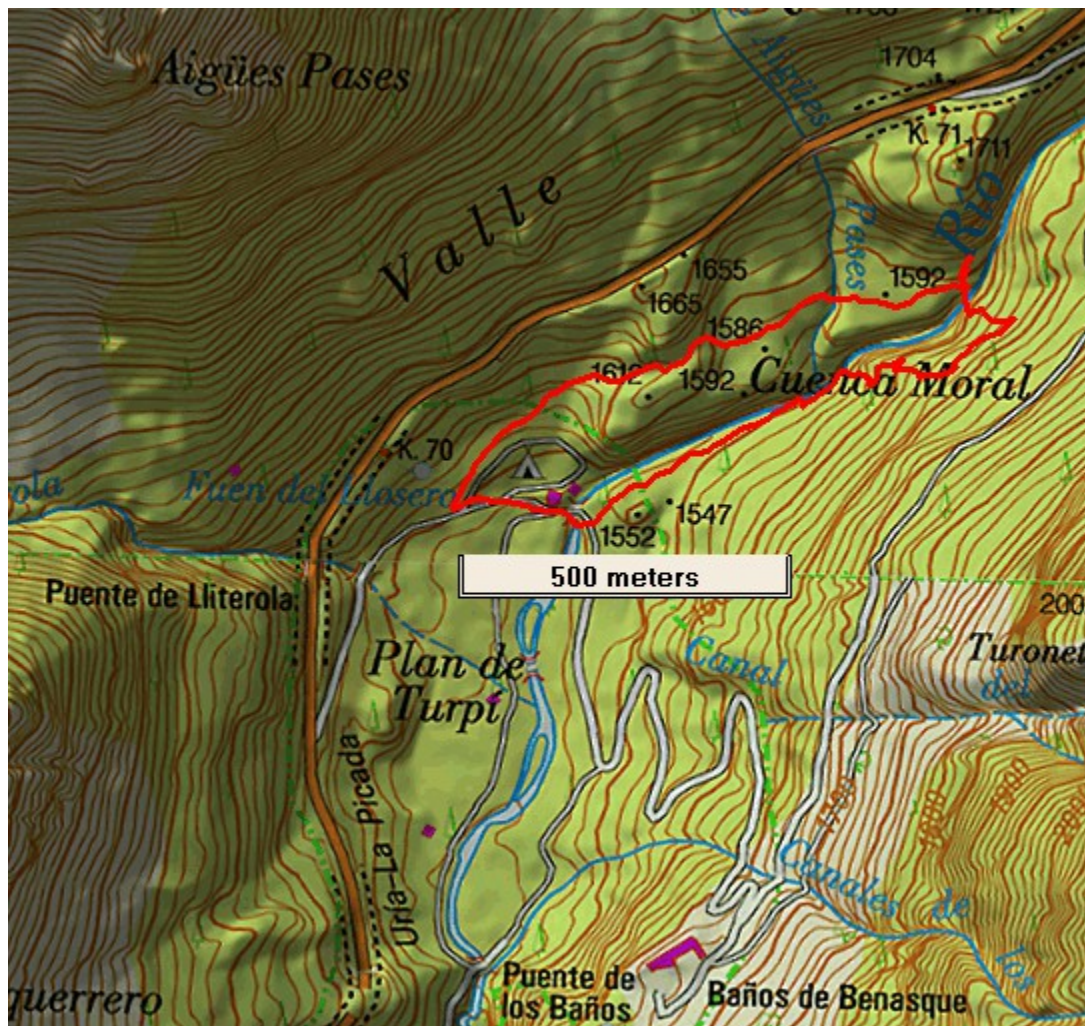
Here turn R for a few metres to pass the hotel and reach your parked car.

Spanish maps included within these descriptions are provided courtesy of the Spanish IGN and remain © Instituto Geográfico Nacional

Walk Recommendations or restrictions

A more rugged expedition that the stats would suggest. If you are looking for something longer it is straightforward to connect this walk up to the Banos de Benasque route by following the Botanical trail where you meet it and then turning R on the track.

Route followed is outlined in Red



Remember that you use these walk guides at your own risk. Take precautions and if unsure – turn back!