

COSTA BLANCA MOUNTAIN WALKERS - WALK DESCRIPTION

Visit www.walksinspain.org for more walks descriptions in Spain

Walk description originally prepared by:-	Ralph Phipps
Last Updated	25 th November 2018
Title of Walk	Cueva del Agua, Santuario de Tiscar and La Pedriza
Location of Start (include name of nearest village/town at start of description)	Tiscar Santuario del Tiscar car park on the A6206.
Key Statistics for walk - Distance in km	9.2
Key Statistics for walk - Ascent in m	460
Key Statistics for walk - Walking time and total completion time including any stops	2.75hr 4.5hr
Key Statistics for walk - Grade (using CBMW system)	MS/B
Grid reference of start point (if known)	Lat: 37.768598, Long: -3.023337
Directions to Start	From the A92N motorway which runs between Puerto Lumbreras and Granada take the A315 going N to just beyond Pozo Alcon and look out for a more minor road – A6206 – going towards Quesada and Tiscar. Follow this to the parking on the main road just below the Monasterio.
Short walk description	A “touristy” walk taking in the delights of the Cueva del Agua, the monastery and the castle before walking up a valley to reach the summit of La Pedriza and an easy return along a track and road.
Full Walk Description	Elapsed Walking Time/Distance so far
From the car parking on the main road walk down the hill to the second turning on the R with its sign to the Cueva del Agua.	200m, 3min
Follow the tarmac down to the end and then drop down on a track to the L to reach a tunnel through the rock.	530m, 8min
Follow this for a few metres to emerge at sets of steps going either up or down with railings. Explore all of them to see the best views of the cueva, the key feature of which is reached from the bottom amphitheatre.	
Now return to the car park and turn up R signed to the Santuario and follow this up around a bend to arrive at the main plaza where there is a small church on the LHS and	1.8km, 29min

Remember that you use these walk guides at your own risk. Take precautions and if unsure – turn back!

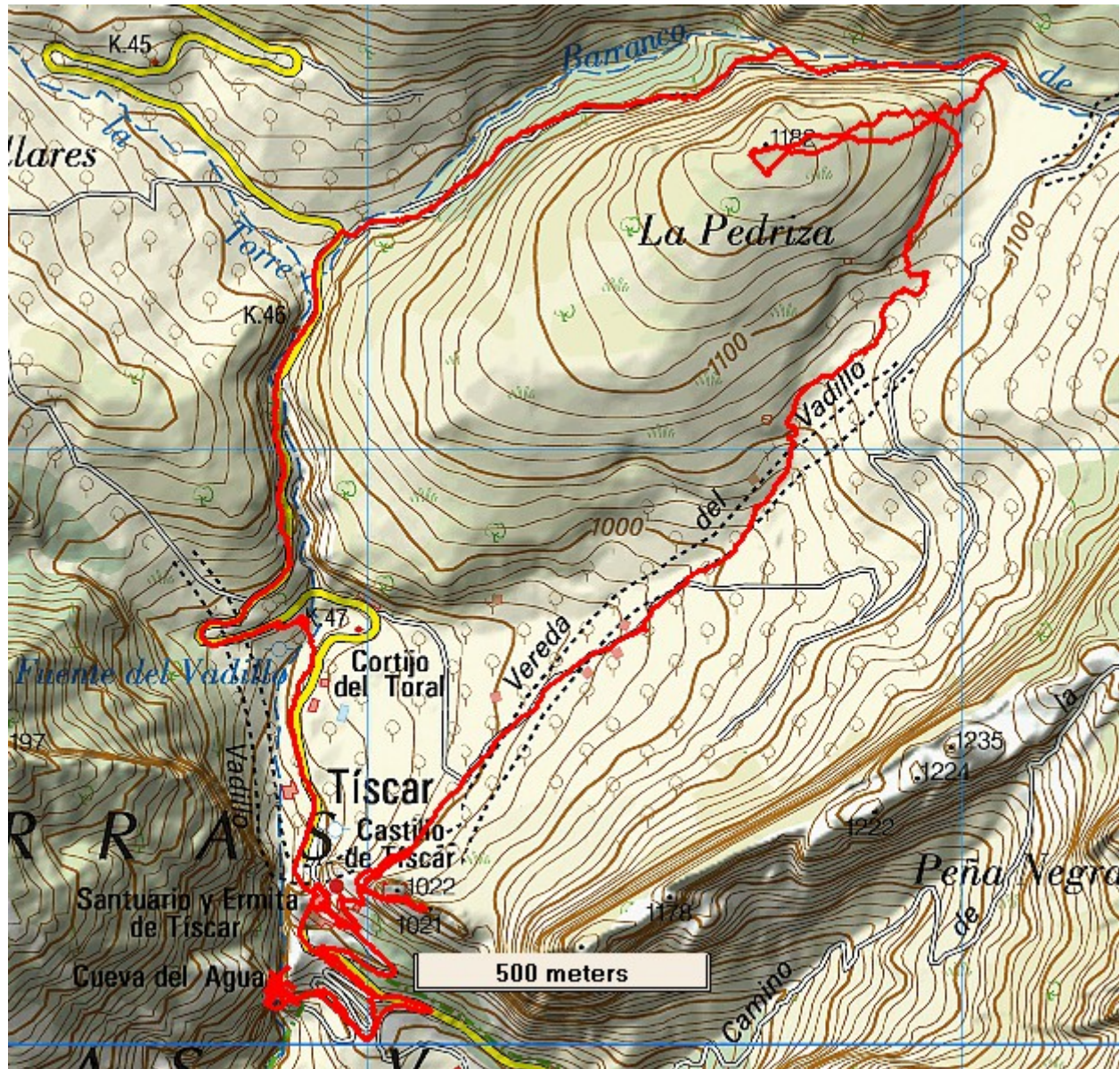
COSTA BLANCA MOUNTAIN WALKERS - WALK DESCRIPTION

a restaurant (with odd opening hours) down a ramp on the RHS.	2.1km, 33min
Once you've seen all you want to here then walk back out of the plaza and turn L beyond the sign board up a small lane between buildings.	2.4km, 44min
Once these run out the lane becomes a path which doubles back to the R and then the L before rounding some crags. Now look out for a steeper path going up to the R and follow this to arrive on a slightly descending section which then passes a small building on the LHS to reach a set of steps going steeply up to the castle. (there are gates on these steps which were open when the author visited, but which could be locked!)	3km, 52min
Retrace your steps down from the castle and join the level path a a T-junction where you turn R following this almost level and slightly vague path along a terrace to join a poor track and a few metres further a better track.	
Follow this up to the R and ignore the next fork to the L and then a further fork R.....	3.9km, 1hr 11min
and keep close to the valley bottom to emerge on a narrower engineered path up beside the terraces.	
Follow this up faithfully to reach a small rocky outcrop where the path doubles back to the R and then higher still becomes somewhat vague. Here cross the terraces to the RHS to find a clearer continuation of the path.	
Higher still this disappears and you much keep to the LH edge of the terraces now to soon find yourself below a long crag which you walk beside.	
When this is low enough you can double back to the L.....	5km, 1hr 34min
and begin a clamber up through broken limestone to soon reach the open summit.	5.5km, 1hr 45min
Retrace your steps to be able to descend below the long crag and now you are facing a ruined farm with a fence all around.	
Drop to keep L of all the fences to intercept a track just below a gate.	6.1km, 2hr
Turn L here and follow this out to reach the road.	7.4km, 2hr 18min
At the very quiet road turn L and follow this down towards Tiscar using a couple of signed footpath shortcuts.	
Walk through a short tunnel to arrive at your parked car.	
<small>Spanish maps included within these descriptions are provided courtesy of the Spanish IGN and remain © Instituto Geográfico Nacional</small>	
Walk Recommendations or restrictions	None

See map below.....

Remember that you use these walk guides at your own risk. Take precautions and if unsure – turn back!

Route followed is outlined in Red



Remember that you use these walk guides at your own risk. Take precautions and if unsure – turn back!