

COSTA BLANCA MOUNTAIN WALKERS - WALK DESCRIPTION

Visit www.walksinSpain.org for more walks descriptions in Spain

Walk description originally prepared by:-	Ralph Phipps and Mary Gough
Last Updated	18 th November 2018
Title of Walk	Rio Borosa
Location of Start (include name of nearest village/town at start of description)	Borosa Information Centre N of Arroyo Frio
Key Statistics for walk - Distance in km	24.7
Key Statistics for walk - Ascent in m	710
Key Statistics for walk - Walking time and total completion time including any stops	5.5hr 6.5hr
Key Statistics for walk - Grade (using CBMW system)	VS/A
Grid reference of start point (if known)	Lat: 38.015051, Long: -2.865022
Directions to Start	From the A92N motorway which runs between Puerto Lumbreras and Granada take the A315 going N and then the A319 to arrive at Cazorla. Continue on this road through the village and on past Burunchel and further on the village of Arroyo Frio. Torre del Vinaigre on the LHS indicates the R turn necessary to drive the 2km or so to the Rio Borosa visitor centre.
Short walk description	A walk up a delightful valley with ever changing scenery to reach one of several lakes, returning the same way. A very popular walk liable to interruption at present due to remedial work following flooding (Nov '18) Kept open at week-ends.
Full Walk Description	Elapsed Walking Time/Distance so far
Start off by walking away from either of the car parks (at the visitor centre or on the other side of the road) by walking along the road in the same direction as you drove in to shortly reach a bridge over the river where you turn R, pass a gate and commence your walk along a broad track.	
Keep ahead by the main water course until you reach a finger post with a sign to Cerrada de Elias where you turn R	3.5km, 42min
to drop down to the path nearest the river which soon has suspended boardwalks.	

Remember that you use these walk guides at your own risk. Take precautions and if unsure – turn back!

COSTA BLANCA MOUNTAIN WALKERS - WALK DESCRIPTION

Rejoin the track and keep ahead on the main track to finally reach the Hydro station where the track ends and a footpath continues ahead steeply.

7.6km, 1hr 32min

Reach a tunnel in the rock which you follow taking care not to step into the water channel beside it!!

Continue ahead through a second tunnel section to emerge beside a lake (reservoir really)

Cross the dam onto a broad track and now continue ahead beside this to reach a second lake. At this point you must decide how far you wish to progress before returning to your starting point. It will seem further than your outward journey!!

Return the same way. As an alternative to the section on boardwalks beside the river you can consider continuing to follow the track which climbs quite steeply for a while before descending to meet your outgoing path at the Cerrada de Elias sign.

Finally retrace your steps back to the gate and then the car parks.

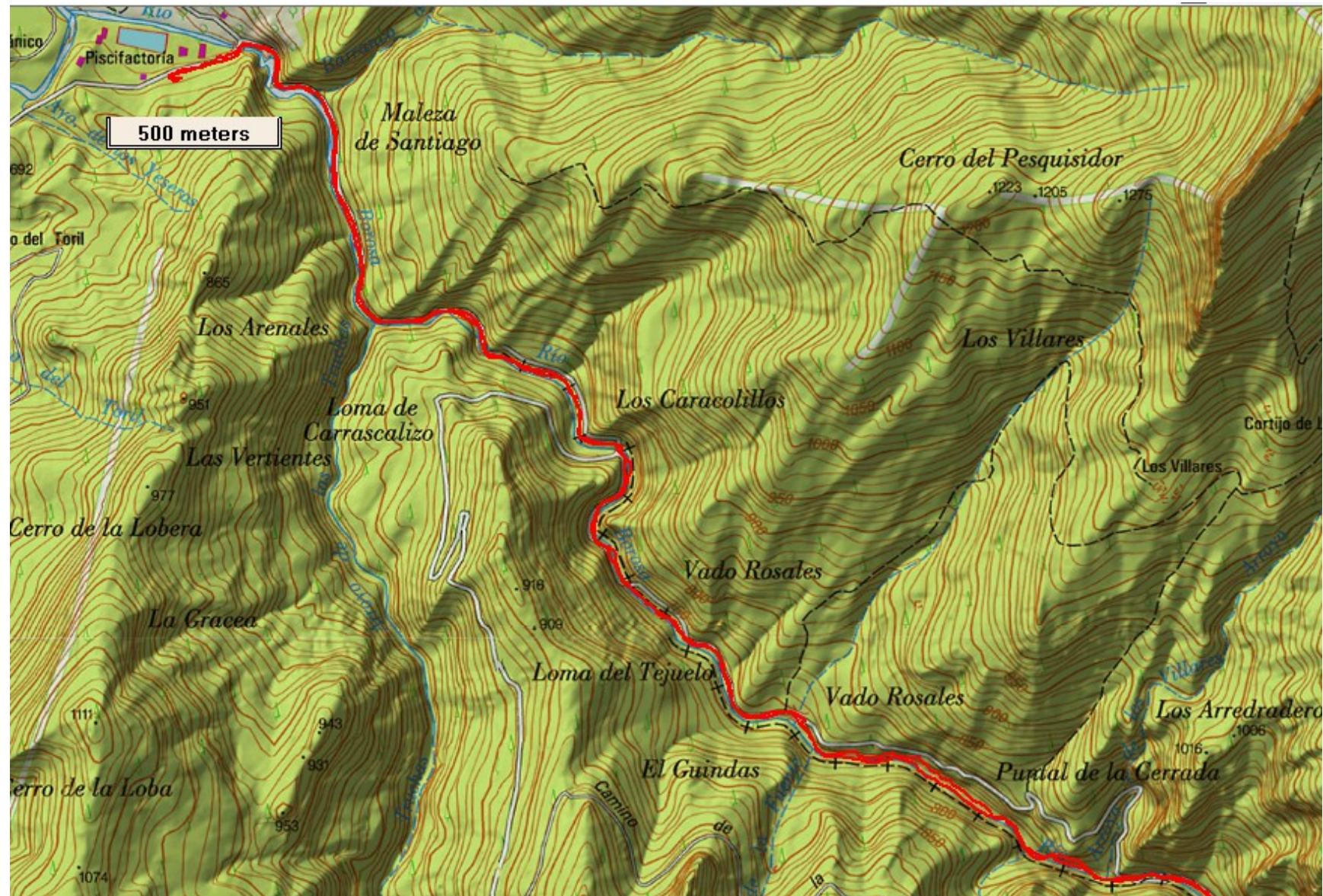
Spanish maps included within these descriptions are provided courtesy of the Spanish IGN and remain © Instituto Geográfico Nacional

Walk Recommendations or restrictions

Torch advised for the tunnel sections.

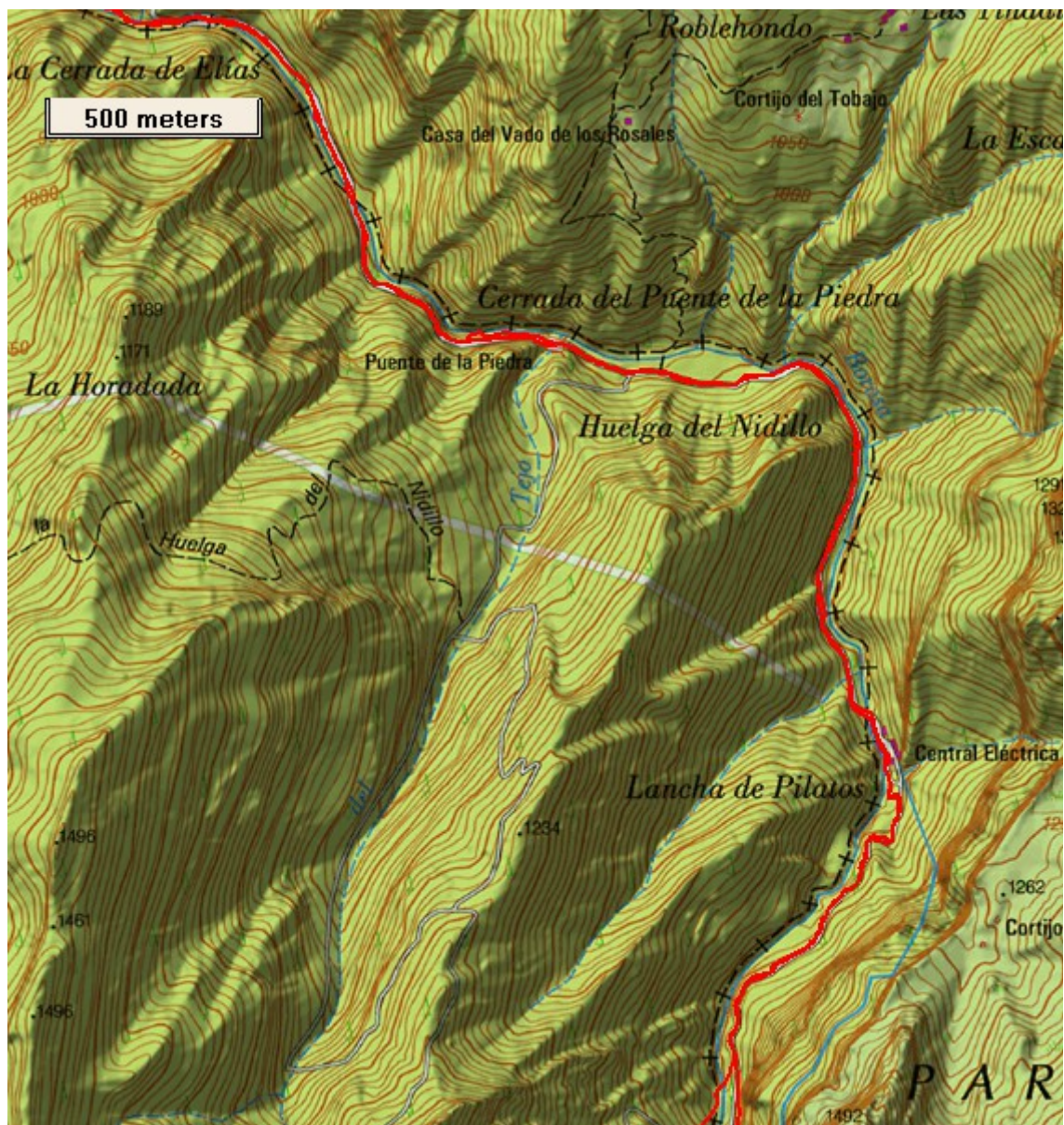
Remember that you use these walk guides at your own risk. Take precautions and if unsure – turn back!

Route followed is outlined in Red – map 1



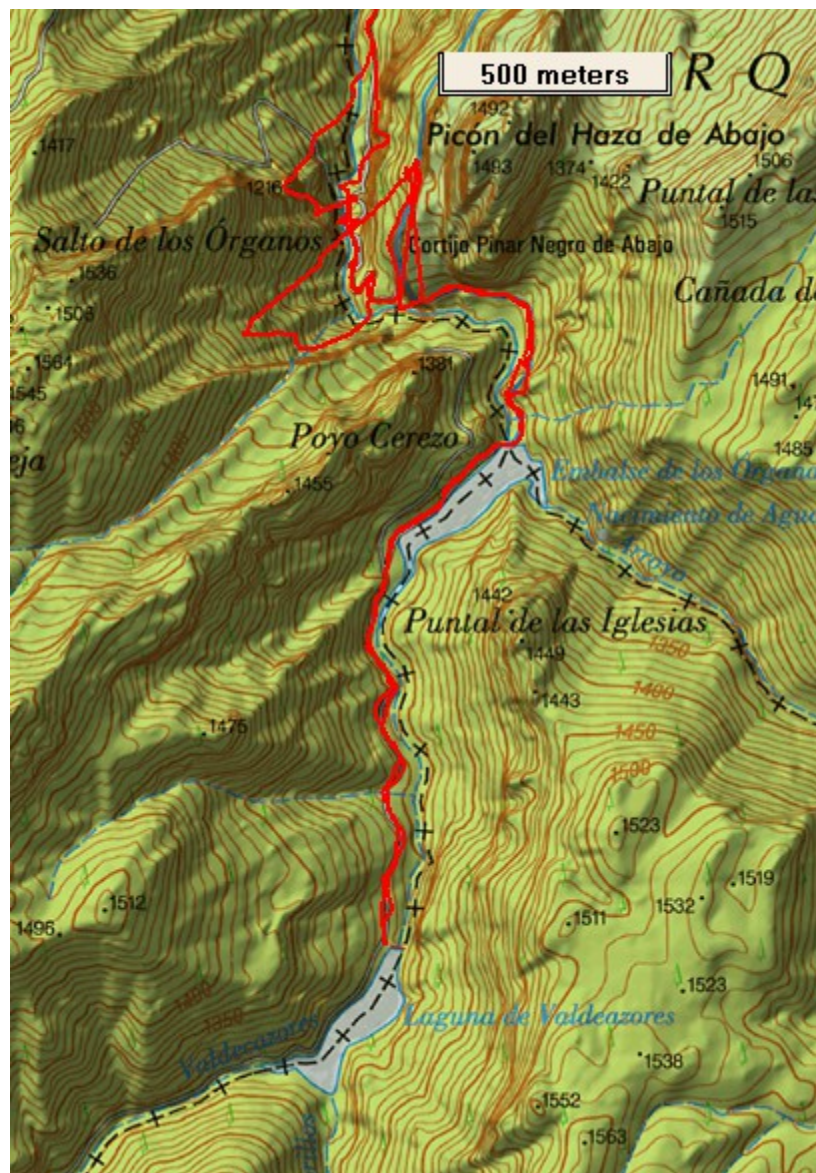
Remember that you use these walk guides at your own risk. Take precautions and if unsure – turn back!

Route followed is outlined in Red – map 2



Remember that you use these walk guides at your own risk. Take precautions and if unsure – turn back!

Route followed is outlined in Red – map 3



Remember that you use these walk guides at your own risk. Take precautions and if unsure – turn back!