

COSTA BLANCA MOUNTAIN WALKERS - WALK DESCRIPTION

Visit www.walksinspain.org for more walks descriptions in Spain

Walk description originally prepared by:-	Mary Gough
Last Updated	3 rd June 2020
Title of Walk	La Solana, Tossal Gran and Riu Xalo or Gorgos, 18 th March 2019
Location of Start (include name of nearest village/town at start of description)	Jalon Tourist info.car park
Key Statistics for walk - Distance in km,	14
Key Statistics for walk - Ascent in m	750
Key Statistics for walk - Walking time and total completion time including any stops	4.2hr 5.1hr
Key Statistics for walk - Grade (using CBMW system)	S/B/Scr
Grid reference of start point (if known)	Lat. 38.743620, Long: -0.016589
Directions to Start	In Jalon the car park under trees opposite Alleluya bar at Information office.
Short walk description	A circular route over varied terrain,with early steep ascent, two ridges,two short scrambles,a cave visit, extensive views through the Jalon valley and visit a well preserved Roman water feature alongside the Rio Xalo o de Gorgos
Full Walk Description	Elapsed Walking Time/Distance so far
Turn L out of the car park and cross the river, take the next L turn then just past the restaurant Riu Rau turn R on surfaced road, continue to reach a rebuilt small finca – almost immediately look for narrow path to L.	885mtr. 10min
Take this path and continue to cross a fruit terrace to the far side (red paint) turn R on a rising path (red paint) over terraces and up along the RHS of a wire perimeter fence, at far top corner turn L along the topside and then drop down onto a clearer path, continue to tarmac to turn R and within a few metres back on a path which leads onto a track and emerges to tarmac.	1.6km,. 24mins 2.5km, 40min
Turn R and trend R beginning to ascend and reach the entry to a cave at LHS (cairns).	
Continue winding up (cairns),pass a ruin on a level section then rise again to reach the ridge (Solana).	3.2km, 58min

Remember that you use these walk guides at your own risk. Take precautions and if unsure – turn back!

COSTA BLANCA MOUNTAIN WALKERS - WALK DESCRIPTION

Turn R along the RHS of ridge to the eastern end and descend down to a Col with a large cairn.	3.85km, 1hr10min
Cross the col and continue on an undulating path (Y/W) to reach a ruin.	4.9km, 1hr26min
Pass the ruin and reach a junction with signpost, take R fork (signed Xalo)and continue to the next junction.	5.15 km,
Take the L fork (Y/ W cross) leading through a forested area (cairns) and descend to the next junction.	5.3km, 1hr36min
Take the L fork aiming for a large crag (with climbing bolts) trend L and scramble up towards this then turn L on a rising path below crags,continue (cairns) to reach a scramble on RHS.	5.58km, 1hr50min
Ascend this scramble then work L to reach old terraces.	5.6km,
Turn R and upwards across terraces to reach two large paint marks on rocks (Greenwich Meridian).	5.75km, 2h
Pass through the paint marks and continue rising alongside the ' Meridian ' crag,keeping to RHS of gully trend R and upwards to reach the summit of Tossal Gran (large cairn).	6.10km, 2h12min
Turn L along the ridge and descend down to reach a col with signpost .	6.65km, 2h24min
Take direction signed Lliber, continue to reach a ruin with a well Pla de l ' Avenc.	7.4km, 2h 38min
Pass to RHS of ruin and continue to descend on a clear path and reach a spur /low ridge leading L (cairn with White paint X).	8.82km, 2h54min
Turn L along this spur to the far end and turn L (cairns) and descend steeply (cairns) to reach a broad terrace wall, follow across and emerge on a track.	8.9km, 3hr8min
Turn R and cross riverbed.	9.18km, 3hr14min
Almost immediately turn L on a track which narrows to an ascending path to reach a junction.	9.62km, 3hr20min
Take the R fork (Y/W) and almost immediately R again downwards to emerge on a track	10.6km, 3hr34min
Turn L and soon after turn down to riverbed.	10.9km,
Follow the concrete surfaced riverbed to reach a fingerpost (cycle marker,R/W and Y/W)	11.2km, 3hr46min
Turn R and continue to reach a ruin 'Molinet de Lliber' almost immediately reach an information board at LHS.	12km,, 3hr54min

Remember that you use these walk guides at your own risk. Take precautions and if unsure – turn back!

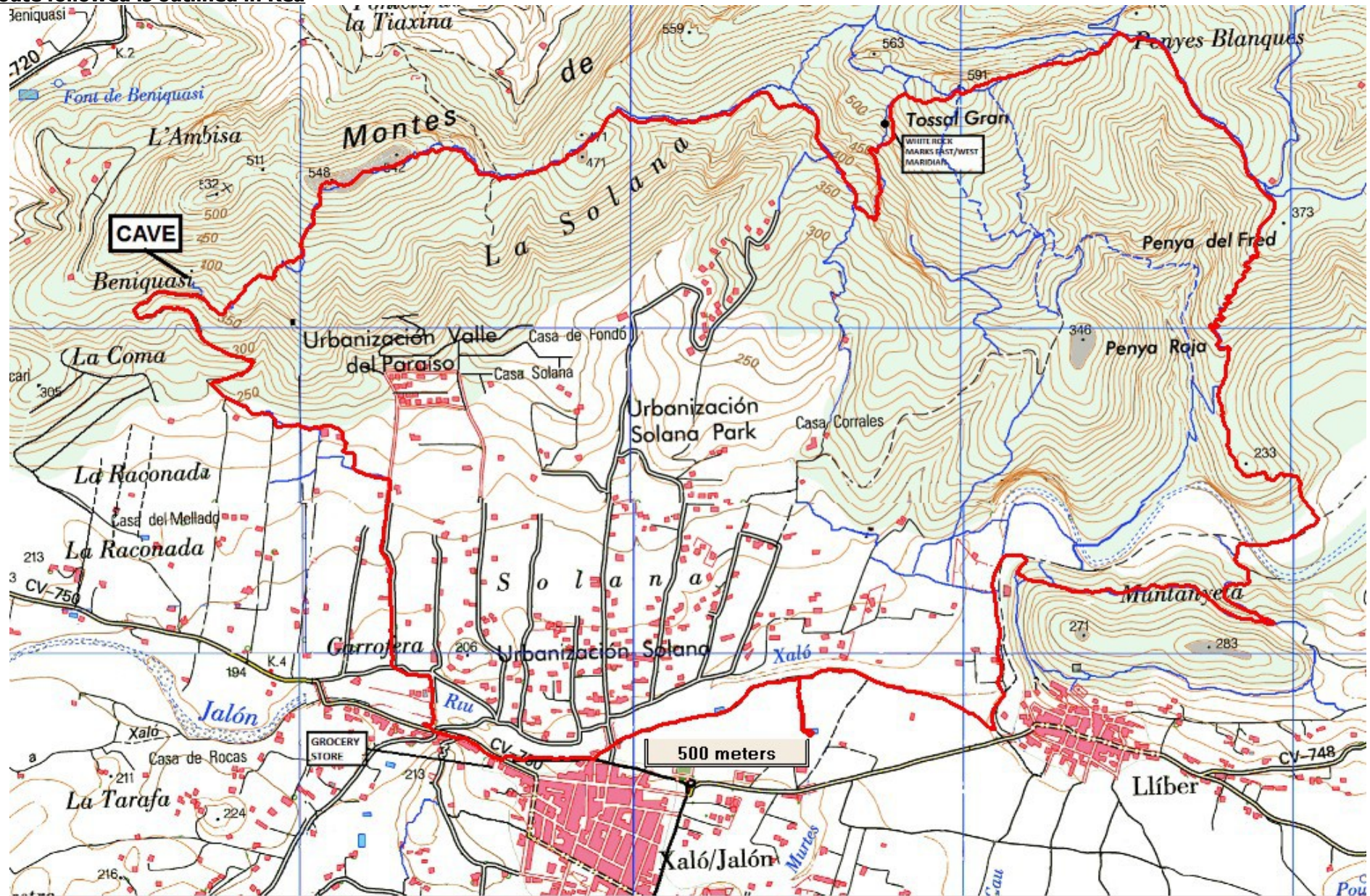
COSTA BLANCA MOUNTAIN WALKERS - WALK DESCRIPTION

Turn L on path across fields to visit the well preserved Roman and Moorish water feature, retrace steps to info .board.	12.4k, 4hr5min
Turn L and continue to meet tarmac.	13.3km, 4hr15min
Turn R and follow pavement to car park.	13.7km, 4hr17min
<small>Spanish maps included within these descriptions are provided courtesy of the Spanish IGN and remain © Instituto Geográfico Nacional</small>	
Walk Recommendations or restrictions	Some early steep ascent

See map below.....

Remember that you use these walk guides at your own risk. Take precautions and if unsure – turn back!

Route followed is outlined in Red



Remember that you use these walk guides at your own risk. Take precautions and if unsure – turn back!