

## COSTA BLANCA MOUNTAIN WALKERS - WALK DESCRIPTION

Visit [www.walksinSpain.org](http://www.walksinSpain.org) for more walks descriptions in Spain

<b>Walk description originally prepared by:-</b>	Mary Gough, 20 <sup>th</sup> November 2017
<b>Last Updated</b>	3 <sup>rd</sup> March 2019
<b>Title of Walk</b>	Malla de Llop circuit from Castell de Castells
<b>Location of Start (include name of nearest village/town at start of description)</b>	Castell de Castells Car park in village centre.
<b>Key Statistics for walk - Distance in km</b>	17 kms
<b>Key Statistics for walk - Ascent in m</b>	1200m
<b>Key Statistics for walk - Walking time and total completion time including any stops</b>	5 hrs 15 min 6 hrs. 35 min
<b>Key Statistics for walk - Grade (using CBMW system)</b>	VS/C/Scr/X
<b>Grid reference of start point (if known)</b>	Lat: 38.723848, Long: - 0.194751
<b>Directions to Start</b>	Take the CV720 from Parcent and Benichembla to Castell de Castells. In the village immediately opposite Hotel Serrella (on RHS) turn L. After 20m.turn L again into Calle Jose Antonio and then almost immediately L again down a ramp into the signed parking area.
<b>Short walk description</b>	An alternate route up and along this mighty ridge, a tough ascent rewarded by spectacular views – an exhilarating and classic mountain walk.
<b>Full Walk Description</b>	<b>Total Time /Distance so far</b>
Turn R out of car park and walk round to join CV720 and turn L, continue to junction and cross road and turn R (signed Famorca, Facheca) walk on LHS of road and within a few mtrs. Turn L up a surfaced cami, continue past houses and pass an orchard	590 mtrs.
Turn up path on LHS, wind up through terraces and emerge at a concrete road Almost immediately turn L and continue up to a campsite	10 mins. 1.35km. 20mins
Take the R fork (signed Castellet) continue for a few meters.	1.6 km 25mins
Turn L on a path through trees, then rejoin track.	1.85km 30 min
Take L fork, follow this path which reaches a track.	2.65km 49mins
Take L fork leading upwards as track levels off turn R (cairn) onto a path	3.07km 56 min

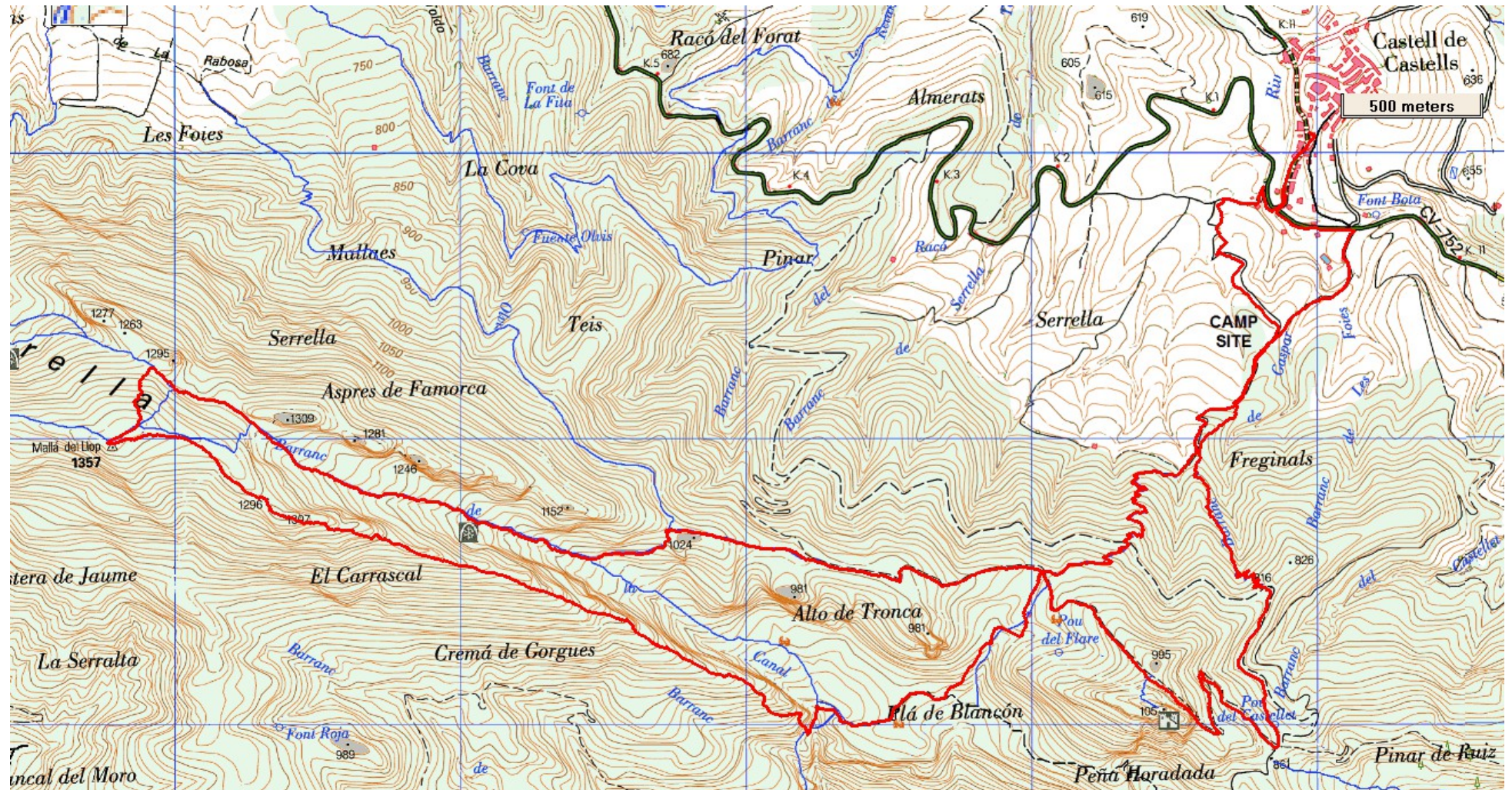
**Remember that you use these walk guides at your own risk. Take precautions and if unsure – turn back!**

## **COSTA BLANCA MOUNTAIN WALKERS - WALK DESCRIPTION**

Continue to emerge on a concrete road and turn R, continue up to the col with signpost, take the R track and continue to reach a T junction.	4.29km.1hr17min
Continue forwards (ignore L turn to Serrella castle) and go downhill,as track levels reach a small crossroads.	4.9km 1hr27min
Turn L on a grassy path and pass a ruin, immediately turn L then work across R to reach some old terraces, follow across to a large boulder ( cairn /rock on top )	5.2km
continue R and work along RHS of bco.(old intermittent path) aiming for a large pine tree ahead, now drop down and R across a burnt/scree area (cairns) to emerge on an old track.	6.km 1hr55min
Turn R and follow on to a path which leads around LHS of terraces and passes a ruin, the path continues then spirals down at RHS of a rocky outcrop to reach the top of a bco. work round this (feint old path) which joins a better path at far side and leads down and across the next bco. (bco.Mates) and joins a path.	6.2km 2hr.6min
Turn L and soon after (cairn).	6.45km
Turn R off path and start to work up (few cairns) rocky ridge towards summit and reach an obvious cairn of wood and rock.	7.17km 2hr30min
Now turn L and follow path working L and R and undulating along the ridge (mainly to LHS),nearing the far end of the ridge stay on the lower LHS path which then levels and leads across to the trig point.	9.27km4hr 18min
Retrace steps for 50 mtrs to a large cairn and turn down L (no real path) make the best way down aiming for some pines on a track below (cairn).	9.6km
Turn R, this undulating track narrows to a path which leads down a canal, follow the main path (ignore narrow turnoffs) and reach a junction on a rock level area (numerous cairns and R/W paint)	11.5km 5hr 5min
Turn L and follow this marked (Y/W) path to crest a ridge and a T junction.	12km 5hr 14min
Turn R and follow to pass animal corrals and soon after a GR post.	12.4km 5hr22min
Ignore L fork and stay on broad track to reach a small crossroad (visited earlier)	13.3km5hr32min
Turn L down a path and emerge on a broad track, go directly across.	13.7km5hr40min
Drop onto a path and spiral down to reach a riverbed.	14.5km 5hr53min
Turn R out of the riverbed and almost immediately reach a junction.	14.6km
Turn L and continue down to campsite, follow the concrete road down to meet tarmac.	15.6km
Turn R and meet CV752 and turn L to return to Castell de Castells.	17 kms 6hr35min
<small>Spanish maps included within these descriptions are provided courtesy of the Spanish IGN and remain © Instituto Geográfico Nacional</small>	
<b>Walk Recommendations or restrictions</b>	Needs stamina for the tough and lengthy ridge

**Remember that you use these walk guides at your own risk. Take precautions and if unsure – turn back!**

**Route followed is outlined in Red**



**Remember that you use these walk guides at your own risk. Take precautions and if unsure – turn back!**