

COSTA BLANCA MOUNTAIN WALKERS - WALK DESCRIPTION

Visit www.walksinspain.org for more walks descriptions in Spain

Walk description originally prepared by:-	Colin Read	
Last Updated	20th April 2019	
Title of Walk	Picatxo (Cim La Sella) & el Miquelet (The camels Humps)	
Location of Start (include name of nearest village/town at start of description)	Jesus Pobre, Car park and street parking in Carretera Pinaret.	
Key Statistics for walk - Distance in km	13	
Key Statistics for walk - Ascent in m	510	
Key Statistics for walk - Walking time and total completion time including any stops	3.25hr 5hr	
Key Statistics for walk - Grade (using CBMW system)	MS/B	
Grid reference of start point (if known)	Lat: 38.798242 Long: 0.083991	
Directions to Start	From CV-738 at the edge of the village, turn into C' Pare Pere opposite the buildings of the Sabadell Solbank. Go up it past a square on L into the C' Major, turn first L into C' Atmetllers, then L at junction into C' Pinaret. Park on side of road or gravel car park on R.	
Short walk description	Woodland paths, tracks and quiet country lanes lead to and from the small wooded ridge with its distinctive "Camels" humps. Where tracks & paths some steep, with the odd scrambling move both up & down, lead via Penya Roja (summit optional) then over and around the two "Humps", giving wide ranging views. Note:- Some interesting scrambling is possible, on the flanks of Miquelet & Picatxo. But they are not included in this route, though the starting points are identified!	
Full Walk Description		Elapsed Walking Time/Distance so far
Walk (west) back up C' Pinaret, ignore the junction on the R and at 'T' junction turn L along Avinguda Cases Noves, signpost to "Quatre Cantons & Molins de Vent". Continue along the surfaced lane, which turns L into C' de Dalt then R into "C' de Baix", to eventually reach a signpost at a track on the R, to "Bassa dels Morros & Alqueria Bisserot".		6min 526m
Turn R and go along the track to a finca. Follow a path on its R to a signpost to "Tres		

Remember that you use these walk guides at your own risk. Take precautions and if unsure – turn back!

COSTA BLANCA MOUNTAIN WALKERS - WALK DESCRIPTION

<p>Molins & Paco Tafarra". Turn L through the wood on a path (red & blue dots) which climbs gently over a shallow col (99m), continue down hill to emerge onto a track.</p>	16min 1.18km
<p>Turn R to where there are columns & a chain. Here, turn L along a vague path to reach a track. Turn R along the broad track passing masonry columns and bear L at fork onto an obvious path which passes ruins to reach a junction with a track. Turn L along it to reach a surfaced Cami.</p>	21min 1.53km
<p>Turn R along the lane to reach a junction. Turn L onto "C'del Bisserot" and pass under the railway line bridge. Ignore all side tracks and a road until you reach a 'Y' junction beside a pylon. Turn R along "C' del Mont - Roi" and pass to the L of a "Comunitat de Regants de Pedreguer" sign, continue to another 'Y' junction with sign post.</p>	36min 2.7km
<p>Turn R signed to "PR-V 440 Racco del Coletó & Xiprerets" (Note; all signposts referred to are for the "PR-V 440"). Go straight ahead on a concrete path, passing between walls. Soon the concrete ends and the path climbs uphill. Ignore side paths, continue until it emerges onto a cross track at the end of a surfaced road, on the edge of an urbanisation (signpost hidden on L). You will return to this junction on the way back.</p>	43min 3.09km
<p>Turn R along the road signed to "Xiprerets circular ". At junction turn L ignore road on R and keep L uphill between villas, turn first L along "Av del Comtat" (red spot on post). When the road ends pass a telecoms mast and go onto a rough track, which occasionally has a concrete surface. Ignore a path with signpost for the PR-V 440 on L and continue along the track to a Deposito building with mast on your L.</p>	53min 3.89km
<p>Continue for about 60 metres to where there is a lone pine tree on the L. From here (Optional) it is possible to climb, weaving up over about 10 bancals to gain the top of Penyà Roja (241m) it is quite overgrown but not scratchy. The views are similar to those from the next top which is more open and accessible. Allow 10 mins there and back.</p>	
<p>Continue along the track past another water deposito, ahead is a top with a cairn and pylons. Note a path on the L at the saddle just before heading up to the cairn! (216m)</p>	57min 4.23km
<p>Retrace your steps for about 23 metres to the saddle and turn R onto the small path, which zig-zags down towards the main roads far below. The path swings R to traverse the hillside. Beside a pylon (with yellow dots on it) at a righthand bend, find a vague path on the L. This initially descends steeply amongst boulders, to reach a better path leading rightwards. It passes close to a road with villas above and reaches a junction of paths with a signpost.</p>	1hr 10min 4.83km
<p>Go L along the path signed "Pedreguer". It leads down steps onto a broad track at a cross junction. Turn R signed "Collao" follow the track to the col. Ignore both the path on L signed to "Pedreguer" and track on R, continue to a second signpost.</p>	1hr 14min, 5.16km
<p>Turn R signed to "Picatxo & Mirador. Follow the path as it winds steeply uphill (G/W marks). Passing beneath a small cave & prayer flags (looking back into the urbanisation, the red Buddhist temple is visible). At a junction with signpost keep L, continue to a second junction, signed to the summit of Picatxo which is soon reached (244m). Can you spot the Buddha? (in place at the time of writing).</p>	1hr 26min, 5.54km
<p>Retrace your steps back to the previous signpost. Turn L signed to "Mirador & Miquelet". Descend the path (east) towards the sea. It passes through a squeeze then traverses to the mirador. Return up over the saddle and bear R to reach a junction and signpost pointing R towards "Miquelet".</p>	1hr 33min, 5.87km

Remember that you use these walk guides at your own risk. Take precautions and if unsure – turn back!

COSTA BLANCA MOUNTAIN WALKERS - WALK DESCRIPTION

Turn R, your path weaves uphill (G/W marks & red dots) it is steep in places with a few scrambly steps but soon leads to the summit of Miquelet (202m) with its shrine.	1hr 40min, 6.09km
From the summit, signed to "Pedreguer" head (east) towards the sea and a rocky knoll, pass it on the L beside a tree. Descend an awkward slab to a path and then go down over several bancals (some awkward), ignore a path on the R at a post with G/W cross (which leads to the start of a scramble) and swing L beneath the cliffs of Miquelet, to reach a junction with a cross track and signpost	1hr 50min, 6.37km
Turn L signed "Pedreguer". In about 100 metres, when directly under the rock ribs leading back up to the summit of Miquelet, there are (G/W) marks on the L. (This is the start of some very good but challenging scrambles up the twin ribs above!). Continue along the track to arrive at a crossroad and signpost.	1hr 52min, 6.53km
Ignore tracks going L & R and go straight ahead (not signed) down steps (G/W marks). After a short distance the marked path turns R. Leave it and turn L along a good path which leads to a Casita. Descend to the R to join a track, turn L along it. After about 60 meters, pass under an open area above on the L, where the rocks descend from the summit of Picatxo right down to the track. (Another difficult scramble direct to the summit, starts from here!). Continue along the track, ignore paths on the R & L to arrive back at "Collao"	1hr 58min, 7.0km
From Collao ignore a track on the L & path on R to Pedreguer and follow the track ahead signed "Raco del Coletó". Pass the cross junction with the steps of your outward route on your L and continue along the track signed "Raco del Coletó per Mont-Roi". The track reduces to a broad path and reaches a junction with signpost.	2hrs 10min, 7.9km
Go straight ahead, signed to "Raco del Coletó", after a short distance the path widens into a track. At a signpost ignore a path on the L and continue straight ahead. Ignore a signpost and path and continue ahead signed "Raco del Coletó 400m" to reach the end of a surfaced road (junction with your outward route).	2hr 18min, 8.69km
Turn R to descend the footpath of your outward route, signed "Callao circular & Pedreguer". At a junction keep R and descend to emerge at the 'T' junction of surfaced lanes (this is the end of signs for "PR-V 440").	2hr 25min, 9.06km
Turn L along the Cami to reach the junction beside the pylon and street sign for "C' del Mont-Roi" again.	2hrs 28min, 9.3km
Turn R and in about 40 metres turn L onto a track. At a 'T' junction turn R onto a surfaced lane. Follow it to a cross road of tracks with a large enclosed well and trough on your L.	2hrs 39min 10.3km
Turn L along a track, ignore a track on the L, continue behind a large industrial building (Masymas) to junction with a surfaced lane.	2hr 45min, 10.8km
Turn L along the lane, bear R across the bridge over the railway line and turn R onto a track signposted to "Tres Molins & Raco Tafarra". Ignore track on L then one on R and bear L between walls (pink dots). Pass a well on your R, then at the start of concrete surface on a lefthand bend leave the track. Take the path straight ahead, ignoring a path on the R (yellow route symbol with white arrow) at a fork keep L. At a 'T' junction turn R then immediately L along a track to a junction with a surfaced lane.	2hr 57min, 11.7km

Remember that you use these walk guides at your own risk. Take precautions and if unsure – turn back!

COSTA BLANCA MOUNTAIN WALKERS - WALK DESCRIPTION

Turn L (ignore sign pointing R) ignore lane on L and at lefthand bend with sign for "Kennels" bear L and after about 20 metres turn R onto a vague path across a field (sometimes obscured by tall grass). It weaves about to emerge onto a surfaced lane.

3hr 02min, 11.9km

Turn R along the lane and at junction go straight ahead onto a concrete Cami. Pass a well at a righthand bend, then take the first track on the L (opposite another track with chain and near Yellow & Green route symbols on concrete structure). Follow the track between walls, to reach a surfaced lane. Turn R and follow it L into C' de Dalt. then R to junction with C' de Pinaret. Finally turn R back towards the parking place.

3hr 11min, 12.7km

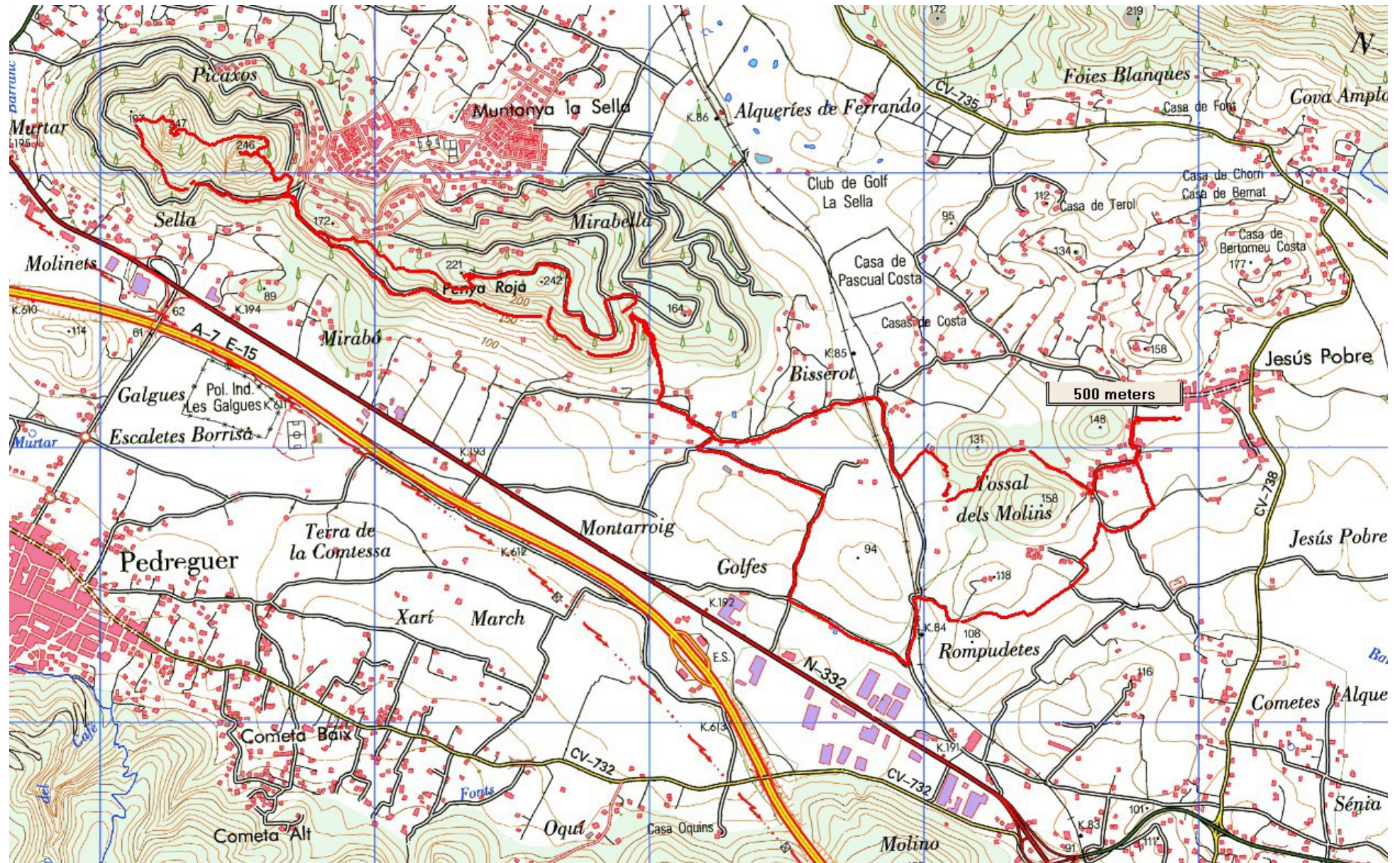
Spanish maps included within these descriptions are provided courtesy of the Spanish IGN and remain © Instituto Geográfico Nacional

Walk Recommendations or restrictions

The descents from Picatxo and Miquelet can be slippery and awkward if wet after rain or if dew is laying on the ground.

Remember that you use these walk guides at your own risk. Take precautions and if unsure – turn back!

Route followed is outlined in Red



Remember that you use these walk guides at your own risk. Take precautions and if unsure – turn back!