

COSTA BLANCA MOUNTAIN WALKERS - WALK DESCRIPTION

Visit www.walksinspain.org for more walks descriptions in Spain

Walk description originally prepared by:-	Colin and Brenda Read	
Last Updated	1st May 2019	
Title of Walk	Cim De L'Aldaia Circuit	
Location of Start (include name of nearest village/town at start of description)	Barx. Public car park at eastern edge of the village	
Key Statistics for walk - Distance in km	11	
Key Statistics for walk - Ascent in m	450	
Key Statistics for walk - Walking time and total completion time including any stops	3.5hr 5.5hr (This allows time at all the points of interest)	
Key Statistics for walk - Grade (using CBMW system)	MS/C	
Grid reference of start point (if known)	Lat: 39.0111, Long: -0.2995	
Directions to Start	Barx. From Gandia on CV-675 at roundabout at eastern end of village with "BARX" sign on it. Take first exit onto Carrer Pep Andres Garba and turn right immediately and right again. Pass the Ajuntament De Barx office, then turn right into car park. Which is adjacent to the roundabout.	
Short walk description	A varied route, which for the most part follows the PRCV-60. Taking in Fonts, a Hoyo, potholes, Neveretes, a summit with fine views and a Botanic micro reserve. After the initial flat valley track the route follows rugged mountain paths for the majority of the way, through a variety of Holly Oaks, Cork Oaks & other species	
Full Walk Description		Elapsed Walking Time/Distance so far
<p>Cross the road beside the roundabout and enter a road heading south (signed to Cementeri) it immediately crosses a bridge and in about 22 metres turn L onto a part surfaced track. Follow it to a 'Y' junction and go L (straight ahead). This is the Cami de Assagador, part of the CRCV-60 with Y/W markings. Follow it, ignoring all side turns, until eventually it splits. Go left down to view the Font La Drove and its picnic area.</p> <p>Go up the ramp on the L of the Font to rejoin the track (signpost for PRCV-60 and GR-236). Continue L to reach a cross roads with signpost. Turn R (PRCV-60 Y/W) passing gates on your L. Follow the narrow track as it rises past olive trees and</p>		1.62km, 20min

Remember that you use these walk guides at your own risk. Take precautions and if unsure – turn back!

COSTA BLANCA MOUNTAIN WALKERS - WALK DESCRIPTION

reduces to a path. It climbs steadily up to the Collado dels Caragols (508m).	2.49km, 39min
Continue ahead across the col. (Where there is evidence of the forest fire). The path bends to the R and rises around the shoulder of the hillside, skirting across the slopes high above a barranco and parallel to it. Eventually a gentle descent converges with the upper end of the barranco. Shortly after merging with it on a level section, a vague path branches R up the bed of a small subsidiary barranco. Ignore it and continue for about 350 metres, passing a coppice of (still standing) burnt pine trees on your L and look for a vague path on the R (cairn, easily missed) Lat: 38.99527, Long: -0.29555.	3.97km, 1hr 09min
Turn R. Leave the PRCV-60 and follow the vague path uphill (cairns), which heads towards a col between two minor hill tops. Pick the best line you can and aim for the centre of the col. Pass through a narrow gap in the dense vegetation at the col. A short descent leads to a plateau with a pond/Boar wallow, on the R. Go a little to the L across the scrub land then bear R heading towards a cliff which can be glimpsed above the vegetation ahead (don't follow path leading R) to emerge in front of the cliff at a fence, which guards a huge 'hoyo' (hole) in front of it! This is the "Sima de L'Adaia" pothole, there are other small potholes lurking in the undergrowth so be careful!	4.47km, 1hr 23min
Follow a path to the L south west (Yellow marks). After only about 15 meters there is a path on the R (ignore it as it only leads in a short distance to the mouth of a pothole! If you want to see it, it takes only a few mins there and back). Continue for about another 50 meters to another very vague path on the R easily missed (just beyond it there is white writing on a rock).	4.49km, 1hr 25min
Turn R and follow it through dense shrubbery. It trends L, and leads to another pothole entrance on the R. Bear L to emerge onto more open hillside. Trend L before traversing L to junction with a cross track, of the PRCV-60 (Y/W).	4.60km, 1hr 29min
Turn R and follow the path up to reach the edge overlooking vertiginous cliffs and turn R to the indistinct summit (751m). There are dramatic views over La Drova and Barx!	4.89km, 1hr 35min
Retrace your steps back along the marked track, ignore the junction with your outward route and continue down to reach a 'T' junction with a signpost which points back to the "Sima de L'Aldia".	5.30km, 1hrs 46min
Turn R, follow the Y/W path which soon reaches a junction (signpost). Go straight ahead, towards La Nevereta (PRCV-60). (There is an optional path on the R, which offers a diversion to view the "Ventisquer del Clot. After visiting it return here). Continue, to a second path on the R signed to "Ventisquer Clot de la Neu" (it is only several paces to this one). Continue along the main path and ignore a path on the L at a signpost, carrying on through regenerating woodland along the PRCV-60. The path eventually descends to a 'Y' junction. Bear R to then reach a 'T' junction and signpost.	7.73km, 2hrs.30min
Turn R towards "La Nervereta" (PRCV-60). Shortly you reach an information board as you enter the "Ruta Botanica Dels Suras". (There are several more such boards along this route). In a short distance almost hidden on your L is the Nevereta (beware of the gap!) Continue down into the "Barranco de Manesa". Ignore a path cutting back L to terraces early on and bear R. You eventually cross the barranco, then climb up L around the wooded hillside, before descending to join a surfaced road. You are rejoining the Cami de Assagador but at the opposite end of the village.	

Remember that you use these walk guides at your own risk. Take precautions and if unsure – turn back!

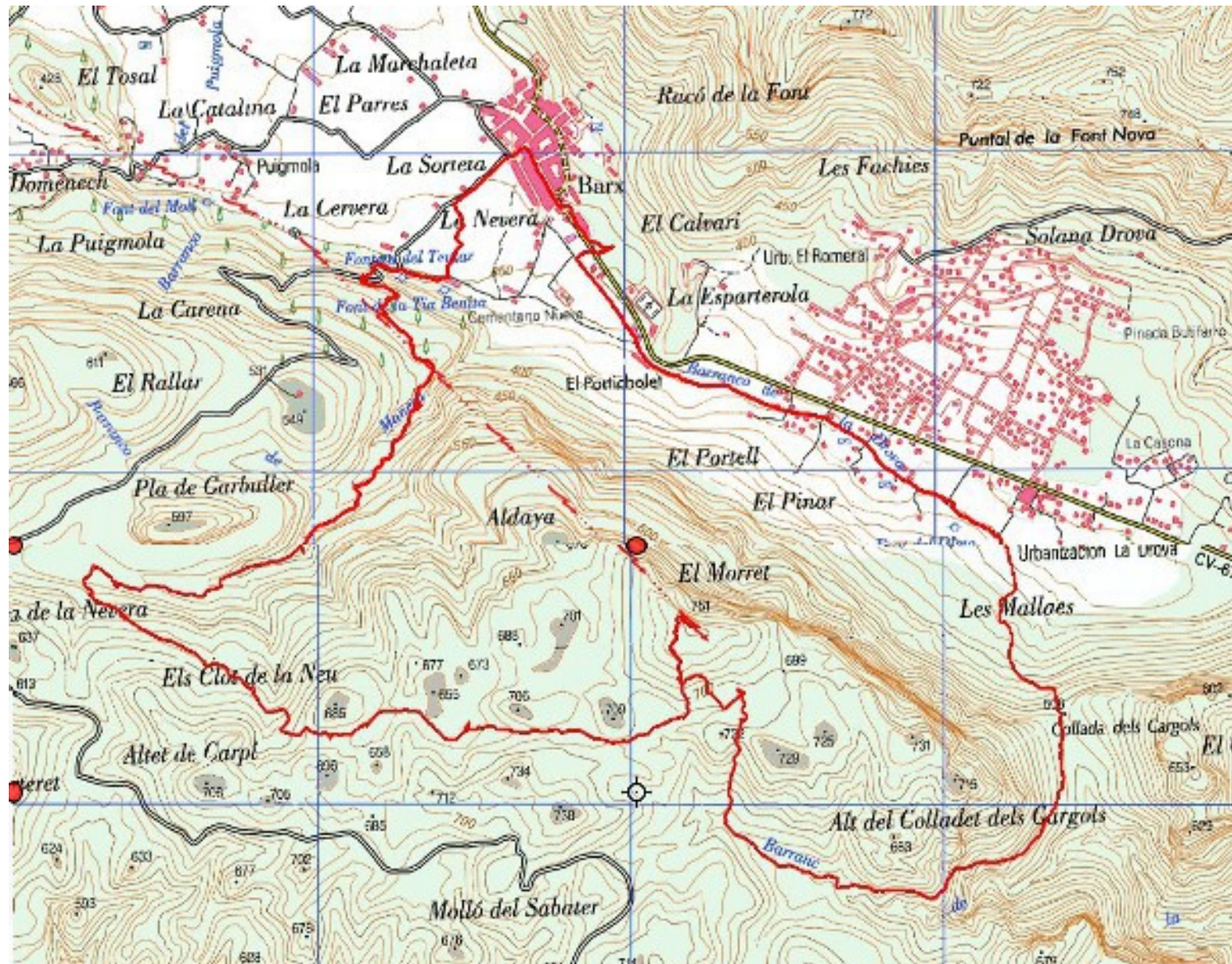
COSTA BLANCA MOUNTAIN WALKERS - WALK DESCRIPTION

<p>Cross the road and descend a rough path which cuts the corner of the hairpin bend. Follow the road to a 'T' junction with signpost (on your R is the "Font de la Benita"). Turn R signed to "Convent, Barx and Font de la Drova" You soon reach an industrial building where there is a signpost to "La Nevera". Leave the PRCV-60 and turn L along a path to reach the huge Nevera.</p> <p>Follow the pavement on the L of the Nevara to a road. Turn L to reach a 'T' junction. Turn R and follow the Cami over a bridge and into the village of Barx. Go up C' Sant Pere, turn second R along C' de Gandia, passing the plaza with cafes! Before continuing ahead to the roundabout, the car park is on the opposite side.</p> <p><small>Spanish maps included within these descriptions are provided courtesy of the Spanish IGN and remain © Instituto Geográfico Nacional</small></p>	<p>9.79km, 3hrs 05min</p> <p>10.20km, 3hr 11min</p> <p>11.12km, 3hr 22min</p>
<p>Walk Recommendations or restrictions</p>	<p>Some parts will be muddy for a few days after rain. Be aware there are lots of hidden potholes and hoyos</p>

see map below.....

Remember that you use these walk guides at your own risk. Take precautions and if unsure – turn back!

Route followed is outlined in Red



Remember that you use these walk guides at your own risk. Take precautions and if unsure – turn back!