

COSTA BLANCA MOUNTAIN WALKERS - WALK DESCRIPTION

Visit www.walksinspain.org for more walks descriptions in Spain

Walk description originally prepared by:-	Ralph Phipps
Last Updated	16 th June 2019
Title of Walk	Portillon de Benasque from Llanos de Hospital
Location of Start (include name of nearest village/town at start of description)	Benasque Hospital de Benasque hotel
Key Statistics for walk - Distance in km	11.5km
Key Statistics for walk - Ascent in m	720m (including Portillon)
Key Statistics for walk - Walking time and total completion time including any stops	4hr 6hr
Key Statistics for walk - Grade (using CBMW system)	S/B
Grid reference of start point (if known)	Lat: 42.684089, Long: 0.612481
Directions to Start	The N260 runs E-W along the central part of N Spain. From this find the A139 heading N to Benasque. Follow this road past Benasque for several kilometers to reach a turning on the R signed to Hospital de Benasque. Take this road past a large parking area on the LHS (you might have to park here and walk up to the hotel in high season) and a little way further on drop down to the parking area of the hotel on the LHS. You can normally park here with no difficulty if there is no barrier across.
Short walk description	A challenging walk with great views in all directions.
Full Walk Description	Elapsed Walking Time/Distance so far
<p>Walk across the car park in front of the hotel and exit slightly R down a track and over a bridge.</p> <p>At the far side of the bridge turn half R away from the river to reach a wall which we pass through and then turn R beside it.</p> <p>Follow this up until you thread through the wall and drop down to cross a bridge back across a smaller stream.</p> <p>Now continue ahead on the path to a junction with finger post where you continue directly ahead (with the stream on your LHS and signed to Portillon de Benasque)</p>	

Remember that you use these walk guides at your own risk. Take precautions and if unsure – turn back!

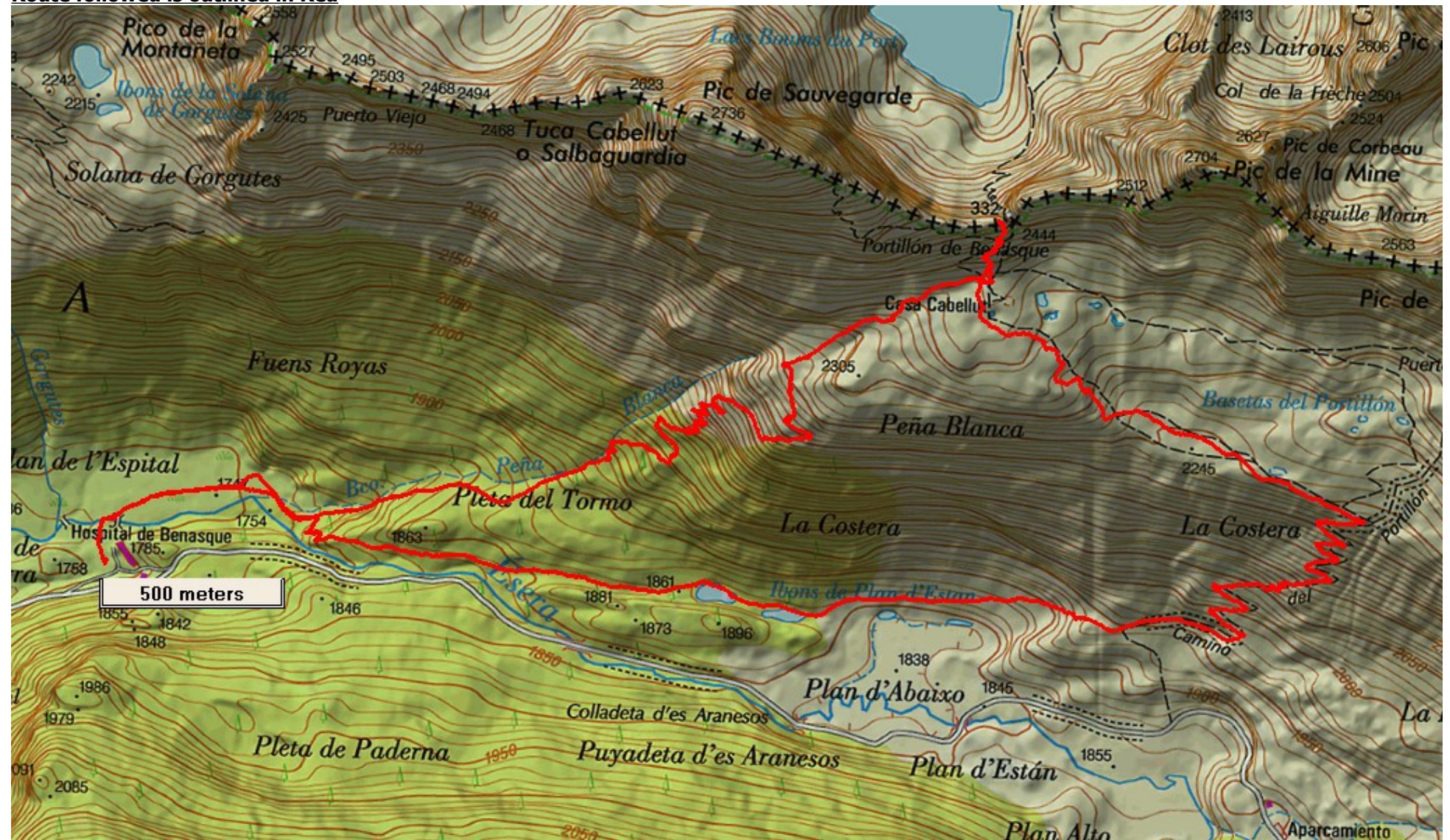
COSTA BLANCA MOUNTAIN WALKERS - WALK DESCRIPTION

ignoring the GR11 path going off uphill to the R.	660m, 11min
Follow this braided path as it ascends on the RHS of the stream and just below some slabs keep up to the R on a grassy but indistinct path soon doubling back L to reach a finger post above the slabs which points you to the Portillon (indicated as 1hr 30mins)	1.2km, 26min
The path is indistinct for a while but soon improves with parallel green stripes to indicate the route as it climbs up in zig-zags (always best to ignore the short cuts!)and after numerous twists and turns (some showing signs of the original stone paving) you reach a natural ramp aiming up to the R.	
Follow this to turn a spur to the L.....	2.8km, 1hr 10min
and now continue up through a high grassy corrie with the ridge line visible above you to soon reach a finger post with slate stone erected and indicating the distances to Luchon and Benasque.	
Here multiple paths meet.	4km, 1hr 44min
Uphill to the L the line continues with R/W markers to reach a rocky col on the R which is the Portillon. The views down into France from are spectacular although a little hemmed in by the rocky walls. (The descent on the far side is very steep)	4.3km, 1hr
Retrace your steps back down to the slate standing stone and now continue directly ahead on a clear path with R/W markers (turn R if you reach the stone and do not intend to ascend to the Portillon) descending easily to a junction with R/W poles indicating the correct route to the L.	
Follow this as it descends easily across meadows and then rises slightly to pass to the RHS of a small lake.	5.8km, 2hr 21min
Beyond this the path soon starts to descend in zig-zags with the valley floor and numerous parked cars soon visible. (Across the valley and slightly L is an ascending zig-zag track and the multiple buildings of La Renclusa refuge)	
At a finger post soon after passing below some crags keep R signed to El Hospital on the GR-T46 and shortly at a fork take care to keep L following the R/W markers.	7.6km, 3hr
Follow this path as it threads through a gap in a small ridge and then initially descend rapidly but then less so to reach a junction with finger post and sign post (!). Keep ahead now on the GR11.	
The path continues through delightful hanging pastures and then eventually descends more steeply through woodland to reach the junction you took earlier in the day.	10.3km, 3hr 45min
Now turn L, cross the bridge and retrace your steps back to the hotel.	
<small>Spanish maps included within these descriptions are provided courtesy of the Spanish IGN and remain © Instituto Geográfico Nacional</small>	
Walk Recommendations or restrictions	Can be snow on the ground until mid to late June on the higher parts of this route.

see map below.....

Remember that you use these walk guides at your own risk. Take precautions and if unsure – turn back!

Route followed is outlined in Red



Remember that you use these walk guides at your own risk. Take precautions and if unsure – turn back!