

COSTA BLANCA MOUNTAIN WALKERS - WALK DESCRIPTION

Visit www.walksinSpain.org for more walks descriptions in Spain

Walk description originally prepared by:-	Marina van den Bossche	
Last Updated	24 th September 2019	
Title of Walk	Ruta del Moli del Quisi	
Location of Start (include name of nearest village/town at start of description)	Benissa the public car park on the roundabout next to Bar Frau at the N end of the town on the N332.	
Key Statistics for walk - Distance in km	9.3	
Key Statistics for walk - Ascent in m	170	
Key Statistics for walk - Walking time and total completion time including any stops	2hr 45mins. 3 hr.	
Key Statistics for walk - Grade (using CBMW system)	E/A	
Grid reference of start point (if known)	Lat: 38.7161205 Long: 0.057003	
Directions to Start	Park on the public car park on the roundabout next to Bar Frau at the N end of the town on the N332.	
Short walk description	A delightful trail through a tranquil valley, with some woodland paths and varying views of Bernia, Lloma Largo (El Cau) monte Toix and the Penon Ifach.	
Full Walk Description	Elapsed Walking Time/Distance so far	
Walk up to the top of the car park and turn L (signed Ermita de Santa Ana), turn R to the rear of the furniture store and follow the surfaced road slowly descending to reach a junction.	960m, 14 min	
take the L fork still descending, within a few metres reach the Ermita and turn L (signed Cami del Quisi) follow onto a track and continue down to riverbed, cross the riverbed and start to wind uphill to the R (paint on rock), meander along the woodland path on the LHS of a bamboo filled riverbed to reach a junction	28 mins.	
take the L fork onto a track (green/white paint mark), continue up ignoring a R fork to reach a gravel track	30 mins.	
Continue up the L track and reach a green/white fingerpost	35 mins.	
Rise slightly to a LH bend	2.08kms.	

Remember that you use these walk guides at your own risk. Take precautions and if unsure – turn back!

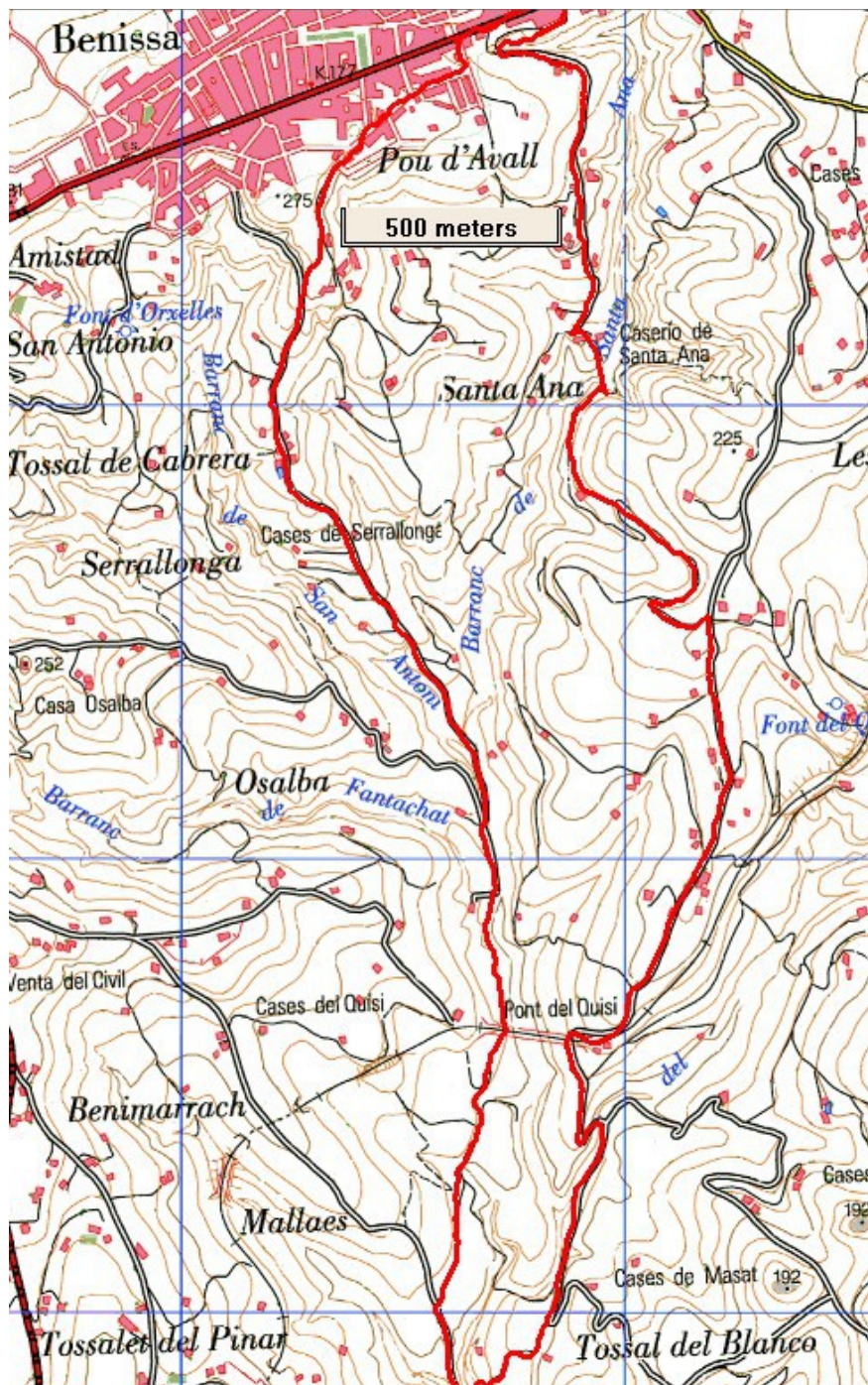
COSTA BLANCA MOUNTAIN WALKERS - WALK DESCRIPTION

Keep L and within a few metres, near a pylon, ignore the R fork but soon after turn R (signed Moli del Quisi) and continue to reach a junction.	4.05km. 1 hr.
take the L fork ascending and within a few metres take the R fork (paint and cairn) and wind down to the old mill (Moli) (an ideal banana stop !)	4.5km.1hr40min
Retrace steps to the signpost and take L fork (signed Benissa) downwards to riverbed, cross riverbed and ascend up a forest path to emerge on a grave track /road.	1hr50min
Turn R and continue to a surfaced road and reach a junction.	4.7km.
Take the R fork ascending,within a few minutes reach a junction again take the R fork onto a gravel track and continue to the next junction.	5.4km.2hr
Take the L fork, follow the track and walk under the railway bridge (green/white), continue along the LHS of river to emerge onto a surfaced road.	5.88km.2hr10min
take the RH direction alongside the river to reach a junction with a palm tree at LHS.	6.8km.2hr 15min
take the R fork still alongside the river and follow the surfaced road to a junction.	8km. 2 hr.22min
Ignore the L and continue upwards to the brow of the hill (large stone walls) and turn R and immediately see Benissa , continue forwards then turn L on calle del Doctor Crespo..... (continue straight ahead across road for an optional wander around the old town) to return to cars turn R at next junction and follow back to car park.	9.3km. 2 hr45min
<small>Spanish maps included within these descriptions are provided courtesy of the Spanish IGN and remain © Instituto Geográfico Nacional</small>	
Walk Recommendations or restrictions	None

See map below.....

Remember that you use these walk guides at your own risk. Take precautions and if unsure – turn back!

Route followed is outlined in Red



Remember that you use these walk guides at your own risk. Take precautions and if unsure – turn back!