

COSTA BLANCA MOUNTAIN WALKERS - WALK DESCRIPTION	
Visit www.walksinspain.org for more walks descriptions in Spain	
Walk description originally prepared by:-	Colin Read
Last Updated	20 th December 2019
Title of Walk	Javea circuit to the Eye of Montgo
Location of Start (include name of nearest village/town at start of description)	Javea. Small car park beside walk board at foot of the route to Ermita de Santa Llucia.
Key Statistics for walk - Distance in km	9
Key Statistics for walk - Ascent in m	590
Key Statistics for walk - Walking time and total completion time including any stops	3.5hr 5hr
Key Statistics for walk - Grade (using CBMW system)	MS/C/Scr
Grid reference of start point (if known)	Lat:- 38.792062, Long: 0.157944
Directions to Start	<p>Approaching Javea on the CV-734 cross the roundabout (with the iron sculpture on it at the edge of the town) At the next roundabout go right around to double back, signed to Cabo Sant Antoni. Then turn immediately R. Continue to the next roundabout and go straight on signed to Denia and Cabo Sant Antoni. Continue up the hill for 500 metres to a pedestrian crossing at a crossroads. Turn L into Came de Santa LLucia, which has a stone cross at its junction. Follow this narrow road for about 200m, taking the L branch at a fork, to reach a parking area with walk board, at the foot of the conical hill of the Ermita de Santa LLucia.</p> <p>From Denia on the CV-736. At the bottom of the pass in Javea go across the roundabout, signed to Alicante and Gata and in about 300 metres at a raised pedestrian crossing, beside a cross roads turn R into the junction with the stone cross (hidden) and follow the route described above.</p>
Short walk description	A varied walk with a number of points of interest and spectacular views from the eye. Despite it's brevity it has some steep and rugged terrain. After passing the Ermita Calvari, a hidden, rugged ridge offers some scrambling and leads to a civil war memorial. Easier paths go across Les Planes, then a steep ascent up to the eye. Here, time should be taken to enjoy the extensive views and to explore the cave. Return is by little frequented paths down the southern slopes and finally a visit to the Ermita de Sant Lucia. The scrambling on the ridge comprises of short, steep

Remember that you use these walk guides at your own risk. Take precautions and if unsure – turn back!

<u>COSTA BLANCA MOUNTAIN WALKERS - WALK DESCRIPTION</u>		
	sections and some is unavoidable, except at the eye where it is optional. Some paths are a little vague and also a little scratchy!	
Full Walk Description		Elapsed Walking Time/Distance so far
Follow the track out of the back of the car park, signed "Ermita Santa Lucia 1.1km". After a few hundred meters take a path on the R (with G/W cross) which cuts back R up the slope to emerge on a track beside the Ermita del Calvari.		210m 5min
Follow the track ahead a short distance and descend steps on the R to join the lower part of the Calvari on the L. Follow it down looking out for more steps to the R to reach a gateway set in a stone arch. Go through the arch and descend the road to a 'T' junction, turn L to reach the main road at a roundabout. Turn L, follow the road uphill for about 150m, until just before a left hand bend. Cross the road with care, onto Carrer Albocasser. Descend the concrete road which becomes a track and leads down to twin bridges, where two barrancos, which are divided by a ridge above, converge.		880m 15min
Cross the first bridge and step through the gap on the L, at the end of the parapet (blue and red paint marks) carefully walk along the edge of the retaining wall, to gain rock slopes at the foot of the dividing ridge. Ascend bearing R following a series of blue paint dots, they lead up the right flank, gradually stepping up to the foot of the steep rock band, follow it along until below the L/H end of a prominent orange overhanging section. Climb up at a blue dot, via steep moves, to a ledge alongside the overhang (which is probably used by climbers! Note; the blue markers end here). Move up L then R and climb the next rock step (cairns). Turn R and work up towards the next rock band, do not follow the obvious terrace leading R towards the barranco, but go L across a bancale until beneath the rock band, turn R and surmount a boulder to reach a depression through the rock and climb it.		1.12km 28min
Descend the other side for several metres to outflank vegetation and ascend to the ridge immediately. Follow it (cairns) mostly on the L, sometimes near the crest and occasionally on the right edge overlooking the barranco, with occasional bits of scrambling and passing close to a telegraph pole en-route, concentration is required to avoid losing the line. Eventually, just after a wall with a faded orange arrow painted on it, the way ahead opens out and just beyond another telegraph pole a stone cross comes into view on the R. Make for this. It is a monument to commemorate 13 men of Denia entombed in the abyss below, victims of Spains civil war!		1.59km 53min
Turn, with your back to the cross, and follow a path marked with white painted stones which winds its way in the direction of Montgo, to emerge on the main road CV-736 beside the junction with the Cap de Sant Antoni road.		1.7km 56min
Turn R onto the Cap road then in a few metres cross it at a stop sign, to gain a short path leading back L to the main road (marked Y/W). Cross the road with care onto a path directly opposite, follow it to a junction with a track. Cross this onto another footpath (Y/W cross on tree) and continue, ignore a fork off R and bear L, continue to pass a water depositary and reach a large green building.		2.4km 1hr 6min
Turn R in front of the building, to find a footpath straight ahead, which weaves through trees to junction with a track, turn R and continue to "T" junction with the main Montgo access track.		2.75km 1hr 10min

Remember that you use these walk guides at your own risk. Take precautions and if unsure – turn back!

COSTA BLANCA MOUNTAIN WALKERS - WALK DESCRIPTION

Turn L and follow the track (Y/W) at the junction with a no entry road sign, turn R. Continue, passing a Finca on your L, ignore a side track on the R with Y/W cross and at the next junction turn R. This track rises uphill to reach the walk board, under the slopes of Montgo.	3.82km 1hr 24min
Turn L onto a track (Y/W cross) which soon becomes a footpath. It rises a little before descending slightly, then goes down a small rock step to join a slightly more defined path, coming up from the left (your return route). Bear R on this (marked with green dots) for about 18 metres to a cairn, at a junction with a path going uphill on the R.	4.02km 1hr 29min
Follow this path steeply uphill (green dots), it leads onto a rocky rake, which is mildly exposed and has stunning views over the countryside below. Continue up it, then scramble up a ramp of rock to reach a resting place directly below the cave.	4.86km 1hr 55min
Option, not to be missed. Scramble up rock above to a low arch in the righthand corner, pass through it and descend across to the R to look through the eye. Return, then ascend towards the centre to access the main cave. A number of alternative lines are possible, just remember you have to get back down!	
Descend your upward route back to the cairn at the last footpath junction. Turn L and follow the green markers, ignore the rock step of your outward path and bear R heading towards a group of Fincas, but before reaching them the path junctions with a track.	6.05km 2hrs 20min
Turn R, follow the track to a "T" junction with another track. Turn R and follow the track for about 70m and just as a lefthand bend straightens out, where there is a group of several pine trees and a couple of large boulders on the R, look for a track going at a tangent off to the R.	6.62km 2hrs 27min
Follow it, in a south easterly direction for about 70m to reach a pile of stones. Leave the track (which leads to bee hives!) and go to the left of the pile of stones onto a vague path which passes through a group of several small trees. From here it is rather pathless and there are multiple options, so look out for cairns (which exist at the time of writing) and bear slightly L. The best line wanders over the crest, keeping to stonier ground, gradually turning south west, until it descends rightwards a short distance, onto a vague path which crosses the slope on a natural terrace (keeping a safe distance to the left of the bee hives, which are now in view on the terrace!). Looking outwards and down to your left you will see the conical hill with the Ermita de Santa Lucia on top, your next destination, but first!	6.93km 2hrs 37min
Turn L and follow the path until it overlooks the barranco de Santana, descend ahead slightly towards the R, until it is possible to slant down L on terraces into the back of the barranco. Continue around the opposite flank, ascending until beneath the eroded corner of a higher bancale, which has power lines passing above (Stop: Beware, bee hives on terraces above). Escape down to the R onto open pathless hillside and continue on a traverse, keeping roughly parallel to the bancale above, then rise up to reach the shoulder of the ridge ahead. Here you join a footpath, which runs along the crest.	7.27km 2hrs 50min
Turn R and follow the path south as it winds along this short ridge (Yellow dots) heading towards a pylon. Just before reaching it, the path turns sharp L then descends, to reach a surfaced road at the top of an urbanisation.	7.62km 2hrs 57min
Turn L, follow the road to a junction just before reaching the main road and turn sharp R along C de Lastres at the next "Y" junction bear L onto C Mieres and descend to a cross roads. Turn L onto Calle Ponferrada and almost immediately turn R onto a track. (From	

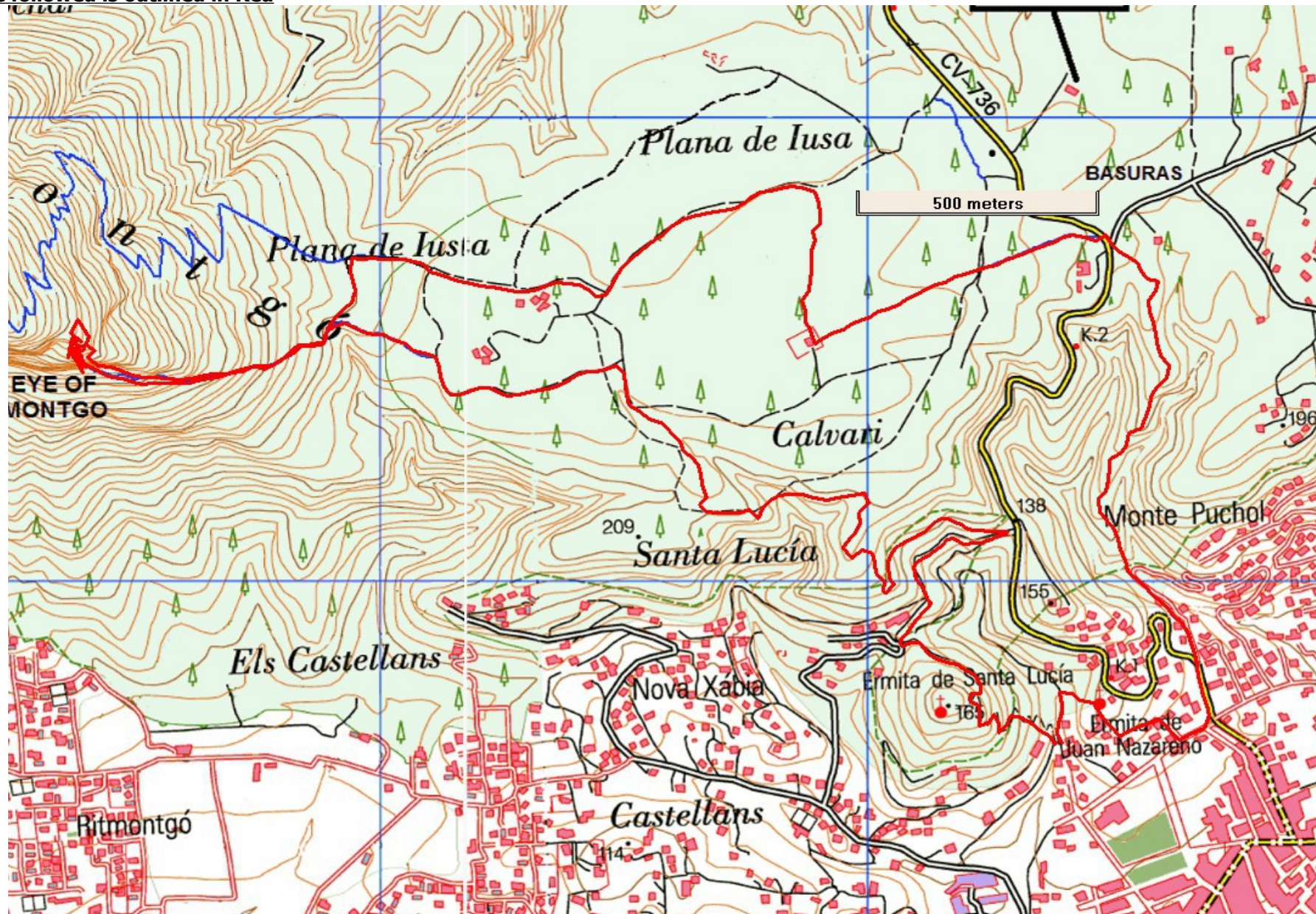
Remember that you use these walk guides at your own risk. Take precautions and if unsure – turn back!

<u>COSTA BLANCA MOUNTAIN WALKERS - WALK DESCRIPTION</u>		
here, it is also possible to continue down the road, which becomes a track and leads back to the carpark).		8.22km, 3hr 10min
Follow the track (G/W markers) to a concrete path with handrail. Ascend this path, ignoring a path on the L at signboard to reach the Ermita de Santa Llucia, at the top of the conical hill. Where you can look back towards Montgo, the Eye and your descent route!		8.59km 3hrs 16min
Return down the concrete footpath to the signboard and take the rough path on the R which leads back to the carpark.		8.97km 3hrs 25min
Walk Recommendations or restrictions	Some simple scrambling involved.	

See map below.....

Remember that you use these walk guides at your own risk. Take precautions and if unsure – turn back!

Route followed is outlined in Red



Remember that you use these walk guides at your own risk. Take precautions and if unsure – turn back!