

COSTA BLANCA MOUNTAIN WALKERS - WALK DESCRIPTION

Visit www.walksinspain.org for more walks descriptions in Spain

Walk description originally prepared by:-	Ralph Phipps
Last Updated	16 th December 2020
Title of Walk	Segaria Bolumini cave and Portet de Beniarbeig
Location of Start (include name of nearest village/town at start of description)	Beniarbeig Segaria Zona Recreativa
Key Statistics for walk - Distance in km	7.5
Key Statistics for walk - Ascent in m	445
Key Statistics for walk - Walking time and total completion time including any stops	2.5hr 3.25hr
Key Statistics for walk - Grade (using CBMW system)	MS/C
Grid reference of start point (if known)	Lat: 38.833033, Long: -0.009419
Directions to Start	Driving N through the town of Ondara leave the town and at the second roundabout turn L towards Beniarbeig. 450m along this road look out for a R turn with obscure wooden finger post signed to the Zona Recreativa. Follow this under the motorway until you reach a T- jnc. Here turn R and a few metres along turn R uphill into the vast parking area for the Zona.
Short walk description	A route through the ridge with a little awkward terrain on the demanding Segaria massif with plenty of reward with features and scenery. Generally good going.
Full Walk Description	<div> <div> <p>Walk up the concrete track past multiple signs to pass a playground on the LHS and then soon reach a junction where you turn L and quickly R now onto a footpath with Y/W markers.</p> <p>Reach a finger post where you turn L to follow the acequia – a concrete water collecting channel as it disappears to round a large boulder and immediately afterwards provides delightful walking along the flank of the mountain.</p> <p>You are forced to leave this a few times to avoid obstacles but continue until you reach a finger post signed to Cueva Bolumini up the hill to the R.</p> </div> <div> <p>Elapsed Walking Time/Distance so far</p> <p>285m, 4.5min</p> <p>485m, 9.5min</p> <p>1.6km, 28min</p> </div> </div>

Remember that you use these walk guides at your own risk. Take precautions and if unsure – turn back!

COSTA BLANCA MOUNTAIN WALKERS - WALK DESCRIPTION

<p>Now follow this path uphill with regular yellow dots and occasional Y/W markers. Although the path is very braided where people have taken a direct route, the marked route is always the easiest way up.</p> <p>After some 20 minutes of toil you reach a set of finger posts near the entrance to the cave. To explore this continue past the first post and on up to the second from where you can gain access.</p>	2.2km, 45min
<p>To continue the route drop back down to the first post and now turn L immediately passing a second hole (Avenç) on your LHS and continuing along the marked line which requires concentration.</p> <p>In general the best line continues more or less level for a while aiming to pass a rock buttress above you before it can turn up to the ridge.</p>	
<p>The markers are intermittent here so take care and soon find the path turning much more steeply uphill towards a breach in the ridge.</p> <p>Persevere across tricky sections to arrive at the notch in the ridge.....</p> <p>Descend with chains</p>	2.4km, 52min
<p>At jnc continue ahead (no sign)</p>	2.9km, 1hr 3min
<p>Arrive junction turn R (Mozarabic ruins on LHS)</p>	3.1km, 1hr 10min
<p>Up gully to cross to L and walk along open ridge. Reach masts.</p>	3.6km, 1hr 21min
<p>Descend down concrete road and turn L at post before pic-nic tables following the Y/W footpath steeply down.</p>	3.8km, 1hr 24min
<p>Arrive at a col and at finger post with a trough and well turn L.</p>	4.3km, 1hr 38min
<p>At cairn a few metres forward continue R.</p> <p>Follow main track down ignoring side turnings until just past an enormous water deposito down on your LHS where you turn L descending instead of curving R and level.</p>	
<p>At the bottom of the mozarabic path you reach a road where you can either turn L or continue straight ahead. Go ahead.</p>	5.6km, 2hr 2min
<p>At a junction turn R.....</p> <p>and quickly step up onto the terrace on the L and walk along inside the ruined water channel. When you reach a wall descending in front of you turn L and walk along at the edge of the orange plantation and descend a little to continue and reach a road.</p>	5.8km, 2hr 3min
<p>Here turn L and follow this road as it ascends easily.</p>	6km, 2hr 5min
<p>At the end of this there are some gates ahead of you but the G/W path continues to the L.</p> <p>Follow this as it zigs to the R and reaches a junction where you continue ahead with a G/W <u>cross</u> as your marker – now ignoring the G/W path which goes off to the L.</p>	6.4km, 2hr 14min
<p>When you reach a road turn L and follow this as it doubles back to the R and descends</p>	

Remember that you use these walk guides at your own risk. Take precautions and if unsure – turn back!

COSTA BLANCA MOUNTAIN WALKERS - WALK DESCRIPTION

to the entrance track to your car park.

Spanish maps included within these descriptions are provided courtesy of the Spanish IGN and remain © Instituto Geográfico Nacional

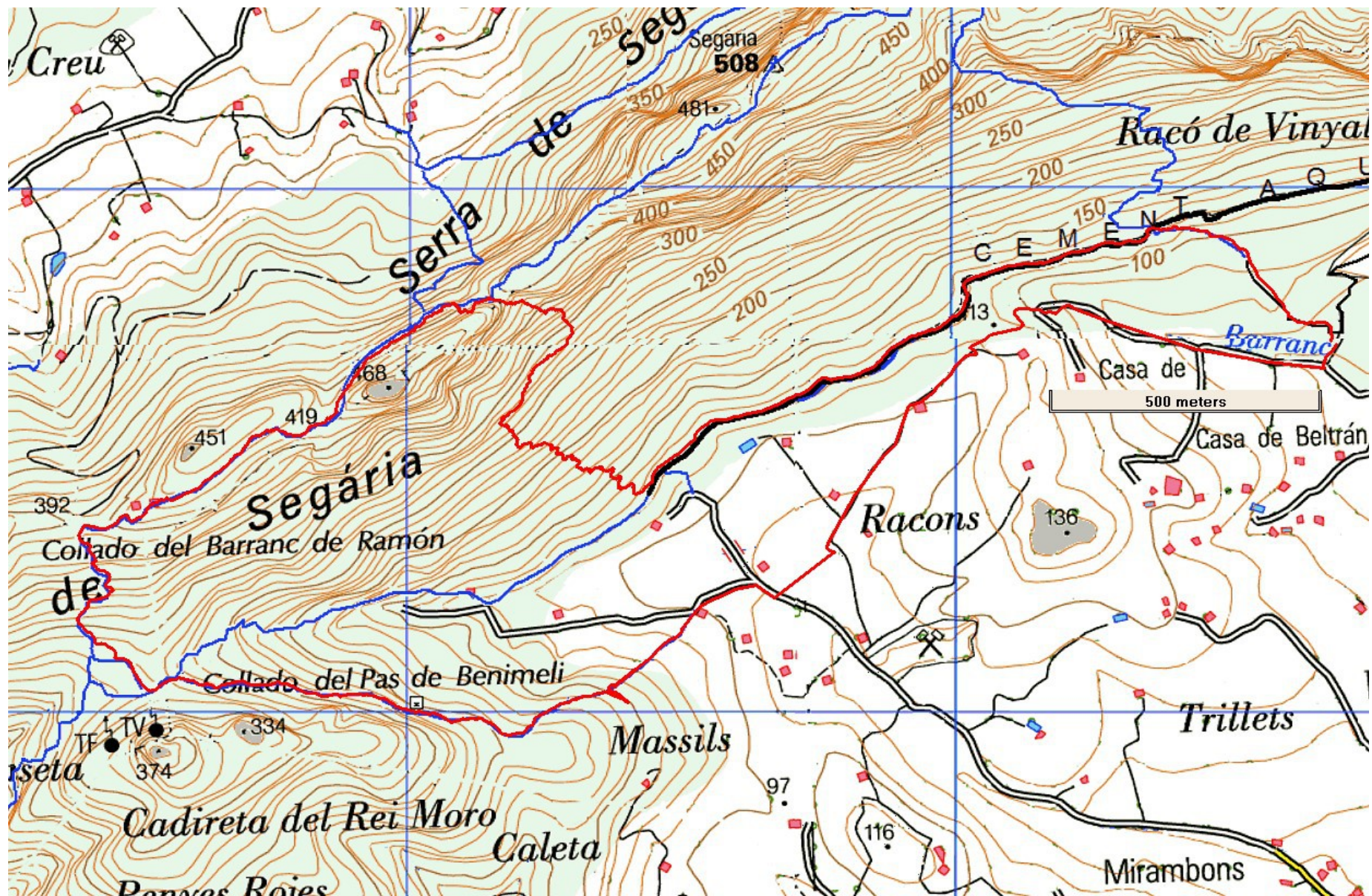
Walk Recommendations or restrictions

Some tricky rock sections on the ascent where use of hands can be helpful.

see map below.....

Remember that you use these walk guides at your own risk. Take precautions and if unsure – turn back!

Route followed is outlined in Red



Remember that you use these walk guides at your own risk. Take precautions and if unsure – turn back!