

## **COSTA BLANCA MOUNTAIN WALKERS - WALK DESCRIPTION**

Visit [www.walksinspain.org](http://www.walksinspain.org) for more walks descriptions in Spain

<b>Walk description originally prepared by:-</b>	Mary Gough and Jean Russell
<b>Last Updated</b>	28 <sup>th</sup> .June.2021
<b>Title of Walk</b>	Calpe Countryside Circuit
<b>Location of Start (include name of nearest village/town at start of description)</b>	Calpe
<b>Key Statistics for walk - Distance in km</b>	16.7 km
<b>Key Statistics for walk - Ascent in m</b>	420 mtr
<b>Key Statistics for walk - Walking time and total completion time including any stops</b>	5 hr. 4 hr 15min
<b>Key Statistics for walk - Grade (using CBMW system)</b>	S / B
<b>Grid reference of start point (if known)</b>	Lat. 38.64810    Long. 0.05009
<b>Directions to Start</b>	Calpe Tennis Club – coming into Calpe at 'Calpe Sur ' from N332 turn L at Mas Y Mas Centro Commercial roundabout ,go across next roundabout and park at LHS near Tennis Club or opposite .
<b>Short walk description</b>	This new route starts at Calpe tennis Club then takes us up to Ermita de San Juan then follows part of ' Pedro paseo ' route to Quisi watermill before returning to Calpe on an alternative route .Varied views to coast and mountains .
<b>Full Walk Description</b>	<b>Elapsed Walking Time/Distance so far</b>
Walk along the road ( away from Calpe town ) ,cross directly over a roundabout and continue until approaching a metal sided bridge .	640 mtr. 8min
Immediately at LHS of bridge drop down onto a path , continue and pass through an olive terrace to reach a junction	932mtr.
Turn R and within a few metres cross a riverbed ,rise up and within a few metres turn L near a telegraph pole ( Y/W paint ) the path then splits Take L fork and within a few metres trend R to reach a surfaced camino	1.26km. 16 min 1.36 km
Go directly across and onto a path ,continue and pass white houses – after the last house on LHS near a large pylon	1.48km.20min

**Remember that you use these walk guides at your own risk. Take precautions and if unsure – turn back!**

## **COSTA BLANCA MOUNTAIN WALKERS - WALK DESCRIPTION**

Take L fork onto a track and continue to reach a metal fence and gateway ,turn immediately R and begin to rise to emerge at a surfaced road	1.86 km
Go directly across and continue on a path ,trend L and follow to a junction	2.1km. 27min
Ignore 1 <sup>st</sup> .R fork and take 2 <sup>nd</sup> exit (cairn),within a few metres reach a ruin and turn L, turn L and meet a track and go directly across (cairn), ignore the next 2 R forks and continue to a junction	2.55km. 33min
Turn R (cairn) slowly ascending ,after a few mtrs (10) rise up a wall and trend R ,pass to RHS of a 'shepherd and flock' sculpture and reach a large pine tree	2.81km. 38min
Take feint path L to emerge at a surfaced road , turn L to a junction ,take L turn then ignore next L turn ,continue and pass ' Villa 15i ' continue forwards to a junction	3.45km.46min
Turn L then first R and continue to reach Ermita de San Jaun , walk across to far RHS of a picnic area and onto a path ( Y/W paint) ,continue across an open area to a signpost at surfaced road ,take L direction ' Creu de Cometa ' ,continue for a few metres	3.81km.
Turn R onto a path ,turn R onto a path then level off on an old terrace	3.93km.
Trend R rising up and continue to another signpost	4.6km.1hr5m
Ignore L fork and stay on main track to reach a junction	4.79km.1hr6m
Turn L onto a path ,within a few metres reach a junction and take R fork and continue to reach a surfaced road	5.04km
Turn L , soon after and before a speed hump turn L onto a feint path ,continue to reach an open area with excellent views down to Calpe coast	5.56km.1hr18m
Take R fork with a ruin above,stay on the path and reach a large metal gateway	5.83km.1hr30m
Walk through and ignore the first L turn ( signpost ) and continue forwards on track, after 40 mtrs (6.23km.) ignore a R fork ,rise up through trees to meet a junction	6.67km.
Take L fork (cairns ) to reach a junction	6.96km.1hr42m
Take R fork and continue to next junction ( blue metal marker )	7.34km.1hr48m
Take R fork ,within a few metres arrive at another junction take R path (cairn ),soon after at an open area with old wall to RHS trend L (cairn) onto a path and continue to reach a junction	7.55km.1hr52m
Turn L past a metal post and chain ,within a few meters ignore a L fork and L turns onto terraces ,navigate around RHS of terraces (grassy track) , the track rises up to the L and spirals up to emerge on a surfaced camino with large stone wall in front	8.22km.2hrs
Turn R and stay on camino ,trend L and pass a driveway ( Finca Montana ) and reach 'Villa 54a'	9.09km2hr12m
Trend R off the camino and continue to reach a well	9.69km2hr22m
Take R fork and continue to reacha semi surfaced camino	9.9km.

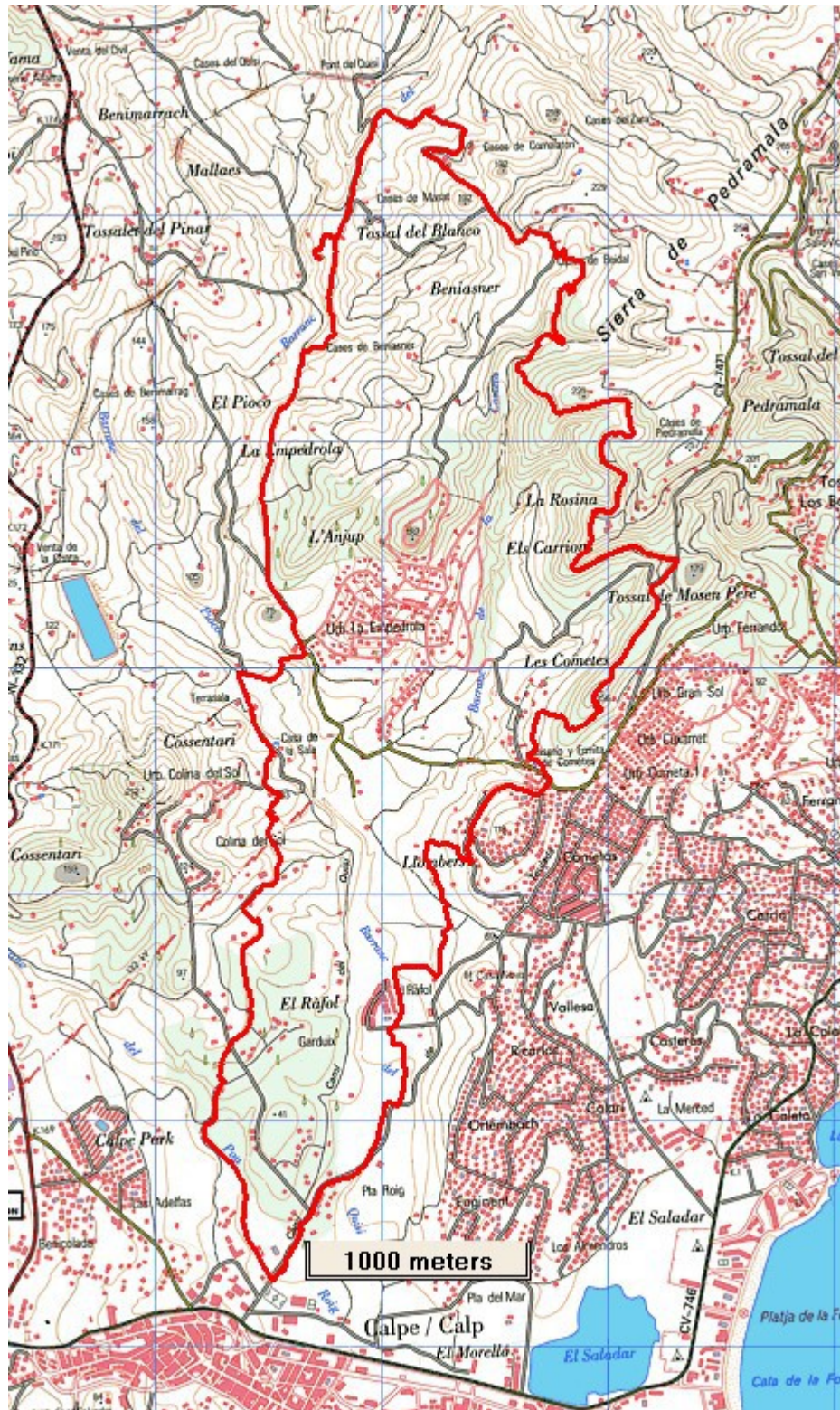
**Remember that you use these walk guides at your own risk. Take precautions and if unsure – turn back!**

<b><u>COSTA BLANCA MOUNTAIN WALKERS - WALK DESCRIPTION</u></b>	
Turn L( white/green paint on tree) continue and ignore a R fork ,follow sign 'Casa Quisi' within a few mtrs. reach a junction	10.4km.
Turn R to visit ' Mol de Quisi' a restored watermill then retrace steps to junction	10.8km
Turn R on track ,soon after (11.2km) ignore a L fork and continue to a junction	11.4km.2hr50m
Turn L,soon after trend R and drop down through bamboo and continue to emerge at a surfaced road lined with street lights	12.2km.3hr
Turn R to reach a junction	12.7km3hr8min
Take R fork to reach a signpost 'Casa de Terra Sala / Casa del Coco ', turn R and pass to LHS of a villa and drop onto a path and continue to drop down through bamboo and cross a riverbed ,rise up and meet a track	13.1km.
Turn R (signed 'Casa del Coco ')after 20 metres meet a junction and turn L and continue following signs for 'Casa del Coco" , soon after reach a pylon (blue/purple paint marker )	13.65km.
Turn L and reach a surfaced camino ,take direction R ( Casa del Coco) ,walk to RHS of 'Casa de Terra Sala' and at far side spiral down a rough path to reach a terrace	14.1km.
Walk round LH perimeter of olive terrace ,at far side rise up to emerge on a surfaced camino ,continue following signs ' Cas del Coco ' and reach a junction	14.6km3hr50m
Turn L now following blue sign for 'Casa del Coco' after 400 metres drop onto a track and turn R near a concrete 'block wall ' within a few metres meet a surfaced road ,go directly across and continue to a wall signed ' Residence Bel Air ' ,go directly forwards and into trees (blue paint marker) and follow to reach ' Casa del Coco '	15.5km.4hr4min
Turn R at signpost 'El Cepellar/zona Acampado',after 20 metres ignore a track at RHS and continue to pass a colourful school building to reach a junction on a surfaced road	16.2km4hr 9min
Go directly across and continue alongside riverbed to junction and turn L to car park	
<small>Spanish maps included within these descriptions are provided courtesy of the Spanish IGN and remain © Instituto Geográfico Nacional</small>	
<b>Walk Recommendations or restrictions</b>	None

see map below.....

**Remember that you use these walk guides at your own risk. Take precautions and if unsure – turn back!**

**Route followed is outlined in Red**



**Remember that you use these walk guides at your own risk. Take precautions and if unsure – turn back!**