

COSTA BLANCA MOUNTAIN WALKERS - WALK DESCRIPTION

Visit www.walksinSpain.org for more walks descriptions in Spain

Walk description originally prepared by:-	Mary Gough
Last Updated	29/03/21
Title of Walk	Castell de l'Ocaive, L'Era de Raboses, Font Coberta circuit.
Location of Start (include name of nearest village/town at start of description)	Pedreguer Park at Ermita San Blai.
Key Statistics for walk - Distance in km	11 km
Key Statistics for walk - Ascent in m	590m
Key Statistics for walk - Walking time and total completion time including any stops	3hr 50min 4hr 40min
Key Statistics for walk - Grade (using CBMW system)	MS/C
Grid reference of start point (if known)	Lat. 38.79072 Long. 0.033728
Directions to Start	Park at Ermita San Blai.CV720 Alcalali to Pedreguer road at Tourist sign to Ermita at edge of village, turn into Avenida de Maria Lopez and go to far end of road (over several junctions) and then turn R to park near Ermita beside open ground.
Short walk description	Begin along a path beside an old waterpipe (asequia),enjoy some all round views from mostly well marked and preserved paths and tracks, an optional visit up to the restored castle, a large era and several fonts ' en route ' and a downhill return.
Full Walk Description	Elapsed Walking Time/Distance so far
Walk up the road to the PRCV signpost and turn R (PR53, Castell de l'Ocaive) and pass through the 'stations of the cross' at RHS of Ermita, at the far end trend R onto a path (Y/W) continue alongside the old waterpipe (acequia) until the pipe goes under a concrete ramp.	900mtrs.
Trend L (Y/W) and continue to reach an old stone bridge spanning a barranco, cross over to the cave and picnic area with PR signpost.	1.9km 30 min
Turn L at sign (Font de l'Ocaive/Castell d'Aixa) then almost immediately R and within a few minutes reach a junction	2.12km 34min

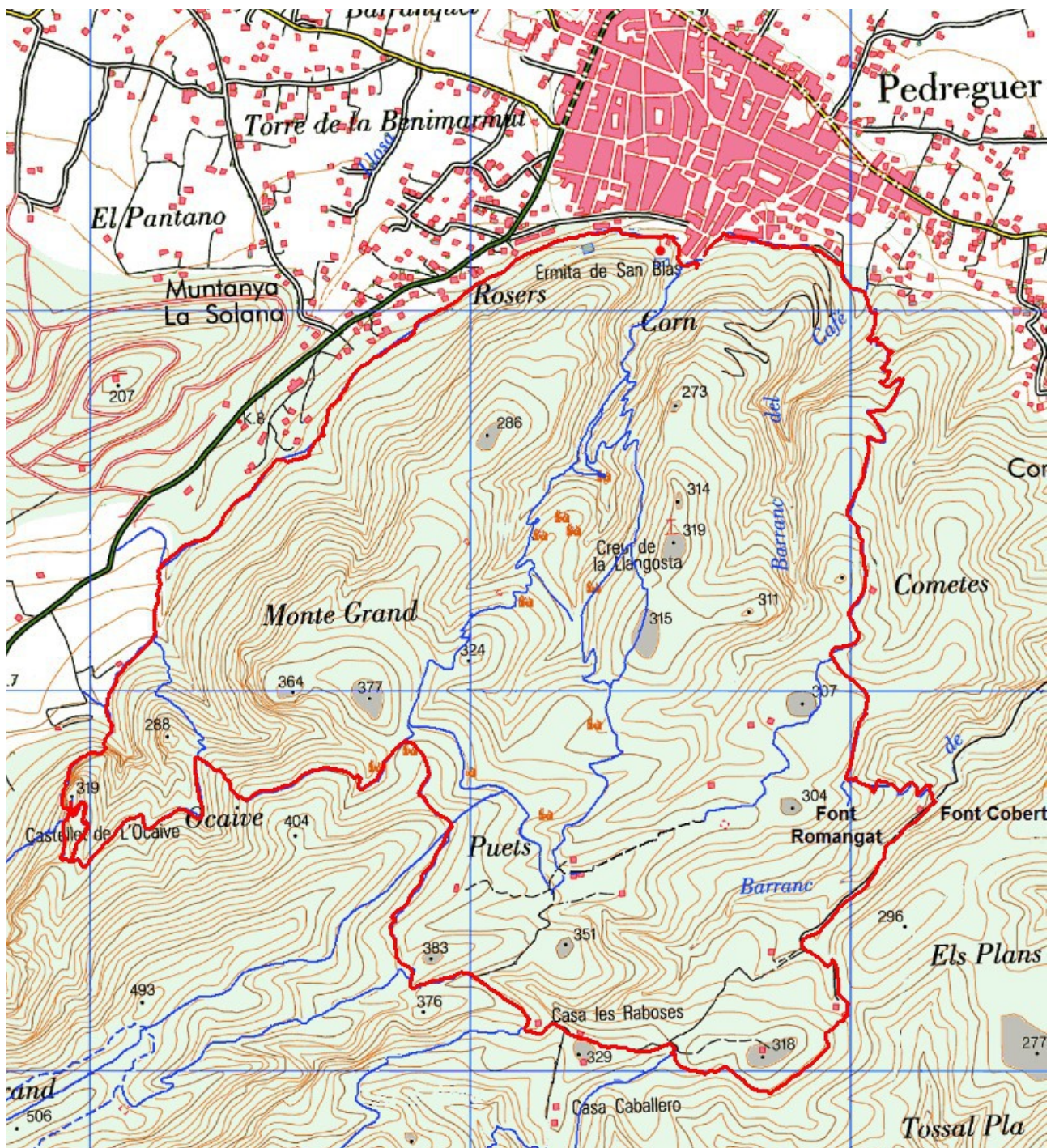
Remember that you use these walk guides at your own risk. Take precautions and if unsure – turn back!

COSTA BLANCA MOUNTAIN WALKERS - WALK DESCRIPTION

Turn R (PR53.Font l'Ocaive .Y/W) and continue ascending to arrive at the base of a rocky mount.	2.9km 56min
Follow the signed route to visit the castle then retrace steps to signpost.	3.4km 1hr15m
Take L fork (Pedreguer .PR53.4) and continue to reach the next signpost on a col	4.06km1h32min
Take R fork (Pedreguer/Font d'Aixa) and continue to next junction	4.8km 1h48min
Take L direction (Castle d'Aixa/Font d'Aixa.PR53.2/3), continue to reach a junction	5.12km1hr55m
Take L fork (Font d'Aixa), within a few metres ignore a path to L (down terraces.Y/W cross) and continue ahead on Y/W, level off near a small cultivated area	5.6km 2hr 3min
Ignore a feint path at RHS and continue to emerge on a surfaced road	5.8km
Turn R (signed Font Coberta/Font d'Aixa.PR53.1), within a few metres ignore a small R fork and continue on road to pass to RHS of a casita then to L of a picnic area (Pla de l'Era de Raboses) to reach a junction	6.45km 2hr20m
Turn R (Fontd'Aixa) BUT almost immediately L (cairns) on a path which passes behind a small casita and turns down at far side onto a feint path trending L and undulating across terraces to reach a forested area	6.8km
Drop R off the terrace (cairn) then trend L (cairns) through the trees to reach more terraces	6.98km.2h36min
Walk directly across terrace to far side and turn R onto a path and descend LH edge of terraces to reach a casita with outdoor kitchen facilities (tap and sink)	7.1km 2hr40m
Turn L and walk onto a partially concreted track which contours down to emerge at a surfaced road near Finca La Teulera	7.36km 2hr45m
Turn R (Y/W) and continue downhill to reach Font Coberta	7.9km 2hr56m
Turn L at signpost onto a path and begin to ascend, soon after ignore L fork (Font Romegat / optional visit !) and continue to reach a junction	8.65km 3hr15m
Go directly across (sign Pedreguer.PR53), continue spirally descending, ignore a R fork (Y/W cross)	9.85km 3hr38m
Continue down main path to reach a BBQ /recreation area	10.1km 3hr42m
Walk directly across and turn R at signpost (Ermita San Blai), within a few metres turn L onto a track which soon narrows and leads behind village houses to emerge at tarmac	10.4km 3hr46m
Turn L to junction and L again to car park	
<small>Spanish maps included within these descriptions are provided courtesy of the Spanish IGN and remain © Instituto Geográfico Nacional</small>	
Walk Recommendations or restrictions	Walk description visits Ocaive castle, extra time will be needed to visit any of the Fonts.

Remember that you use these walk guides at your own risk. Take precautions and if unsure – turn back!

Route followed is outlined in Red



Remember that you use these walk guides at your own risk. Take precautions and if unsure – turn back!