

COSTA BLANCA MOUNTAIN WALKERS - WALK DESCRIPTION

Visit www.walksinspain.org for more walks descriptions in Spain

Walk description originally prepared by:-	Mary Gough and Jean Russell
Last Updated	21 June . 2021
Title of Walk	Lleus Loop
Location of Start (include name of nearest village/town at start of description)	Benissa
Key Statistics for walk - Distance in km	13.3
Key Statistics for walk - Ascent in m	465
Key Statistics for walk - Walking time and total completion time including any stops	3 hr 35min 4 hr 11 min
Key Statistics for walk - Grade (using CBMW system)	MS / B
Grid reference of start point (if known)	Lat. 38.681641 Long. 0.037009
Directions to Start	N332 between Calpe and Benissa. From Calpe direction just after Km172 take permitted turn L. From Benissa just after Km 173 turn R into side road and park on rough ground at LHS.
Short walk description	At lower end of MS grade, this new circular route combines tracks on lower part of Olta to arrive at Lleus Ermita and from there tracks in the little walked Tossal de la Rapita and Ferandet area. Good views and varied paths and tracks.
Full Walk Description	Elapsed Walking Time/Distance so far
Turn L down track and walk downhill to reach a junction.	440mtrs. 6 min
Go directly across junction, almost immediately ignore a R fork, continue to ascend, ignore a L fork (670mtrs) to reach a junction.	820mtr. 14min
Take L fork and continue to emerge out of trees in front of a house.	1.5km. 18min
Turn L on track to end of house wall then go forwards onto a path through trees (cairn) and continue to reach tarmac.	1.67km
Take 2 nd R fork (signed 'Ferandet ' - Biomagnetico) and continue to pass a small 'layby' at LHS of a man made stonewall.	1.85km. 22min

Remember that you use these walk guides at your own risk. Take precautions and if unsure – turn back!

COSTA BLANCA MOUNTAIN WALKERS - WALK DESCRIPTION

Turn L down track, after 12mtrs ignore track to LHS and continue down to reach a riverbed.	2.25km. 30min
Turn R and within a few metres climb out on LHS onto a surfaced camino, turn R to the next junction.	2.6km.
Take L fork to reach a house 'Casa Mia' Ivars Perez, 4B, turn off camino onto a track and almost immediately trend L on a path, crest the hill onto a track and turn L to see a house with metal gates.	2.96km. 45 min
At RHS of gates turn R onto a path, reach a terrace and take path through trees to reach a stone wall.	3.45km. 55min
Continue L to emerge on a surfaced road and turn R near 'Mi Casita', within a few metres turn L up hillside (cairn, turquoise paint) and continue to reach an open area near a house.	4km. 1Hr 8min
Pass to RHS of house then L at far RH corner, almost immediately turn R up a terrace onto a path (turquoise arrow), trend L to reach a track to turn R, level off on an open area – walk directly across and take path at RHS and continue to reach a LH bend.	4.8km1hr 33min
Take path at RHS (cairn) and continue to reach a surfaced road.	5.03km.1hr40min
Turn R, road turns to track and within a few metres take path at LHS to reach a ruin.	5.21km.1hr44min
Turn L, ignore any paths L or R and continue to reach a partially surfaced track.	5.85km.1hr58min
Turn R (red paint on tree), continue to reach a wooden cycle post near a large pylon.	6.24km.2hr 2min
Turn R to reach a junction.	6.6km
Take L fork and continue until track turns to surface road.	7.04km.2hr10min
Turn L and reach valley bottom, continue forwards ignoring any R or L forks to reach a junction, trend L (signed 'Casa del Maco , cami Lleus) and continue to reach the entrance of the Ermita.	7.69km.2hr18min
Turn R onto a track below wall with fenced top, continue to reach tarmac.	8.08km.2hr23min
Turn R and continue to reach a well on RHS of road.	8.3km
Take R fork and pass a house with a long stone perimeter wall.	9.14km.2hr36min
Turn L onto track and continue to reach a junction.	9.68km.2hr42min
Turn R to follow to next junction.	9.9km
Turn L and continue and pass a villa with grey stone /slate wall.	10.5km.2hr52min
Turn R onto track, pass an abandoned farmhouse walk to RHS of a large pine tree and trend R to reach a junction.	10.7km
Ignore a R fork and follow track which soon trends R (cairn), ignore the next R fork.	11.3km.3hr8min
Within a few metres walk directly across a junction (cairn, orange paint) then almost	

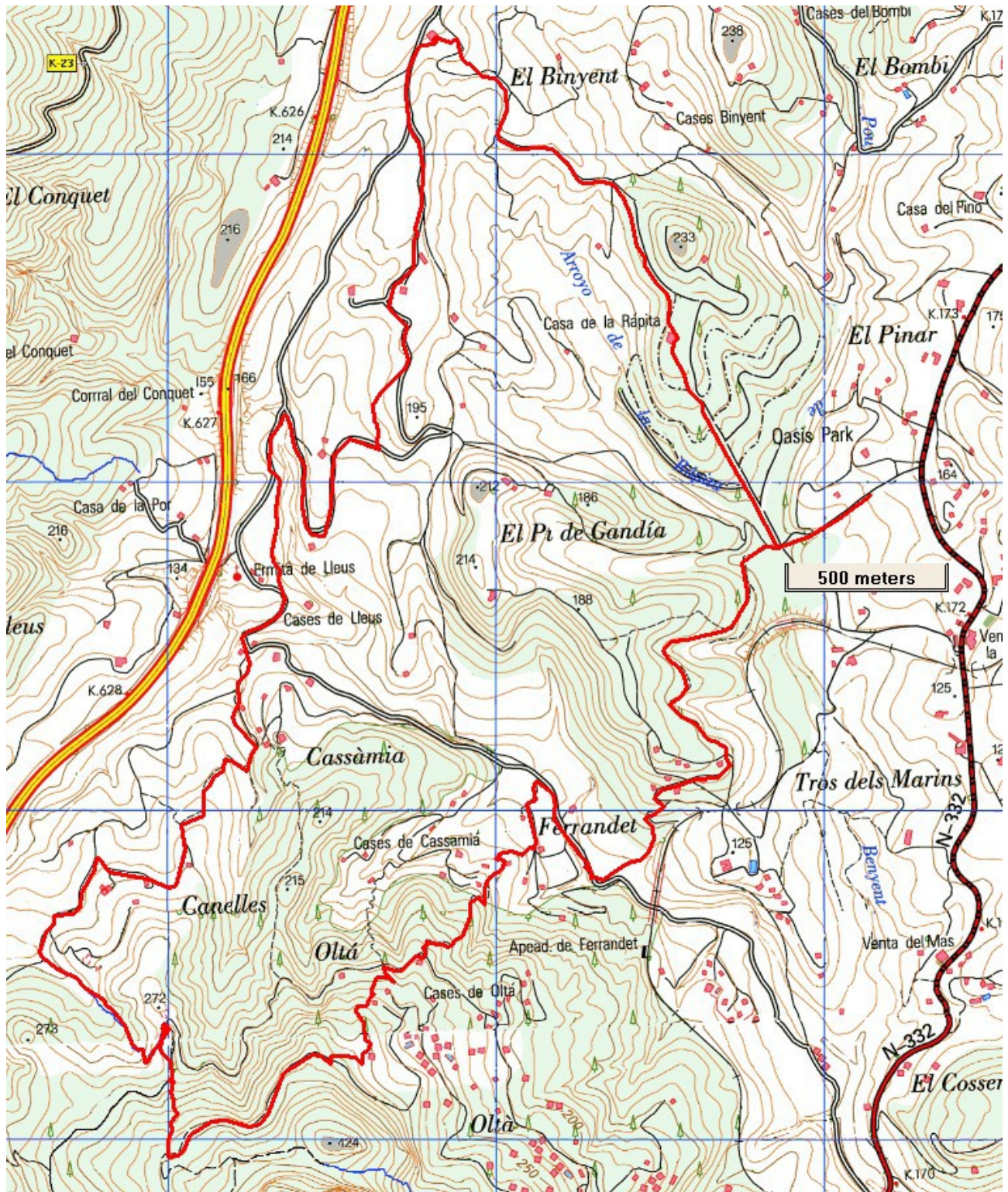
Remember that you use these walk guides at your own risk. Take precautions and if unsure – turn back!

<u>COSTA BLANCA MOUNTAIN WALKERS - WALK DESCRIPTION</u>	
immediately take R fork (cairns)continue and walk through a boulder strewn path, after a couple of metres turn L up bankside and emerge on a track, turn R then ignore L fork	11.9km.
Begin to ascend, ignore a R fork.	12.2km
Continue to a junction (visited earlier)	12.7km3hr28min
Turn L to return up to car park.	
<small>Spanish maps included within these descriptions are provided courtesy of the Spanish IGN and remain © Instituto Geográfico Nacional</small>	
Walk Recommendations or restrictions	GPS helpful and reasonable sense of navigation skill

see map below.....

Remember that you use these walk guides at your own risk. Take precautions and if unsure – turn back!

Route followed is outlined in Red



Remember that you use these walk guides at your own risk. Take precautions and if unsure – turn back!