

COSTA BLANCA MOUNTAIN WALKERS - WALK DESCRIPTION

Visit www.walksinspain.org for more walks descriptions in Spain

Walk description originally prepared by:-	Ralph Phipps
Last Updated	28 th May 2021
Title of Walk	Forna circuit
Location of Start (include name of nearest village/town at start of description)	Forna Car park on LHS at entrance to village.
Key Statistics for walk - Distance in km	8.3
Key Statistics for walk - Ascent in m	450
Key Statistics for walk - Walking time and total completion time including any stops	3hr 4hr
Key Statistics for walk - Grade (using CBMW system)	MS/B
Grid reference of start point (if known)	Lat: 38.873406, Long: -0.172272
Directions to Start	From the coast road and motorway find the CV700 going to Pego. Follow this through Pego and then through Adsubia and soon after look for the CV717 on the RHS towards Forna. Follow this road to reach the car park on the LHS just at the entrance to the village.
Short walk description	After the picturesque village of Forna we climb steeply up through woodland on a footpath followed by a wide forest track which leads to a steeply descending path (care needed) before taking more wooded paths with occasional wide ranging views which lead back to the village.
Full Walk Description	<div> <div> <p>Leave the car park and walk through the village following the "mock" cobbled route to reach a RH turn into the square with a pretty Finca on the RHS and just ahead the Nautilus Restaurant.</p> <p>Keep ahead and slightly L to follow Calle Fuente Forna and reach either of 2 streets leading up L – the first in front of a delightful set of white houses and the second a narrow "alley". Turn up either.</p> <p>At the top of the first street snake round R and then L to find a track with Y/W going uphill.</p> </div> <div> <p>Elapsed Walking Time/Distance so far</p> <p>235m, 3min</p> <p>370m, 5min</p> </div> </div>

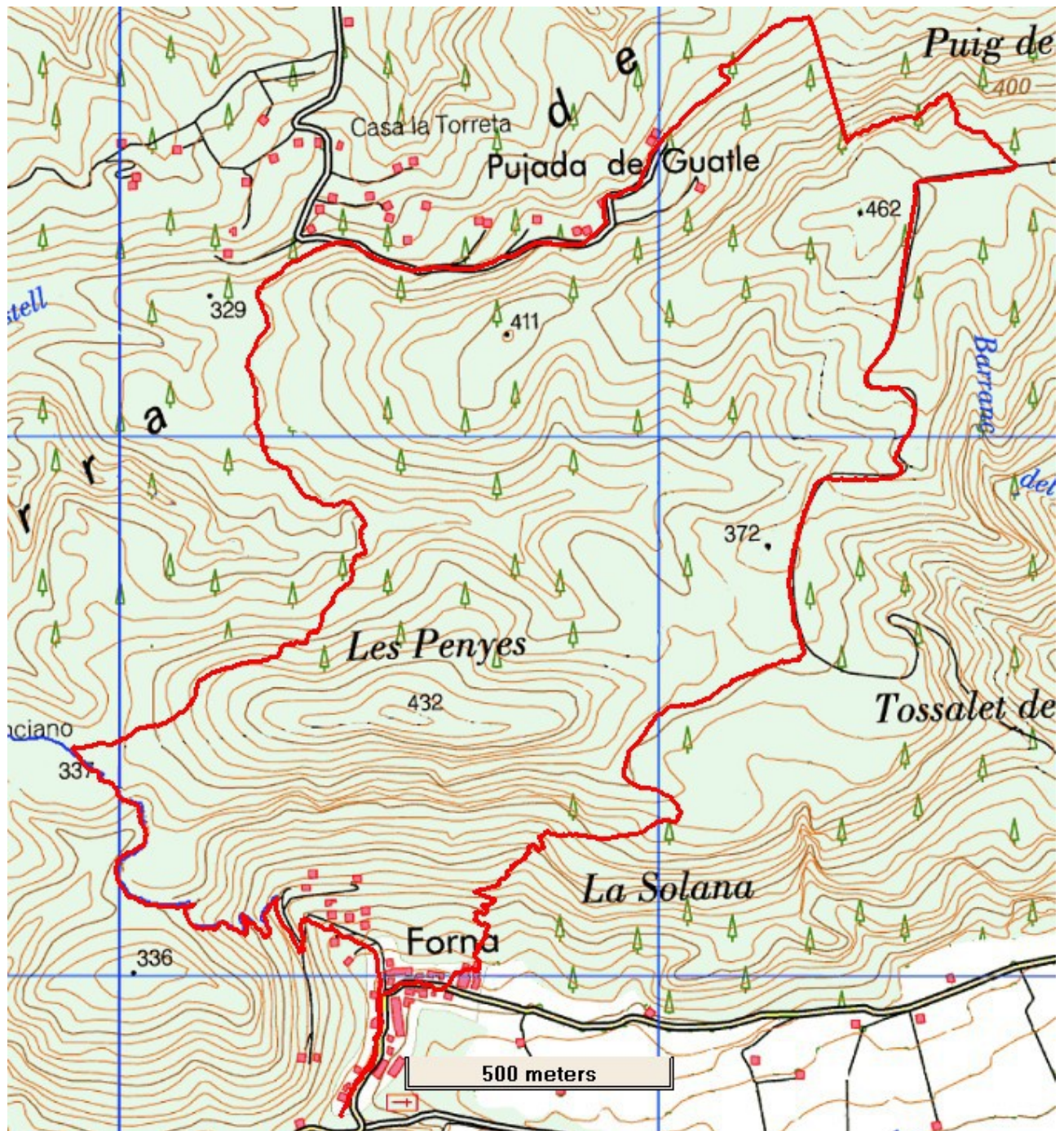
Remember that you use these walk guides at your own risk. Take precautions and if unsure – turn back!

COSTA BLANCA MOUNTAIN WALKERS - WALK DESCRIPTION

<p>This quickly becomes a slightly overgrown footpath which initially climbs steeply uphill before finding an easier set of zig-zags moving up generally R to finally reach a T-jnc with cairn. Here turn L still with Y/W markers.</p>	1.3km, 29min
<p>Follow this more gently uphill now to emerge on a steadily improving and level track with some fallen tree obstructions to reach a junction with a mighty forest track where we turn L.</p>	1.8km, 40min
<p>Follow this steadily uphill including a concrete section before starting to descend to reach a T-jnc with a smaller track off on your L. Turn R following the better track.</p>	3km, 58min
<p>190m further along this watch carefully for a cairned footpath with Y/W doubling back on the LHS just in front of a feint track leading to hives.</p>	3.2km, 1hr
<p>Follow the footpath soon descending steeply and awkwardly before a level and rising section to avoid crags. Looking down to the R you can see your footpath continuing through the trees ahead.</p>	
<p>Beyond the craggy section the path again descends steeply and awkwardly before reaching a rock with the legend "El Pla de los Frares".</p>	
<p>At a section of open ground on your LHS look out for a footpath cross roads with a path on the RHS with Y/W markers and a path on your L also. Take the L path.</p>	3.9km, 1hr 12min
<p>Follow this easily through woodland to emerge up a steep bank onto a track where we turn L uphill.</p>	4.1km, 1hr 15min
<p>Reach a large pond with erected boulder wall behind it and walk level in front of it to soon reach a track joining you from the LHS and continue ahead soon on concrete.</p>	
<p>Walk ahead and around some gates to climb steeply and briefly to reach a junction where you turn R with a high white wall on your LHS.</p>	4.5km, 1hr 22min
<p>Now descend gently on this track to find a track leading off uphill on the LHS to pass some boulders with Y/W after which it becomes a footpath.</p>	5km, 1hr 30min
<p>Follow this uphill to swing steadily L and drop into a generally dry barranco which we cross and then start to ascend steeply across rocky terrain.</p>	
<p>Soon start to descend again with the slope easing all the time to arrive at 2 fingerposts where we turn L towards Forna.</p>	6.7km, 2hr 6min
<p>This path shows signs of cobbling in places and descends – occasionally steeply – towards the village.</p>	
<p>Once it leads out onto a track turn R and then take the second L to follow down to the village square.</p>	7.6km, 2hr 27min
<p>Turn R and walk through the village and back to the car park.</p>	
<p>See map below.....</p>	
<p><small>Spanish maps included within these descriptions are provided courtesy of the Spanish IGN and remain © Instituto Geográfico Nacional</small></p>	
Walk Recommendations or restrictions	Some steep descents.

Remember that you use these walk guides at your own risk. Take precautions and if unsure – turn back!

Route followed is outlined in Red



Remember that you use these walk guides at your own risk. Take precautions and if unsure – turn back!