

## **COSTA BLANCA MOUNTAIN WALKERS - WALK DESCRIPTION**

Visit [www.walksinspain.org](http://www.walksinspain.org) for more walks descriptions in Spain

<b>Walk description originally prepared by:-</b>	Ralph Phipps
<b>Last Updated</b>	14 <sup>th</sup> September 2021
<b>Title of Walk</b>	Monte Asieso circuit from Jaca
<b>Location of Start (include name of nearest village/town at start of description)</b>	Jaca Outside Oroel Hotel
<b>Key Statistics for walk - Distance in km</b>	16
<b>Key Statistics for walk - Ascent in m</b>	630
<b>Key Statistics for walk - Walking time and total completion time including any stops</b>	4hr 5.5hr
<b>Key Statistics for walk - Grade (using CBMW system)</b>	S/B
<b>Grid reference of start point (if known)</b>	Lat: 42.57479, Long: -0.549129
<b>Directions to Start</b>	The Hotel Oroel is on the Avenida de Francia just to the N of the Citadel in the centre of Jaca.
<b>Short walk description</b>	An exploration of the E of the town, a good stretch up to the col at 1161m, followed by open views to the S and pretty Pyrenean villages of Guasillo and Asieso.
<b>Full Walk Description</b>	<b>Elapsed Walking Time/Distance so far</b>
Cross the main road walking towards the N and turn R into Calle Ibon de Iserias. At the end of this turn L and then first R to walk down to a roundabout with statues in the middle.	
Turn L and walk ahead to where the road forks and take the L fork walking beside the perimeter fence of the Special Forces army training unit.	280m, 3.5min
Keep ahead on this crossing the railway line and the main road far below you until you reach another roundabout with a car park off to the L.	
Cross this diagonally R to a signboard and take the L footpath keeping beside a fence.	1.4km, 19min
Follow this as it descends to join a track and keep ahead soon finding yourself walking on either side of a water collecting channel.	
When you reach a bridge across this that has a footpath coming down through the woods from the R to join you (you are on the LHS of the channel at this point) there is a continuation of this dropping away from you on the LHS. Take this.	2.3km, 30min

**Remember that you use these walk guides at your own risk. Take precautions and if unsure – turn back!**

## **COSTA BLANCA MOUNTAIN WALKERS - WALK DESCRIPTION**

Drop down to cross the railway line ahead and continue in zig-zags down to the road.	
Cross this with care and turn R soon joining a track off to the L which continues to a bridge with a signboard and finger post.	
Turn L across the bridge and then R rising on a concrete track which soon turns to gravel and keep ahead to a bend doubling back to the L.	3.6km, 48min
Leave from the bend on a footpath rising steeply up a rough gully and follow this until you rejoin the track higher up.	
Continue on this and watch carefully as each time this doubles back to the L there is almost always a footpath alternative going off R to cut of a large corner. Take these where you please (there are occasional finger posts pointing to Groisin) or follow the main track to eventually arrive at a clear col with a complex finger post.	6.1km, 1hr 35min
Here turn L and start to drop down continuing until just before you reach a second col in front of a steep hill in front of you where you will see a track descending to the R which we take apparently aiming for this large hill.	7.2km, 1hr 50min
Just a few metres down this a clear footpath goes off to the R and now you can follow this down along easy terrain until you drop down in zig-zags to a stream bed.	8.8km, 2hr 13min
Curl slightly L and cross the stream bed and clamber up a small bank to follow the footpath which follows a barbed wire fence for just a few metres.	
The path crosses and re-crosses this stream bed several times before emerging on a track where you continue ahead still descending.	9.5km, 2hr 24min
After you reach open country the track rises a little and there is a junction where you turn L.	
Drop down to cross a barranco and then keep directly ahead to climb steeply up to a spur and after this your track continues aiming for buildings in the mid distance.	11.2km, 2hr 48min
As you approach the village (Guasillo) fork L uphill to pass a finger post and then when facing an arch turn L up some steps before curving back around to the R to pass the church on your R. Just past this turn L to exit the village and continue on your track towards Asieso.	12.6km, 3hr 8min
Reach a tarmac road where you turn L to Asieso.	13.3km, 3hr 18min
Drop down out of the village to reach a more major road which we follow ahead to cross a bridge.	
At the far side of this turn L on a track and then immediately R rising on a footpath which doubles back to the R again now rising steeply above the tarmac road.	
Ignore a junction off to the L and reach a grassy balcony where the houses of Jaca	

**Remember that you use these walk guides at your own risk. Take precautions and if unsure – turn back!**

## **COSTA BLANCA MOUNTAIN WALKERS - WALK DESCRIPTION**

start.

Cross the road and walk down an alley and cross another road to continue down a shorter alley. At the bottom of this turn R and immediately L to walk down beside a car park. Beyond this cross the roundabout slightly to the R and ahead to reach the main road through Jaca. Turn L and in a few metres reach the Hotel Oroel. There are cafes directly opposite this!

Spanish maps included within these descriptions are provided courtesy of the Spanish IGN and remain © Instituto Geográfico Nacional

**Walk Recommendations or restrictions**

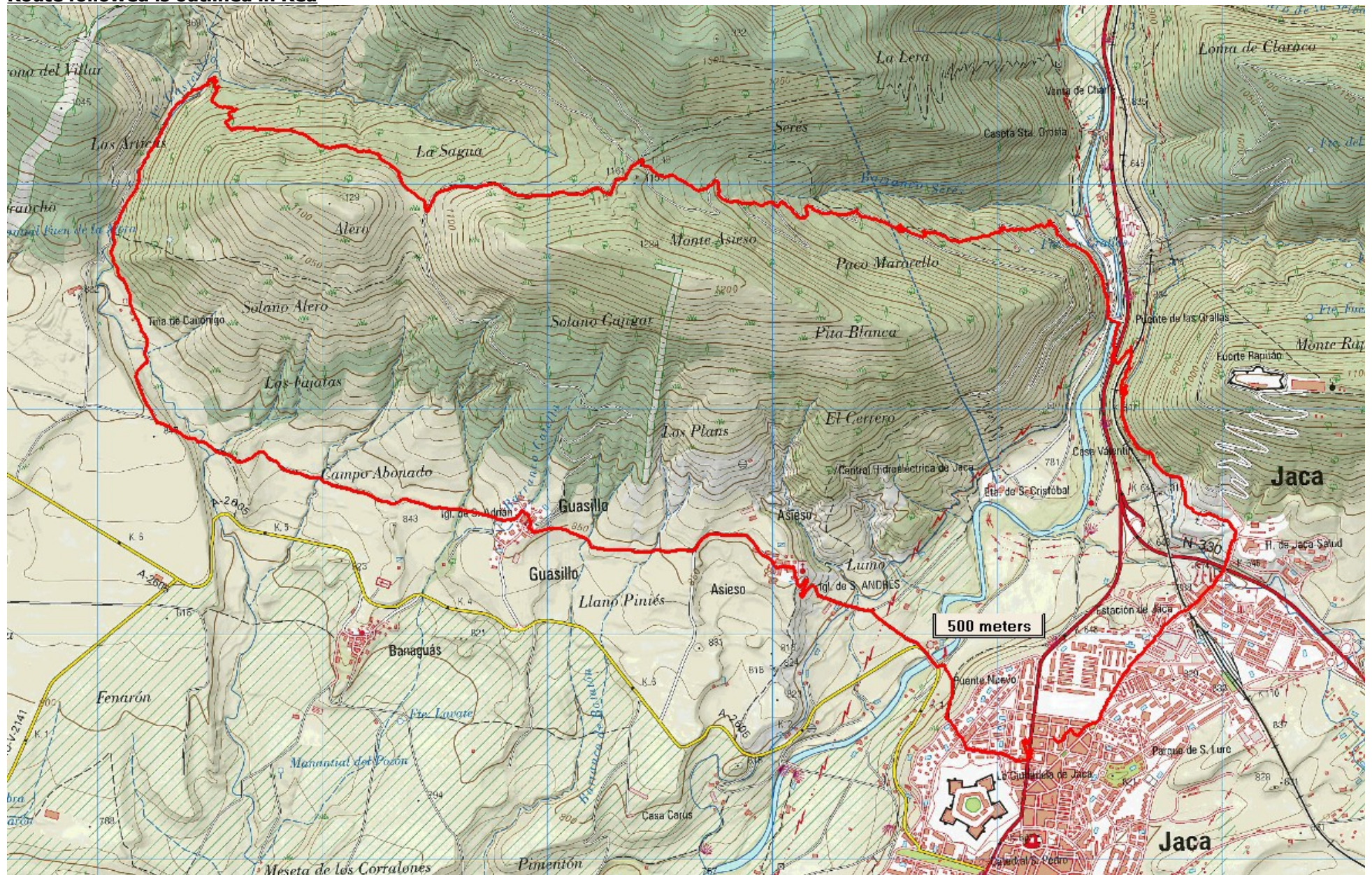
None

See map below.....

**Remember that you use these walk guides at your own risk. Take precautions and if unsure – turn back!**



Route followed is outlined in Red



Remember that you use these walk guides at your own risk. Take precautions and if unsure – turn back!