

COSTA BLANCA MOUNTAIN WALKERS - WALK DESCRIPTION

Visit www.walksinspain.org for more walks descriptions in Spain

Walk description originally prepared by:-	Ralph Phipps and Mary Gough
Last Updated	25 th April 2022
Title of Walk	Salares to Cruz de Muerto circuit
Location of Start (include name of nearest village/town at start of description)	Salares Parking on main street at entrance to village from MA4108 road from Archez.
Key Statistics for walk - Distance in km	12
Key Statistics for walk - Ascent in m	580
Key Statistics for walk - Walking time and total completion time including any stops	3.5hr 5.25hr
Key Statistics for walk - Grade (using CBMW system)	MS/B
Grid reference of start point (if known)	Lat: 36.85349, Long: -4.025597
Directions to Start	Drive up from the coast to Archez and then take the MA4108 until you drop down a hill and find Salares on your RHS (not visible until the last minute). Turn R towards the village and park in any of the parking spaces on either side of the road.
Short walk description	A mixed walk with delightful sections with mountain and coastal views and some tough and challenging paths requiring skilled navigation.
Full Walk Description	Elapsed Walking Time/Distance so far
Walk up towards the village and follow the main road as it swings L and R. Soon you can see above you on your L a series of brick buttresses and you continue up the road until you can turn L and climb on a broad track above these to reach a junction.	
Here turn R and in a few metres reach a horseshoe road where you turn R and only a few metres along this L up a concrete road.	520m, 10min
Follow this until you reach a dirt track going off L and take this up in zig-zags to reach a large tank where you turn R up a footpath beside a water channel.	1.1km, 20min
Follow this up as best you can occasionally needing to cross from side to side to avoid vegetation (and crossing through a corrugated iron gate) and using terraces to aid your progress.	

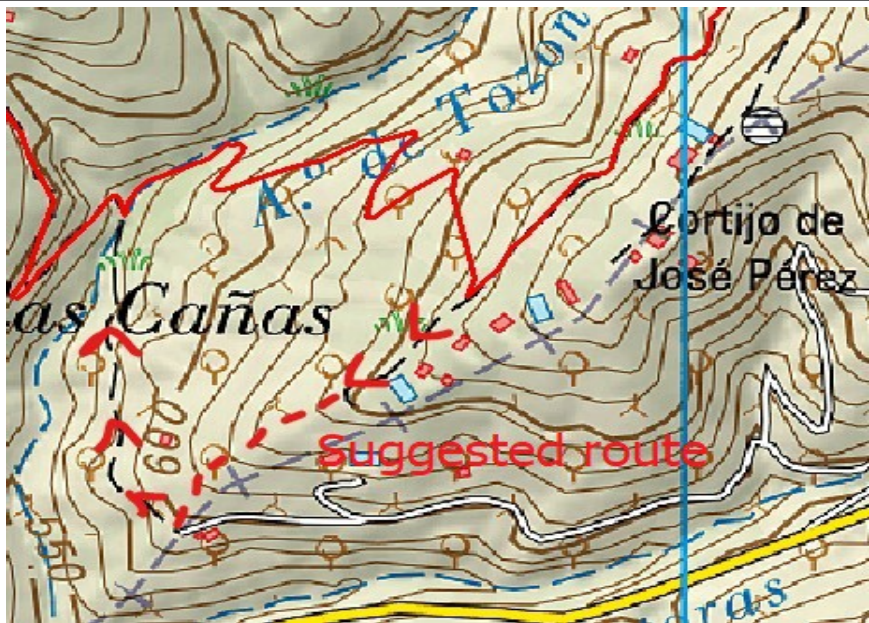
Remember that you use these walk guides at your own risk. Take precautions and if unsure – turn back!

COSTA BLANCA MOUNTAIN WALKERS - WALK DESCRIPTION

Soon when you are on the RHS of the channel reach a track which you follow uphill to the R.	1.7km, 33min
Reach and pass below a large house now with R/W markers.	2.1km, 39min
Follow this down to rejoin the concrete track.	2.3km, 43min
As soon as this reaches the first building there is a Parque Natural sign and the concrete track becomes a gravel track.	
Follow this around the head of a barranco and soon a track joins us from the L. 150m after this peer down on the RHS to see the makings of a footpath descending towards a water channel and then below this a barranco and on the far side of this a path climbing briefly before levelling off along terraces.	3.1km, 55min
You must work your way down as best you can (it's not easy) and walk into the head of the barranco where you cross and follow the footpath line scrambling up a few terraces before setting off level. Take care here to find the correct line!	
Follow this out and along as it becomes easier, curves around to the L above a steep gully and then soon joins a track.	4km, 1hr 12min
Below this is a ruin and as we turn L up the track there are further ruins above and on the L of a "castle".	
Continue up zig-zags to reach a track junction where we turn R.	4.6km, 1hr 24min
Pass 2 tracks going off L and at a third there are panoramic views off L of the villages in the valley – Canillas, Competa and Archez. Continue ahead.	
As this moves off down the ridge you come to yet another track going off L and we take this one.....	6km, 1hr 45min
..... soon descending steeply before levelling out along a ridge line dotted with houses.	
Continue down here enjoying the views until just before a substantial rise with a house "Casa 2000" on your L. Here take the continuing track going off R and descending.	6.9km, 2hr
<i>Follow this down for some considerable distance until you reach a set of gates with pillars immediately on the R of the track.</i>	7.8km, 2hr 13min
<i>Walk around these descending the concrete access road and turn L in front of the house to find a gravel track continuing to descend in zig-zags.</i>	
<i>Stick to the main line and finally reach the valley bottom where we join a track descending and continue downhill.</i>	8.3km, 2hr 22min
Detailed below is a "probable" better route that avoids the likelihood of "trespass" possible in the 3 highlighted sections above. Although it is likely to be trouble free the author has NOT confirmed it	

Remember that you use these walk guides at your own risk. Take precautions and if unsure – turn back!

COSTA BLANCA MOUNTAIN WALKERS - WALK DESCRIPTION



When you can see that this track starts to ascend again on the LHS you have probably gone too far! Only 100m after you joined the river bed there are a set of gates hidden in the undergrowth on your RHS. Open these and walk through.

A few metres through thick vegetation you swing back L ascending as the track becomes clearer and clearer.

Follow this relentlessly up around its zig-zags until high above a ruin the track appears to run out. (This part needs to be examined closely to determine the best line!!) If you follow the gps track you will encounter the track soon but not until after considerable pain!

9.7km, 2hr 53min

Once back on the path follow this uphill to emerge with surprise at a track junction.

Cross this and follow the waymarked footpath going ahead (SLA64 towards Salares)

As you reach a col just in front of a minor lump in front of you (only 150m from the track!) the path you need to take drops into a gully on your L – it looks very unlikely! As you descend this it becomes clearer and clearer and soon skirts around to the R to a viewpoint overlooking the village.

Follow this down partly on cobbles to reach a footpath junction where we turn L and drop down to the Arab Bridge.

Cross this, take a few paces L and then climb up a few zig-zags in the town to take the first turning on the L and follow this out to the parked cars.

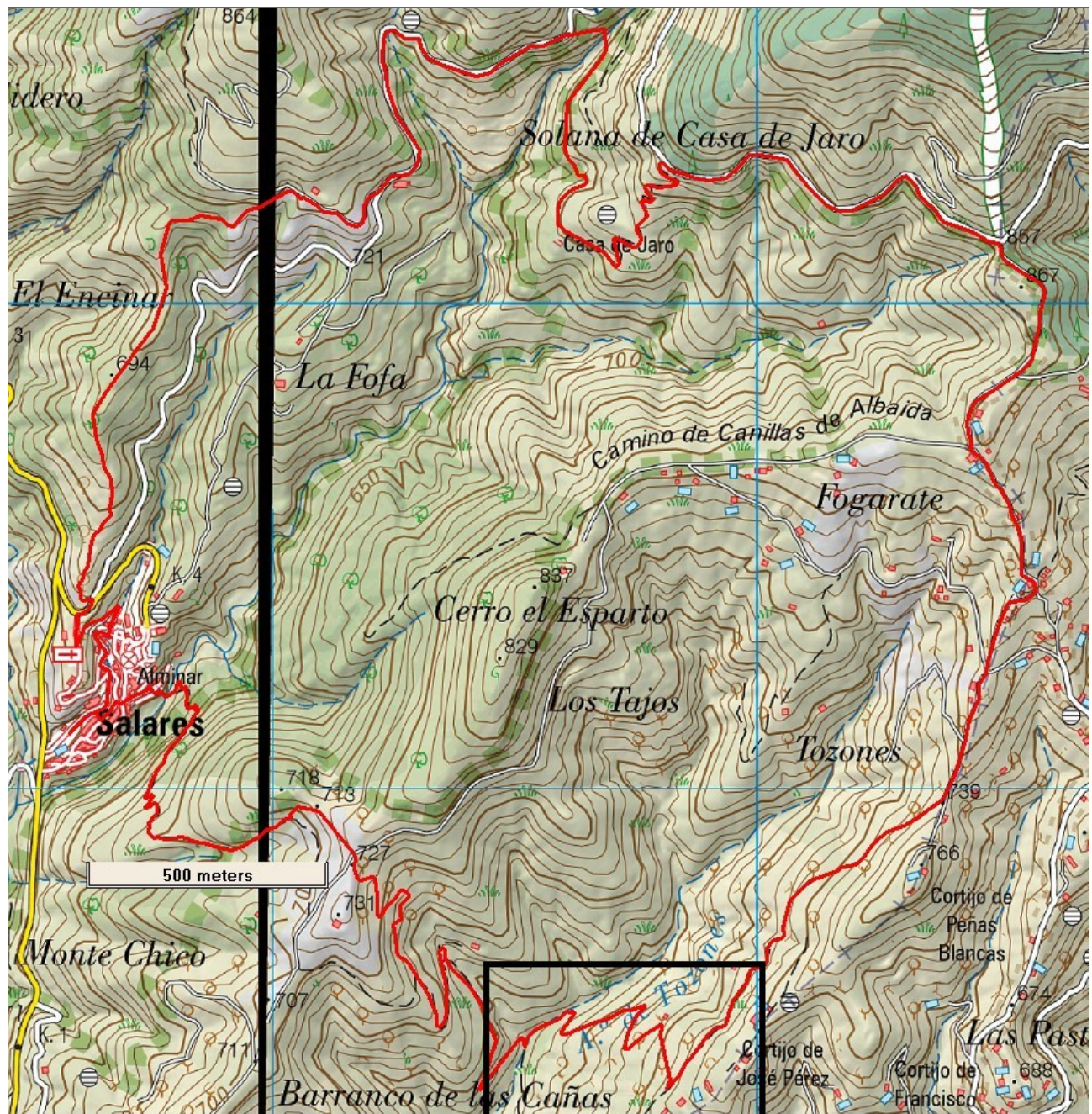
Spanish maps included within these descriptions are provided courtesy of the Spanish IGN and remain © Instituto Geográfico Nacional

Walk Recommendations or restrictions

There are several very challenging section on this route along with the possibility that you might be challenged for trespass around km 7.8 (see description). Only undertake it if you are up for a challenging but rewarding day out!

Remember that you use these walk guides at your own risk. Take precautions and if unsure – turn back!

Route followed is outlined in Red



Remember that you use these walk guides at your own risk. Take precautions and if unsure – turn back!