

COSTA BLANCA MOUNTAIN WALKERS - WALK DESCRIPTION

Visit www.walksinspain.org for more walks descriptions in Spain

Walk description originally prepared by:-	Ralph Phipps
Last Updated	13 th September 2022
Title of Walk	Sallent de Gallego to Formigal circuit
Location of Start (include name of nearest village/town at start of description)	
Key Statistics for walk - Distance in km	9
Key Statistics for walk - Ascent in m	350
Key Statistics for walk - Walking time and total completion time including any stops	2.33hr 3.33hr
Key Statistics for walk - Grade (using CBMW system)	M/A
Grid reference of start point (if known)	Lat:- 42.76947, Long: -0.33367
Directions to Start	The N260 road skirts along the Pyrenean chain in Spain from E to W. At Biescas the A136 road heads N towards France and after several kilometers there is a R turn towards the village of Sallent. Drop down to river level and turn R as if to cross it finding a large car park on your LHS before crossing the river.
Short walk description	A circuit using part of the GR11 to rise to Formigal and a delightful mountain side path to return at high level.
Full Walk Description	Elapsed Walking Time/Distance so far
From the car park cross the bridge over the river and follow the road to the L.	
A little way along this look out for a park on the LHS and drop into this crossing a delightful arched bridge.	240m, 3min
At the far side turn R uphill to reach a small square where you turn L and follow the road gently uphill.	350m, 5min
Just before reaching a pharmacy fork L.....	610m, 5min
and drop a little soon on gravel to rise up to a road where we turn L.	
Before reaching Bar Willy turn R to climb up a large bank of metal steps to reach a road.	870m, 14min

Remember that you use these walk guides at your own risk. Take precautions and if unsure – turn back!

COSTA BLANCA MOUNTAIN WALKERS - WALK DESCRIPTION

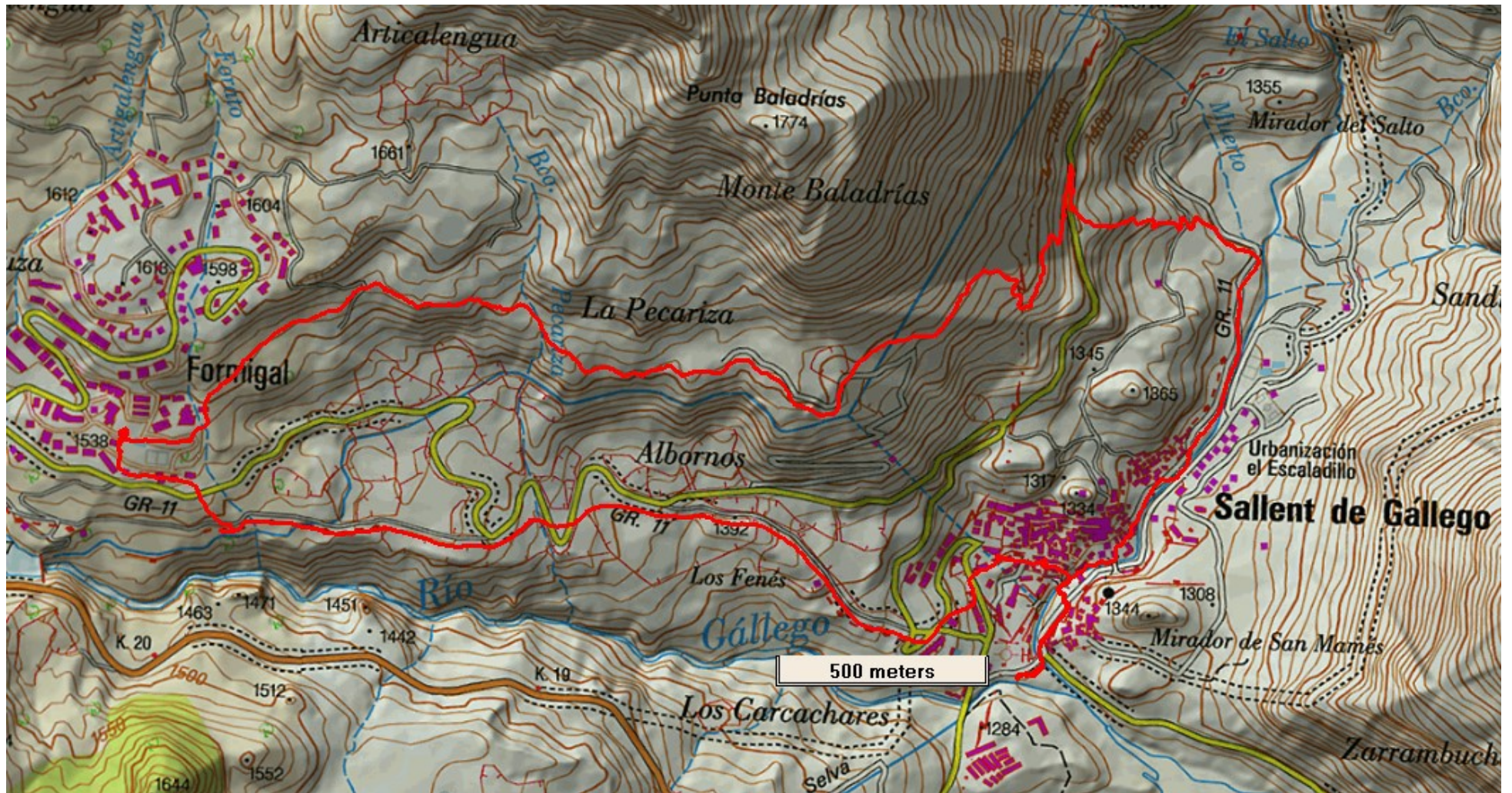
Turn L and after a few metres at a finger post turn R now climbing up a broad gravel track.	
Continue along this crossing a road several times until you are within 300m or so of the first buildings of the village and here turn R up a thin footpath to reach tarmac.	2.8km, 47min
Walk straight ahead and up a broad road that swings L and then continues level until you pass a fenced piece of "park" on your RHS.	
Just after this turn R.....	3.2km, 54min
and climb a few steps to reach the terrace of a bar and then a road. Turn R along this.	
As it curves around to the L there is a "barn" on your RHS. Walk in front of this and then turn L at the end.	3.7km, 1hr 4min
Now ignore the obvious green track going off slightly R and instead take the thin footpath line going more steeply up the spur on the L.	
Take care to stick with the path line as it drifts rightwards away from the spur and soon levels out with occasional climbs along the flank of the hill.	
This path is somewhat braided but by following the primary line you can continue along the flank to reach a track.	5.3km, 1hr 30min
Follow this gently downhill until you are walking due N and before the track turns R (slightly N of E) look out for a thin footpath going directly ahead up a gentle ramp. Follow this to meet a clearer footpath where you turn R.	5.7km, 1hr 36min
Soon reach woodland and ignore any steeply descending paths dropping off R to zig-zag your way down to eventually reach a road where you turn R.	6.7km, 1hr 52min
Quickly reach a path on the LHS with a finger post.	6.8km
Take this to descend to a further track.....	7.2km, 2hr
and again after only 30m turn R looking out for an unsigned footpath on the LHS which we take to once more descend to a track.	7.3km, 2hr 3min
Turn R along this soon reaching the outskirts of the town and continue ahead with the river on your LHS occasionally having to make minor detours on roads to soon join the river again.	
Recross the "Roman" bridge and return to the car park.	
<small>Spanish maps included within these descriptions are provided courtesy of the Spanish IGN and remain © Instituto Geográfico Nacional</small>	

Walk Recommendations or restrictions

None

Remember that you use these walk guides at your own risk. Take precautions and if unsure – turn back!

Route followed is outlined in Red



Remember that you use these walk guides at your own risk. Take precautions and if unsure – turn back!