

## **COSTA BLANCA MOUNTAIN WALKERS - WALK DESCRIPTION**

Visit [www.walksinspain.org](http://www.walksinspain.org) for more walks descriptions in Spain

<b>Walk description originally prepared by:-</b>	Mary Gough . Route credited to Hakan Lofgren Magnusson and Berndt Ostlund. 30 <sup>th</sup> .January . 2023
<b>Last Updated</b>	13 <sup>th</sup> February 2024
<b>Title of Walk</b>	La Mamelleta, Font Cova del Roget circuit
<b>Location of Start (include name of nearest village/town at start of description)</b>	La Nucia Parking on lane near gas cylinder depot.
<b>Key Statistics for walk - Distance in km</b>	12 kms
<b>Key Statistics for walk - Ascent in m</b>	750 mtrs
<b>Key Statistics for walk - Walking time and total completion time including any stops</b>	3hr 35 min 5 hrs
<b>Key Statistics for walk - Grade (using CBMW system)</b>	S/C/ Scr
<b>Grid reference of start point (if known)</b>	Lat.38.570429 Long. -0.166370
<b>Directions to Start</b>	CV758 La Nucia to Finestrat, from La Nucia direction after Km3 sign continue to Gas Cylinder Depot at RHS and turn L into narrow lane, cross a junction then park on open ground at LHS
<b>Short walk description</b>	An interesting low altitude hike with extensive views, three summits, a ridge, a font, a cave, a small scramble, some ' off piste ' but mostly good paths
<b>Full Walk Description</b>	<b>Elapsed Walking Time/Distance so far</b>
Turn R from car park, cross a junction and reach tarmac (CV758) go directly across onto a track, continue up and to reach a building at RHS	450mtrs. 7mins
Soon after passing a dwelling on RHS of track turn R up onto an ascending track ,continue by zig zagging up several terraces then onto open rocky terrain up LHS of a gully aiming towards a rocky knoll above with a painted sign (TORREO ),the path skirts to the L of the knoll and continues upwards now aiming L towards a small cluster of pines on the horizon ,just R of the pines reach the summit of this low ridge	920mtrs. 25mins
Turn L to far end of ridge to admire views then retrace steps and walk onto a clearer path leading down the the opposite side of ascent gully to reach a junction (cairn)	1.4km
Take R fork, the path passes through a copse of young trees with a view of 'Roldans	

**Remember that you use these walk guides at your own risk. Take precautions and if unsure – turn back!**

## **COSTA BLANCA MOUNTAIN WALKERS - WALK DESCRIPTION**

Notch' to forefront, to reach an old tree trunk surrounded by rocks, within a few metres (20) trend L (cairn) take the best line on a feint path to descend the ridge and reach a forested area, walk through the trees (feint path, cairns) to reach some semi cultivated terraces, drop down to lowest terrace	
Turn R (cairns), the path becomes clearer and reaches a small open area with an obvious central cairn – continue R to emerge at tarmac	55 mins
Turn R and continue to reach pylons at R and LHS of road	2.2km 59 mins
Turn L onto a track, pass a house Partida Roget 8, (the 'notch' directly ahead again) soon after reach a small junction	2.9km 1hr 7min
Walk onto a path ascending the RHS bankside, (within minutes see a rock with old blue /red paint) continue up to the ridge above and follow to the highest point on ridge top (viewpoint)	3.06km 1hr10m
Retrace steps to reach the tree line (cairn), trend R descending slowly to the next cairn	3.5km 1 hr23min
Turn R and descend undulating around the ridge, ignore a feint L fork and continue down to emerge on a forest track	3.6km
Cross over onto a path and continue to a junction	3.9km 1hr 36min
Go directly across ascending gently to reach a junction	4.5km 1hr50min
Take R fork and continue and pass to RHS of Cova Font Roget, curve R onto a feint path which passes to LHS of a small cave then leads forwards across to a rocky gully, scramble up to reach the ridge top	5km 1hr 55min
Turn L and work down to reach a track	5.6km 2hr16min
Turn R, within a few metres ignore a track at RHS and continue forwards on a feint path through a scrubby area, soon after trend sharp R and walk along the RHS of a low ridge (Benidorm in forefront) begin to descend to a clearer path which becomes eroded to reach a cairn	6km 2hr26min
Keep to LHS of cairn and continue to reach a track	6.5km
Continue forwards and contour L and R around barrancos to reach a junction (Pine tree)	6.6km 2hr40min
Turn R gently ascending to reach a junction	7.6km 3hrs
Take R fork to the next junction	7.85km
Take R fork and almost immediately reach a crossroads, go directly forwards under/through a pylon, after 10 mtrs drop onto a track, cross over onto a path, soon after reach another track	8.5km 3hr 11min
Go directly across and again after 10mtrs go directly across a track, reach a junction and take the L fork descending, just before reaching valley bottom drop down a slope at RHS onto a clear path, continue to reach a track	8.75km
Turn L and almost immediately R onto a path to continue to a large abandoned dwelling (Fuente Lliriet)	9.2km

**Remember that you use these walk guides at your own risk. Take precautions and if unsure – turn back!**

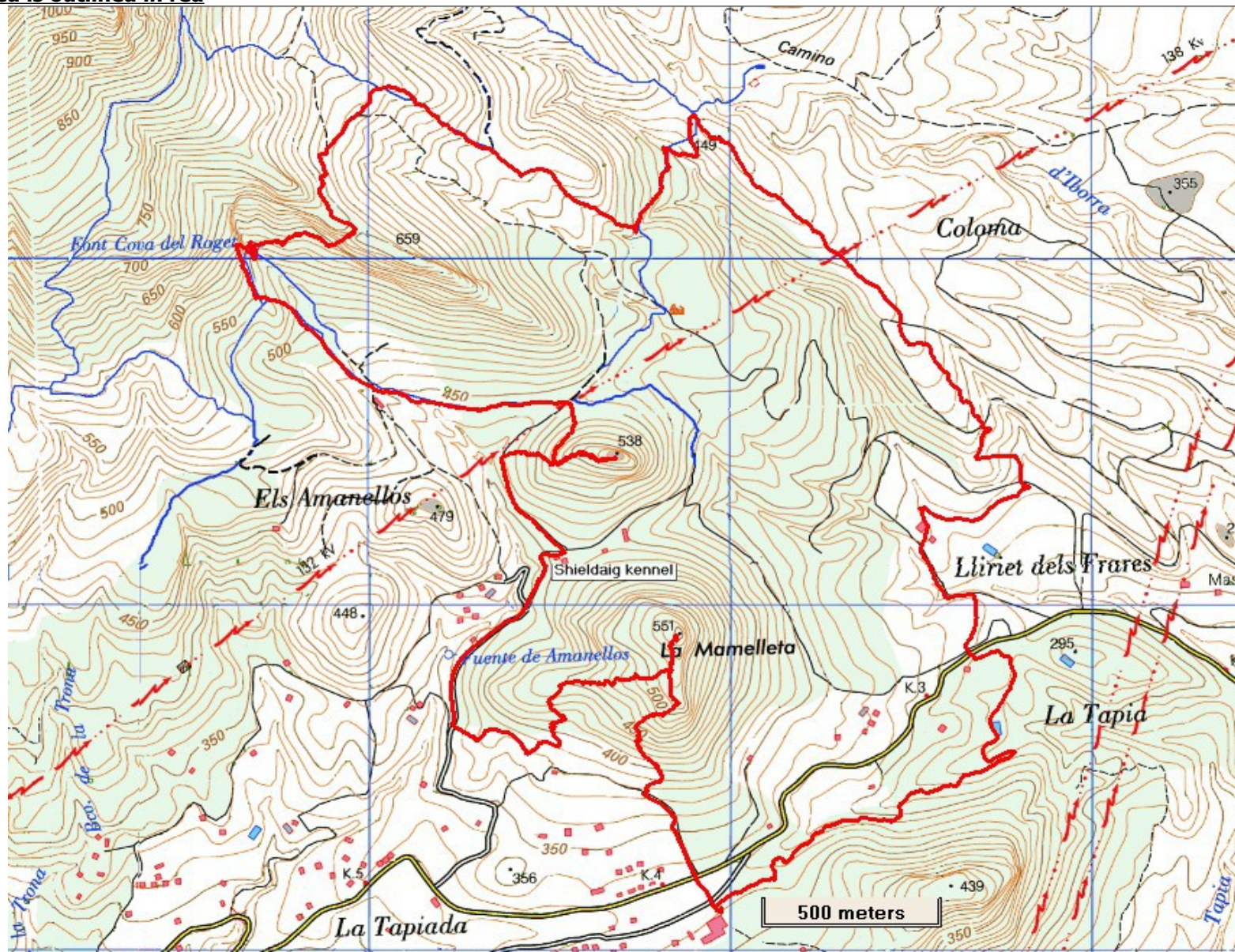
## **COSTA BLANCA MOUNTAIN WALKERS - WALK DESCRIPTION**

Pass to LHS of dwelling onto a driveway and continue, after approx. 300/350mtrs turn R up and onto a path through trees and follow to emerge at tarmac	9.65km 3hr30min
Go directly across tarmac onto a path, trend L in front of a wall, soon after keep to RHS of a rubbish deposit, continue ignoring all mountain bike shortcuts L and R to arrive at the rear of a white bungalow	10.1km
Follow path at LHS of bungalow to reach tarmac – and turn L to return to car park	11.55 kms
<small>Spanish maps included within these descriptions are provided courtesy of the Spanish IGN and remain © Instituto Geográfico Nacional</small>	
<b>Walk Recommendations or restrictions</b>	Good Navigational skills required

See map below.....

**Remember that you use these walk guides at your own risk. Take precautions and if unsure – turn back!**

Route followed is outlined in red



Remember that you use these walk guides at your own risk. Take precautions and if unsure – turn back!