

COSTA BLANCA MOUNTAIN WALKERS - WALK DESCRIPTION

Visit www.walksinspain.org for more walks descriptions in Spain

Walk description originally prepared by:-	Ralph Phipps, Fergus & Joan Fitzpatrick, 24 th Oct 2018	
Last Updated	13 th March 2024	
Title of Walk	Les Rotes Circuit	
Location of Start (include name of nearest village/town at start of description)	Denia, Parking next to Bar/Restaurant Helios at Las Rotas	
Key Statistics for walk - Distance in km	11	
Key Statistics for walk - Ascent in m	230	
Key Statistics for walk - Walking time and total completion time including any stops	2.75 3.75	
Key Statistics for walk - Grade (using CBMW system)	M/B	
Grid reference of start point (if known)	Lat: 38.8338376, Long: 0.1355065	
Directions to Start	On the Denia to Javea coastal road CV736, pass the "Marina de Denia" on your left. A further 1.3km at next roundabout, take 2nd exit signposted Les Rotes. After 130m take first left signposted to Restaurant "El Farallo" onto Camino Badia. Continue to end of road to Bar Helios. Turn right and park.	
Short walk description	A mix of promenade, track and footpath walk to Torre del Gerro and the "Abandoned Village". Beautiful coastal and mountain views.	
Full Walk Description		Elapsed Walking Time/Distance so far
Having arrived at the parking area by turning down Calle Badia to the sea, turn R, park and then continue in this direction for your walk with the sea on the LHS! This promenade continues for several km until you reach the Restaurant Mena.		2.1km, 26min
Walk out onto the main road and continue for a short way to reach the calle Via Lactea where you turn R and follow this up as it turns L.		2.3km, 29min
Follow the tarmac zig-zags steeply uphill to reach the Torre Del Gerro (looks like an old fashioned milk bottle!) and a finger-post a few metres above it.		3.2km, 44min
At the finger post turn L signed towards Cim del Montgo and continue along this path. Reach a large cairn marking a path junction to the L which we ignore and continue ahead.		4.2km, 1hr 4min

Remember that you use these walk guides at your own risk. Take precautions and if unsure – turn back!

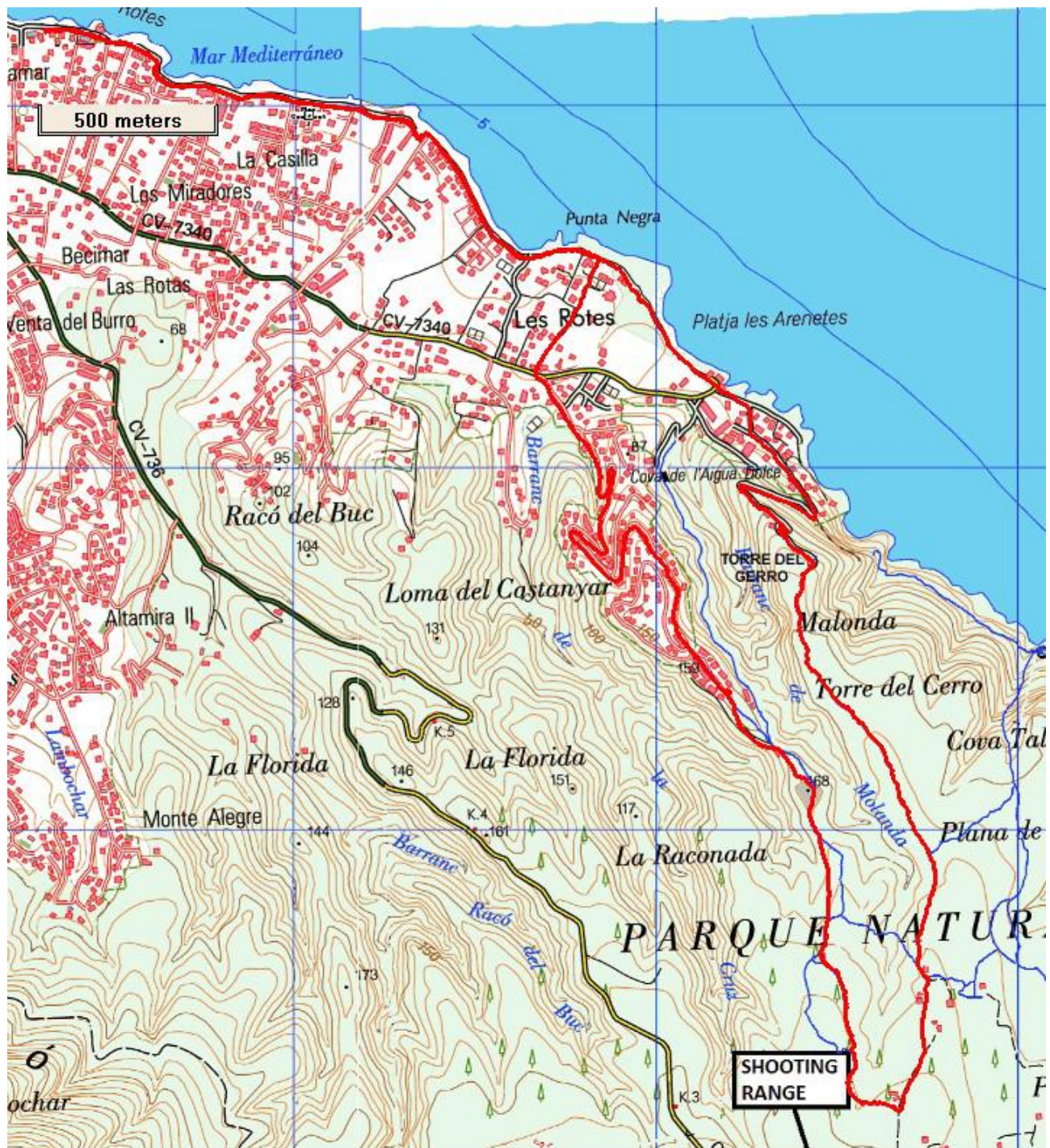
COSTA BLANCA MOUNTAIN WALKERS - WALK DESCRIPTION

A little way ahead ignore a path dropping to the R to cross a barranco and continue ahead.	
Reach a track just past a ruin and turn R along the track.	4.5km, 1hr 11min
Follow the track to pass a house on the RHS with a "prickly" sculpture and shortly after this a second house on the RHS with a road sign – Cami del Cova Tallada" and immediately after this turn R on a footpath	4.9km, 1hr 17min
which runs along the side of the house and drops to cross a barranco.	
Beyond this it swings R and works along the LHS of the barranco until you reach a ruin where there is a footpath fork where you keep R soon descending.	5.5km, 1hr 27min
A second barranco opens up on your L as you descend to reach the end of a small spur where there is a fork with a track going off slightly R and your footpath trending slightly L and along over the ridge.	
Follow this to descend past some ruins below you on the LHS to reach a col.	6.1km, 1hr 42min
Here there are 3 options but we keep L on a soon rising track that reaches the ruins of an abandoned development (Urb El Greco), which you can explore (but take care!). These ruins are known as the Abandoned Village, or Denia Ghost Town.	
Continue past the ruins until you come to a small gate in a fence. Go through the gate and continue down the main road (Carrer Siri).	6.5km, 1hr 47min
You come out at the main Les Rotes Road at the entrance to Lloma del Castanar	
Turn left for 50 mtrs to the Les Rotes parking, then cross the road at Carrer de L'Unicorn	8.1km, 2hr 22min
Continue straight until you come out at the Les Rotes promenade.	
Turn L and retrace your steps along the sea front and back to your cars.	
<small>Spanish maps included within these descriptions are provided courtesy of the Spanish IGN and remain © Instituto Geográfico Nacional</small>	
Walk Recommendations or restrictions	None

see map below.....

Remember that you use these walk guides at your own risk. Take precautions and if unsure – turn back!

Route followed is outlined in Red



Remember that you use these walk guides at your own risk. Take precautions and if unsure – turn back!