

## **COSTA BLANCA MOUNTAIN WALKERS - WALK DESCRIPTION**

Visit [www.walksinspain.org](http://www.walksinspain.org) for more walks descriptions in Spain

<b>Walk description originally prepared by:-</b>	Mary Gough
<b>Last Updated</b>	28 <sup>th</sup> .October . 2022
<b>Title of Walk</b>	Murla, La Plana circuit
<b>Location of Start (include name of nearest village/town at start of description)</b>	Murla Public Cemetery Car Park
<b>Key Statistics for walk - Distance in km</b>	12.25 km
<b>Key Statistics for walk - Ascent in m</b>	500m
<b>Key Statistics for walk - Walking time and total completion time including any stops</b>	3hrs. 50mins 5hrs. 30mins
<b>Key Statistics for walk - Grade (using CBMW system)</b>	MS /C/ Scr
<b>Grid reference of start point (if known)</b>	Lat. 38.762357    Long.    -0.082113
<b>Directions to Start</b>	Follow CV750 Alcalali to Murla road, in Murla turn R to Cemetery Car park (signed ' P ')
<b>Short walk description</b>	A circular route through some delightful countryside with extensive views of the surrounding mountains and down to the coast, includes a short scramble and several historic features 'en route'.
<b>Full Walk Description</b>	<b>Elapsed Walking Time/Distance so far</b>
Turn R from the car park and pass to RHS of a childrens' play area, swerve R onto a path, soon after take the L fork	5 mins
Follow the path to meet a concrete road, turn L and soon after turn R by a large pylon	10mins
pass the pylon and continue towards terraces and onto a feint path (cairn) below the top terrace, go forwards and across the next terrace to reach a concreted camino (cairn)	1.2 kms.
Turn R down LHS of a small copse then turn L onto a track	1.25 kms
Folow alongside copse to the end, trend L then almost immediately R alongside a scrubby area, drop slightly R at end ...	1.5 kms
Turn L and rise up a winding path until it levels off near a ruin	2 km    35mins
Walk forwards and reach a tarmac road	2.5 kms

**Remember that you use these walk guides at your own risk. Take precautions and if unsure – turn back!**

## **COSTA BLANCA MOUNTAIN WALKERS - WALK DESCRIPTION**

Turn L to reach a junction and ignore L turn, continue and as the road begins to drop turn R near trees (Y/W sign)	3 kms
Wind down to a junction with large boulders	3.5kms
Turn L (although marked Y/W cross), continue along this track to reach an obvious drop off at RHS (cairn) under a small tree, follow along RHS of a wall then trend R at a small junction then L through an old fruit terrace area, cross the riverbed, pass through bamboos and on rise of hill turn L to emerge at tarmac	4.3 kms
Turn L to enter Campell village, L at top of first street then R (Av.Tramos Pan), cross the square to reach the Church steps .	4.5km.1hr 20min
Keep L of the Church and soon after, at PR181 (Isberts Dam) sign turn L, follow the stony path to meet a concrete camino and turn L, ignore first R turn and soon after turn R (Y/W signed Fontilles) and follow the path to reach a Font	5.4km 1 hr 40m
Keep to RHS of Font and forwards to meet tarmac road, turn L and cross road .... after 50 mtrs turn R on a path up hillside, soon after level off and almost immediately turn L (cairn) and upwards, wind up a scrambly route following old red dots then level off (here is an option to wander around ruins (Castellet de la Plana/de les Atzavares) then back track to path)	6 kms
Continue forwards on feint path (cairns/old red dots) which soon after descends and winds through an area of small stone structures (arabic ruins) continue along a rocky path (cairns) and pass through a forested area and across the stony path (cairns) to meet tarmac	7kms.2hrs30min
Turn R to reach a picnic area (good lunch stop)	7.4kms
Spiral down and out and back to tarmac, soon after turn onto track at RHS, go forwards and just before reaching a small dam drop L (cairn) and work down then L(cairns) to pass at RHS of abandoned rusty bed frames, drop down wall and cross riverbed onto feint path (cairn) turn L and slowly wind and rise (cairns) to reach a water deposito	8.2kms.2hr45min
Pass to LHS of deposito and across tarmac onto a clear path, continue and emerge at a surfaced road	8.4kms
Turn L and onto a track to reach a junction	8.6 kms
Ignore first R fork and take second R (cycle sign on tree trunk)follow rough track to reach an open area with concrete wall at far side	8.8 kms.
Step over wall onto path below, ignore a path to L and next path R, and continue to reach a junction – turn R and R again to reach a PR post (Port de Murla)	9.3kms
Ascend this path to reach the Col (Port de Murla)	10.1km.3hr15min
Turn R along the camino to reach a wooden sign (Cami Port)	10.8 kms
Almost immediately turn R along narrow road to reach a track and a junction	11.1 kms
Ignore the R fork and trend L and forwards to reach the Fontilles Colony wall, continue along LHS of wall to a small rounded corner, trend L onto a path -follow along the terrace then turn R then L to emerge at tarmac	11.6kms

**Remember that you use these walk guides at your own risk. Take precautions and if unsure – turn back!**

## **COSTA BLANCA MOUNTAIN WALKERS - WALK DESCRIPTION**

Turn L to a small junction beside a villa, turn R and continue to a sign near a large pine tree, turn L and return to car park along the outgoing path....

Spanish maps included within these descriptions are provided courtesy of the Spanish IGN and remain © Instituto Geográfico Nacional

**Walk Recommendations or restrictions**

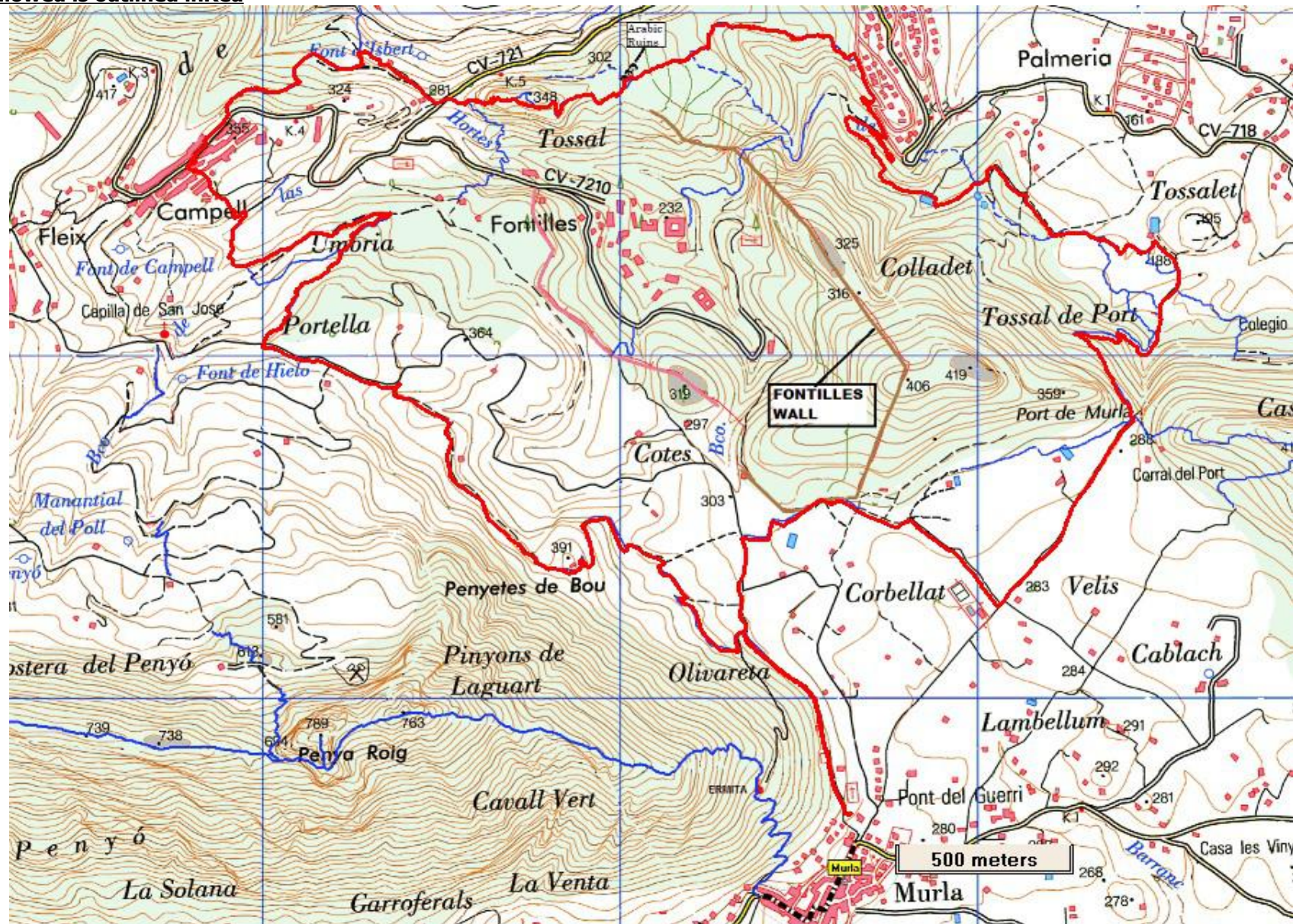
None

See map below.....

**Remember that you use these walk guides at your own risk. Take precautions and if unsure – turn back!**



Route followed is outlined in Red



Remember that you use these walk guides at your own risk. Take precautions and if unsure – turn back!