

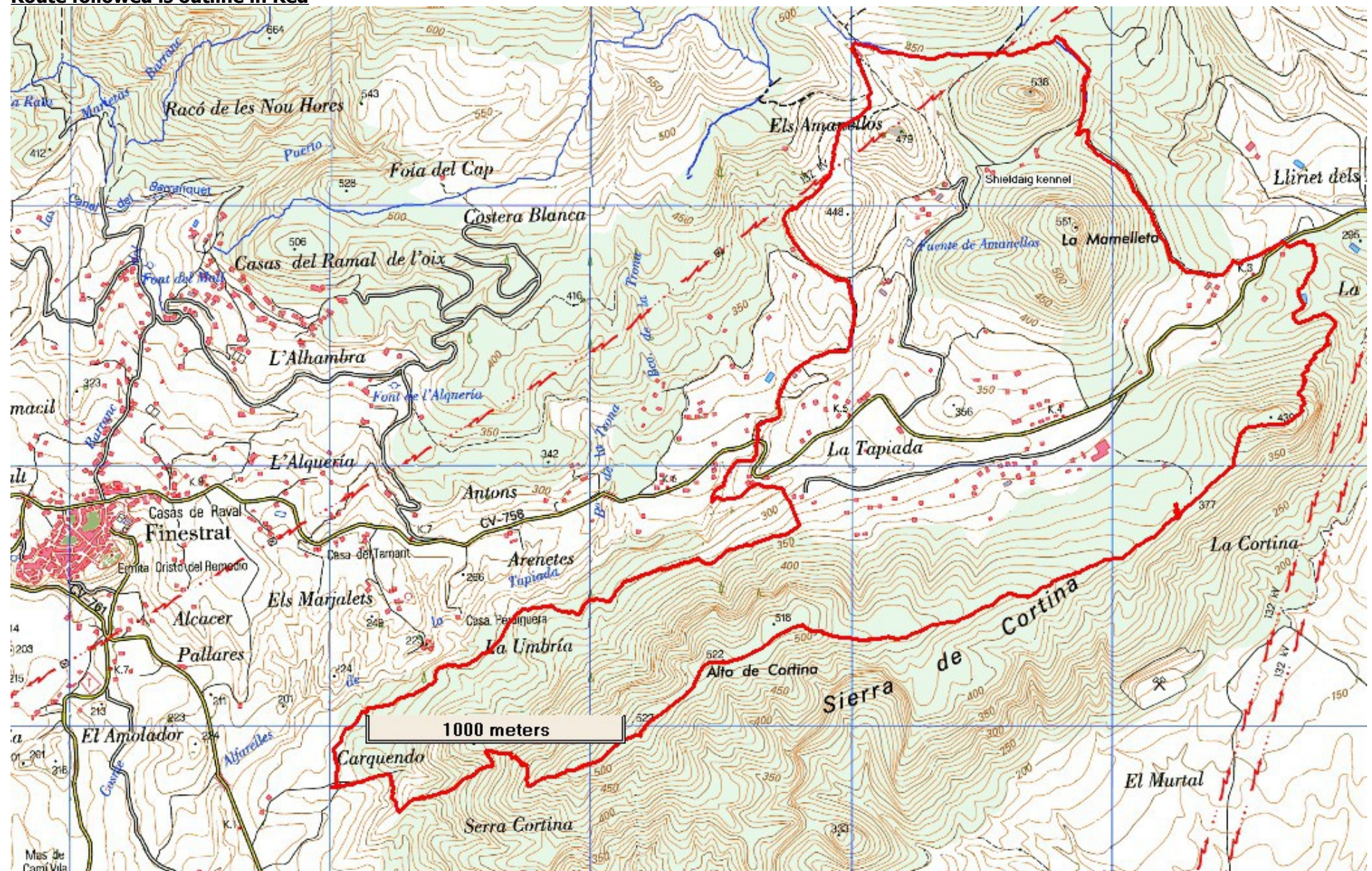
COSTA BLANCA MOUNTAIN WALKERS - WALK DESCRIPTION

Visit www.walksinSpain.org for more walks descriptions in Spain

Walk description originally prepared by:-	Ralph Phipps
Last Updated	12 th April 2023
Title of Walk	Sierra Cortina
Location of Start (include name of nearest village/town at start of description)	Finestrat Street parking
Key Statistics for walk - Distance in km	13
Key Statistics for walk - Ascent in m	610
Key Statistics for walk - Walking time and total completion time including any stops	4 hr 4.5hr
Key Statistics for walk - Grade (using CBMW system)	S/B
Grid reference of start point (if known)	Lat:- 38.558968, Long: -0.200237
Directions to Start	Take the CV767 from either 332 or AP7 towards Finestrat. About 2k before Finestrat at roundabout take first exit and after 300m park on street.
Short walk description	A good walk with views over Benidorm to one side and Puig Campana to the other. Steep at the beginning to get onto the ridge, then undulating.
Full Walk Description	Elapsed Walking Time/Distance so far
<p>FULL WRITE UP NOT AVAILABLE.</p> <p>VOLUNTEER REQUIRED TO COMPLETE.</p> <p><small>Spanish maps included within these descriptions are provided courtesy of the Spanish IGN and remain © Instituto Geográfico Nacional</small></p>	
Walk Recommendations or restrictions	None

Remember that you use these walk guides at your own risk. Take precautions and if unsure – turn back!

Route followed is outline in Red



Remember that you use these walk guides at your own risk. Take precautions and if unsure – turn back!