

COSTA BLANCA MOUNTAIN WALKERS - WALK DESCRIPTION

Visit www.walksinspain.org for more walks descriptions in Spain

Walk description originally prepared by:-	Ralph Phipps
Last Updated	15 th April 2024
Title of Walk	Castell del Vall de Uixo
Location of Start (include name of nearest village/town at start of description)	Vall d'Uixo End of street at NE end of town.
Key Statistics for walk - Distance in km	10
Key Statistics for walk - Ascent in m	560
Key Statistics for walk - Walking time and total completion time including any stops	3hr 4hr
Key Statistics for walk - Grade (using CBMW system)	MS/B
Grid reference of start point (if known)	Lat: 39.83314, Long: -0.23095
Directions to Start	From junction 283 on the A7 (accessed from the S only) follow the carretera Moncofar NE around the town. This runs straight ahead into C/Andalucia and then C/Segorbe and then you turn R into Carbonnaire Carrer 12 just after a small park and large open area on your RHS and follow this to its end to park.
Short walk description	A challenging ascent up to the substantial castle remains before an easier walk around the head of a barranco with good views before returning to your start point.
Full Walk Description	Elapsed Walking Time/Distance so far
Walk directly ahead up the track and soon look out for a wooden finger post on the RHS pointing to "Castell". Take this.	270m
Ascent the footpath/ drainage gully to meet a track where you turn L.	520m
At the next junction turn R up a concrete track and zig back to the R to find a footpath on the L which we follow.	780m
Zig over to the L and then ascend a steep bank to intersect a footpath where you turn L. (perhaps the correct line from below?)	
Reach the Col de Vespa and turn L along the <u>footpath</u> which is level for a few metres before it starts to zig-zag up towards the summit.	1.4km

Remember that you use these walk guides at your own risk. Take precautions and if unsure – turn back!

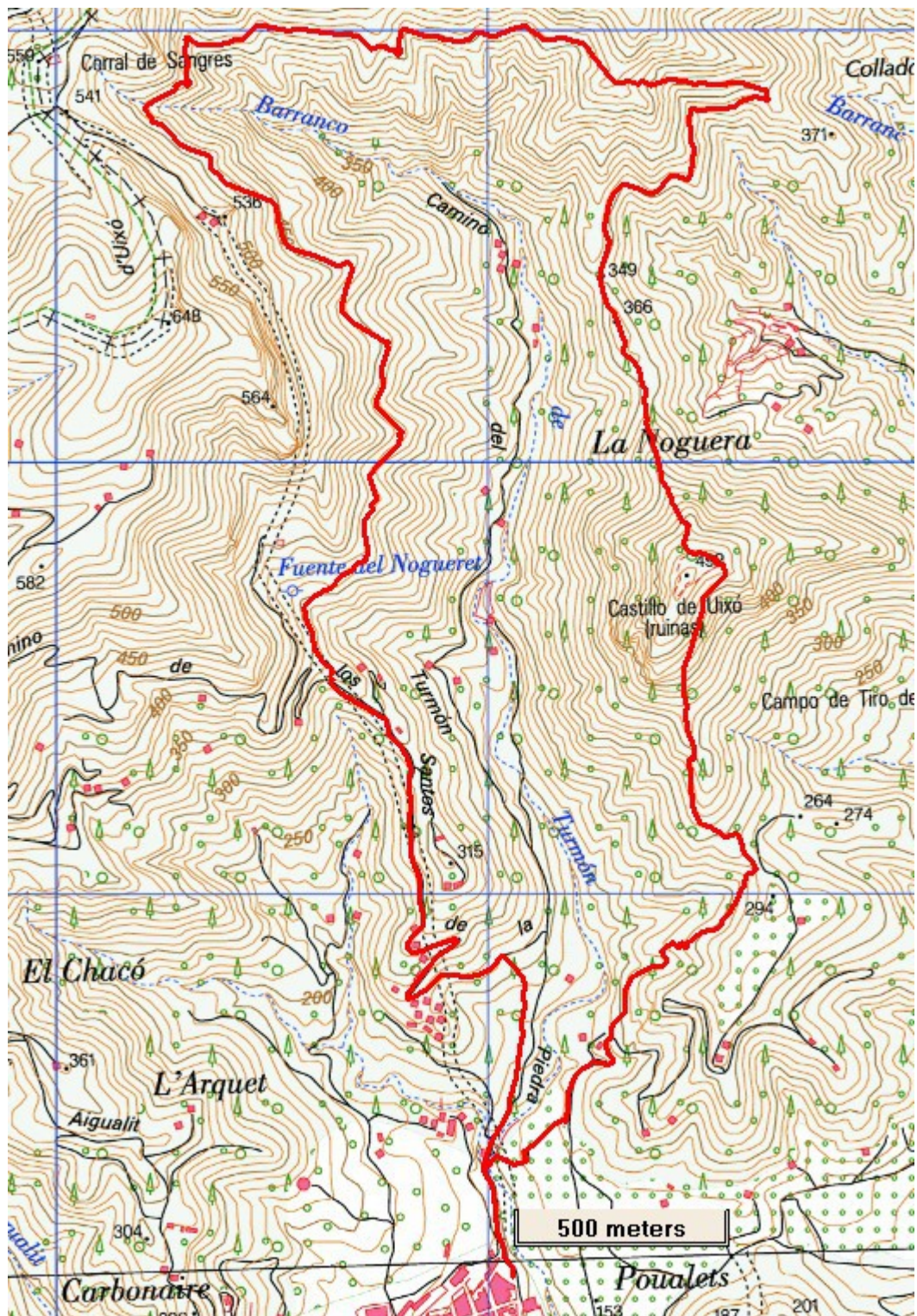
COSTA BLANCA MOUNTAIN WALKERS - WALK DESCRIPTION

<p>The line of the path is tricky to follow but overall it is best to follow the cairns which lead up towards the summit and when you reach the plateau on which the castle sits keep to the R (outside) of the main castle wall for a few metres before entering L through a gateway.</p>	2.2km
<p>Now follow the internal plateau across to the NE to exit the walls and immediately turn L on a footpath again outside the castle walls.</p>	
<p>This soon starts descending with tricky sections to eventually reach the Coll de Mena with a smaller hill in front of you.</p>	3.1km, 1hr 32min
<p>Here a path joins you from the L and here we turn towards the R contouring around the hill and aiming for a well opening in the more distant hill.</p>	
<p>Wind around a couple of barrancos to a spur with a cairn and blue dot marking a path going back up to the L. Take this.</p>	3.9km, 1hr 44min
<p>Follow this in indistinct zig-zags with cairns to reach a spur with a finger post and here we descend slightly to the L signed to Vall d'Uizo 6.75km.</p>	4.2km, 2hr
<p>This soon levels out and we follow it around to spur with a finger post where we turn R steeply uphill to begin with.</p>	
<p>Pass a finger post pointing back up a barranco to a cave and continue ahead.</p>	
<p>Reach a further finger post signed to Cami L'Horteta just before a pic-nic area and turn L briefly downhill before turning along to the R.</p>	5.6km, 2hr 22min
<p>This curves around the head of the barranco to reach a cross roads of paths on a spur which we ignore and continue ahead descending steadily.</p>	6.3km, 2hr 44min
<p>Ignore a path rising on your R with a cairn and a blue dot and continue descending.</p>	
<p>Reach a flagged track and turn L downhill.</p>	7.5km, 2hr 44min
<p>When you reach a finger post to La Casota turn R descending to cut a corner in the track.</p>	
<p>Rejoin the track and continue ahead to your parked cars.</p>	
<p><small>Spanish maps included within these descriptions are provided courtesy of the Spanish IGN and remain © Instituto Geográfico Nacional</small></p>	
<p>Walk Recommendations or restrictions</p>	<p>Some awkward scrambling up and down to the castle. After that the going is straightforward. No walk timings available.</p>

See map below.....

Remember that you use these walk guides at your own risk. Take precautions and if unsure – turn back!

Route followed is outlined in Red



Remember that you use these walk guides at your own risk. Take precautions and if unsure – turn back!