

## **COSTA BLANCA MOUNTAIN WALKERS - WALK DESCRIPTION**

Visit [www.walksinSpain.org](http://www.walksinSpain.org) for more walks descriptions in Spain

<b>Walk description originally prepared by:-</b>	Colin Read
<b>Last Updated</b>	29th November 2023
<b>Title of Walk</b>	Javea circuit to the Eye of Montgo
<b>Location of Start (include name of nearest village/town at start of description)</b>	Javea. Small car park beside walk board at foot of the route to Ermita de Santa Lluçia.
<b>Key Statistics for walk - Distance in km</b>	9km
<b>Key Statistics for walk - Ascent in m</b>	590
<b>Key Statistics for walk - Walking time and total completion time including any stops</b>	3.25hr 5hrs
<b>Key Statistics for walk - Grade (using CBMW system)</b>	MS/C/Scr
<b>Grid reference of start point (if known)</b>	Lat: 38.792062, Long: 0.157944
<b>Directions to Start</b>	<p>Approaching Javea on the CV-734 cross the roundabout (with the iron sculpture on it at the edge of the town) At the next roundabout go right around to double back, signed to Cabo Sant Antoni. Then turn immediately R. Continue to the next roundabout and go straight on signed to Denia and Cabo Sant Antoni. Continue up the hill for 500 metres to a pedestrian crossing at a crossroads. Turn L into Cami de Santa Lluçia, which has a stone cross at its junction. Follow this narrow road for about 200m, taking the L branch at a fork, to reach a parking area with walk board, at the foot of the conical hill of the Ermita de Santa Lluçia.</p> <p>From Denia on the CV-736. At the bottom of the pass in Javea go across the roundabout, signed to Alicante and Gata and in about 300 metres at a raised pedestrian crossing, beside a cross roads turn R into the junction with the stone cross (hidden) and follow the route described above.</p>

**Remember that you use these walk guides at your own risk. Take precautions and if unsure – turn back!**

## **COSTA BLANCA MOUNTAIN WALKERS - WALK DESCRIPTION**

### **Short walk description**

A varied walk with a number of points of interest and spectacular views from the eye. Despite it's brevity it has some steep and rugged terrain. After passing the Ermita Calvari, a hidden, rugged ridge offers some scrambling and leads to a civil war memorial. Easier paths go across Les Planes, then a steep ascent up to the eye. Here, time should be taken to enjoy the extensive views and to explore the cave. Return is by little frequented paths down the southern slopes and finally a visit to the Ermita de Sant Lucia. The scrambling on the ridge comprises of short, steep sections and some is unavoidable, except at the eye where it is optional. Some paths are a little vague and also a little scratchy!

### **Full Walk Description**

#### **Elapsed Walking Time/Distance so far**

Follow the track out of the back of the car park, signed "Ermita Santa Lucia 1.1km". After a few hundred meters take a path on the R (with G/W cross) which cuts back R up the slope to emerge on a track beside the Ermita del Calvari.

210m  
5min

Follow the track ahead a short distance and descend steps on the R to join the lower part of the Calvari on the L. Follow it down looking out for more steps to the R to reach a gateway set in a stone arch. Go through the arch and descend the road to a 'T' junction, turn L to reach the main road at a roundabout. Turn L, follow the road uphill for about 150m, until just before a left hand bend. Cross the road with care, onto Carrer Albocasser. Descend the concrete road which becomes a track and leads down to twin bridges, where two barrancos, which are divided by a ridge above, converge.

880m  
15min

Cross the first bridge and step through the gap on the L, at the end of the parapet (blue and red paint marks) carefully walk along the edge of the retaining wall, to gain rock slopes at the foot of the dividing ridge. Ascend bearing R following a series of blue paint dots, they lead up the right flank, gradually stepping up to the foot of the steep rock band, follow it along until below the L/H end of a prominent orange overhanging section. Climb up at a blue dot, or a few metres to the right via steep moves, to a ledge alongside the overhang (which is probably used by climbers! Note; the blue markers end here). Move up L then R and climb the next rock step (cairns). Turn R and work up towards the next rock band, do **not** follow the obvious terrace leading R towards the barranco, but go L across a bancale until beneath the rock band, turn R and surmount a boulder to reach a depression through the rock and climb it.

1.12km  
28min

Descend the other side for several metres to outflank vegetation and ascend to the ridge immediately. Follow it (cairns) mostly on the L, sometimes near the crest and occasionally on the right edge overlooking the barranco, with occasional bits of scrambling and passing close to a telegraph pole en-route, concentration is required to avoid losing the line. Eventually, just after a wall with a faded orange arrow painted on it, the way ahead opens out and just beyond another telegraph pole a stone cross comes into view on the R. Make for this. It is a monument to commemorate 13 men of Denia entombed in the abyss below, victims of Spains civil war!

1.59km  
53min

**Remember that you use these walk guides at your own risk. Take precautions and if unsure – turn back!**

<p>Turn, with your back to the cross, and follow a path marked with white painted stones which winds its way in the direction of Montgo, to emerge on the main road CV-736 beside the junction with the Cap de Sant Antoni road.</p>	<p>1.7km 56min</p>
<p>Turn R onto the Cap road then in a few metres cross it at a stop sign, to gain a short path leading back L to the main road (marked Y/W). Cross the road with care onto a path directly opposite, follow it to a junction with a track. Cross this onto another footpath (Y/W cross on tree) and continue, ignore a fork off R and bear L, continue to pass a water depositary and reach a large green building.</p>	<p>2.4km 1hr 6min</p>
<p>Turn R in front of the building, to find a footpath straight ahead, which weaves through trees to junction with a track, turn R and continue to "T" junction with the main Montgo access track.</p>	<p>2.75km 1hr 10min</p>
<p>Turn L and follow the track (Y/W) at the junction with a no entry road sign, turn R. Continue, passing a Finca on your L, ignore a side track on the R with Y/W cross and at the next junction turn R. This track rises uphill to reach a sign post, under the slopes of Montgo.</p>	<p>3.82km 1hr 24min</p>
<p>Turn L onto a track (Y/W cross) which soon becomes a footpath. It rises a little before descending slightly, then goes down a small rock step to join a slightly more defined path, coming up from the left (your return route). Bear R on this (marked with green dots) for about 18 metres to a cairn, at a junction with a path going uphill on the R.</p>	<p>4.02km 1hr 29min</p>
<p>Follow this path steeply uphill (faded green dots), it leads onto a rocky rake, which is mildly exposed and has stunning views over the countryside below. Continue up it, then scramble up a ramp of rock to reach a resting place directly below the cave.</p>	<p>4.86km 1hr 55min</p>
<p>Option, not to be missed. Scramble up rock above to a low arch in the righthand corner, pass through it and descend across to the R to look through the eye. Return, then ascend towards the centre to access the main cave. A number of alternative lines are possible, just remember you have to get back down!</p>	
<p>Descend your upward route back to the cairn at the last footpath junction. Turn L and follow the faded green markers, ignore the rock step of your outward path and bear R heading towards a group of Fincas, but before reaching them the path junctions with a track.</p>	<p>6.05km 2hr 20min</p>
<p>Turn R, follow the track to a "T" junction with another track. Turn R and follow it for about 500 metres, ignoring any side tracks, to reach a crossroad of tracks (look left and you will see the large green building which you passed on the outward journey).</p>	<p>7.03km 2hr 32min</p>
<p>Turn R, ahead the track ends almost immediately, go straight ahead onto a narrow path through dense undergrowth. The path emerges onto a junction of tracks.</p>	<p>7.24km 2hr 35min</p>
<p>Go straight ahead, ignoring the tracks going left and right, to locate another narrow path. Follow it south as it winds along this short ridge (Yellow dots) heading towards a pylon. Just before reaching it, the path turns sharp L then descends, to reach a surfaced road at the top of an urbanisation.</p>	<p>7.62km 2hr 41min</p>
<p>Turn L, follow the road to a junction just before reaching the main road and turn sharp R along C de Lastres, at the next "Y" junction bear L onto C Mieres and descend to a cross roads. Turn L onto Calle Ponferrada and almost immediately turn R onto a track. (From here, it is also possible to continue down the road, which becomes a track and leads back to the carpark).</p>	<p>8.47km 2hr 58min</p>

**Remember that you use these walk guides at your own risk. Take precautions and if unsure – turn back!**

## **COSTA BLANCA MOUNTAIN WALKERS - WALK DESCRIPTION**

Follow the track (G/W markers) to a concrete path with handrail. Ascend this path, ignoring a path on the L at signboard to reach the Ermita de Santa Llucia, at the top of the conical hill. Where you can look back towards Montgo, the Eye and your descent route!

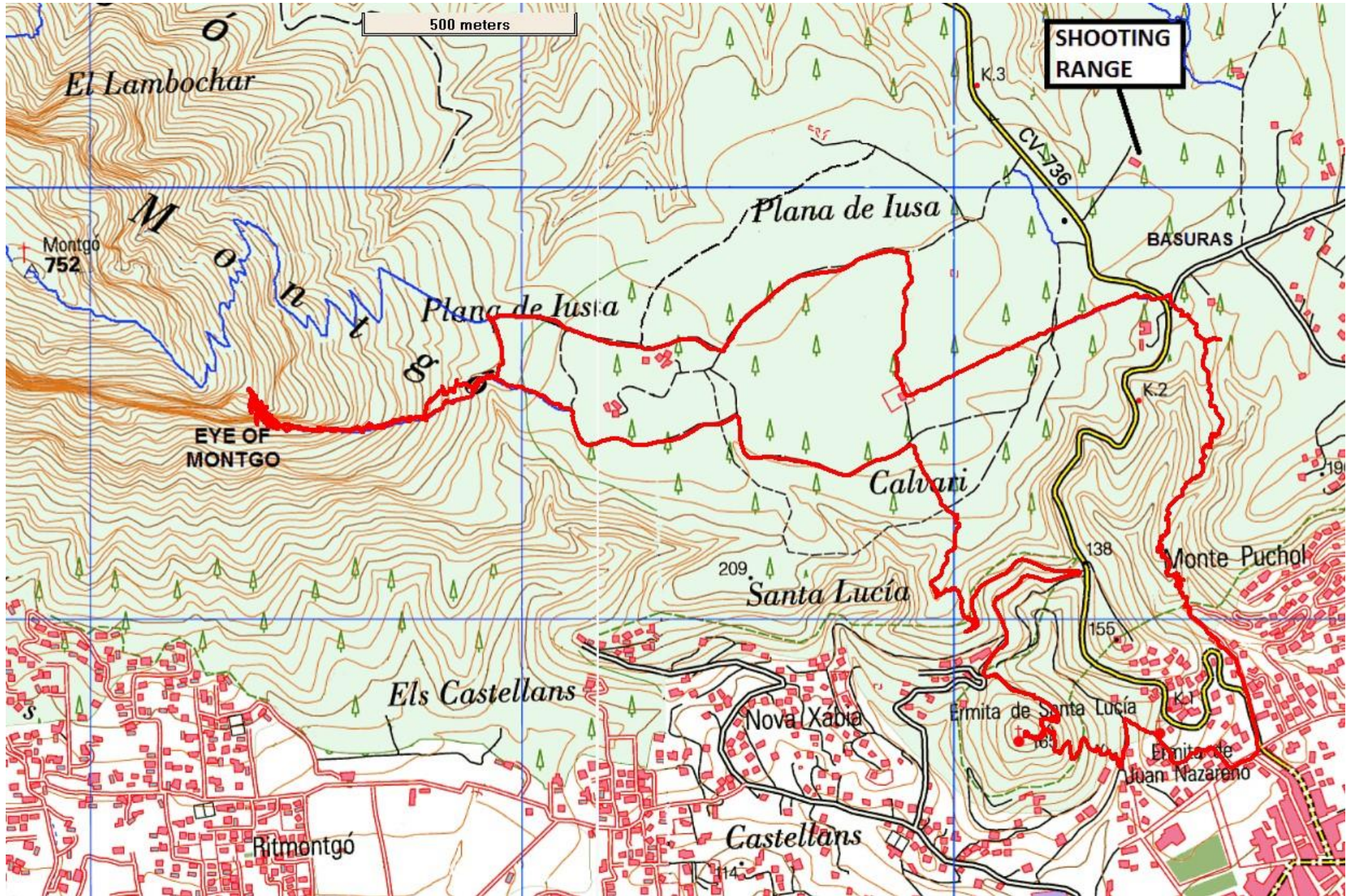
8.8km  
3hr 07min

Return down the concrete footpath to the signboard and take the rough path on the R which leads back to the carpark.

9.23km  
3hr 15min

### **Walk Recommendations or restrictions**

Some short but steep sections of scrambling involved, not recommended in damp conditions.  
Not suitable for dogs.



Remember that you use these walk guides at your own risk. Take precautions and if unsure – turn back!