

COSTA BLANCA MOUNTAIN WALKERS - WALK DESCRIPTION

Visit www.walksinspain.org for more walks descriptions in Spain

Walk description originally prepared by:-	Colin Read
Last Updated	28th March 2024
Title of Walk	Lliber Tossal Gran Circuit
Location of Start (include name of nearest village/town at start of description)	Lliber / Gata de Gorgos. At the Font D'Aixa.
Key Statistics for walk - Distance in km	7
Key Statistics for walk - Ascent in m	450
Key Statistics for walk - Walking time and total completion time including any stops	3hrs 4.5hrs Times include taking in the options
Key Statistics for walk - Grade (using CBMW system)	MS/C
Grid reference of start point (if known)	Lat: 38.757250, Long: 0.034277 This is the Junction of CV-748 and Cami Font D'Aixa.
Directions to Start	At km 5.25 on the Gata to Lliber CV-748, turn north onto the Cami Font D'Aixa, beside an info board for Escalade (Rock climbing). Follow the narrow Cami for 2.4km, to reach Font D'Aixa where there is ample parking. Lat: 38.766916, Long: 0.019138 for Font D'Aixa car park. Not all Sat Nav's will find this. Note: This road is not suitable for large Motorhomes.
Short walk description	A short steep climb, leads onto the eastern ridge of the mountain. A rugged path leads across to the 'Hoyo' on Penya Del Fred. A marked path of PR-CV53 (with optional cave visit) leads to the Col below Castell D'Aixa, where unmarked paths go up the western flank (passing en-route twice through the East/West Meridian) to the summit of Tossal Gran (591m). From here there are wide ranging views. The vista ahead is wonderful as you descend down the east ridge to regain the marked paths at a col crossed earlier. The route then goes via the 'Squeeze' directly to Font D'Aixa. Some of the terrain is rough and some sections of path are vague. Sometimes it is a little scratchy, but none the less rewarding. Though short this is a rugged route!

Remember that you use these walk guides at your own risk. Take precautions and if unsure – turn back!

COSTA BLANCA MOUNTAIN WALKERS - WALK DESCRIPTION

Full Walk Description	Elapsed Walking Time/Distance so far
<p>From the font, walk back along the road signed towards Pedreguer. Ignoring a track with signpost on the L, continue to another track on the L next to a small lay-by, with a signpost for PR-CV53 towards Font Coberta. Ignore it and continue along the road. In about 20 metres reach an unsurfaced track (sometimes chained) which slants back up right.</p>	<p>7min 500m</p>
<p>Follow the track for about 20m. Turn L up a vague path (cairns) which climbs steeply up over rocky steps. As the angle eases it bears to the right of a rocky rib on the crest and continues above terraces, weaving along near the crest to reach a rocky promontory, where the path ahead descends for a short distance. (You are now more or less directly above Font D'Aixa).</p>	<p>28min 1.1km</p>
<p>Continue descending very slightly across the saddle, then gradually rising up passing through a few terraces where the path becomes a little more defined (near here a path coming directly up from Font D'Aixa joins from the right, but is not obvious). As the slopes above steepen bear L. Ignore a vague path on the R with cairns, stay on the more obvious path (also with cairns), where the top of a ruin in the distance on the L comes into view. Continue as the path dips across a shallow barranco, then rises to reach and pass between the ruins.</p>	<p>50min 2km</p>
<p>Continue to the right along terraces, until a wide flat area is reached where there is a well, with a fence around it. This flat area is the 'Pla de L'Avenc'. Turn R and in about 10m reach the top of a very low bancal (terrace wall). Ahead on the L is an almond tree with a fence around it.</p>	<p>53min 2.2km</p>
<p>Turn L along the top of the low broken bancal to reach a breach in it. Ignore paths on the L and step down R then immediately turn L along a terrace beside the rubble bancal which retains it. As the terrace ends, on the left shrouded by shrubs and trees and easy to miss, or stumble into, is the Hoyo, a huge natural hole. Approach with great care to peer into it.</p>	<p>55min 2.3km</p>
<p>Option: With great care and a reasonable level of agility it can be descended, to marvel at the geology and the tenacity of the Moors, who constructed terraces within it!</p>	
<p>Once back on the surface, retrace your steps back to the almond tree with the fence around it. Pass it and turn L along terraces to pass above and to the R of a ruin and emerge onto a well defined path, turn R to a signpost for the PR-CV53.</p>	<p>57min 2.4km</p>
<p>Walk up the path for about 40m and well before reaching some trees, look for a very vague path on the L.</p> <p>Option: To visit the ruined two storey cave dwelling, turn L and follow the path for a few hundred metres as it curves around the slope gradually descending, until level with a band of cliffs. It then traverses to the caves. The lower cave has a ruined structure with a couple of support columns still standing. There is another cave directly above (accessible with care, by going up to the next tier well to the R) this has an enclosure wall around it. They look out over the steep terraces of Barranco de la Llorenca and demonstrate the harsh circumstances of those who tended these lofty places. Or are they remnants of the Civil war?</p> <p>Return via the same route to the main path and turn L uphill.</p>	<p>1hr 03min 2.8km</p>

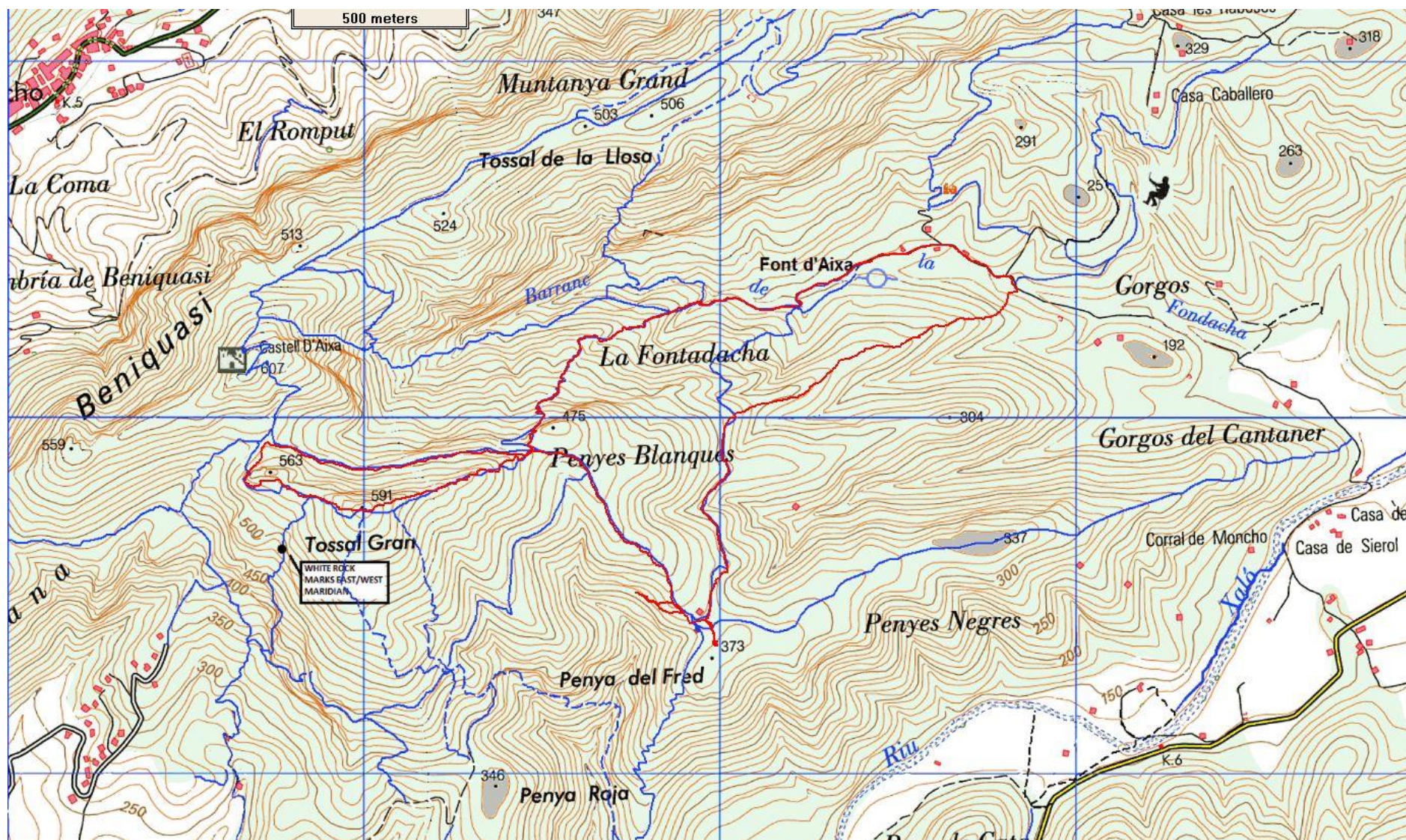
Remember that you use these walk guides at your own risk. Take precautions and if unsure – turn back!

COSTA BLANCA MOUNTAIN WALKERS - WALK DESCRIPTION

Follow this Y/W marked path up to the 'Coll del Trencall del Matxo' (467m. This is just below the subsidiary top of Penyes Blanques 475m on the R, which can be reached if desired in a few minutes). Above on the L is the summit dome of Tossal Gran but ignore unmarked paths leading up it, you will return to this col via those paths later!	1hr 23min 3.5km
From the 'Col del Trencall del Matxo' follow the (Y/W) marked path on the L, signed towards 'Xalo and Castells D'Aixa'. The path skirts the hillside passing as you go through zero degrees of the east/west Meridian, marked by a cairn a short distance before reaching the next col. Continue to the signpost on the col between Castell D'Aixa on the R and Tossal Gran on the L.	1hr 42min 4.3km
On the left are three vague paths, go straight ahead for about 10 metres and take the third one. Follow it as it climbs up around the righthand edge of the cliff on the rocky peak above. Immediately after passing around under the corner of the cliff, turn L onto an even more vague path, keeping close to the base of the cliff. Sometimes vegetation forces you to the R, here at one point near a large pine tree with a broken branch it is possible to look south down into a shallow barranco where on its left side a white painted boulder and a large paint blob on the cliff near it can be seen, these mark the East/West Meridian which passes between them. Keep working back left towards the cliff and bear R beneath it, as the cliff peters out reach a level area with a cairn, which also marks zero degrees of the west/east Meridian as you pass back through it.	1hr 50min 4.6km
Continue ahead across a shallow col and climb the slope towards the summit of Tossal Gran, there are multiple choices of vague paths, but don't drift too far to the right, keeping towards the ridge on the left may be best. Continue a little more steeply to arrive at the summit (591m).	1hr 59min 4.8km
From the summit turn east (towards Montgo) down the ridge. The path is not clearly defined, but the going is firmest on the L near the top of the cliffs, but be aware of the steep drop off to the L. Continue, weaving in and out of rock steps and vegetation to regain the 'Coll del Trencall del Matxo' visited earlier.	2hr 10min 5.4km
Turn L signed to 'Font D'Aixa' marked Y/W. Descend and in a short distance the path turns R. To pass through the cleft in the cliff ahead (The Squeeze) and emerge onto a path below, where there is another man made structure on the R. Continue, the path zig-zags as it descends to reach a 'T' junction, with signpost.	2hr 34min 6.3km
Turn R signed to 'Font D'Aixa' to return to the parking place at font.	2hr 42min 6.9km

Walk Recommendations or restrictions	
Hard Copy of map showing route attached:-	

Remember that you use these walk guides at your own risk. Take precautions and if unsure – turn back!



Remember that you use these walk guides at your own risk. Take precautions and if unsure – turn back!