

COSTA BLANCA MOUNTAIN WALKERS - WALK DESCRIPTION

Visit www.walksinspain.org for more walks descriptions in Spain

Walk description originally prepared by:-	Colin Read
Last Updated	17th May 2024
Title of Walk	Cavall Bernat via Creu del Cadenal (see also alternative options)
Location of Start (include name of nearest village/town at start of description)	Llauri. Carrer de Sant Vincent Martir, in Poble Nou beside a playground opposite walk information board.
Key Statistics for walk - Distance in km	10
Key Statistics for walk - Ascent in m	880
Key Statistics for walk - Walking time and total completion time including any stops	4hrs 6hrs
Key Statistics for walk - Grade (using CBMW system)	VS/C/Scr
Grid reference of start point (if known)	Lat: 39.13899, Long: -0.33178
Directions to Start	Leave AP 7 at junction 59 towards Favara. At roundabout turn R onto N332. In centre of Favara turn R onto CV-510. Go straight on to Llauri. At roundabout enter town, then turn L signed to Polideportivo, then 2nd right into C' De Sant Vincent Ferrer, turn 2nd left along C' Poble Nou. Follow it directly to Poble Nou. Park on roadside near playground with walk information board opposite.

Remember that you use these walk guides at your own risk. Take precautions and if unsure – turn back!

COSTA BLANCA MOUNTAIN WALKERS - WALK DESCRIPTION

Short walk description

Ascend through steep woodland and shrubbery to the open ridge at Pas de Sant Sofi . Scramble up to the Crue del Cardinal (optional). Regain the col and scramble up the imposing looking peak of Cavall Bernat on an improbable and complex route via a hidden cannal (gully). Descend by more straightforward paths. Steep and rough in places, but no real exposure. Wonderful views of mountains and the Valencian plains.

Options. the route can be followed to only include the Crue del Cardinal and then reversed, for which the scrambling is minimal. Reducing walking time to approx 3hrs 20min, distance to 7km, ascent to 600m and grade to MS/C/Scr. Alternatively, the visit to the cross can be missed out. Though savings are minimal.

Full Walk Description

Elapsed Walking Time/Distance so far

From the walk signboard walk up the road towards the quarry entrance gates to a junction with signpost. Turn L signed to Pedera and C. Cardenal PR-CV 334 . Follow a track into woodland and in a few metres at a fork, ignoring a small path on the R, bear R on the main stoney path uphill, to reach a junction with a path which joins from the left.

300m
5min

Turn R (Y/W) and continue passing a Forn D Calc. to reach a Y junction. Turn R uphill on a track, leaving the Y/W marked path and almost immediately turn L onto a path.

700m
14min

Follow the unmarked path as it curves L. Ignore paths going left down to old quarries. Keep up R below the crest of the main quarry, which is just out of sight on the right. Suddenly, you reach a view point on your right, beware of the vast drop into the impressive quarry below. Continue and at a Y junction keep R and continue around the quarry rim towards its apex to reach a signpost at a junction.

1.5km
28min

Turn R signed Senda Del Nino . The path joins a rough stoney track, still skirting up around the rim of the quarry. It then descends a little and soon, just before reaching a sharp righthand bend, there is a narrow (hidden) footpath going off left uphill (cairn).

2km
45min

Turn L and follow this path towards the distant cliffs ahead. It passes under a small cliff along the way. Eventually you reach a T junction with a cross path which has Y/W marks on it and a Y/W X at the top of your path (you will return here on the descent).

2.8km
1hr 05min

Turn L, the path traverses the hillside beneath the cliffs of Cavall Bernat. Ignore a path on the L at a sign post. Continue more steeply as the path rises up to reach the col of Pas de Sant Sofi, between Creu del Cardinal on the left and Cavall Bernat on the right.

3.33km
1hr 20min

Optional: From here you can miss out the visit to the Cross (but why would you want to?) by continuing to the R up Cavall Bernat from *.

Alternatively. Visit the cross and then reverse the outward route.

The gpx track includes the visit to the cross, as do the times and distances given here.

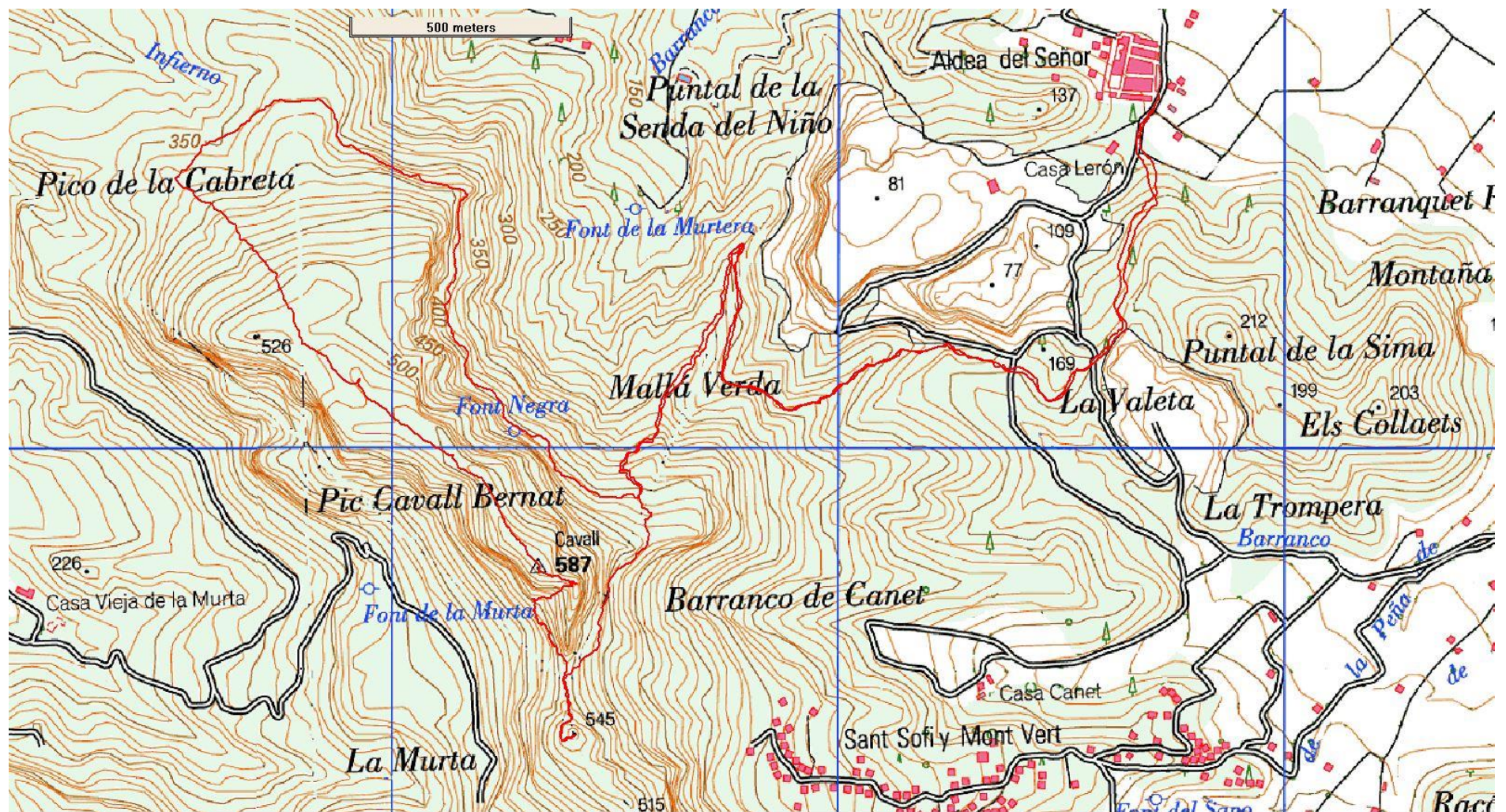
Remember that you use these walk guides at your own risk. Take precautions and if unsure – turn back!

COSTA BLANCA MOUNTAIN WALKERS - WALK DESCRIPTION

<p>Turn L along the ridge, passing another two junctions with posts. Continue over steps of rock. The path then curls around to the right of the cross, to where a path turns off L and goes steeply up over several scrambly rock steps to reach the cross (542m).</p> <p>Return to the col via the same route. Pass the marker posts to reach the third one, where you arrived at the col earlier.</p> <p>* Ahead the cliffs of Cavall Bernat appear imposing and the line of ascent improbable, but have faith! Go straight ahead (Y/W X) ignoring paths which descend to the left and right. Scramble up rock steps on the crest, until directly under the towering cliffs. Bear L and skirt beneath them on a path which gradually descends. There are a few awkward, sloping rock steps to descend, before reaching the foot of the previously unseen cannal (gully).</p> <p>Ascend the steep cannal. There is about 200 metres of scrambling, which is not difficult or exposed and leads to an airy col, between the huge pinnacle and the main summit, now just out of sight on the left.</p>	<p>3.5km 1hr 28min</p> <p>3.7km 1hrs 36min</p> <p>3.9km 1hrs 46min</p> <p>4.1km 1hrs 59min</p>
<p>Turn L and scramble directly up over a couple of rock steps to reach the summit (587m).</p> <p>Continue northwest along the ridge (Y/W). Eventually you begin to descend, ignore an unmarked path going back right and another heading off left towards a small top. Continue down (Y/W) towards a more level section to reach a junction at a post with (at the time of writing) no signs on it.</p> <p>Turn R (ENE 60 deg) towards the coast. The path dips then rises over a shoulder, curves right across hillside and down into and across a shallow barranco. It then rises over another shoulder, from where it descends. Ignore a vague path (cairn) descending steeply to the left and continue along the marked path (Y/W). Eventually, at a signpost, another path descends on the left. Ignore it and continue a few paces to yet another path on your left, marked with a Y/W cross. This is where you came up on your ascent.</p> <p>From here you reverse your outbound route. Go L steeply downhill to pass under the small cliff and eventually reach the broad rough track above the quarry.</p> <p>Turn R up along the track above the apex of the quarry. Just before the broken track turns left and goes steeply downhill, find a path which strikes off up R into the woodland and soon reaches a signpost.</p> <p>Keep L downhill on the path near the quarry rim. At a junction bear R downhill, (ignore a track on the left), to reach a junction with a path coming from the right. Go L (straight ahead). At a 'Y' junction keep L downhill, passing the 'Forn D'Calc. Eventually reach a junction (beside a tree with Y/W paint on it). Descend the stoney path on the L to reach a concrete track leading to the signpost near the quarry gates. Turn R onto the road to return to the parking place.</p>	<p>4.2km 2hrs 02min</p> <p>5.5km 2hrs.36min</p> <p>7.4km 3hrs 03min</p> <p>8.1km 3hrs 20min</p> <p>8.7km 3hrs 29min</p> <p>9.9km 3hrs 51min</p>
<p>Walk Recommendations or restrictions</p>	<p>The route over Cavall Bernat may be difficult to follow in cloudy conditions and treacherously slippery when wet. Not recommend with dogs.</p>

Remember that you use these walk guides at your own risk. Take precautions and if unsure – turn back!

Hard Copy of map showing route attached:-



Remember that you use these walk guides at your own risk. Take precautions and if unsure – turn back!