

COSTA BLANCA MOUNTAIN WALKERS - WALK DESCRIPTION

Visit www.walksinspain.org for more walks descriptions in Spain

Walk description originally prepared by:-	David and Vicki Francis	
Last Updated	9 th May 2024	
Title of Walk	Buddhist Colony circuit from Rincon de Pepe	
Location of Start (include name of nearest village/town at start of description)	La Nucia Restaurant Rincon de Pepe car park	
Key Statistics for walk - Distance in km	11.3	
Key Statistics for walk - Ascent in m	595	
Key Statistics for walk - Walking time and total completion time including any stops	4.5hr 5.5hr	
Key Statistics for walk - Grade (using CBMW system)	MS/B	
Grid reference of start point (if known)	Lat:- 38.653863, Long: -0.177548	
Directions to Start	From La Nucia drive along the new road CV70 towards Benimantell to the restaurant & bar of Rincon de Pepe on the RHS near Km 35 which is about 2 km past the house on the left with a big snail on the roof'. Park in the ample car park.	
Short walk description	An excellent circular walk, not too hard, or long or high, which encompasses views and aspects of both sides of the range. Passing through the narrow Paso Contador (much enlarged since the days when sheep could be counted singly as they passed). Spectacular views of the Sierras Bernia and Aixorta to the east and the Arc valley leading to Sella to the west.	
Full Walk Description	<div> <div>From Rincon de Pepe cross road and go up a short concrete road passing to the R of restaurant Ponderosa to a casa and pass close to its [N] side to find a path zig-zagging up to a green cylindrical water tank visible ahead.</div> <div>Turn L [S] along a surfaced road passing R of casa Cuarto Vientos and bearing R uphill at a forked junction ahead on a wide track Passing the return track on the LHS continue forward around the U-bend and proceed gently uphill on the wide track. Continue on this track (ignoring another track off L) to reach a casita with a steel garage door.</div> </div>	
	Elapsed Walking Time/Distance so far	<div>5mins 0.3km</div> <div>14mins 0.8km</div> <div>23mins 1.5km</div>

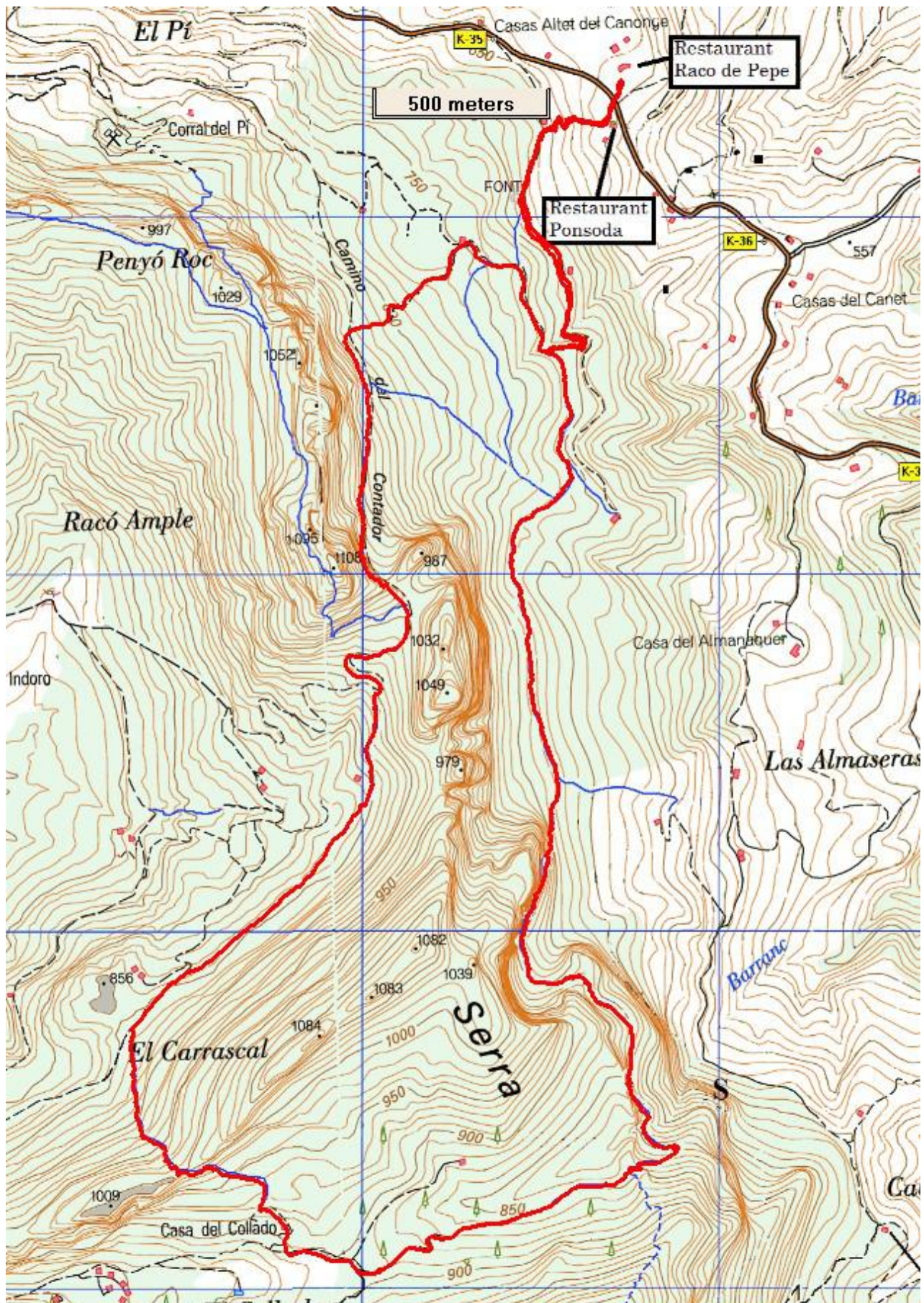
Remember that you use these walk guides at your own risk. Take precautions and if unsure – turn back!

COSTA BLANCA MOUNTAIN WALKERS - WALK DESCRIPTION

Just before casita finds track off L going up. Follow this track which after a while becomes a path and climbs steeply to meet a cross track [PRCV9].	41mins 2.0km
Turn L [S] up this main track to Paso de Comptador (elevation 972 mtrs).	61mins 2.8km
Then continue downward on this main track (with views into the Arc [Sella] valley) to just after the 2nd sharp bend finding on the LHS a fingerpost marking a downward path to the left.	1hr 13min, 3.3km
Follow this path downwards (passing a casita on your RHS) dropping to a wide path heading towards a casa with obvious solar panels on its RHS.	
This path meets a wider track (above the casa) [N].	
Turn L on this track on a steady incline and after 5 minutes find an obvious cairn (with red and blue markers) on LHS marking an upward narrow path.	1hr 41mins 4.7km
Zig-zag up this narrow, at times steep, path to the ridge of El Carrascal, marked by rudimentary cairns just before top, to enjoy superb views of Puig Campana, Sanxet and the buddhist colony down in the valley.	2hrs09min, 5.3km
Now head down over the ridge [S] into the valley (downward path to LHS of ascent track) on an initially steep rocky path (marked by cairns) but then more wooded gentle path easing R to pass by the front door of the largest stone casa of the colony (please respect privacy).	2hr 36min, 5.7km
Continue [E] along the track that runs past the front door, bearing R off the main path, and then L along a track, alongside the base of the Sanxet Ridge, passing a ruined casita on the LHS of the path after a few minutes. Continue along this flat path to the zig-zag downward path from the lip off Sanxet with forward views out to sea.	2hr 56min, 6.9km
The path now zig-zags down to the L passing below the 'Waterfall Cliff' after 12 minutes. Continue [N] on an obvious undulating path beneath the spectacular colourful cliffs of the 'Rooms of God' over the next 20 mins.	
Follow an obvious path (with descending black pipe) to eventually meet the wider track of the outward U-bend at the initial stages of the walk.	4hr 03min, 10.1km
Turn R [E] on this cross-track following the winding road back to the green water tank and retrace steps (under the tree) down to Rincon de Pepe.	4hr 25min 11.3km
<small>Spanish maps included within these descriptions are provided courtesy of the Spanish IGN and remain © Instituto Geográfico Nacional</small>	
Walk Recommendations or restrictions	None

Remember that you use these walk guides at your own risk. Take precautions and if unsure – turn back!

Route followed is outlined on Map



Remember that you use these walk guides at your own risk. Take precautions and if unsure – turn back!